

J Coach Windshield Water Leak

Description:

This procedure outlines the steps to check the engagement of the windshield and rework the front cap opening to prevent water intrusion.

Replace non-MCI supplied windshield, if present, with MCI windshield before starting this procedure.



Read this entire procedure before beginning work.

Use Safe Shop Practices At All Times.

To avoid personal injury:

- a. Proper Personal Protective Equipment (PPE) must be worn. Safety glasses and protective gloves are required for working with DEF Fluid.***
- b. Turn the main battery disconnect switch to the OFF position.***
- c. Ensure that both the front and the rear wheels are chocked.***
- d. Positioning the ENGINE RUN and ENGINE START switches on the engine compartment remote control box to the OFF position.***
- e. Allow enough time for components to cool down prior to working in the engine compartment.***

1.0 Special Tools:

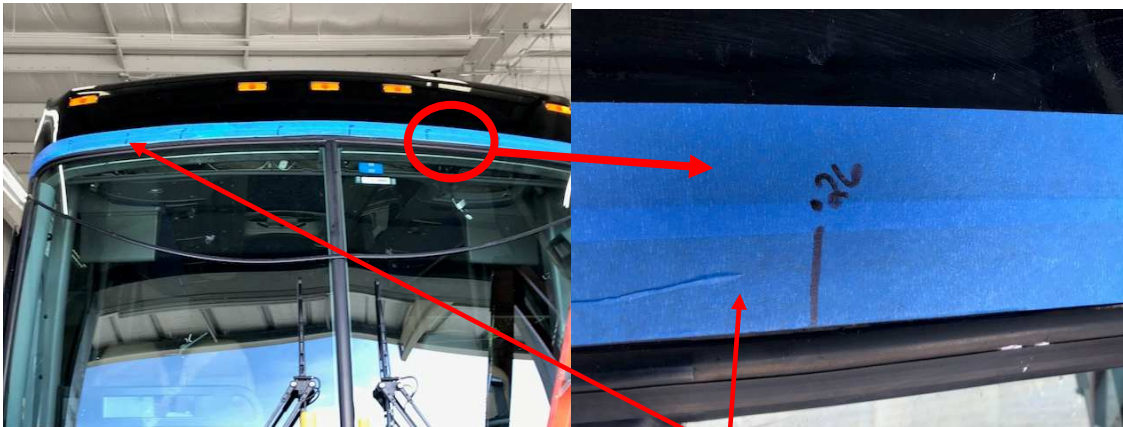
- Fencing tool
- 6-inch steel ruler



Fencing Tool P-101

2.0 Fence Engagement Inspection:

Place tape along the edge of the windshield fencing on the front cap.



Tape placed at the edge of the fencing

Remove the lacing from the top of the windshield fencing.



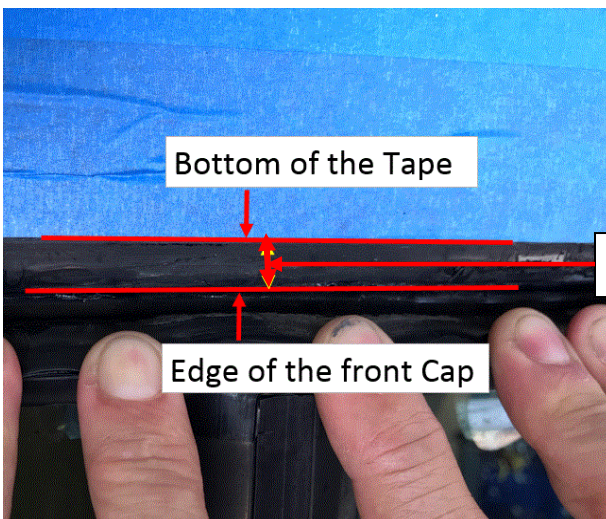
The lacing removed from the top section of windshield

Insert the fencing tool between the fencing and front cap to release the fencing from the cap.



Fencing tool

Use ruler to measure the engagement of the fencing to the front cap. Measure from the bottom of the tape to the edge of the front cap. Measure the engagement at the corners and for every 6 inches in between along the top section of the fence.



Bottom of the Tape

The engagement measurement area

Edge of the front Cap

Procedure 03-264

The fencing engagement should be greater than 0.25 inches on the ruler.

- If the engagement is greater than 0.25 inches proceed to Section 3.0
- If the engagement is less than 0.25 inches proceed to Section 4.0

3.0 Sealing Windshield Fencing

3.1 Material Requirement:

Service Kit **T03-3012** contains the following parts:

ITEM	PART NO.	QTY	U/M	DESCRIPTION
1	T03-3011	1	EA	Adhesive-Urethane, 3M 08609
2	23-02-0122	1	EA	Primer-activator Teroson PU 8519p

3.2 Applying sealant to the windshield:

Use fencing tool to remove old sealant between the front cap and the windshield fencing. Clean area with isopropyl alcohol to remove all debris and sealant.



Removing sealant and dirt from area between fencing and front cap across front windshield.

Apply primer 23-02-0122 between the fencing and the front cap and allow 5 minutes flash off time.



Apply primer between fencing and front cap.

Procedure 03-264

Apply adhesive T03-3011 between the fencing and the front cap. Apply enough to fill the gap and allow the excess adhesive to run out on the tape.



Apply adhesive between fencing and front cap.

Reinstall the lacing.



Lacing installed in fencing

Let the adhesive dry for 20 minutes and clean up the excess that was left over. Remove the tape. This procedure is complete

Procedure complete

4.0 Mocking Up Windshields

4.1 Material requirements:

Service Kit **T03-3008** contains the following parts:

ITEM	PART NO.	QTY	U/M	DESCRIPTION
1	T03-3002	3	EA	Fiberglass Strip
2	T03-3003	3	EA	Stainless Steel Strip
3	T03-3004	2	EA	Gasket- Driverside 12-inch piece
4	T03-3005	2	EA	Gasket- Curbside 8-inch piece
5	T03-3006	4	EA	Gasket- Bottom 10-inch piece
6	T03-3007	2	EA	Gasket- Middle 10-inch piece
7	23-02-0127	1	EA	Epoxy-Pliogrip Plastic Repair-3 with tips
8	T03-3011	1	EA	Adhesive-Urethane, 3M 08609
9	23-02-0122	1	EA	Primer-activator Teroson PU 8519p

Additionally, use front windshield gasket 03-27-2045 as required.

4.2 Removing the fence:

Remove windshield wipers and lacing from the fence.

Remove trim pieces on the inside of the coach above driver seat and stairwell set aside and save for later



Remove both pieces
inside coach

Remove windshield water hose.

Spray lubrication between fencing and glass and from inside of the coach start pushing out the roadside windshield glass. Start at the top right side and go down. After that, push the top portion of the window out and then left side of the window. Once half the glass is out slide window out of the bottom groove of the fence and set aside for later use. This step requires another person on the outside of the coach to hold the windshield.



Repeat the process for the curbside windshield.



Remove fencing from the front cap and set aside for later use.

Cover the dash from inside of the coach with a cloth to avoid dust from entering the coach.

Place two roadside gaskets, T03-3004, on the roadside post and two curbside gaskets, T03-3005, on the curbside post evenly spaced from top to bottom on outside posts. Place the two middle gaskets, T03-3007, at the top and center of the middle post. Place two bottom gaskets, T03-3006, on the roadside bottom track of the windshield and two bottom gaskets, T03-3006, on the curbside bottom track of the windshield in an evenly spaced manner.



T03-3005 to be placed on the curbside

T03-3007 placed on the middle post

T03-3004 placed on the driver's side post

Place the roadside windshield in the T03-3006 sections on bottom track and install the windshield into T03-3004 sections on the outside post and then into T03-3007 sections on the middle post. Repeat the process for the curbside windshield



Install windshield

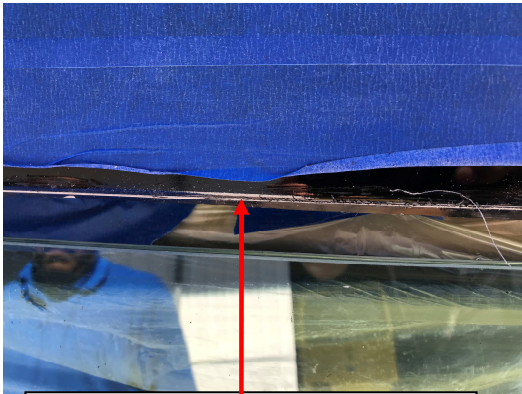
4.3 Scribing Line:

With the calipers locked at 0.9" rest one pointer of the caliper on top of the windshield and scribe a line on the front cap using the other pointer by running the calipers along the top of the windshield

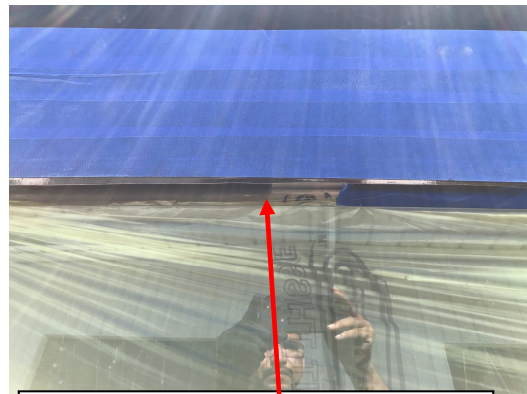


Scribe a line across the front cap with calipers

Adjust the bottom edge of the tape to line up with the scribed line



Line scribed with calipers across front cap



Tape lined up with scribed line to mark how much material will be

Remove both windshields in preparation to trim front cap.

4.4 Trimming Front Cap:

Place an 80 grit D/A sanding pad on the sander and trim the front cap at the bottom of the tape. Care should be taken not to trim at the corners



Remove material to the bottom of the tape marking the scribed line



Leave this material on the cap. Do not remove material from the either corner

4.5 Installing the Cap Extension:

Scuff both sides of T03-3003 Stainless steel Strip using 80 grit sandpaper and then clean with isopropyl alcohol. Clean the fiberglass strip and front cap from inside of the coach with isopropyl alcohol.



Scuff both sides of the stainless strip

Apply adhesive 23-02-0127 to the stainless-steel strip, T03-3003, and attach it to the fiberglass strip, T03-3002. Use clamps to hold it in place. Allow 20 minutes flash off time



Attach the fiberglass and stainless-steel strips



Clamp after bonding T03-3002, T03-3003 together

Procedure 03-264

Apply adhesive 23-02-0127 to the stainless-steel strip, T03-3003, and attach it to the front cap from inside the coach at center in such a way that the stainless-steel strip surface with holes is in contact with the front cap and the fiberglass side of the strip is pointed outwards. Use the clamps to hold it in place.



Extension is centered in middle of cap

On the curbside, measure the length of the front cap between the edge of curbside windshield opening and left edge of the installed stainless-steel strip. Cut a piece of stainless-steel strip, T03-3003, to the measured length and shape it to fit the contour of the front cap. Cut a piece of fiberglass strip, T03-3002, to the just cut stainless steel strip length and shape it to match the contour of the stainless-steel strip. Score slots on the back side of fiberglass strip, T03-3002, to match the shape of stainless steel strip.



Shaping Stainless Strip to fit contour to windshield opening



Scoring Fiberglass Strip to fit contour of the windshield opening

Use adhesive 23-02-0127 on the just shaped stainless-steel strip and attach it to the fiberglass strip. Use clamps to hold them in place. Allow 20 minutes flash off time for the adhesive.



Attaching the fiberglass strip to the stainless-steel strip

Procedure 03-264

Apply adhesive 23-02-0127 to the stainless-steel strips, T03-3003, and attach it to the bottom of the front cap. Use clamps to hold it in place.



Use clamps to hold extension in place on the corners till adhesive dries

Repeat the process for the roadside windshield and remove all clamps after 20 minutes from the application of adhesive.

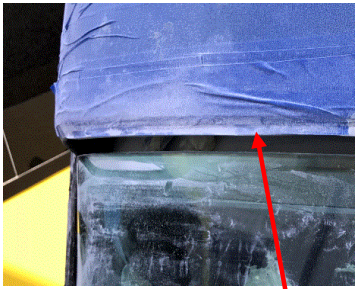
4.6 Trimming Cap Extension:

Reinstall both windshields (See page 9 for full instructions). Lock calipers to 0.9. Use the top of the windshields as you guide. Put one pointer on the top of the windshields and let the other scribe a line on the front cap. Do this all the way across the front cap. Apply the lower edge of the masking tape along scribed line. This will give a good guide for how much material needs to be removed.



Calipers locked at 0.9

Remove the windshields from the installed fencing and mark the scribed line with tape. Using D/A sander remove the material up to the line scribed by the calipers.



Tape used to mark line where material is removed



Using a DA sander to remove material to tape line material

0.337-inch gap



Measure the gap between the top of the windshield and the bottom of the cap to ensure there is a 0.337-inch gap all the way across. If needed remove the windshield and trim until desired clearance of 0.337-inch is reached. Once gap is reached remove both windshields and removed gasket parts that were installed.

4.7 Install Fencing and Windshield

Apply 23-02-0122 primer along the outside groove of the fencing and allow 5 minutes flash off time. Apply T03-3011 adhesive along the outside groove and install the fencing. Allow 20 minutes for the adhesive to dry. Apply a lubricant, similar to MCI P/N: 21-7112-15, along the inside surface of the fencing. Place the curbside windshield in the bottom groove of the fence and work evenly up the right edge. After placing the right edge in the fence, put the top edge and then left edge in the fence. Use fencing tool to help slide window into the fencing groove.

Repeat the process for the street side windshield.

Once windshield is installed install lacing in the fencing.

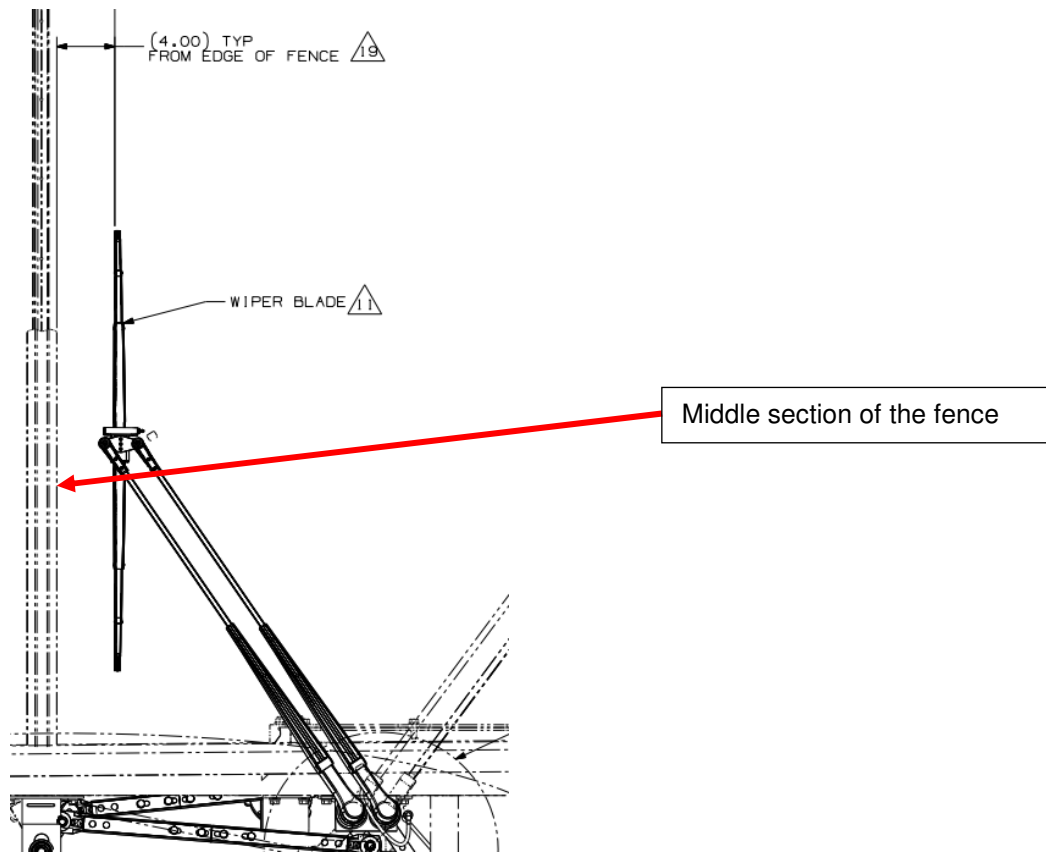
4.8 Testing and Validation

Start spraying water for 15-20 minutes on the windshield and look for any water leak inside the coach. Look on the inside of the front cap at the marker lights and the 360 Camera if one is installed.

Reinstall the opened trim pieces in the coach.

Procedure 03-264

Install the wipers in such a way that the wiper blades are parallel to the middle section of the fence and are 4 inches away from the edge. Tighten the nuts to 26-33 LB-FT.



Install the washer hose

Clean the coach.

This procedure is now complete

End of Procedure