

Technical BULLETIN

© 2019 YAMAHA MOTOR CORPORATION, U.S.A.

CERTAIN 2006 ~ 2019 FJR13AC/AEC/ASC/PC (CALIFORNIA MODELS) Canister Replacement/ Air Vent Hose Relocation Due to Water Intrusion

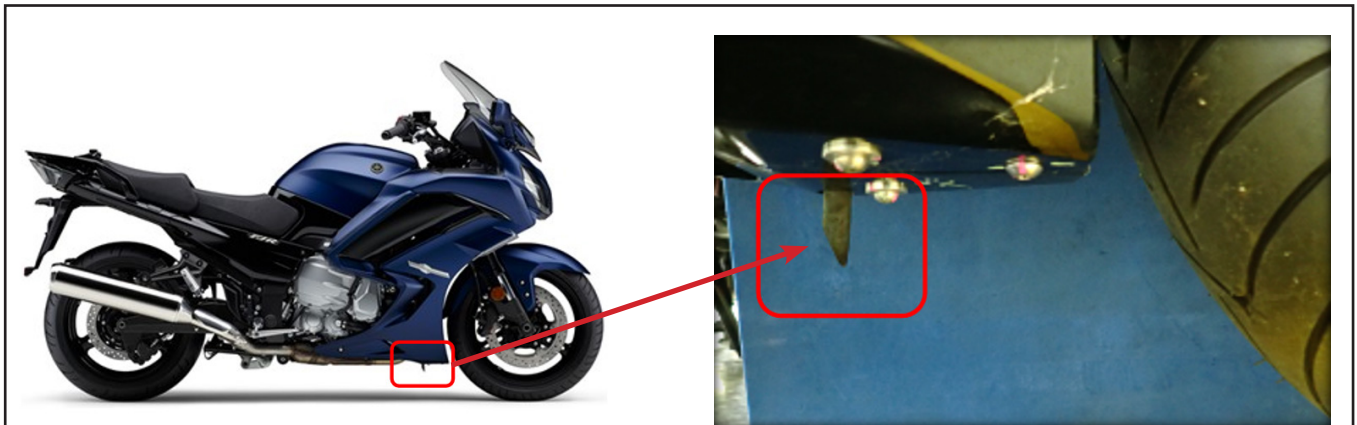


INTRODUCTION

When the motorcycle is ridden in rainy or wet road conditions, the front tire can spray water directly at the exposed open end of the canister's air vent hose. It is possible for negative pressure in the fuel tank breather hose system to draw water into the canister through the air vent hose. To eliminate this possibility, affected units should have the canister replaced and the hose routing modified as described in this bulletin.

In addition, on 2016 ~ 2019 models, it is possible for the negative pressure in the system to let any water collected in the canister migrate up to the fuel tank because the one-way valve was eliminated. If this happens, the motorcycle could experience poor acceleration and/or corrosion of the fuel pump's sending unit could result in inaccurate fuel level indication on the meter. Therefore, in addition to the canister replacement and revised hose routing, these units should have the fuel tank and fuel pump inspected for rust/corrosion and, if necessary, replaced.

NOTE: Canister function is not affected even if water enters the canister.



DEALER ACTION SUMMARY

Unsold &

Sold Units: Modify only if the motorcycle shows a "Not Completed" status for 90ZP in Unit Status on YDS.

Parts: Yes. See the *Parts Information* section of this bulletin for information.

Warranty: Submit a Service-per-Bulletin (90 Code) Warranty Request for reimbursement (refer to the *Warranty Information* section).



AFFECTED RANGE

CHECK UNIT STATUS ON YDS FIRST TO BE SURE UNIT IS AFFECTED AND UNMODIFIED.

CANISTER REPLACEMENT/HOSE REROUTING ONLY

2006 ~ 2009 FJR1300ASC RP16Y-0000005 ~ 0000306
2006 ~ 2012 FJR1300AC RP15Y-0000001 ~ 0001455
2013 ~ 2015 FJR1300AC RP24Y-0000006 ~ 0000454
2014 ~ 2015 FJR1300AEC RP26Y-0000002 ~ 0000213

IMPORTANT:

Only the 2016 ~ 2019 models require the fuel tank and fuel pump inspection. Pay close attention to the service procedures in this bulletin to ensure you are not performing unnecessary work.

CANISTER REPLACEMENT/HOSE REROUTING PLUS

FUEL PUMP/ FUEL TANK INSPECTION (REPLACEMENT IF NECESSARY)

2016 ~ 2019 FJR1300AC RP29Y-0000002 ~ 0000151
2016 ~ 2019 FJR1300AEC RP30Y-0000006 ~ 0000177
2018 FJR1300PC RP31Y-0000003 ~ 0000052

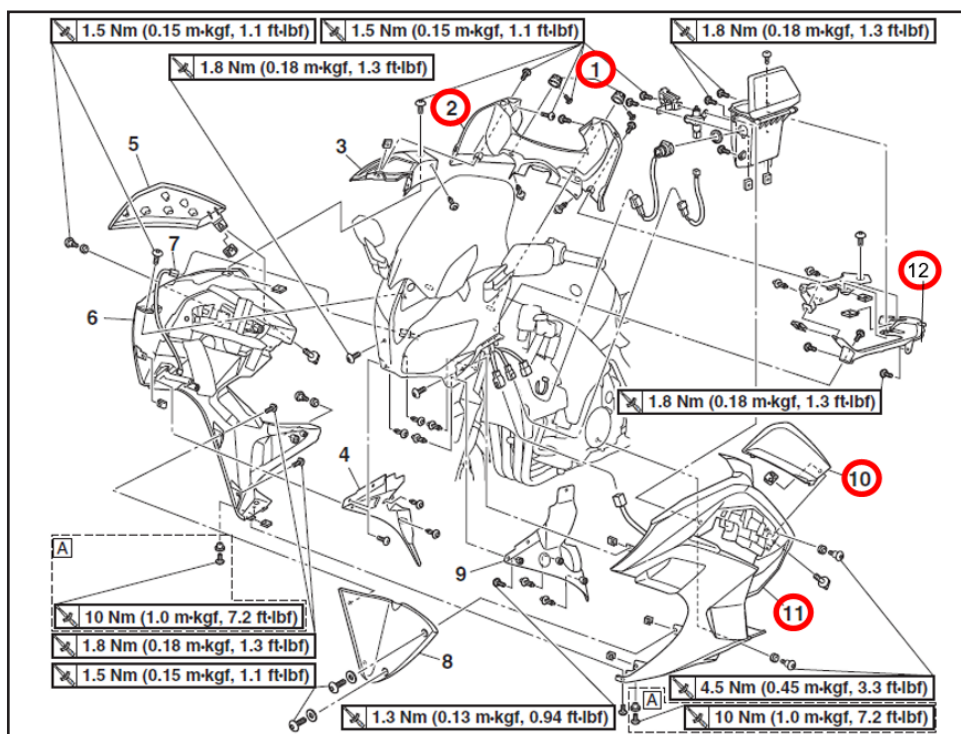


SERVICE PROCEDURES

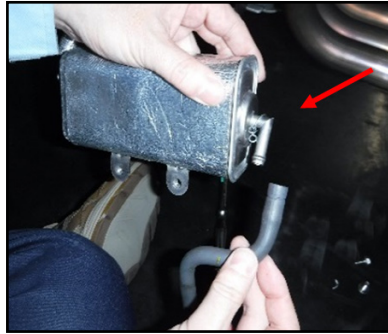
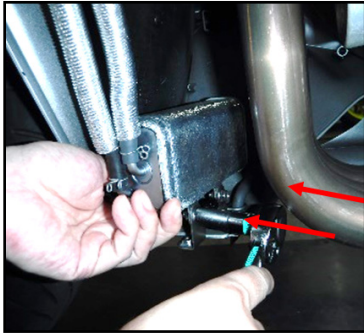
Canister Replacement and Hose Rerouting for all Affected Units

1. Remove the following components:

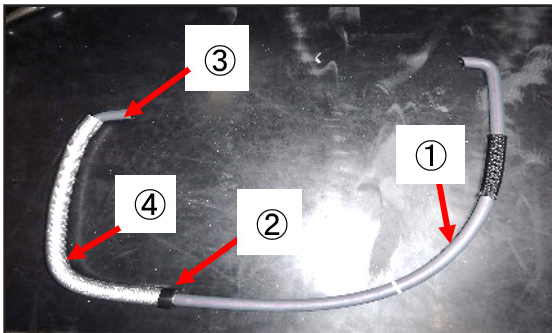
- Left and right side headlight level adjustment knobs (1)
- Front cowling inner panel (2)
- Left side upper inner panel (12)
- Left side panel (10)
- Left side cowling (11)



1. Remove the canister by loosening the bolts while supporting the canister with your hand to prevent bending or damaging the mounting bracket.
2. Disconnect the hoses from the canister. Discard the old canister and air vent hose.

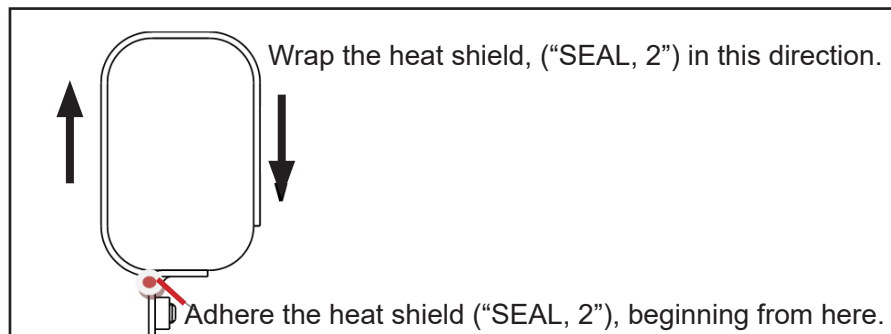


3. Assemble the parts from the kit as shown below by sliding the "PROTECTOR, PIPE" over "PIPE, 4" and connecting "PIPE, 5" using the "JOINT."

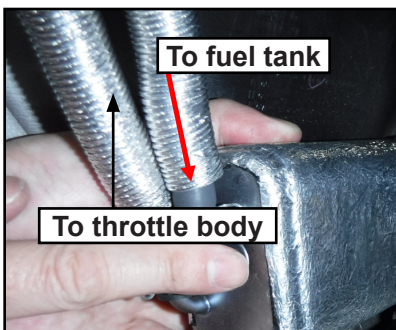


- | | |
|----|-----------------------------------|
| 1. | PIPE, 5 (B88-24315-00-00) |
| 2. | JOINT (4JP-21753-00-00) |
| 3. | PIPE, 4 (B88-24314-00-00) |
| 4. | PROTECTOR, PIPE (B88-24327-00-00) |

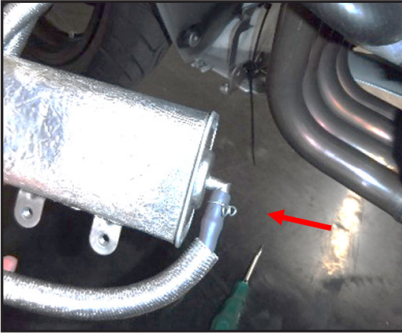
4. Adhere "SEAL2" (heat shield) to the new "CANISTER" as shown below.



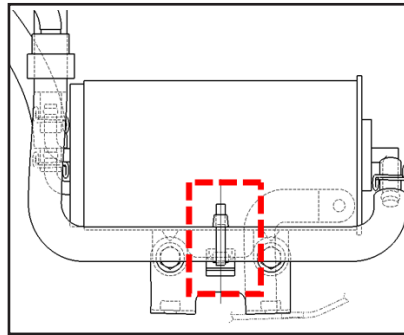
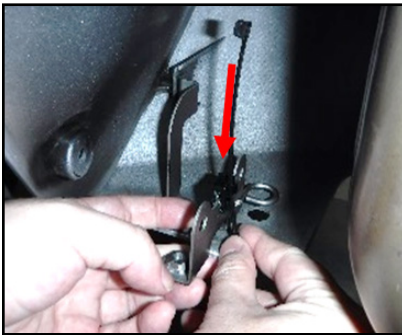
5. Connect the existing hose leading to the fuel tank to the canister as shown using new clips supplied from the kit.



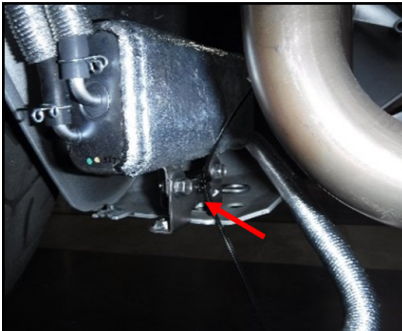
6. Attach the newly assembled "PIPE, 4" from step 3 to the opposite side of the canister as shown.



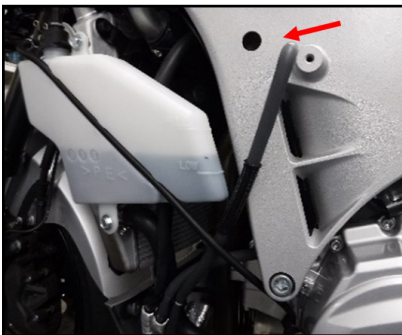
7. Put the "CLAMP" (zip tie) through the "BRACKET, CANISTER" as shown.



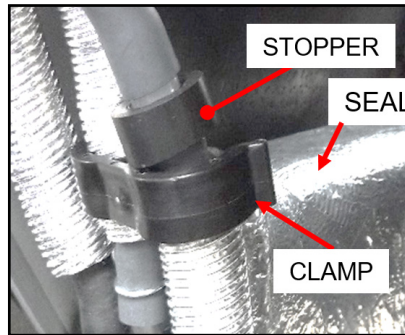
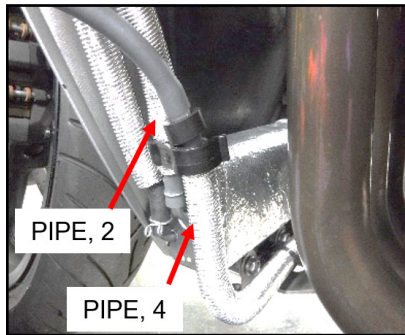
8. Install the "CANISTER" on the "BRACKET, CANISTER."



9. Insert the "GROMMET" into the existing hole of the frame as shown.



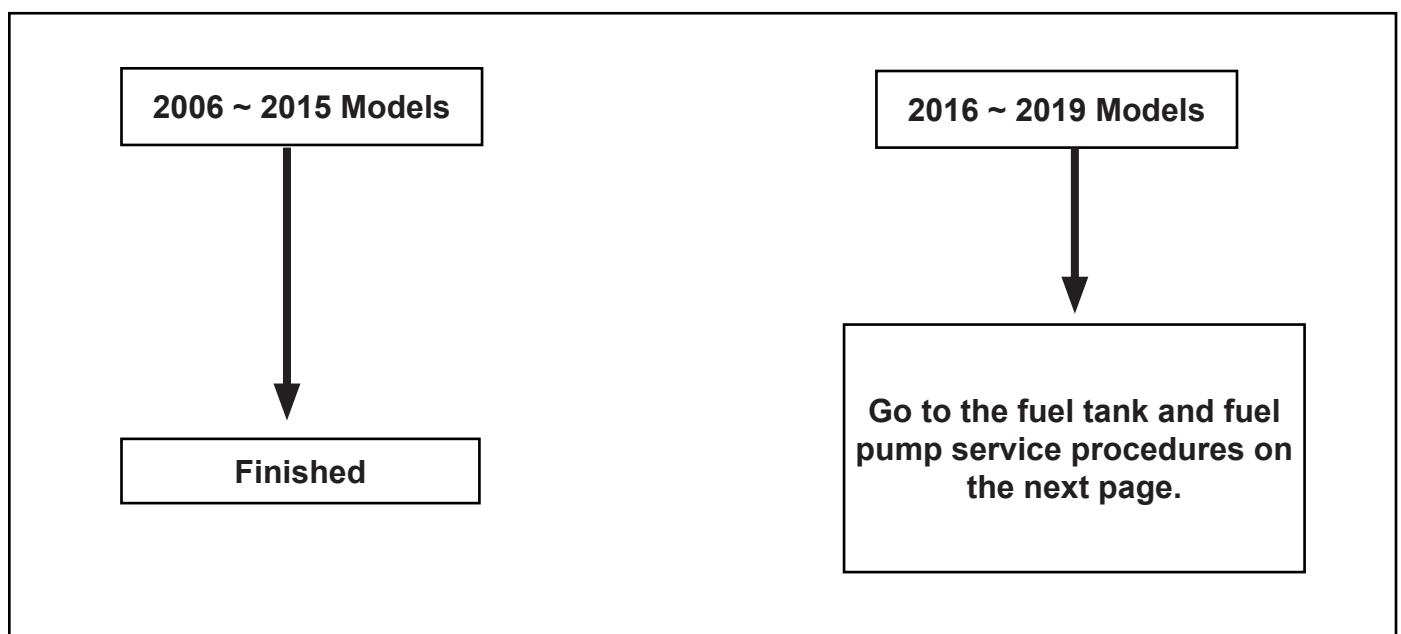
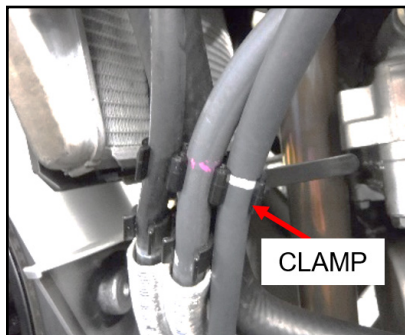
10. Install the clamp to secure "PIPE, 2" and "PIPE, 4" as shown.



11. Clamp "PIPE, 2" and "PIPE, 5" together as shown.

12. For 2006 ~ 2015 models proceed to reassemble the motorcycle.

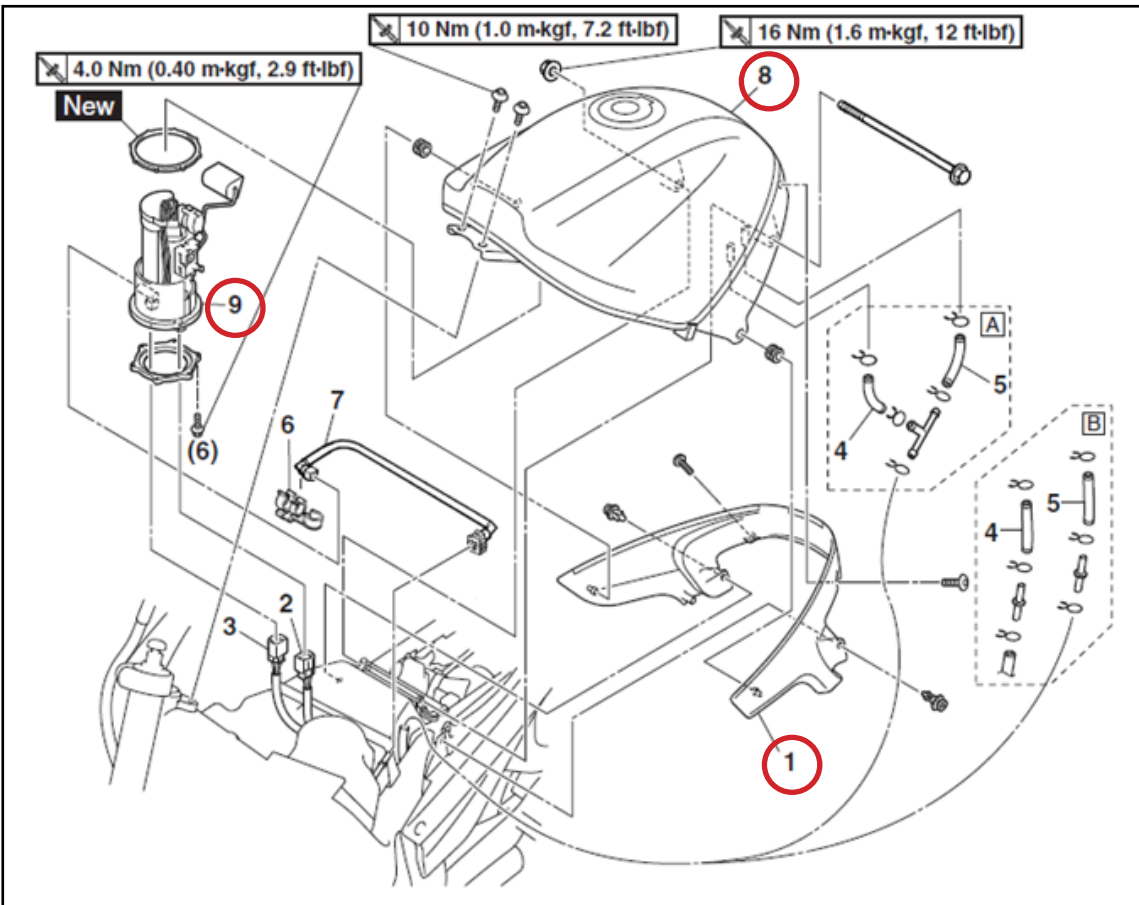
For 2016 ~ 2019 models, proceed to the fuel tank and fuel pump inspection service procedures section.



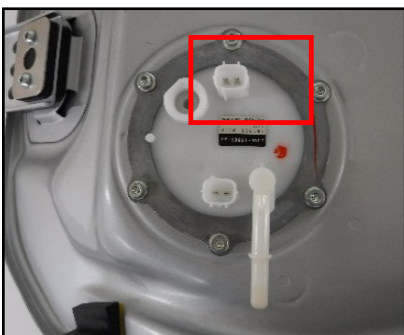
Fuel Tank and Fuel Pump Inspection for Affected 2016 ~ 2019 Units Only

NOTE: 2006 ~ 2015 models are equipped with a one-way valve in the fuel tank vent hose to the canister, which would prevent water from migrating to the fuel tank. Therefore, these earlier models do not require the following inspection procedure.

1. Remove the fuel tank following the procedures from the service manual LIT-11616-29-61.
 - Fuel tank panel (1)
 - Fuel tank (8)
 - Fuel pump (9)



2. Drain the fuel from the tank into an appropriate clean container for re-use and remove the fuel pump from the fuel tank.
3. Test the resistance of the fuel pump's sending unit from the terminals shown below for steps 4 and 5.



4. Measure the resistance of the sending unit's with the float in the low position.



Reference value: $140 \pm 1 \Omega$

If out of reference value, replace the fuel pump with a new one.

5. Measure the sending unit's resistance with the float in the upper position.



Reference value: $20 \pm 1 \Omega$

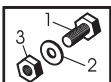
If out of reference value, replace the fuel pump with a new one.

6. Check the inside of the fuel tank for rust using a flashlight.



If there is rust in the fuel tank, replace it with a new one. Be sure to install new graphics, warning label, and dampers.

7. If the fuel pump or fuel tank do not pass the inspection, replace the parts following the procedures from the service manual LIT-11616-29-61. If both the fuel pump and fuel tank pass the inspection, proceed to step 8.
8. Reassemble the fuel tank and reinstall it on the motorcycle.



PARTS INFORMATION

2006 ~ 2015 FJR13 Models

| Part Number | Description | Qty | Application | Dealer Cost |
|-----------------|---------------------------------------|-----|-----------------|-------------|
| 90891-20334-00* | Canister Kit, FJR1300 CAL Contains: | 1 | 2006~2015 FJR13 | \$56.28 |
| | (1) Pipe, 4 (B88-24314-00-00) | 1 | | |
| | (2) Protector, Pipe (B88-24327-00-00) | 1 | | |
| | (3) Joint (4JP-21753-00-00) | 1 | | |
| | (4) Clamp (90464-10011-00) | 1 | | |
| | (5) Clamp (90464-16002-00) | 1 | | |
| | (6) Canister (3P6-24170-00-00) | 1 | | |
| | (7) Seal, 2 (3P6-2414E-00-00) | 1 | | |
| | (8) Clamp (90464-45005-00) | 1 | | |
| | (9) Pipe, 5 (B88-24315-00-00) | 1 | | |
| | (10) Grommet (90480-150160-00) | 1 | | |

2016 ~ 2019 FJR13 Models

| Part Number | Description | Qty | Application | Dealer Cost |
|-----------------|---------------------------------------|-----|-----------------|-------------|
| 90891-20327-00* | Canister Kit, FJR1300 Contains: | 1 | 2016~2019 FJR13 | \$56.28 |
| | (1) Pipe, 4 (B88-24314-00-00) | 1 | | |
| | (2) Protector, Pipe (B88-24327-00-00) | 1 | | |
| | (3) Joint (4JP-21753-00-00) | 1 | | |
| | (4) Clamp (90464-10011-00) | 1 | | |
| | (5) Clamp (90464-16002-00) | 1 | | |
| | (6) Canister (3P6-24170-00-00) | 1 | | |
| | (7) Seal, 2 (3P6-2414E-00-00) | 1 | | |
| | (8) Clamp (90464-45005-00) | 1 | | |
| | (9) Pipe, 5 (B88-24315-00-00) | 1 | | |
| | (10) Grommet (90480-150160-00) | 1 | | |
| | (11) O-Ring (19B-24486-01-00) | 1 | | |

* Order this kit per the campaign-parts process provided in Technical Bulletin MSA2017-001A.
Place any parts needed for fuel pump or fuel tank replacement on a standard parts order.

Quick reference chart for related parts based on the result from the fuel tank inspection.

| Year | True Model | Fuel Tank | Emblem (Qty 2) | Label, Caution | Damper (Qty 2) | Fuel Pump |
|------|------------|-----------------|-----------------|-----------------|-----------------|-----------------|
| 2016 | FJR13AGC | 3P6-YK241-00-P2 | 1RC-2413B-01-00 | 1TP-2118K-A1-00 | 3P6-24184-00-00 | 5JW-13907-22-00 |
| 2016 | FJR13ESGC | 3P6-YK241-00-P2 | | | | |
| 2017 | FJR13ESHC | 3P6-YK241-00-P6 | | | | |
| 2018 | FJR13AJCL | 3P6-24110-00-PF | | | | |
| 2018 | FJR13ESJCL | 3P6-24110-00-PF | | | | |
| 2018 | FJR13PJW | 3P6-YK241-00-UJ | | | | |
| 2019 | FJR13AKCGY | 3P6-YK241-00-PD | | | | |
| 2019 | FJR13ESKCL | 3P6-24110-00-PF | | | | |



WARRANTY INFORMATION

YDS:

After completion, select Campaign Number **090ZP** from the Campaign Number pull-down menu in the Yamaha Dealer System (YDS) when entering your claim and choose the appropriate option.

| Canister Replacement/ Hose Relocation | Fuel Pump/ Fuel Tank Inspection | Replaced Fuel Pump | Replaced Fuel Tank | Labor Allowance | Warranty Pull-Down Choice |
|---------------------------------------|---------------------------------|--------------------|--------------------|-----------------|---------------------------|
| ✓ | | | | 0.8 hr | 2006~2015 All |
| ✓ | ✓ | | | 1.6 hrs | 2016~2019 Option 1 |
| ✓ | ✓ | ✓ | | 1.6 hrs | 2016~2019 Option 2 |
| ✓ | ✓ | | ✓ | 1.6 hrs | 2016~2019 Option 3 |
| ✓ | ✓ | ✓ | ✓ | 1.6 hrs | 2016~2019 Option 4 |

This Service-per-Bulletin 90 Code (**090ZP**) will only be valid for 5 years from date of issue of this Technical Bulletin and will expire 8/28/2024

The screenshot displays two side-by-side windows from the Yamaha Dealer System (YDS). The left window, titled 'Warranty Claim', shows a list of claim types with 'Recall / Service per Bulletin Claim (90 Codes)' selected and highlighted by a red box. The right window, titled 'Unit Recall/Service Campaign', contains a form for entering recall information. A red arrow points to the 'Campaign Nbr:' field, with the text 'ENTER CAMPAIGN CODE (090ZP) HERE' next to it. The form also includes fields for 'Primary ID', 'Finish Date', and 'Miles or Hours', along with a 'Please Select Repair Option' dropdown and a 'STEP 1: Get Repair Options >>' button. A table at the bottom of the right window has columns for 'Primary ID', 'Finish Date', 'Miles Or Hrs', 'UOM', 'Repair Option', and 'Remove'.

If you have any questions about proper procedures for Factory Modification Campaigns, see Chapter 7 in your Warranty and Y.E.S. Handbook (LIT-11760-00-16).