



Service Bulletin


Bulletin No.: 19-NA-167

Date: August, 2019

TECHNICAL

Subject: Water Leak into Interior, and/or Various Electrical Concerns, Liftgate Actuator Noisy or Inoperative

Brand:	Model:	Model Year:		Date Breakpoint:		Engine:	Transmission:
		from	to	from	to		
Cadillac	XT5	2017	2019	SOP	Prior to June 6, 2019	All	All
Cadillac	XT6	2020	2020				
GMC	Acadia VIN N	2017	2017				
	Acadia	2018	2019				
Holden	Acadia	2019	2019				

Involved Region or Country	North America, Russia, Israel, Palestine, Japan, South Korea, Europe, Middle East, Australia and New Zealand.
Additional Options (RPOs)	
Condition	Some customers may comment on seeing water leak into the interior, or wet carpet. This condition could occur at either the front and/or rear, and on the right and/or left side. Some electrical concerns or issues may occur, such as power locks cycle or are inoperative after a car wash or rain in the XT5 and Acadia, or the liftgate actuator may be noisy or inoperative in an XT6.
Cause	<p>The cause of the condition may be possible "pin hole" voids in the roof panel to outer ring laser braze and seam sealer. The pin holes are most commonly found near the top of the windshield at the A - pillars, or the top of liftgate near the D - pillars. Examples of the leak areas are shown below.</p> <p>Possible Front Laser Braze Water Leak Areas (1)</p> 

5379776

Possible Rear Laser Braze Water Leak Areas (2)

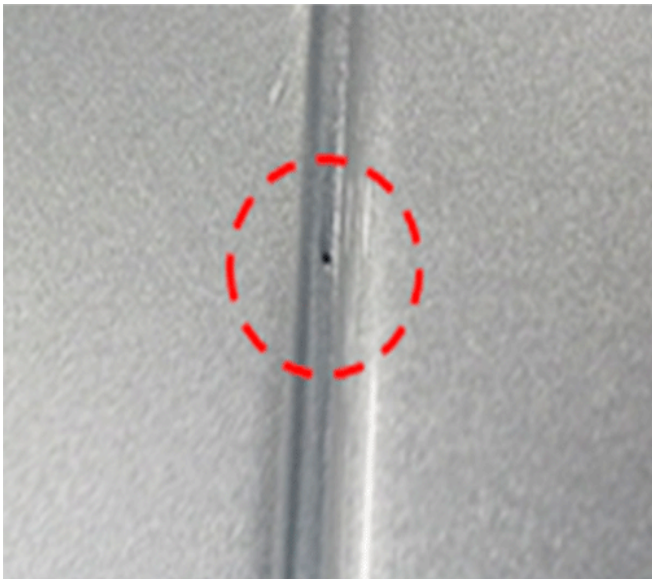


5379781

Correction

Following the Service Procedure below, inspect the forward and rear laser braze corners of the roof ditch, at the upper windshield and rear liftgate areas.

Service Procedure



4233899



5379785

Note: The pin holes/cracks may be more difficult to see on darker color finishes. A front and rear example of a visible pin hole are shown in the graphics above.



5380244

1. Visually inspect the front right and left roof laser braze, then the rear right and left roof laser braze, for pin holes or a crack.
2. Seal the holes/crack in any laser braze area following the steps below:
 - 2.1. Mix a small amount of *Kent Automotive High-Tech Clear Seam Sealer, P/N 10200 (5 oz tube), or equivalent, WITH the proper touch up paint color.
 - 2.2. Avoiding excess sealer build up within the ditch, work a small amount of the sealer into the hole with a gloved finger.
 - 2.3. Wipe away any excess sealer with a light amount of solvent on a rag or paper towel. The solvent will help the sealer flow into the hole/crack.
3. Clean and dry any wet trim. Refer to Floor Carpet Drying in SI.
4. Address and repair any electrical concerns as necessary.

Parts Information

* We believe this source and their products to be reliable. There may be additional manufacturers of such products/materials. General Motors does not endorse, indicate any preference for, or assume any responsibility for the products or material from this firm or for any such items that may be available from other sources.

Causal Part	Description	Part Number	Material Allowance
N/A	Kent Automotive High-Tech™ Clear Seam Sealer	P10200	\$2.30 US / \$3.45 Canada
	PAINT, TOUCH-UP TUBE	See EPC	N/A

Warranty Information

For vehicles repaired under the Bumper-to-Bumper coverage (Canada Base Warranty coverage), use the following labor operation. Reference the Applicable Warranties section of Investigate Vehicle History (IVH) for coverage information.

Labor Operation	Description	Labor Time
0580448*	Apply Sealer at Laser Braze - One Location	0.3 hr
Add	Apply Sealer at Laser Braze - Each Additional Location (Maximum of 3)	0.2 hr

*This is a unique Labor Operation for Bulletin use only.

Version	1
Modified	Released July 29, 2019

GM bulletins are intended for use by professional technicians, NOT a "do-it-yourselfer". They are written to inform these technicians of conditions that may occur on some vehicles, or to provide information that could assist in the proper service of a vehicle. Properly trained technicians have the equipment, tools, safety instructions, and know-how to do a job properly and safely. If a condition is described, DO NOT assume that the bulletin applies to your vehicle, or that your vehicle will have that condition. See your GM dealer for information on whether your vehicle may benefit from the information.



WE SUPPORT VOLUNTARY
TECHNICIAN
CERTIFICATION