



GROUP	NUMBER
Body Exterior	19-BD-002HG
DATE	MODEL(S)
July 2019	G80 (DH)

Technical Service Bulletin


SUBJECT: EXTERIOR CHROME SURFACE CLEANING

Description: This procedure describes how to clean chrome surfaces when stains are present. Some stains may occur from hard water used during car wash. Moldings should not be replaced if stains are present. Follow the procedures below to remove stains from chrome moldings.



Applicable Vehicles: 2018MY G80 (DH)

Parts Information:

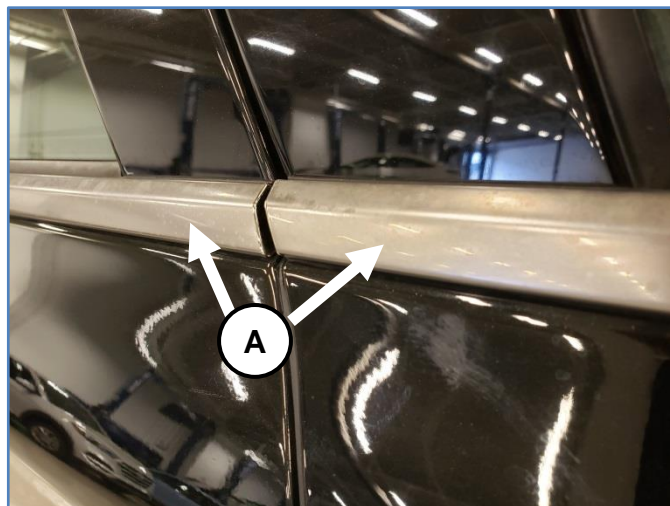
Parts Description	Qty.
3M Perfect-It Rubbing Compound (06085)	

Warranty Information:
Normal Warranty Applies.

Circulate To: General Manager, Service Manager, Parts Manager, Warranty Manager, Service Advisors, Technicians, Body Shop Manager, Fleet Repair

Service Procedure:

1. Inspect the vehicle to confirm stains on the chrome surface (A).



2. Apply detergent on stained areas and wipe using a clean microfiber cloth.

⚠ CAUTION

If stains are present on the door moldings ensure vehicle windows are down to prevent detergent transfer on windows.



3. Continue to apply detergent until stains have been removed.

