

Rear Brake Squeal/Squeak Noise

Service Category Brake

Section Brake (rear)

Market USA

Scion Supports
ASE Certification 

Applicability

| YEAR(S) | MODEL(S) | ADDITIONAL INFORMATION |
|---------|----------|------------------------|
| 2016 | iA | VDS(s): DLBYV, DLBZV |

Introduction

Some 2016 model year iA vehicles may exhibit a squeal/squeak noise from the rear during brake applications. The cause of this condition is insufficient amount of grease on the mounting points and backing plates of the rear brake assemblies. Follow the Repair Procedure in this bulletin to address this condition.

Warranty Information

| OP CODE | DESCRIPTION | TIME | OFF | T1 | T2 |
|---------|--|------|-------------|----|----|
| BR1908 | Clean and Lube Rear Brake Contact Points | 0.9 | 47043-WB001 | 36 | 99 |

APPLICABLE WARRANTY

- This repair is covered under the Toyota Basic Warranty. This warranty is in effect for 36 months or 36,000 miles, whichever occurs first, from the vehicle's in-service date.
- Warranty application is limited to occurrence of the specified condition described in this bulletin.

Parts Information

| PART NUMBER | | PART NAME | QTY |
|-------------|-------------|---------------|----------------------|
| PREVIOUS | NEW | | |
| N/A | 90118-WBB69 | Grease Packet | 2 (One Each Side) |

Rear Brake Squeal/Squeak Noise

Repair Procedure

1. Confirm the condition exists.

Does the vehicle exhibit a squeal/squeak noise from the rear during braking applications?

- **YES** — Continue to step 2.
- **NO** — This bulletin does NOT apply. Continue diagnosis using the applicable Repair Manual.

2. Remove the rear brake drum and shoe assemblies.

Refer to TIS, applicable model and model year Repair Manual:

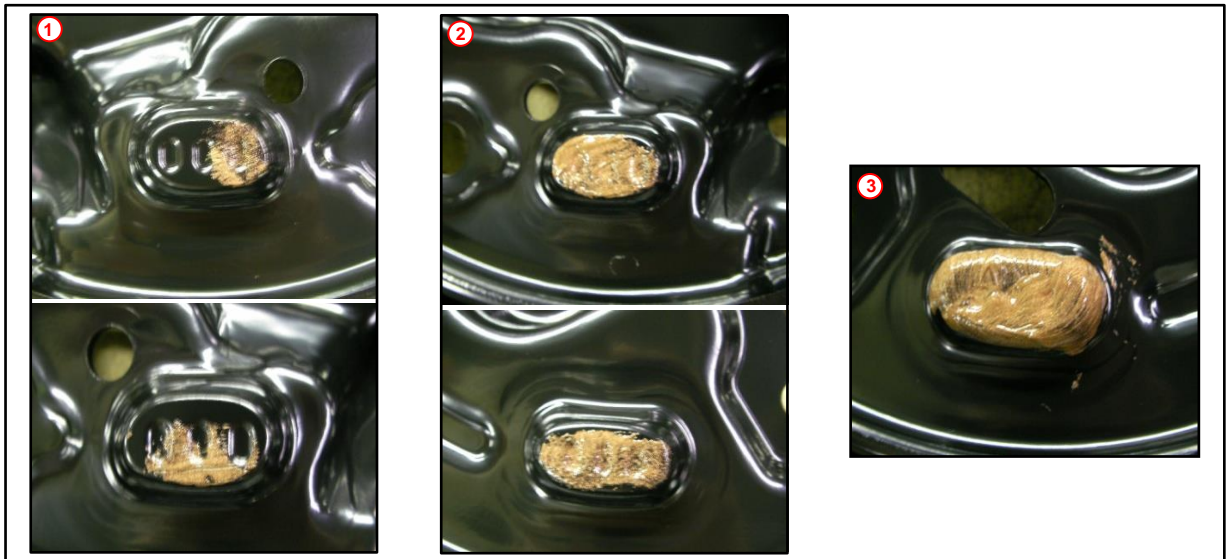
- 2016 iA:
Brake – Brake (rear) – [“Brake \(Rear\): Rear Brake: Removal”](#)

Rear Brake Squeal/Squeak Noise

Repair Procedure (continued)

- Using the figures below, confirm if the correct amount of grease is present on the rear brake components.

Figure 1. Ledge Surfaces



| | |
|---|------------------------------|
| 1 | Lack of Grease (Not OK) |
| 2 | Proper Amount of Grease (OK) |

| | |
|---|---------------------------|
| 3 | Excess of Grease (Not OK) |
|---|---------------------------|

Figure 2. Anchor Part



| | |
|---|------------------------------|
| 1 | Lack of Grease (Not OK) |
| 2 | Proper Amount of Grease (OK) |

| | |
|---|---------------------------|
| 3 | Excess of Grease (Not OK) |
|---|---------------------------|

Is the correct amount of grease present on the rear brake components?

- YES** — This bulletin does NOT apply. Continue diagnosis using the applicable Repair Manual.
- NO** — Continue to step 4.

Rear Brake Squeal/Squeak Noise

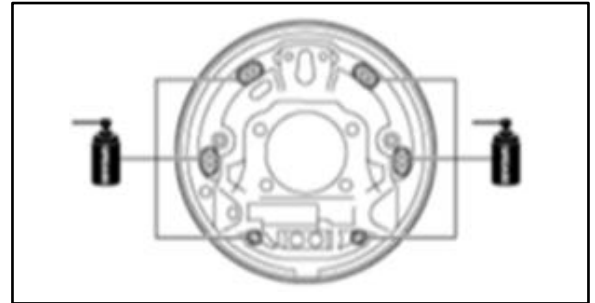
Repair Procedure (continued)

4. Apply grease to the three ledge surfaces of the backing plate while lifting the brake shoe.

NOTE

Grease application can be easily performed with a cotton swab.

Figure 3.



5. Apply grease on the bottom side of the brake shoe anchor points.

Figure 4.



6. Reinstall the rear brake shoes and drum assemblies.
Refer to TIS, applicable model and model year Repair Manual:
 - 2016 iA:
Brake – Brake (rear) – [“Brake \(Rear\): Rear Brake: Installation”](#)

7. Road-test the vehicle to confirm proper brake operation and that the condition is no longer present.