

- ATTENTION:**
- GENERAL MANAGER
  - PARTS MANAGER
  - CLAIMS PERSONNEL
  - SERVICE MANAGER

IMPORTANT - All Service Personnel Should Read and Initial in the boxes provided, right.


© 2019 Subaru of America, Inc. All rights reserved.



QUALITY DRIVEN® SERVICE

## SERVICE INFORMATION BULLETIN

**APPLICABILITY:** 2017-2019MY Impreza  
 2017-2019MY Crosstrek  
 2019MY Forester  
 2019MY Ascent

**NUMBER:** 15-243-19

**DATE:** 07/08/19

**SUBJECT:** Multi-Function Display (MFD) Customization Procedure

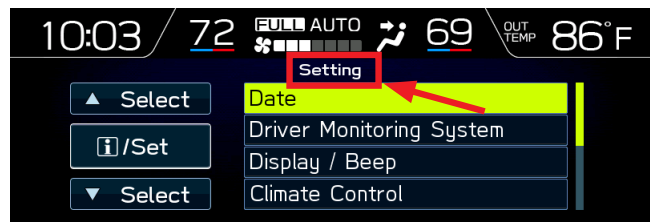
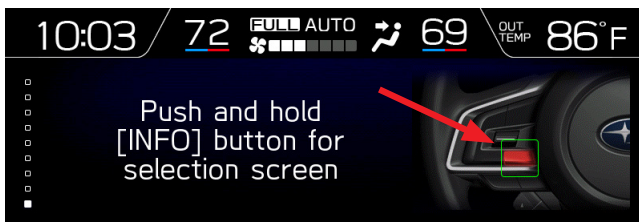
### INTRODUCTION:

This Service Information bulletin provides a procedure for customizing the maintenance period settings of the MFD. When accessing the Maintenance period information on the SSM4, the maintenance interval default values for mileage and number of months are different from those displayed on the MFD. This procedure describes how to synchronize the MFD and SSM4 values to insure proper customer notification.

### SERVICE PROCEDURE / INFORMATION:

**Step 1)** Before resetting the values for Maintenance (distance / miles or time / months) on the SSM, access and confirm the currently stored values indicated on the customization screen of the MFD.

- Set the ignition switch to “ON”.
- Access the MFD.
- Press and hold the INFO button on the steering wheel switch to display the Setting screen.



**CAUTION: VEHICLE SERVICING PERFORMED BY UNTRAINED PERSONS COULD RESULT IN SERIOUS INJURY TO THOSE PERSONS OR TO OTHERS.**

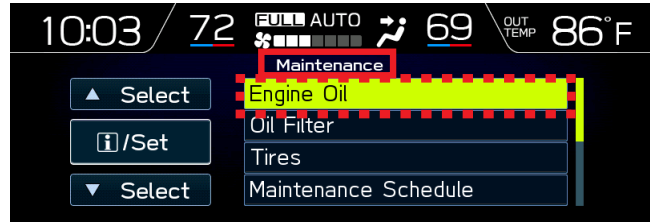
Subaru Service Bulletins are intended for use by professional technicians ONLY. They are written to inform those technicians of conditions that may occur in some vehicles, or to provide information that could assist in the proper servicing of the vehicle. Properly trained technicians have the equipment, tools, safety instructions, and know-how to do the job correctly and safely. If a condition is described, DO NOT assume that this Service Bulletin applies to your vehicle, or that your vehicle will have that condition.

**Subaru of America, Inc. is ISO 14001 Compliant**

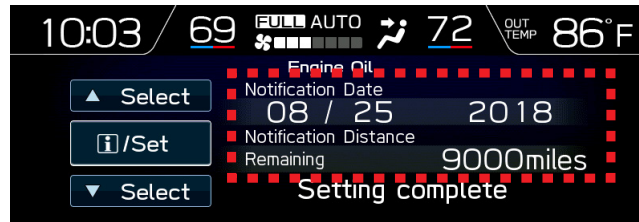
ISO 14001 is the international standard for excellence in Environmental Management Systems. Please recycle or dispose of automotive products in a manner that is friendly to our environment and in accordance with all local, state and federal laws and regulations.

*Continued...*

- Use the up / down switches (▲/▼) on the steering wheel to scroll then press the iSet button to select Maintenance from the Setting screen menu then Engine Oil from the Maintenance menu.

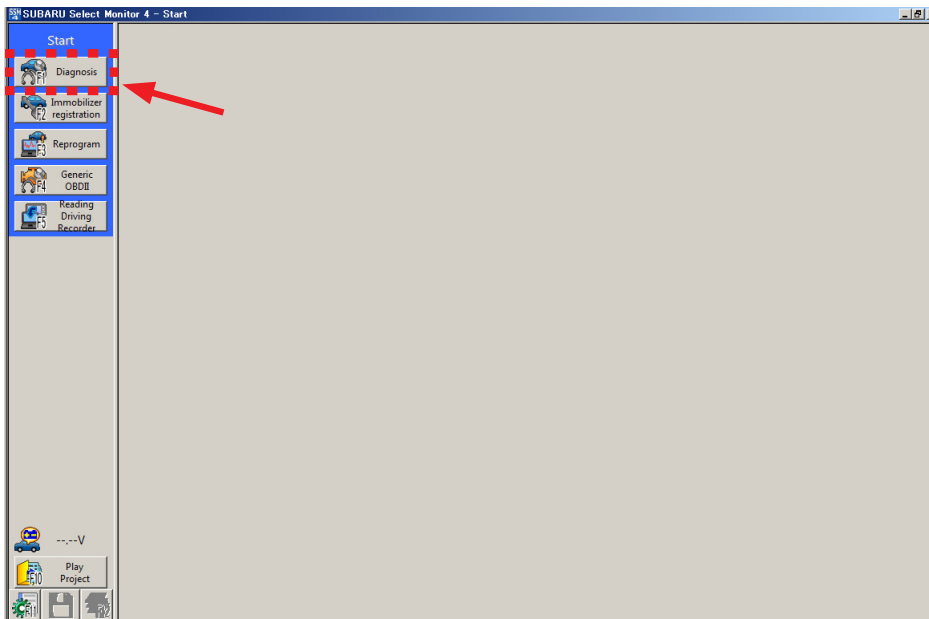


- The Notification date and Notification Distance (mileage) will be displayed for the target item as shown below. Write these values down for future reference.



**Step 2)** Connect the SSM4.

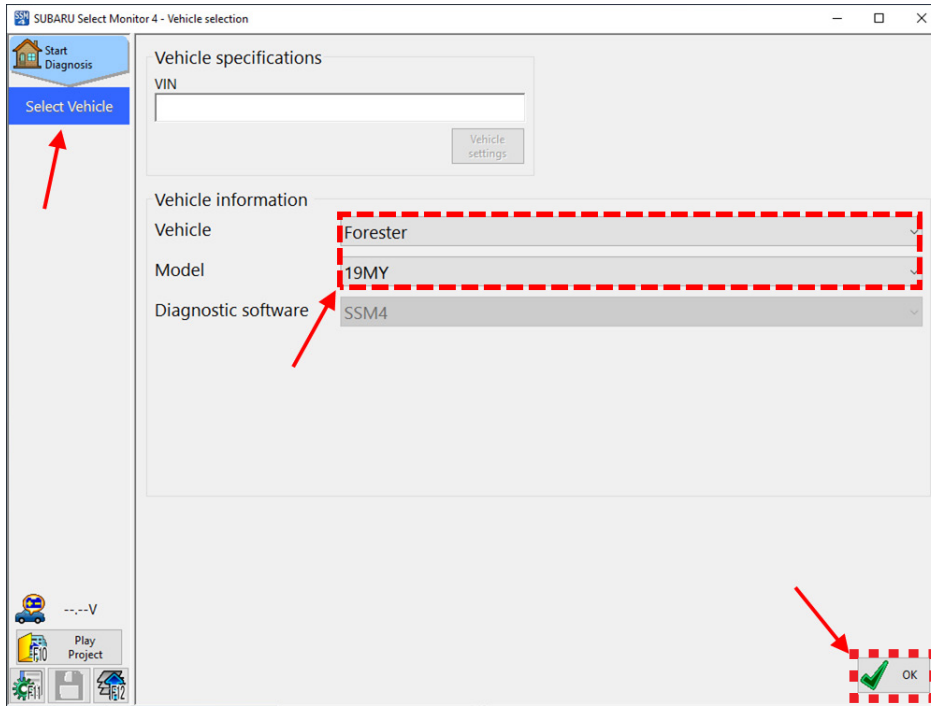
- Set the ignition switch to “ON”.
- Start the SSM4 application.
- Select **Diagnosis** from the Start screen.



*Continued...*

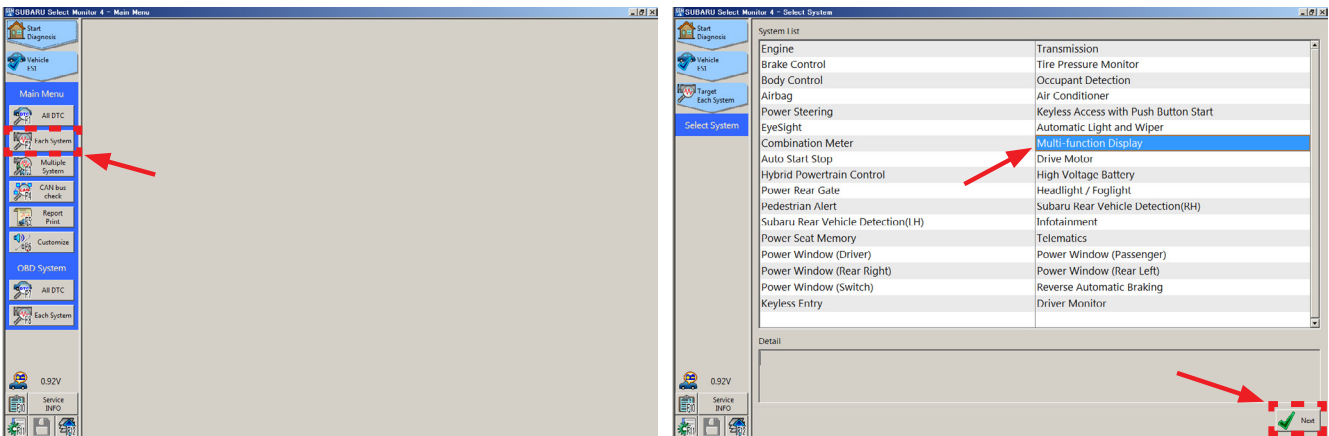
### Step 3)

- From the Vehicle selection screen, Click on **Select Vehicle**.
- Select the applicable vehicle from the drop-down lists
- Click on **OK**.



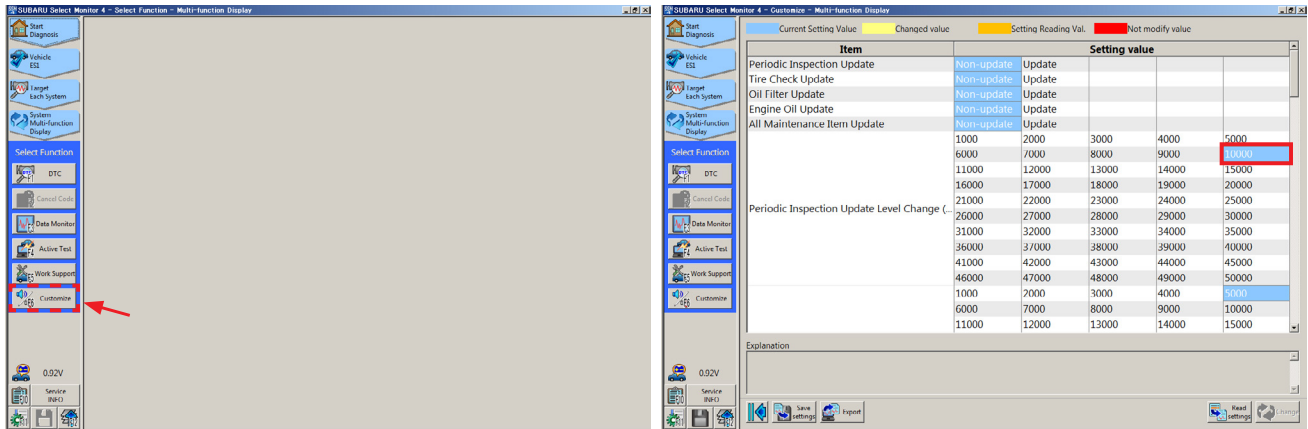
### Step 4) From the Main Menu screen:

- Select **Each System**.
- Click on **Multi-function Display**.
- Click **Next**.



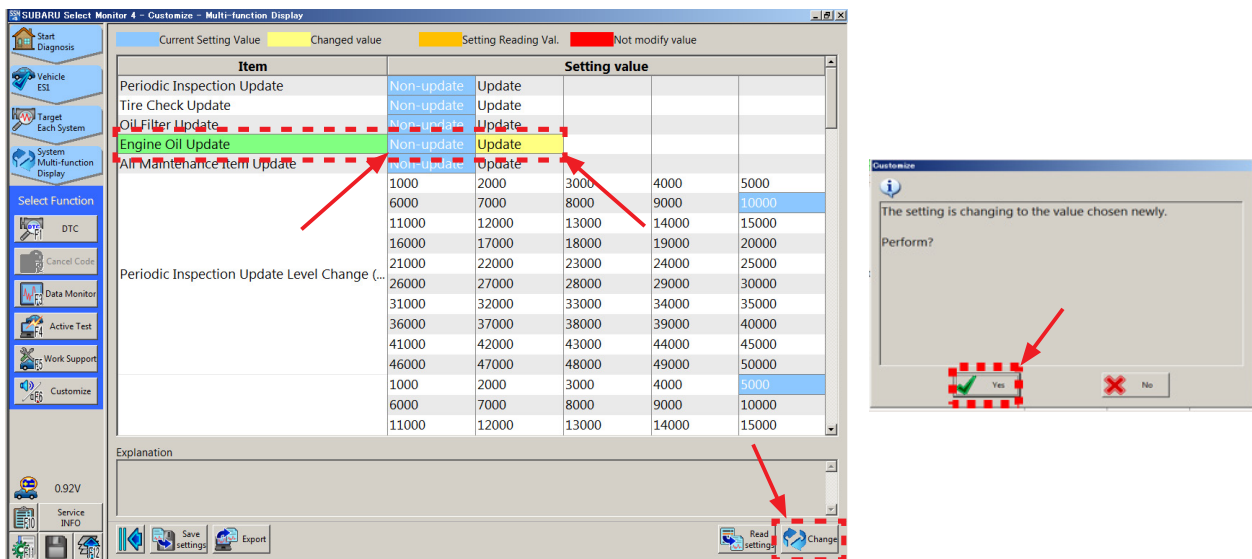
*Continued...*

**Step 5)** Select **Customize** to display the Customize - Multi-function Display screen and current settings.



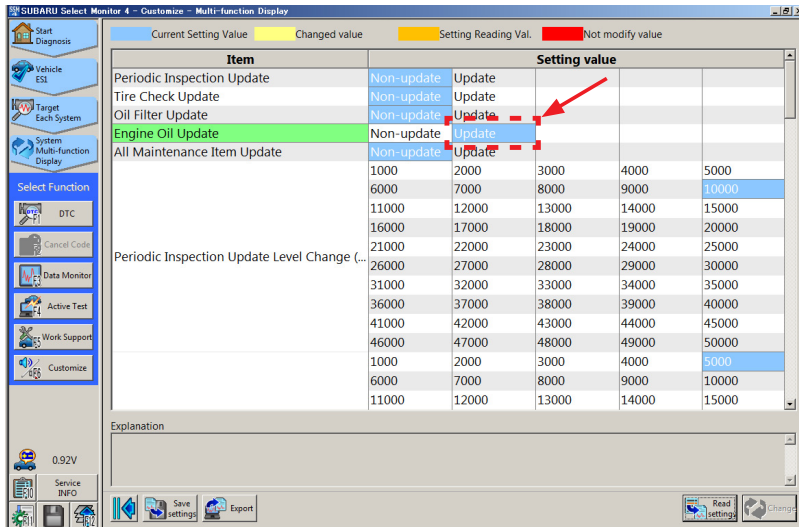
**NOTE:** As mentioned in the Introduction, the values indicated on the Customize screen most likely will not match those indicated on the customize screen of the MFD (**10,000** miles here vs. **9,000** miles on the MFD display above).

**Step 6)** Select the item to be changed (in this example, **Engine Oil Update**) from Non-update to Update on the Customize screen by clicking on **Update**. Click on **Change** to execute then **Yes** when the small pop-up box appears.

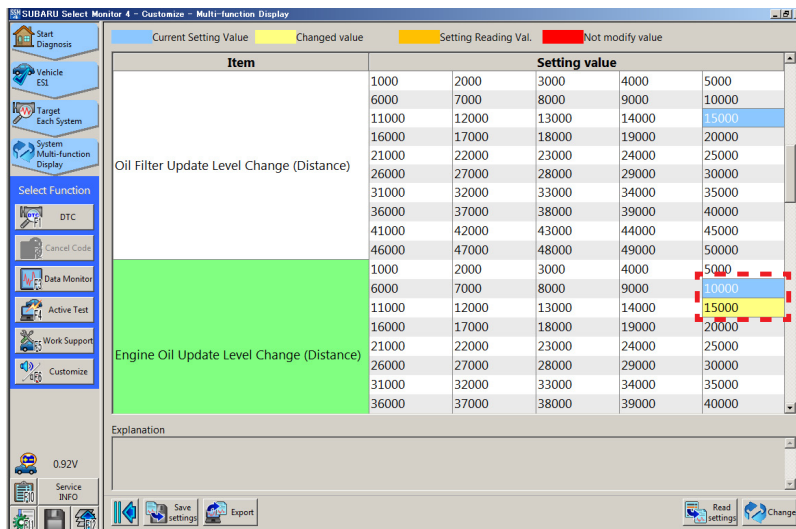


*Continued...*

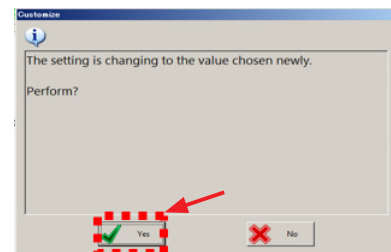
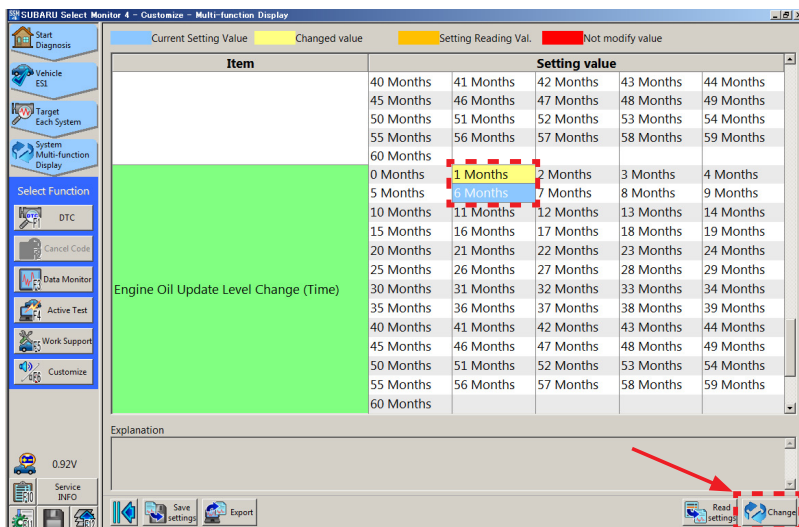
**Step 7)** Confirm the item(s) changed in Step 6 are now highlighted in blue (changed from yellow).



**Step 8)** From the list, select the update values for the items to be changed. Click on **Change** to execute then **Yes** when the small pop-up box appears.



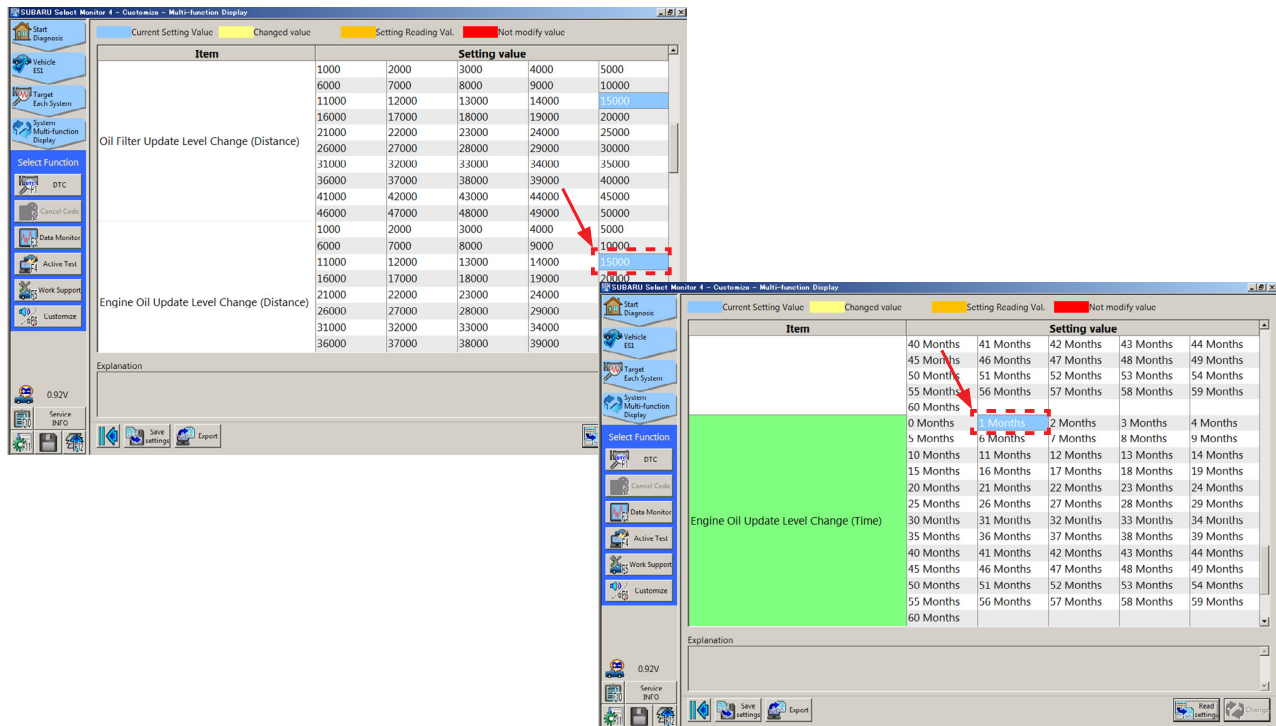
These two screens show the mileage interval for the engine oil update level interval was changed from 10,000 miles (highlighted in blue) to 15,000 miles (highlighted in yellow), and time interval was changed from 6 Months to 1 Month.



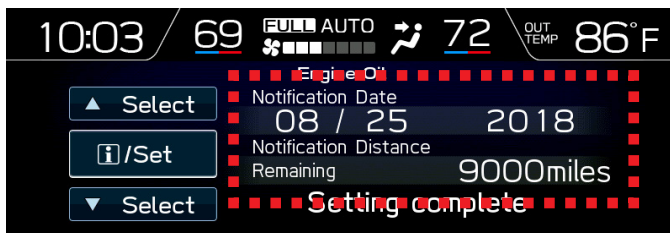
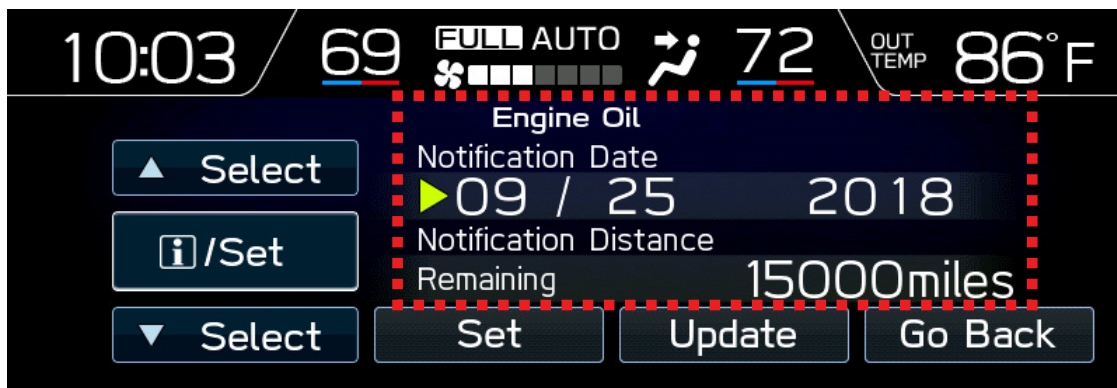
*Continued...*



**Step 9)** Confirm the new values have been saved and are displayed as shown below.



**Step 10)** To complete the procedure, confirm the newly-selected SSM4 values match those now shown in the MFD display by repeating the **Step 1** procedure above.



**NOTE:** This “Original” MFD Screen Display image is provided here for reference. The “New” Notification Date interval is just **1 month** from the original and the Notification Distance (mileage interval) increased from **9000** to 15000 miles.

“Original” MFD Screen Display

*Continued...*

**IMPORTANT REMINDERS:**

- SOA strongly discourages the printing and/or local storage of service information as previously released information and electronic publications may be updated at any time.
- Always check for any open recalls or campaigns anytime a vehicle is in for servicing.
- Always refer to STIS for the latest service information before performing any repairs.