



SERVICE CAMPAIGN BULLETIN

Classification:	Reference:	Date:
BR19-004	NTB19-051	June 26, 2019

VOLUNTARY SERVICE CAMPAIGN 2019 ROGUE; LEFT REAR BRAKE CALIPER ASSEMBLY

CAMPAIGN ID #: PC687
APPLIED VEHICLE: 2019 Rogue (T32)

**Check Service COMM or Dealer Business Systems (DBS)
National Service History to confirm campaign eligibility.**

INTRODUCTION

Nissan is conducting this voluntary service campaign on certain specific model year 2019 Rogue vehicles. The left rear brake caliper assembly will be inspected, and replaced if needed. This service will be performed at no charge to the customer for parts or labor.

IDENTIFICATION NUMBER

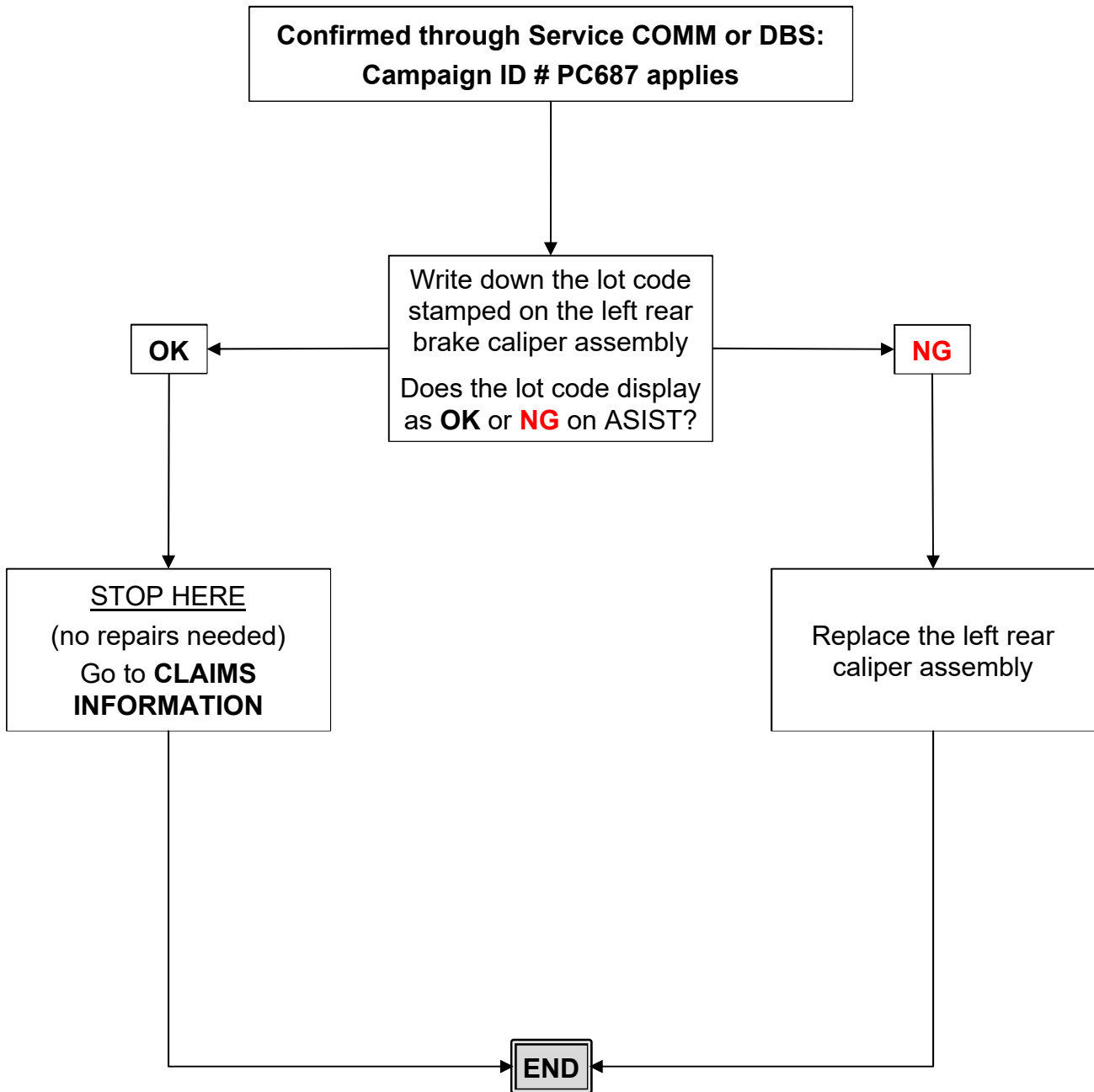
Nissan has assigned identification number PC687 to this campaign. This number must appear on all communication and documentation of any nature dealing with this campaign.

DEALER RESPONSIBILITY

Dealers are to repair vehicles falling within range of this campaign that enter the service department. This includes vehicles purchased from private parties, vehicles presented by transient (tourists) owners, and vehicles in a dealer's inventory.

Nissan Bulletins are intended for use by qualified technicians, not 'do-it-yourselfers'. Qualified technicians are properly trained individuals who have the equipment, tools, safety instruction, and know-how to do a job properly and safely. **NOTE:** If you believe that a described condition may apply to a particular vehicle, DO NOT assume that it does. See your Nissan dealer to determine if this applies to your vehicle.

REPAIR OVERVIEW



SERVICE PROCEDURE

1. Place the vehicle on a lift.
2. Remove the left rear wheel & tire assembly.



Figure 1

3. Write down, on the repair order, the lot code stamped on the left rear brake caliper assembly.

NOTE: The lot code is upside down with the left rear brake caliper assembly installed on the vehicle.

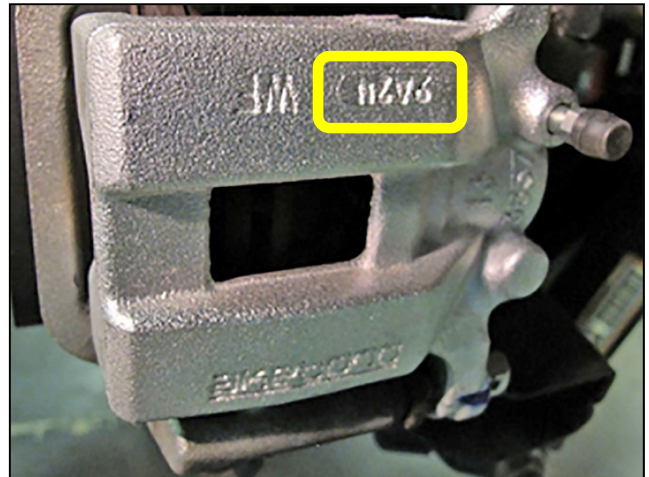


Figure 2

Figure 3 shows the left rear brake caliper assembly flipped on a bench (for viewing purposes only).

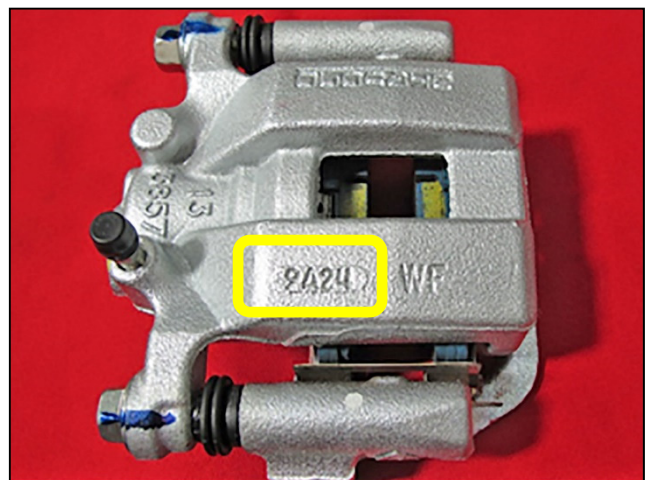


Figure 3

4. Go to ASIST. On the front page select **Tech Support Info**, and then select Bulletin Support Items.

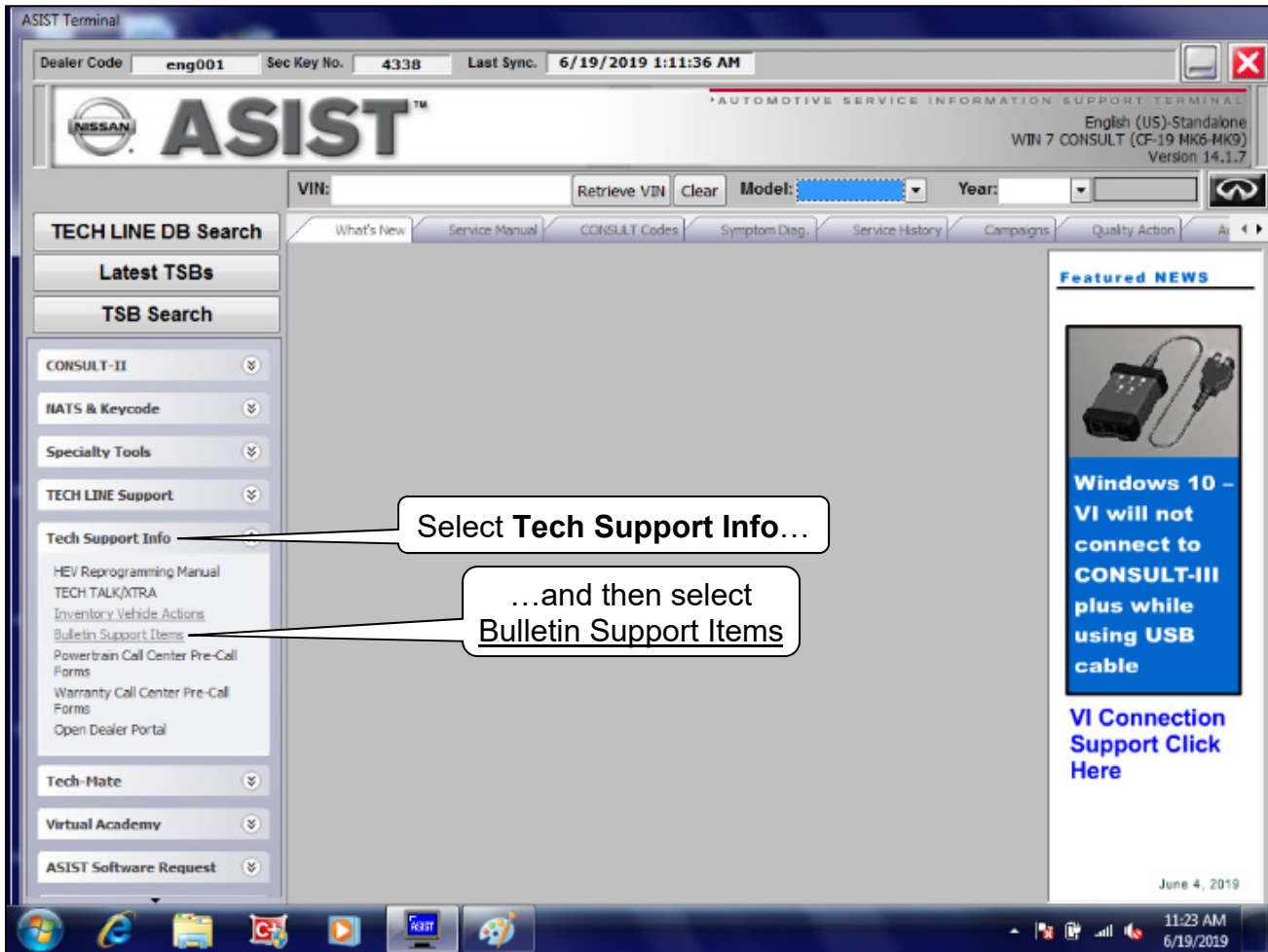


Figure 4

5. Select **CLICK HERE** next to **PC687 Rogue Rear Brake Caliper**.

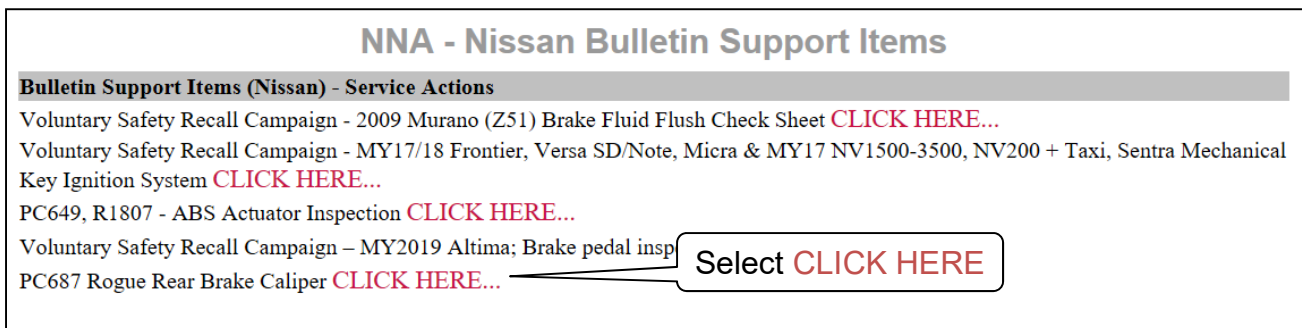


Figure 5

6. Completely fill in the page (including the lot code written down earlier), and then select **Submit**.

PC687 Rogue Rear Brake Caliper

XXXXXXXXXXXXXXXXXXXX

VIN	<input type="text"/>	}	Fill out this section...
Model Year	2019		
Model	Rogue		
Dealer Number	<input type="text"/>		
Technician Name	<input type="text"/>		
Technician ID	<input type="text"/>		
Contact E-Mail	<input type="text"/>		
Service Manager	<input type="text"/>		
Lot Code	<input type="text"/>		

...and then select **Submit**

Figure 6

7. After selecting **Submit**, either Figure 7 or Figure 8 will display.
- If Figure 7 displays, print the screen, and then STOP HERE. No repairs are necessary. Reinstall the wheel & tire assembly, and then go to **CLAIMS INFORMATION** on the last page.
 - Wheel lug nuts torque: 113 N•m (12 kg-m, **83 ft-lbs**)

PC687 Rogue Rear Brake Caliper Result

INSPECTION COMPLETE

- PART IS OK, no remedy action is required. Reinstall the wheel assembly and return the vehicle to the customer.

VIN	5N1AT2MT2KC7700000
Model Year	2019
Model	Rogue
Dealer Number	70770
Technician Name	John
Technician ID	Doe
Service Manager	John
Lot Code	01200

Select Print

Figure 7

- If Figure 8 displays, print the screen, and then replace the left rear brake caliper assembly.

PC687 Rogue Rear Brake Caliper Result

.....

IMPORTANT

CAMPAIGN AUTO ORDERING PROCESS

(Do not order parts using the standard parts process. The Part will be shipped to your dealership automatically.)

- PART INSPECTION IS NO GOOD AND REQUIRES REPLACEMENT.
- Direct any questions to Aftersales at CampaignAnnouncements@Nissan-Usa.com

VIN	5N1AT2MT2KC70220
Model Year	2019
Model	Rogue
Dealer Number	10000
Technician Name	John
Technician ID	Doe
Service Manager	John
Lot Code	00000

Select **Print**

Figure 8

- For left rear brake caliper assembly replacement, refer to the Electronic Service Manual (ESM), section BRAKE SYSTEM > REMOVAL AND INSTALLATION > REAR DISC BRAKE > **BRAKE CALIPER ASSEMBLY [(ELECTRIC PARKING BRAKE SYSTEM) or (EXCEPT ELECTRIC PARKING BRAKE SYSTEM)] > Removal and Installation.**

NOTE: When Figure 8 displays, a brake caliper and two (2) copper sealing washers are automatically ordered and shipped to the dealer.

PARTS INFORMATION

DESCRIPTION	PART NUMBER	QUANTITY
BODY & SUPPORT ASSY (Brake caliper) *	- -	1
GASKET – BRAKE HOSE (copper sealing washer) *	- -	2
Nissan Super Heavy Duty Brake Fluid (DOT 3) **	999MP-A4100P	One 12 oz. bottle

* These parts will be automatically ordered and shipped to the dealer.

** Order Nissan Super Heavy Duty Brake Fluid through the Nissan Maintenance Advantage program: Phone 877-NIS-NMA1 (877-647-6621). Website order via link on the dealer portal; www.NNAnet.com and click on the “Maintenance Advantage-Tire/Battery/Chemical” link.

CLAIMS INFORMATION

Submit a “CM” line claim using the following claims coding:

CAMPAIGN (“CM”) ID	DESCRIPTION	OP CODE	FRT
PC687	Inspect Caliper Lot Code Only	PC6870	0.2 hrs
	Inspect Caliper Lot Code and Replace Left Rear Brake Caliper Assembly	PC6871	0.6 hrs

AMENDMENT HISTORY

PUBLISHED DATE	REFERENCE	DESCRIPTION
June 26, 2019	NTB19-051	Original bulletin published