

## SERVICE BULLETIN

<b>Reference number:</b>	<b>SB-10-0409V2</b>	<b>Issued: 06 June 2019</b>
<b>Subject:</b>	<b>Fuel Filling Problem</b>	
<b>Model(s):</b>	<b>DB9, DBS, Virage and Vanquish Volante</b>	
<b>VIN Range:</b>	<b>All</b>	
<b>Applicable to:</b>	<b>All Dealers</b>	
<b>Distribute to:</b>	<b>After Sales Manager</b> <b>Executive Manager</b> <b>Service Manager</b> <b>Sales Manager</b>	<b>Warranty</b> <b>Technician(s)</b> <b>Parts</b>

Version 2 of Service Bulletin SB-10-0409V2 has been introduced to replace SB-10-0409. Amendments to this document have a black line against them in the left-side margin. Discard all copies of SB-10-0409 and replace them with SB-10-0409V2.

### Reason for this Service Bulletin

You need to do this Service Bulletin if Customers complain that they cannot easily fill their vehicles with fuel, especially if there are frequent fuel nozzle shut-offs and the Customer cannot fill the fuel tank to its capacity.

Before you do the procedure that follows, please make sure that the Customer uses the fuel filler nozzle correctly, that is to say, they hold it at 90 degrees to the vehicle. If the fuel filler nozzle does shut off, make sure that the Customer lets any gasses escape past the nozzle before they pull the trigger again.

To correct this problem, do the Workshop Procedure that follows.

### Workshop Procedure

There are three areas for improvement as follows:

- The fuel tank manufacturing tolerances can make the internal pipe too high.
- Combination of the tolerances that prevents the downward gradient between the filler neck and the tank. This is usually in the rubber section of the filler neck.
- The fuel filler neck has a reduction in diameter that prevents gas escape when you fill the fuel tank.

1. Drain the fuel tank (refer to Workshop Manual procedure 10.01.EA).
2. Measure the distance from the centre of the filling pipe inside the fuel tank to the bottom of the tank. Make sure that this distance is 178 mm (refer to Figure 1).

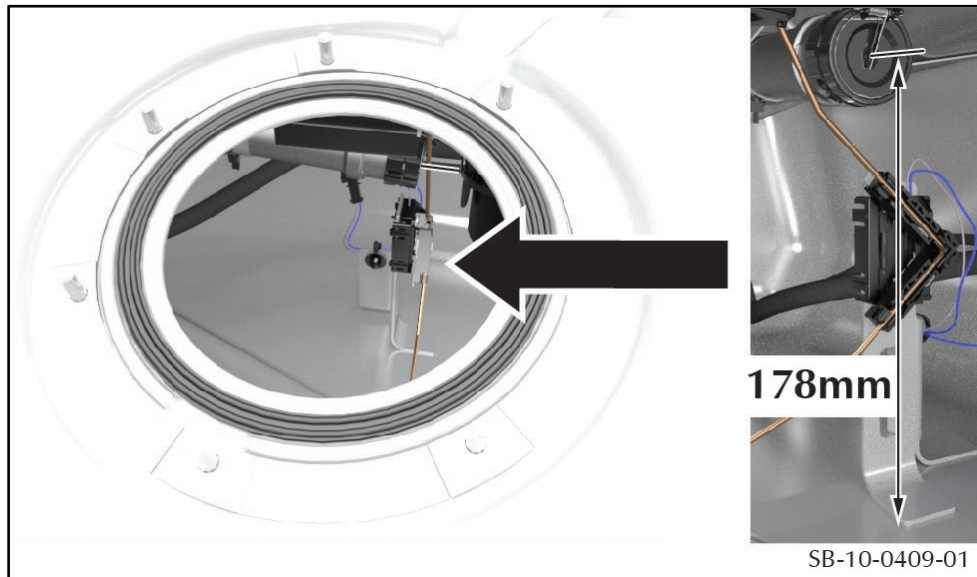


Figure 1

3. If the distance is not 178 mm, carefully bend the filling pipe inside the fuel tank and do step 2 again.
4. Make sure that the external tank filler neck (1) has a constant downward gradient. To do this, make sure that the damper casting (2) is in the highest position. Also make sure that the fuel filler neck to damper casting (3) is in the highest position (refer to Figure 2).

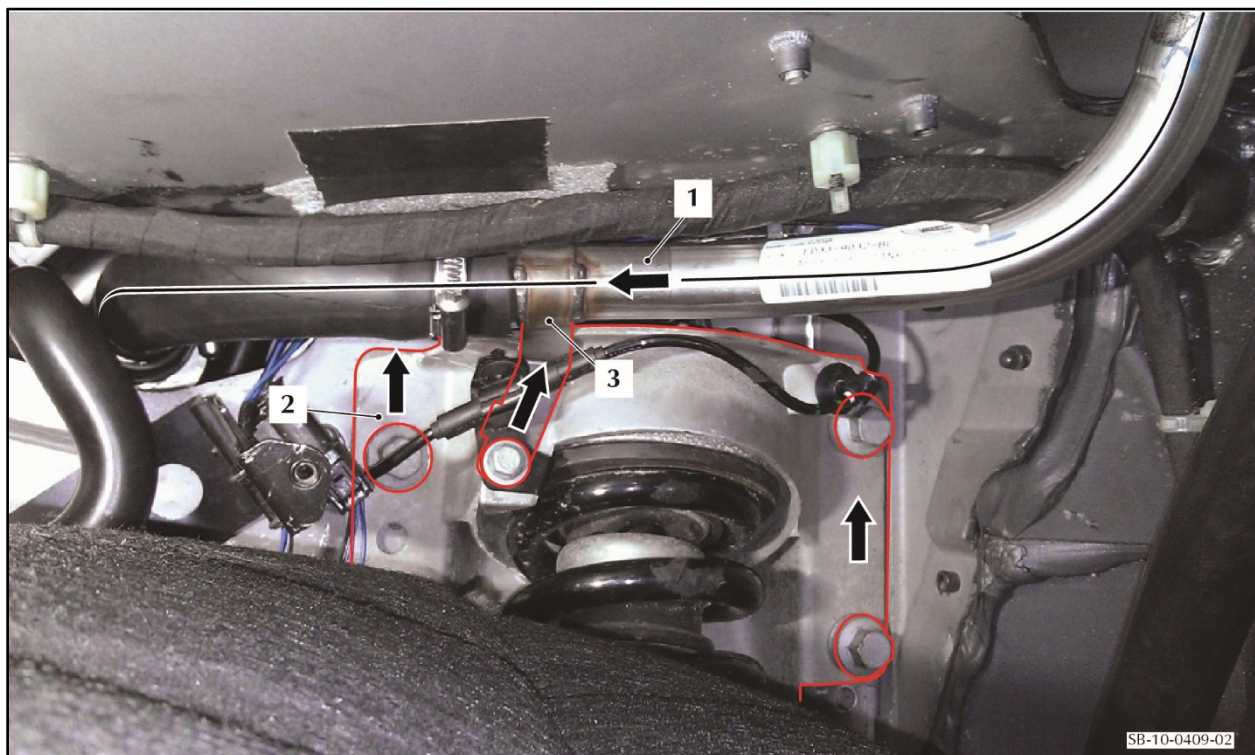


Figure 2

5. Install the access cover for the fuel tank (refer to the "Install" section of Workshop Manual procedure 10.01.AD).
6. Add fuel to the tank and make sure that the filling nozzle does not shut off frequently.
7. If the filling nozzle shuts off frequently, replace the existing fuel filler neck (1) with the replacement fuel filler neck (2) (refer to Workshop procedure 10.01.LC and Figure 3).

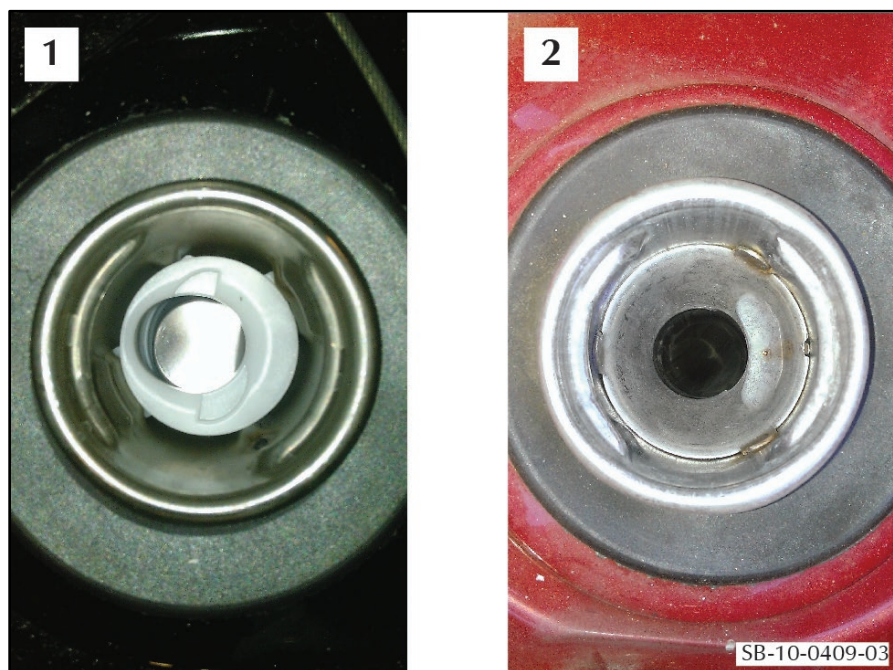


Figure 3

### Part Data

Description	Part Number	Quantity
Fuel Filler Neck	4G43-9034-BE	1

### Warranty Data

#### Procedure and Labour Time

Description	Labour Time	ROT Code
Fuel Tank (Drain and Refill) (Vanquish Volante)	0.8 Hrs	10.01.EA
Fuel Tank (Drain and Refill) (DB9, DBS and Virage)	1.15 Hrs	10.01.EA
Fuel Filler Neck (Remove and Install)	0.55 Hrs	10.01.LC

### Failure Mode Description

Select the failure modes that follow when you make a claim through the Warranty system:

Subsystem	Location	Component	Mode of Failure
LOCKS & MECHANISMS	ENGINE - FUEL SYSTEM	FUEL SYSTEM - FUEL FILLER NECK - CAP	INCORRECT PART
POWERTRAIN	ENGINE - FUEL SYSTEM	FUEL SYSTEM - FUEL FILLER NECK	INOPERATIVE - DAMAGED
POWERTRAIN	ENGINE - FUEL SYSTEM	FUEL SYSTEM - FUEL FILLER NECK - CAP	INCORRECT PART

If you have any questions related to this Service Bulletin, please contact: Aston Martin Technical Services on: +44 (0) 1926 644720, email: askamtech@astonmartin.com, or contact your After Sales Manager.

The English version of this Service Bulletin is written in Simplified Technical English to ASD-STE100™.