

Fuel Lid Door Hinge Broken

Service Category Vehicle Exterior

Section Door/Hatch

Market USA

Toyota Supports
 ASE Certification 

Applicability

YEAR(S)	MODEL(S)	ADDITIONAL INFORMATION
2011 - 2018	Sienna	

Introduction

Some 2011 – 2018 model year Sienna vehicles may exhibit a condition where the fuel lid door is loose or not flush against the vehicle body, which may prevent the driver side slide door from opening. This condition may be caused by a broken fuel lid door hinge. Follow the Repair Procedure in this bulletin to address this condition.

Warranty Information

OP CODE	DESCRIPTION	TIME	OFF	T1	T2
237371	R & R Fuel Lid Door*	0.4	77350-08020	62	12

*Use typical body shop sublet type "ZZ Other" for painting of the fuel lid door.

APPLICABLE WARRANTY

- This repair is covered under the Toyota Basic Warranty. This warranty is in effect for 36 months or 36,000 miles, whichever occurs first, from the vehicle's in-service date.
- Warranty application is limited to occurrence of the specified condition described in this bulletin.

Parts Information

PART NUMBER	PART NAME	QTY
04009-02808	Fuel Lid Door Assy	1
90269-A0005	Rivet	2

Fuel Lid Door Hinge Broken

Required Tools & Equipment

REQUIRED TOOLS & MATERIAL	QUANTITY
Drill	1
Drill Bit, 11/32 in.	1
Nut Setter Kit (P/N HK-150 Series)	1

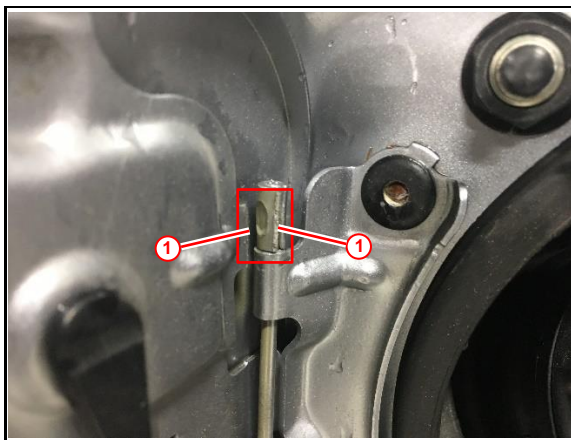
NOTE

The nut setter kit is stocked by most dealers. Check before ordering.

Repair Procedure

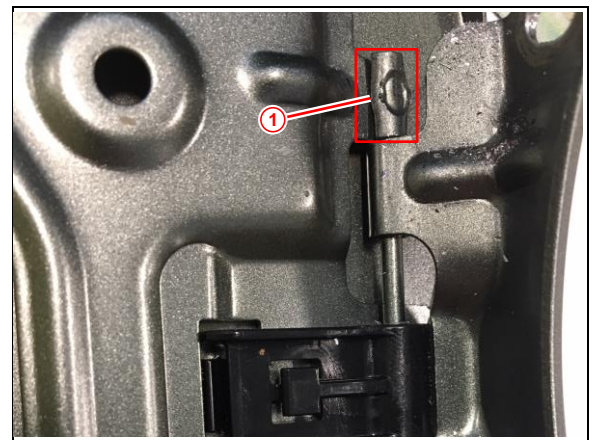
1. Confirm the condition exists.
 Open the fuel lid door.
 Is the fuel lid door hinge broken as shown?
 - **YES** — Continue to step 2.
 - **NO** — This bulletin does NOT apply. Continue diagnosis using the applicable Repair Manual.

Figure 1. NG Condition



1 Fuel Lid Door Hinge Broken Away From Fuel Lid Door Hinge Pin

Figure 2. OK Condition



1 Fuel Lid Door Hinge and Fuel Lid Door Pin Are Connected

Fuel Lid Door Hinge Broken

Repair Procedure (continued)

2. Confirm if the fuel lid door stopper is present.
Is the fuel lid door stopper present?
 - **YES** — Continue to step 3.
 - **NO** — Order the fuel lid door stopper P/N 77358-30060 and continue to step 3.

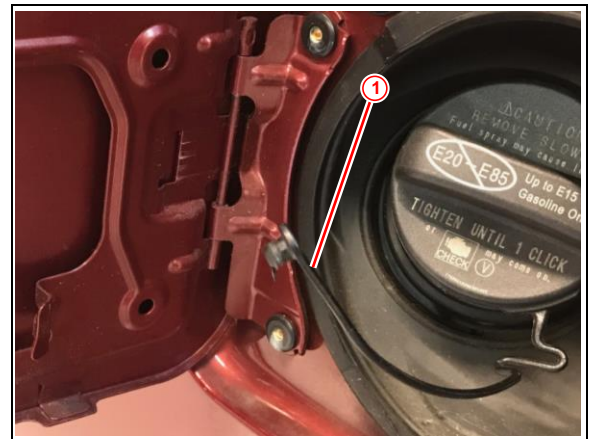
Figure 3.



1	Fuel Lid Door Stopper
----------	------------------------------

3. Unlatch the fuel lid door plastic tether.

Figure 4.



1	Fuel Lid Door Plastic Tether Unlatched
----------	---

Fuel Lid Door Hinge Broken

Repair Procedure (continued)

4. Remove the two fuel lid door rivets using a drill with a 11/32-in. bit.

NOTE

- Use masking tape to protect the fuel lid door area from scratches.
- The rivets will naturally release into the vehicle due to a lack of structural support.
- Rivets do NOT come with the fuel lid door assembly.

Figure 5.



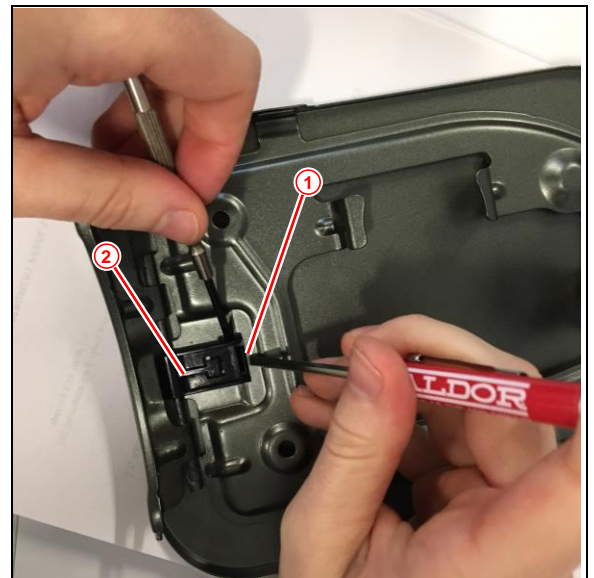
5. Gently remove the fuel lid door.

NOTE

Sublet the NEW fuel lid door to a body shop to be painted to match the OLD fuel lid door.

6. Remove the fuel lid door stopper if present.
 - A. Engage the stopper tab using a small tool or your fingers.
 - B. Lift the fuel lid door stopper out of the inner fuel door and remove it from the hinge pin.

Figure 6.



1	Inner Fuel Door
2	Hinge Pin

Fuel Lid Door Hinge Broken

Repair Procedure (continued)

7. Reinstall the fuel lid door stopper. If the fuel lid door stopper was NOT present originally, install the NEW fuel lid door stopper P/N 77358-30060.

8. Clean the fuel lid door area with an air gun.

Figure 7.



9. Install the NEW fuel lid door.
 - A. Align the NEW fuel lid door with the rivet holes.
 - B. Install the NEW rivets.

NOTE

The rivet holes are the same size and do NOT need to be widened to remove the rivets and/or the fuel lid door.

Figure 8.

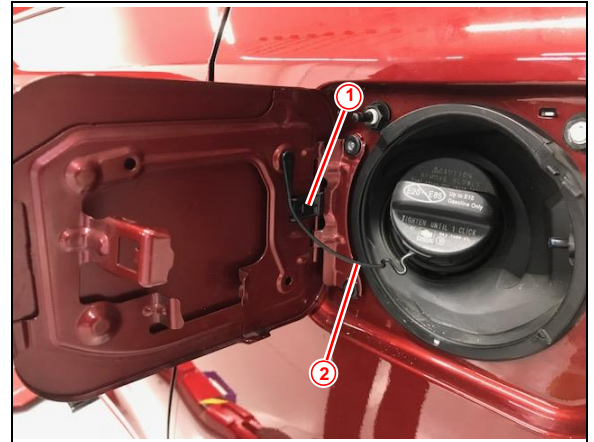


Fuel Lid Door Hinge Broken

Repair Procedure (continued)

10. Reattach the plastic tether.

Figure 9.



1	Fuel Lid Door Stopper
2	Plastic Tether

11. Close the door to check for fit and body interference.

Figure 10.



12. Clean the fuel lid door panel area of ANY foreign dirt or metal fillings.

13. Cycle the fuel lid door by opening and closing it once to confirm full functionality.