

REFERENCE:	Nova Bus Manuals
SECTION:	14: Auxiliary heater
RS N°:	MQR 7621-1299

APPLICATION DEADLINE:N/A

SUBJECT:	Auxiliary heater
JUSTIFICATION:	Availability of a dust protection kit to remove the maintenance need to clean the flame sensor sight glass when excessive soot or debris is accumulated on the internal burner head disc.

LEVEL	DESCRIPTION	DIRECT CHARGES		TIME
		LABOUR	MATERIAL	
1	Install a dust protection kit.	Client	Client	40 min.
2	-	-	-	-

MATERIAL

QTY	PART N°	REV.	DESCRIPTION	REPLACES PART N°
LEVEL 1				
1	N97086-01	-	KIT DUST PROTECTION TUBE	-
LEVEL 2				
-	-	-	-	-

Materials will be available within 30 days once your order has been placed. To order, please contact Prevost Parts by phone at 1-800-771-6682, by fax at 1-888-668-2555 or by email at prevostparts.commandes@volvo.com. Specify document number, quantity of parts required and shipping address.

DISPOSAL OF PARTS

REMOVED PARTS ARE:	DISCARDED *	RETAINED	* Dispose of the unused parts and the defective parts in accordance with local environmental standards in effect.
	Yes	-	

REVISION HISTORY

REV.	DATE	CHANGE DESCRIPTION	WRITTEN BY
NR	2018DE14	Initial release	André Pelletier
R1	2019JU19	Added Rochester on client list, see p.3	André Pelletier

APPROVED BY:

PAGE 1 OF 7

Symbol	Meaning
Empty Field	No changes, the procedure applies
+	Contract added, the procedure applies
-	Contract removed, the procedure does not apply

SYMBOL	CLIENT	ORDER	ROAD NUMBER		VIN (2NVY/4RKY...)		QTY
			FROM	TO	FROM	TO	
	Academy Busline - New Jersey	LA13	—	—	L82J4G9775611	L82J5G9775620	10
	Ames Transportation Agency - Iowa	L904	6101	6104	S92J1G9775221	S92J7G9775224	4
	Barrie Ontario - Metrolinx	L878	1501	1504	L82JXF3001691	L82J6F3001719	4
	Barrie Ontario - Metrolinx	L955	1601	1604	L82J7G9775408	L82J9G9775412	4
	Barrie Ontario - Metrolinx	LA31	1701	1705	L82J0H9775817	L82J2H9775821	5
	BC Transit - BCT - British Columbia	L858	9447	9481	L82JXE3001401	L82J5F3001436	35
	BC Transit - BCT - British Columbia	L891	—	—	L82J5F3001565	L82J2F3001569	5
	Brampton - Ontario	L789	1401	1408	L82J4E3001216	L82J1E3001223	8
	Brampton - Ontario	L816	1409	1415	L82J3E3001224	L82J9E3001230	7
	Brampton - Ontario	L864	1501	1510	L82JXF3001500	L82J6F3001509	10
	Brampton - Ontario	L865	1511	1519	L82JXF3001514	L82J9F3001522	9
	Brampton - Ontario	L941	1614	1623	L82J1G3750123	L82J2G3750132	10
	Brampton - Ontario	L942	1601	1613	L82J6G3750070	L82J4G3750083	13
	Brandon - Manitoba	L899	67	70	L82J2G3750180	L82J8G3750183	4
	Brantford - Ontario	L928	10151	10153	L82J7F3001793	L82J0F3001795	3
	Burlington - Ontario	L887	7017-15	7025-15	L82J7F3001681	L82J8F3001723	9
	Cornwall Ontario - Metrolinx	L935	—	—	L82J3F3001838	L82J5F3001839	2
	CT Transit - Connecticut	L814	1462	1473	S92LXE4500717	S92L4E4500728	12
	CT Transit - Connecticut	L815	1426	1429	S92L0E4500709	S92L0E4500712	4
	Duke University - North Carolina	L938	—	—	L82L8G9775399	L82L0G9775400	2
	Duke University - North Carolina	LB08	—	—	L82L9J3751562	L82L2J3751578	3
	Duke University - North Carolina	LA38	—	—	L82L9H9775994	L82L9H9775994	1
	Duke University - North Carolina	LA39	—	—	S92LXH9775995	S92LXH9775995	1
	Durham Region Transit Ontario - Metrolinx	L872	8551	8553	L82J0F3001523	L82J4F3001525	3
	Durham Region Transit Ontario - Metrolinx	L888	8554	8559	L82J2F3001703	L82J1F3001708	6
	Durham Region Transit Ontario - Metrolinx	L996	8560	8563	L82J1G3750414	L82J7G3750417	4
	Durham Region Transit Ontario - Metrolinx	LA19	8564	8565	L82J9G3750418	L82J0G3750419	2
	Fredericton - New Brunswick	L812	—	—	L82J4E3001202	L82J4E3001202	1
	Fredericton - New Brunswick	L836	8143	8143	L82J9E3001390	L82J9E3001390	1
	Fredericton - New Brunswick	L901	8151	8151	L82J7F3001602	L82J7F3001602	1
	Fredericton - New Brunswick	L968	8161	8162	L82J1G3750218	L82J3G3750219	2
	Grande Prairie Alberta	L834	—	—	L82J7E3001386	L82J2E3001389	4

Symbol	Meaning
Empty Field	No changes, the procedure applies
+	Contract added, the procedure applies
-	Contract removed, the procedure does not apply

SYMBOL	CLIENT	ORDER	ROAD NUMBER		VIN (2NVY/4RKY...)		QTY
			FROM	TO	FROM	TO	
	Guelph - Ontario	L835	240	243	L82J0E3001391	L82J6E3001394	4
	Guelph - Ontario	L927	244	247	L82J1F3001756	L82J9F3001763	4
	Guelph - Ontario	L985	248	251	L82J7G3750255	L82J2G3750258	4
	Kingston - Ontario Metrolinx	L880	1502	1502	L82JXF3001786	L82JXF3001786	1
	Kingston - Ontario Metrolinx	L889	1687	1689	L82J1G3750252	L82J5G3750254	3
	Kingston - Ontario Metrolinx	L925	1504	1510	L82J5F3001808	L82J5F3001811	4
	Kingston - Ontario Metrolinx	L954	1683	1686	L82J4G3750259	L82J4G3750262	4
	Lethbridge - Alberta	L868	—	—	L82J2F3001510	L82J2F3001510	1
	Milton - Ontario - Metrolinx	L884	1701	1702	L82J0G3750338	L82J2G3750339	2
	NFTA - Buffalo, New York	LA30	1717	1724	L82J8H9775838	L82J5H9775845	8
	NFTA - Buffalo, New York	LB21	1817	1824	L82J9J9776518	L82J8J9776526	8
	North Bay - Ontario	L895	784	785	L82J7F3001678	L82J9F3001679	2
	North Bay - Ontario	L979	786	787	L82J4G3750312	L82J6G3750313	2
	Oakville Ontario - Metrolinx	L874	—	—	L82J6F3001526	L82JXF3001531	6
	Oakville Ontario - Metrolinx	L881	—	—	L82J2F3001717	L82J8F3001740	5
	Oakville Ontario - Metrolinx	L945	—	—	L82J9G3750211	L82JXG3750217	7
	Orillia Ontario - Metrolinx	L965	1722	1724	L82J3G3750320	L82J7G3750322	3
	Peterborough - Ontario	L870	61	63	L82JXF3001612	L82J3F3001614	3
	Peterborough - Ontario	L919	64	66	L82J6F3001767	L82JXF3001769	3
	Peterborough - Ontario	L966	67	71	L82J2G3750230	L82JXG3750234	5
	Red Deer - Alberta	L772	1106	1108	L82J2E3001120	L82J6E3001122	3
	Red Deer - Alberta	L813	10008	10009	L82J2E3001361	L82J4E3001362	2
	Red Deer - Alberta	L869	—	—	L82J9F3001570	L82J0F3001571	2
	Red Deer - Alberta	L926	—	—	L82J2F3001796	L82J4F3001797	2
	Regina - Saskatchewan	L807	671	685	L82J8E3001137	L82J2E3001151	15
	Regina - Saskatchewan	L892	686	691	L82J5F3001484	L82J4F3001489	6
	Regina - Saskatchewan	L949	692	696	L82J3G3750205	L82J0G3750209	5
	Regina - Saskatchewan	L992	—	—	L82J6G3750294	L82J3G3750298	5
+	Rochester New York - RTS	LB76	1901	1901	L82J3K9777052	L82J3K9777052	1
	Sarnia Ontario	L873	151	152	L82J0F3001599	L82J0F3001600	2
	Sarnia Ontario	L883	153	153	L82J4G3750021	L82J4G3750021	1
	Sarnia Ontario	L963	162	162	L82J7G3750305	L82J7G3750305	1
	Saskatoon - Saskatchewan	L831	1401	1405	L82J7E3001307	L82J9E3001311	5

Symbol	Meaning
Empty Field	No changes, the procedure applies
+	Contract added, the procedure applies
-	Contract removed, the procedure does not apply

SYMBOL	CLIENT	ORDER	ROAD NUMBER		VIN (2NVY/4RKY...)		QTY
			FROM	TO	FROM	TO	
	Saskatoon - Saskatchewan	L894	1501	1510	L82J0F3001490	L82J7F3001499	10
	Saskatoon - Saskatchewan	L953	1601	1610	L82J9G3750158	L82JXG3750167	10
	Sault Ste. Marie Ontario	L934	—	—	L82JXG3750038	L82JXG3750038	1
	St. Catharines Ontario - Metrolinx	L879	1501	1504	L82J4F3001587	L82J4F3001590	4
	St. Catharines Ontario - Metrolinx	L882	1601	1605	L82J9G3750225	L82J9G3750229	5
	St. Catharines Ontario - Metrolinx	L898	1560	1560	S92J4F3001663	S92J4F3001663	1
	St. John - New Brunswick	L871	40585	40586	L82J8F3001592	L82JXF3001593	2
	St. John - New Brunswick	L939	40687	40687	L82J0G3750078	L82J0G3750078	1
	St. John's - Newfoundland	L808	1415	1419	L82J4E3001152	L82J1E3001156	5
	St. John's - Newfoundland	L875	1520	1525	L82JXF3001478	L82J3F3001483	6
	St. John's - Newfoundland	L930	1626	1630	L82J7F3001826	L82J9F3001830	5
	Stratford - Ontario	L893	—	—	L82J9F3001584	L82J0F3001585	2
	Sudbury - Ontario	L890	851	855	L82JXF3001609	L82J6F3001641	5
	Thunder Bay - Ontario	L806	—	—	L82J6E3001170	L82J8E3001171	2
	Thunder Bay - Ontario	L863	—	—	L82J8F3001558	L82J6F3001560	3
	Thunder Bay Ontario - Metrolinx	L944	—	—	L82J6G3750084	L82JXG3750086	3
	Thunder Bay Ontario - Metrolinx	LA01	—	—	L82J5H3750448	L82J7H3750449	2
	Timmins - Ontario	L839	—	—	L82J8E3001395	L82J8E3001395	1
	Vancouver Airport Authority - YVR British Columbia	L856	705	706	L82LXH3750530	L82L1H3750531	2
	Vancouver Airport Authority - YVR British Columbia	L912	173	178	L82L5F3001812	L82L4F3001817	6
	Welland Ontario - Metrolinx	L866	—	—	L82J9F3001648	L82J9F3001648	1
	Welland Ontario - Metrolinx	L933	—	—	L82J1G3750011	L82J1G3750011	1
	Welland Ontario - Metrolinx	L991	—	—	L82J9G3750287	L82J9G3750287	1
	Windsor Ontario - Metrolinx	L886	570	577	L82J8F3001818	L82J5F3001825	8
	Woodstock - Ontario	L832	—	—	L82J9E3001342	L82J9E3001342	1
	Woodstock - Ontario	L923	15-16	15-16	L82J9F3001746	L82J9F3001746	1
	York Regional Transit - Ontario	L896	1501	1517	L82J2F3001619	L82JXF3001741	17
	York Regional Transit - Ontario	L936	1518	1518	L82J3G3750012	L82J3G3750012	1
	York Regional Transit - Ontario	L964	1770	1774	S92J6G3750420	S92J3G3750424	5
	York Regional Transit - Ontario	L967	1601	1621	L82J2G9775414	L82J8G9775627	21
	York Regional Transit - Ontario	LA07	1701	1715	L82J9G3750340	L82JXG3750363	15

**WARNING**

FOLLOW YOUR INTERNAL SAFETY PROCEDURES.

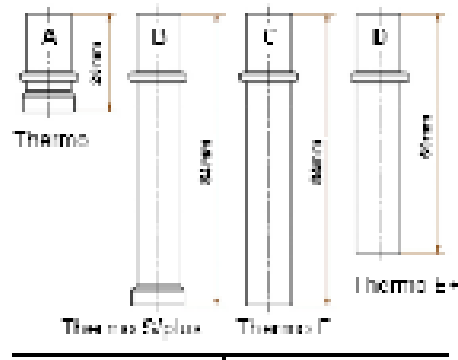
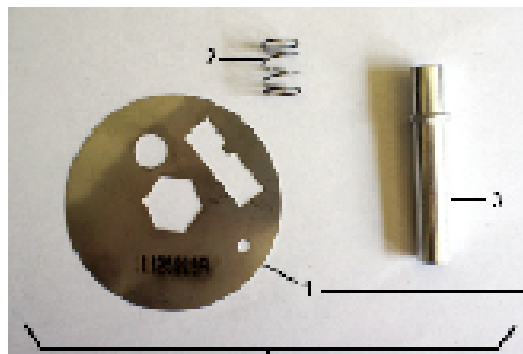
PROCEDURE**NOTE**

The following procedure is provided by Valeo. Nova Bus cannot be held responsible for its content.

PARTS & SERVICE

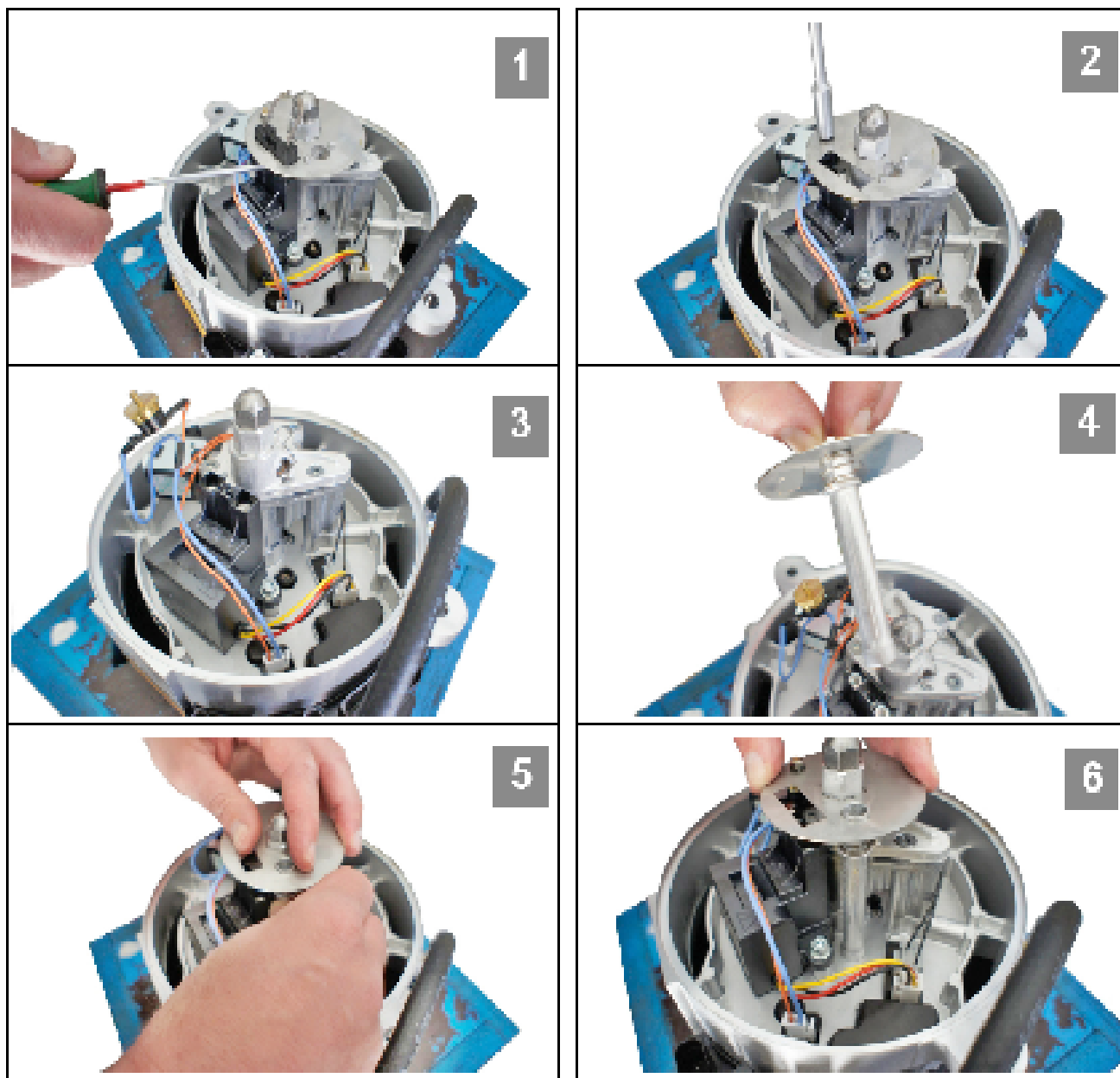
Heating systems

Installation instructions dust protection kit



		KH (1)+(2)+(3)	(1)	(2)
Thermo	•	11130322	11125807	A
Thermo		11130323	11125809	A
Thermo S	--	11130324	11125816	B
Thermo F	•	11130325	11125819	C
Thermo E		11130326_	11125816_	C
Thermo plus	•	11130328	11125816	B
Thermo plus		11130327	11125819	B
Thermo E+	•	11130329_	11125816_	D
Thermo F+		11130330	11125819	D

			(1)	(2)	(3)
DE	Bauchflie	- Dföfenstockverwärmung	Schelle	Feder	Schutzrohr
FR	series	• inertia block preheater	disq	spring	protection tube
FR	type	• chauffage de porte d'acier	disque	ressort	tube protection
IT	serie	- preriscaldio portauccello	rondella	molla	protezione



Installation instructions dust protection kit



NOTE:

The installation is shown on a Thermo plus heater. The illustrations are therefore exemplary for other heater models. The installation principle is identical for all heater models.

Use these installation instructions together with the Workshop Manual (WM) of your heater model. The WM is available for download from the Valeo website.



1. Remove burner head (refer to WM).
2. Remove ignition electrodes (refer to WM)[1].
3. If installed, remove Thermostat [2].
4. Remove disc and discard it [3].
5. Pre-assemble new disc, tube and spring [4].
6. Place new disc, tube and spring into position [5]: Place disc via atomizer nozzle onto the nozzle block. The lower end of the tube is thereby pushed onto the lens of the flame guard. Then turn the disc so that the ignition electrode can be replaced. Make sure that the components are correctly seated [6].
7. If required, reinstall the thermostat. Pay attention to the correct positioning of the serrated washer.
8. Reinstall ignition electrodes (refer to WM).
9. Reinstall burner head (refer to WM).