

Super Chrome Wheel Cleaning Best Practices

Service Category Suspension

Section Tire/Wheel

Market USA

Lexus Supports
ASE Certification 

Applicability

YEAR(S)	MODEL(S)	ADDITIONAL INFORMATION
2013 - 2014, 2019	ES300H	
2012 - 2014, 2019	ES350	
2016 - 2019	GS F	
2016 - 2017	GS200T, IS200T	
2011, 2013 - 2018	GS350, GS450H	
2011	GS460	
2014 - 2019	GX460	
2012 - 2015	IS250	
2016 - 2018	IS300, RX350, RX450H	
2012 - 2018	IS350	
2012 - 2014	LS460, LS600H	
2018	LS500, LS500H	
2015 - 2019	NX200T, NX300H	

Super Chrome Wheel Cleaning Best Practices

Introduction

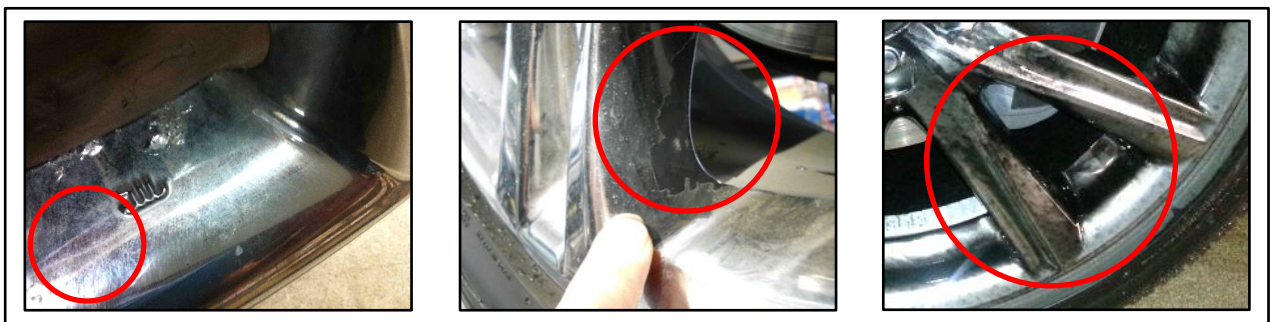
Some 2011 – 2019 model year Lexus vehicles (including RX350HL, RX450HL, LS460L, and LS600HL) with super chrome wheel finishes may become discolored and/or damaged when aftermarket cleaners, polishes, or brake dust removal products are used on wheels with super chrome finishes. Wheel cleaners and polish that contain acidic substances may damage the clear coat of the wheel, resulting in the undercoating (black) to become visible.

See Figures 1 and 2 below for examples of wheel finishes damaged by aftermarket products.

Figure 1. Example of Black Spotting



Figure 2. Additional Examples of Black Spotting (Not Brake Dust)



Warranty Information

OP CODE	DESCRIPTION	TIME	OFF	T1	T2
N/A	Not Applicable to Warranty	–	–	–	–

Super Chrome Wheel Cleaning Best Practices

Best Practices

- Do NOT use cleaning products that contain acidic chemicals (ex. phosphoric acid or sulfuric acid), alkaline, or abrasive detergent/polish/cleaner.
- Clean the wheels using a soft towel with warm water and a neutral detergent/soap.
- Use water to wash off detergent/soap immediately.
- Cleaner/detergent/polish for super chrome painted and/or super chrome alloy wheels contain chemicals that can damage the wheel clear coat.

NOTE

If using a wheel cleaning product, first test it in an area NOT visible to the customer.