

BR205 Facelift - Blind Spot Assist may activate without obvious cause

Topic number	LI54.71-P-068935
Version	3
Function group	54.71 Camera and radar-assisted assistance systems
Date	05-02-2019
Validity	The topic only affects BR205 as of facelift (YoM 809) with code 234 (Blind Spot Assist) or code 23P (Driving Assistance Package).
Reason for change	Update validity
Reason for block	

Complaint:

Blind Spot Assist apparently reacts without obvious cause.

Attachments	
File	Description
Beanstandung.png	Example of warning without obvious cause
Kratzer.JPG	Scratch in front of sensor

Cause:

The inside of the rear bumper may have been ground down or scratched in front of one of the rear radar sensors (see example pictures).

Certain marks from the manufacturing process are permissible (see picture "Permissible mark") - this is intended to refer to obvious score marks and marks from manual processing.

Under certain circumstances, the score marks in the plastic could reflect the radar signals emitted by the sensor.

Furthermore, the inside of the bumper must not exhibit

- any swirl marks
- cables
- adhesive labels

in front of the radar sensor.

Attachments	
File	Description
Sichtfeld Sensor.jpg	Swirl marks in front of sensor
Sensor montiert.jpg	Bumper with mounted sensor
Sensor demontiert.jpg	Bumper with removed sensor
Markierung.jpg	Example of a permissible mark
Markierung2.jpg	Example of a permissible mark

Remedy:

Check rear bumper for swirl marks on inside.

If any are found, replace bumper as per the EPC.

Note:

In this case, do not replace the rear radar sensors.

XENTRY TIPS

The source of the fault may be able to be localized by swapping over the sensors from left to right.

Symptoms

Communication/information / Assistance and warning systems / Blind spot assist / Display without obvious cause

Communication/information / Assistance and warning systems / Blind spot assist / Implausible brake application

Operation numbers/damage codes

Op. no.	Operation text	Time	Damage code	Note
			88137 09	

Attachments

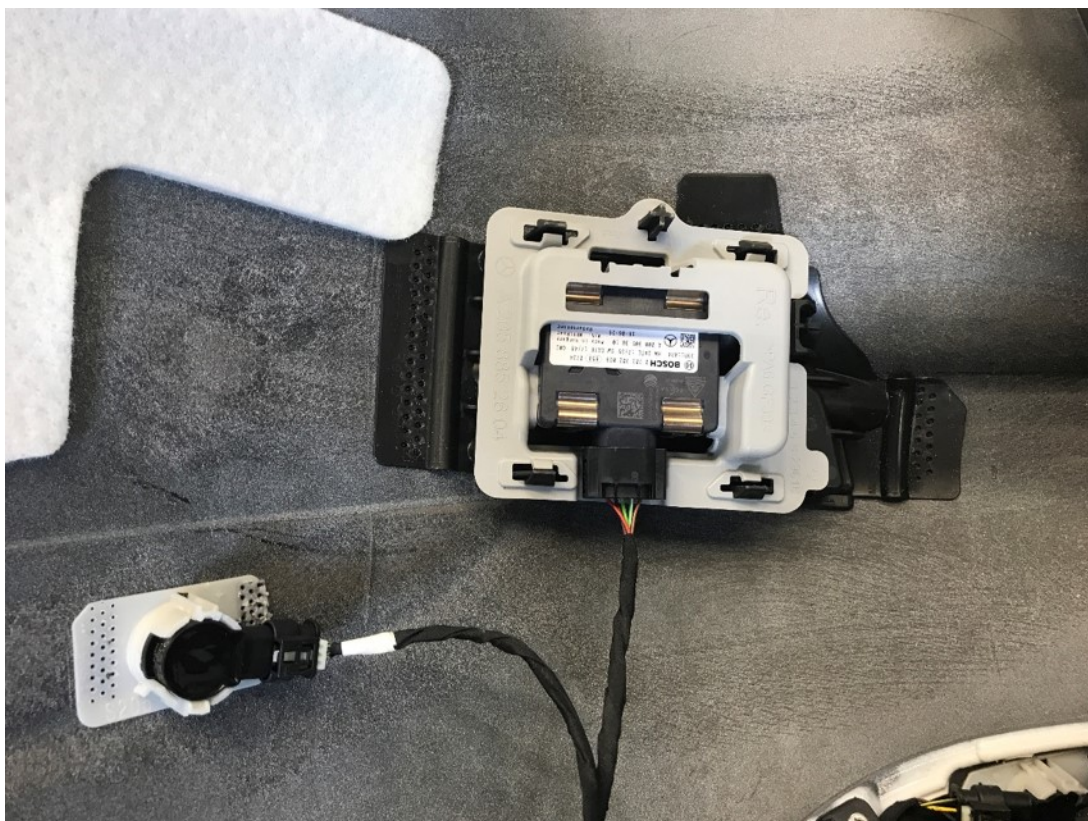
XENTRY TIPS

Sichtfeld Sensor.jpg:



XENTRY TIPS

Sensor montiert.jpg:

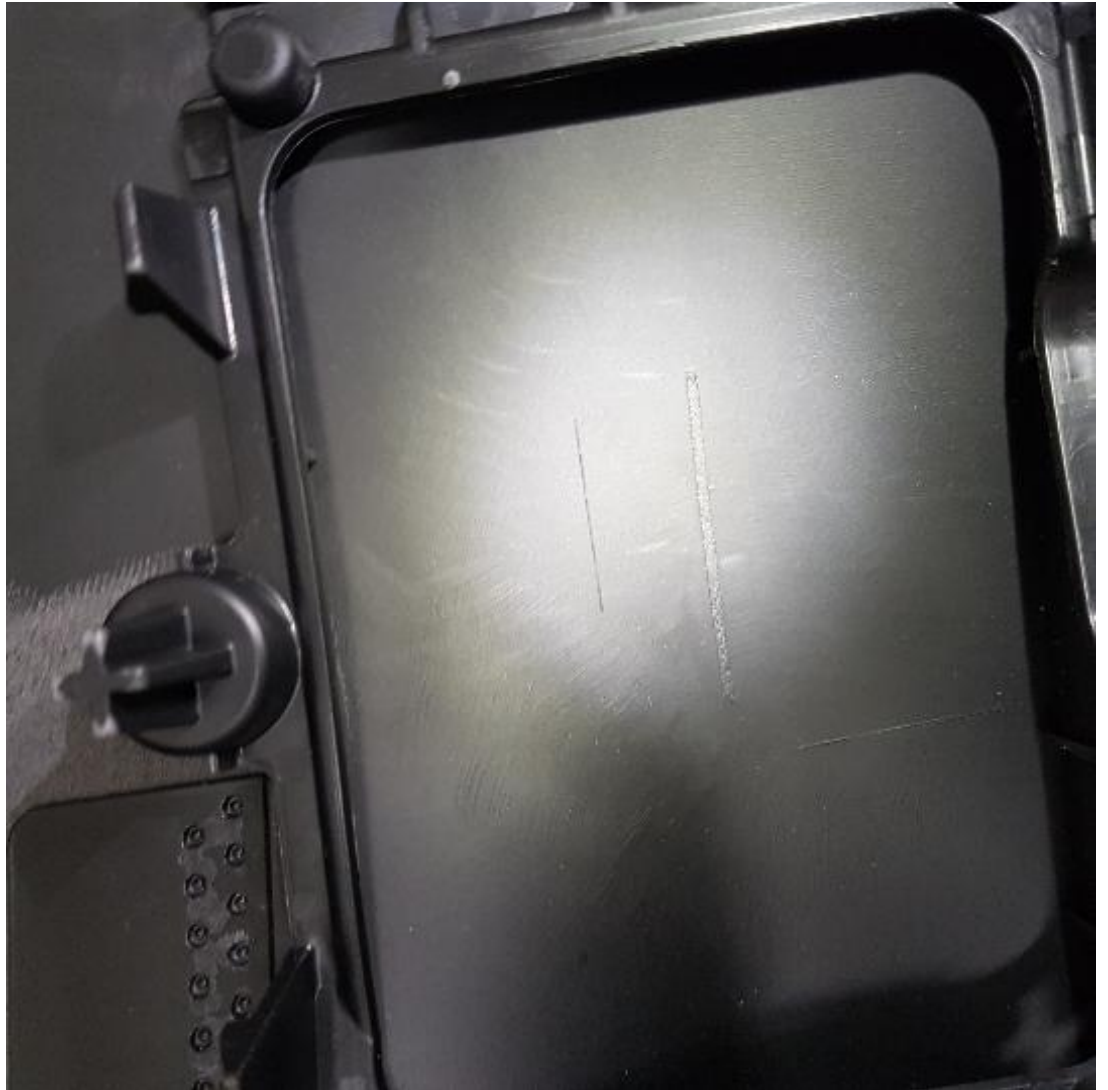


Sensor demontiert.jpg:



XENTRY TIPS

Markierung.jpg:



XENTRY TIPS

Markierung2.jpg:



XENTRY TIPS

Kratzer.JPG:

