


| | | |
|---|----------------------|---|
|  | GROUP ELE | MODEL 2011-2013MY Optima (TF, TF-HEV) |
| | NUMBER 181 | DATE June 2019 |
| TECHNICAL SERVICE BULLETIN | | |
| SUBJECT: TF/TF-HEV HEADLAMP INSPECTION AND/OR REPLACEMENT | | |

This bulletin provides the procedure to inspect and/or replace the headlamp assembly on some 2011-2013 MY Optima (TF, TF-HEV) vehicles produced from August 12, 2010 to December 12, 2013. The internal reflective chrome film in the low beam headlamp housing may deteriorate over time, resulting in gradual dimming of the low beam headlamp(s).

Follow the headlamp assembly inspection and/or replacement outlined in this bulletin to correct this concern.

NOTE: The following are **NOT** covered under this warranty extension/replacement program:

- Headlamp bulbs.
- Aftermarket headlamp assemblies.
- Headlamp lenses that, over time, have become dull, cloudy, and/or fogged due to extended UV exposure, causing the headlamps(s) to appear dim.



Bad Headlamp Assembly Sample Images:

- Reflective chrome debris present inside the housing
- Left headlamp with poor light output/intensity

*** NOTICE**

This TSB is part of Warranty Extension WTY014 for chrome peeling on the reflector inside the headlamp assembly ONLY.

File Under: <Electrical>

Circulate To: General Manager Service Manager Parts Manager
 Service Advisors Technicians Body Shop Manager Fleet Repair

Inspection Procedure:

- 1a. Inspect the RH & LH headlamp assemblies and confirm the headlamp(s) are genuine OEM Kia part by confirming the Kia logo is present on the original part. (May require to wipe with a shop rag to make visible)

Sample: Manufactured by Kia with logo.



- 1b. If the headlamps are genuine assemblies, proceed to step 2. If headlamp(s) is/are NOT a genuine Kia part, the inspection is complete & NO further repairs are necessary.



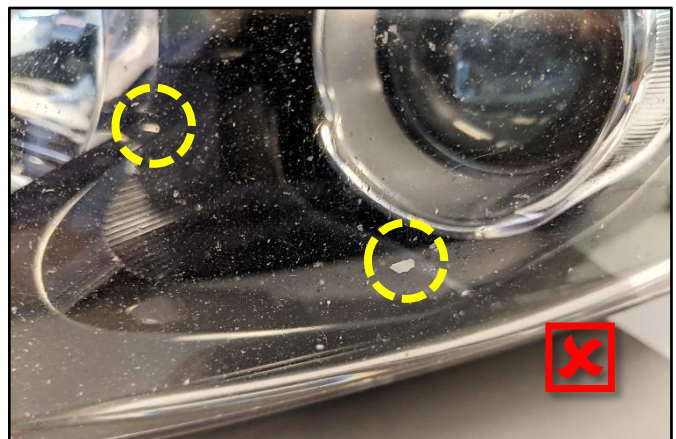
2. Inspect the headlamp(s) for reflective chrome debris inside the housing.

If reflective chrome debris is not present, proceed to “**Headlamp Inspection – Using wall chart or wall**” outlined on page 3.

If reflective chrome debris is present, (as shown) document each RH/LH headlamp in the vehicle with KVID photos (stamping & reflective debris) & proceed to the “**Headlamp(s) Replacement Procedure**” outlined on page 3 of this bulletin.

NOTE: One (1) KVID photo of each headlamp, in the vehicle, is required for warranty replacement:

- A. KIA logo stamping.
B. Reflective chrome debris.



SUBJECT: TF/TF-HEV HEADLAMP INSPECTION AND/OR REPLACEMENT
Headlamp Inspection - Using wall chart or wall:

1. Align the steering wheel straight.
2. Place the vehicle 9.8 feet (3 meters) off the wall to inspect the headlamp light intensity.



- 3a. Turn the low beams ON and block one headlamp to visually check the light intensity of the other headlamp low beam. Repeat this step for the other headlamp.

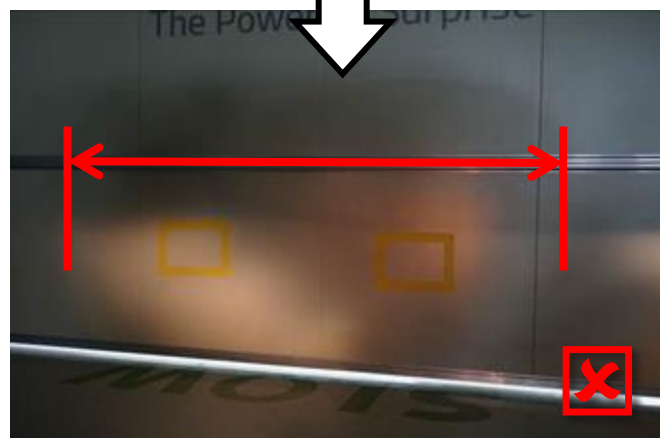
NOTE: One (1) KVID photo of each headlamp, in the vehicle, is required for warranty replacement:

- A. KIA logo stamping.
- B. Headlight pattern on the wall.



- 3b. Replace the headlamp(s) if the light intensity is poor and a non-continuous line (as shown in pictures on the right)

Image note: Left headlamp output is low while right side is covered.


Headlamp(s) Replacement Procedure:



1. Replace headlamp(s) by referring to “body electrical system → lighting device → headlamp → repair procedure” chapters in the applicable workshop manual on KGIS. Ensure to follow “**Head Lamp Aiming Instructions**” on KGIS after replacement.

SUBJECT: TF/TF-HEV HEADLAMP INSPECTION AND/OR REPLACEMENT

AFFECTED VEHICLE RANGE:

| Model | Production Date Range |
|---------------------|--------------------------------------|
| Optima (TF, TF-HEV) | August 12, 2010 to December 12, 2013 |

REQUIRED PART:

| Part Name | Model | Part Number | Figure | Qty. |
|------------------------------|----------|--|---|------|
| Right Side Headlamp Assembly | (TF) | 92102 2T120 92102 2T130 92102 2T121 92102 2T131 |  | 1 |
| | (TF-HEV) | 92102 4U020 92102 4U030 | | |
| Left Side Headlamp Assembly | (TF) | 92101 2T120 92101 2T130 92101 2T121 92101 2T131 |  | 1 |
| | (TF-HEV) | 92101 4U020 92101 4U030 | | |

WARRANTY INFORMATION:

N Code: B19 C Code: ZZ7

| Claim Type | Causal P/N | Qty. | Repair Description | Labor Op Code | Op Time | Replacement P/N | Qty. |
|------------|--------------------------------|------|--|---------------|---------|--|------|
| W | Refer to "Required Part" Table | 0 | Headlamp inspection | 92101F04 | 0.2 M/H | N/A | 0 |
| | | 1 | Headlamp inspection & replacement (one side) | 92101F05 | 0.8 M/H | N/A | 0 |
| | | 1 | Headlamp inspection & replacement (both sides) | 92101F06 | 0.9 M/H | Left and Right Headlamp Assy. Refer to EPC | 1 |

Note: This labor time includes lamp aiming.
*** NOTICE**

All replaced parts will be returned to Kia Warranty Return Center for inspection of chrome peeling on the reflective housing. Any headlamp that does NOT exhibit peeling or a headlamp lens that is discolored due to excessive UV exposure or is NOT a factory OEM with the Kia logo will be charged back to your dealer.