



Date	Group	No.	Release	Page
5.2019	846	001	01	1(6)

Down View Mirror, Repair
AN, GR, PI

PI0886, Down View Mirror, Repair

(May 2019)

Some 2019 vehicles were purposefully shipped to customers without the passenger side down view mirror. This was a proactive measure to prevent damage to the vehicle's door and general safety. To install the new down view mirror to the door, follow the instructions in this document.

Required Parts

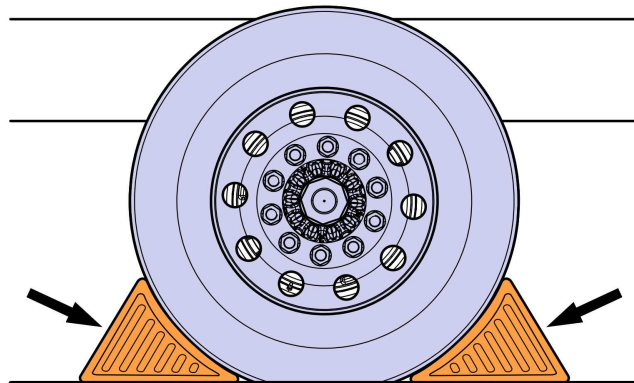
Item	Description	Part Number	Qty
1	Mirror Assembly	78537942	1
2	AVK (Rivet nut)	25160455	3
3	Flange screw	25185871	5

Decommissioning the Truck for Repair

You must read and understand the precautions and guidelines in Service Information, group 30, "General Safety Practices, Electrical" before performing this procedure. If you are not properly trained and certified in this procedure, ask your supervisor for training before you perform it.

NOTE: Information is subject to change without notice. Illustrations are used for reference only and can differ slightly from the actual vehicle being serviced. However, key components addressed in this information are represented as accurately as possible.

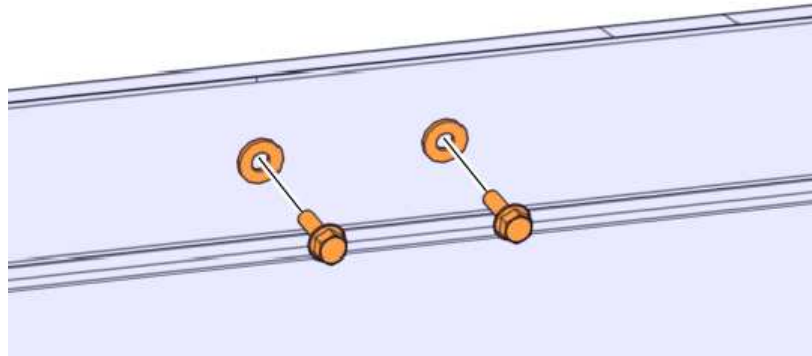
- 1 Park the vehicle on a flat and level surface.
- 2 Apply the parking brake.
- 3 Place the transmission in neutral or park.
- 4 Install the wheel chocks.



W7086748

Down View Mirror, Installation

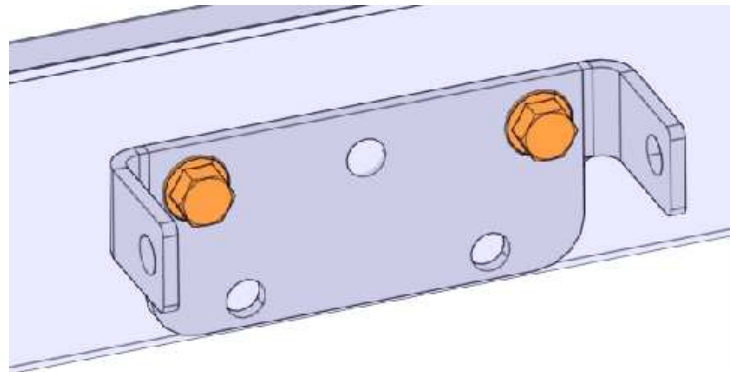
- 1 Remove the bolts from the door.



W8147322

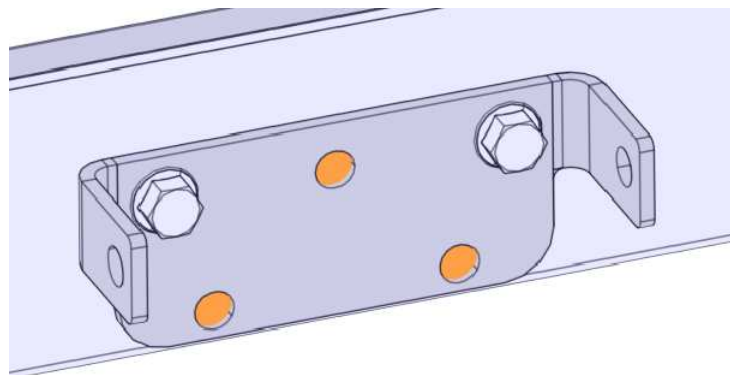
- 2 Install the new mirror assembly (78537942) to be used as a template.

Note: Mirror not shown for clarity.



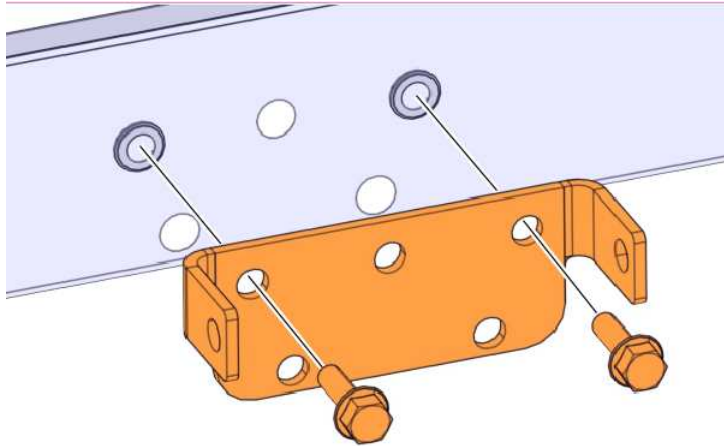
W8147323

- 3 Drill the three new 8 mm holes in the door using the bracket as a guide.



W8147324

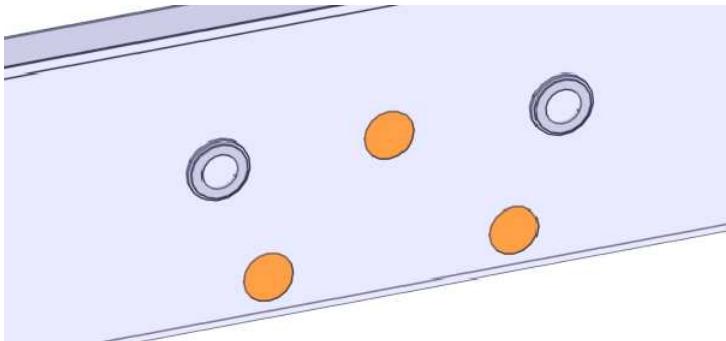
- 4 Remove the mirror and bracket and keep mounting bolts for assembly.



W8147325

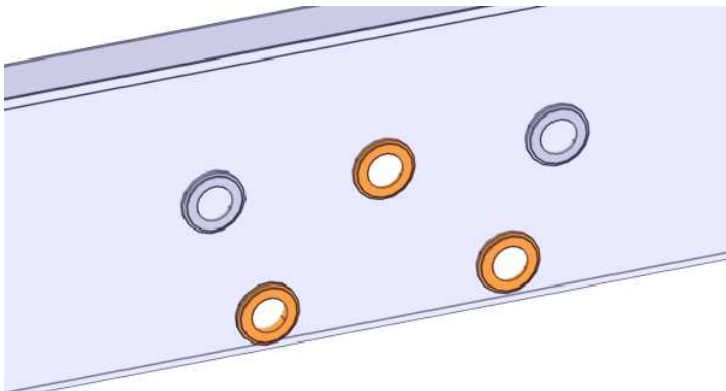
- 5 Enlarge the 8mm holes to 10 mm for installation of the AVKs (rivet nuts).

Note: Use a drill stop set to only penetrate the outer sheet metal.



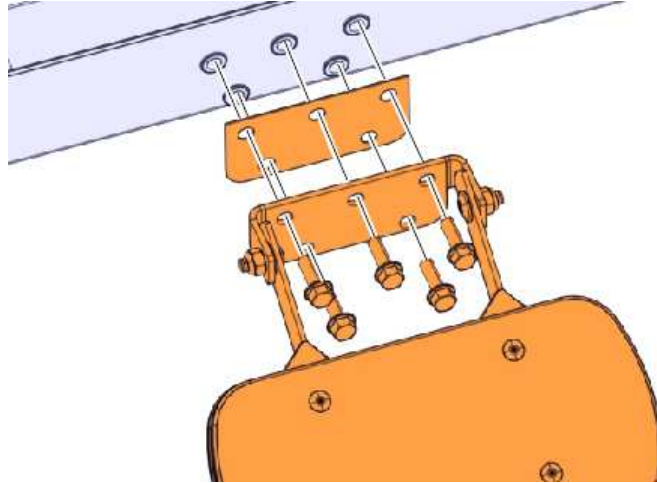
W8147326

- 6 Install the 3 AVKs (rivet nuts 25160455).



W8147327

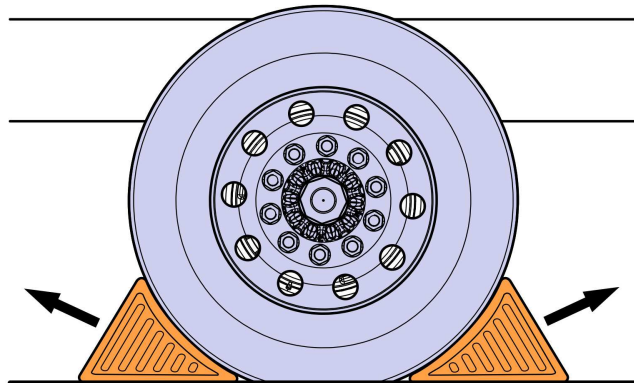
- 7 Install the new mirror assembly with the new gasket (78537810) and five bolts (25185871). Use hand tools to install bolts. Torque the bolts to 8 nm +/- 1.2 nm.



W8147328

Commissioning the Truck for Operation

- 1 Remove the wheel chocks.



W7086759

Reimbursement

This repair is covered by an authorized Service Program. Reimbursement is obtained via the normal claim handling process.	UCHP Reimbursement
Claim Type (used only when uploading from the Dealer Bus. Sys.)	B
Recall Status	
Vehicle inspected, repair not required	
Vehicle repaired per instruction	
Labor Code	
Primary Labor Code (Vehicle Inspection)	1700-06-02-01 0.1hrs
Secondary Labor Code (Down View Mirror, Repair)	8461-16-09-01 0.4hrs
Causal Part	82717494
SCC Code	S7374
Authorization Number	NA
Expiration Date	May 31, 2020