

MODEL: Karma Revero

DATE: June 2019

TITLE: Floor Mat Removal/Installation Procedure

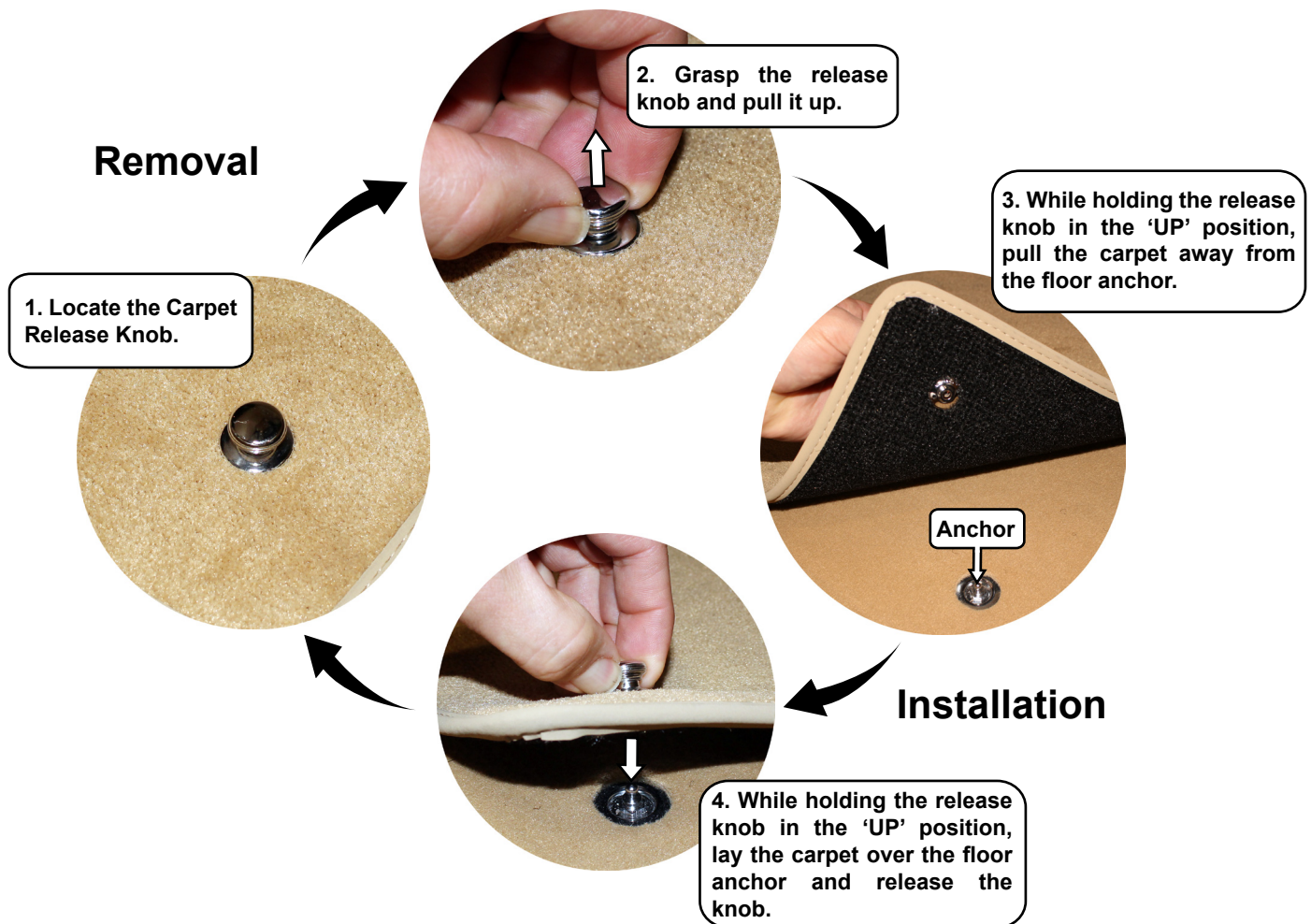
Released- June 2019

PRIORITY: All

APPLICABILITY: Karma Revero (All)

MARKET REGION: North America

PURPOSE: To illustrate how to properly remove or install the vehicle floor mats.



Karma Automotive Bulletins and service documents are intended for use by experienced and trained Technicians. If you lack the skills, tools, equipment and a suitable workshop for any procedure described in this document, we suggest you leave such repairs to a Karma retailer and service provider. See your service provider for advice on whether your vehicle may benefit from the information contained within this document. The information contained in the Karma Bulletin is accurate at the date of publication. However, Karma Automotive regularly updates technical information. Please check with your Karma Automotive Retailer and Karma Automotive service provider that the bulletin you intend to use contains the latest available information.