

Squeak Noise From Rear Suspension

Service Category Suspension

Section Rear Suspension

Market USA

Lexus Supports
ASE Certification 

Applicability

YEAR(S)	MODEL(S)	ADDITIONAL INFORMATION
2016 - 2019	RX350, RX450H	

Introduction

Some 2016 – 2019 model year RX350 and RX450h vehicles may exhibit a squeak noise from the rear suspension. This condition may be more noticeable in colder ambient temperatures and may occur when traveling over uneven roads or when the vehicle comes to a complete stop. Follow the Repair Procedure in this bulletin to address this condition.

Warranty Information

OP CODE	DESCRIPTION	TIME	OFF	T1	T2
SU1806	R & R Rear Trailing Arm Assembly (One Side)	1.0	48760-0E051	91	99
Combo A	Opposite Side	0.2	48760-48061 48780-0E061		
Combo B	Rear Toe-in Adjustment	0.2	48780-48091		

APPLICABLE WARRANTY

- This repair is covered under the Lexus Basic Warranty. This warranty is in effect for 48 months or 50,000 miles, whichever occurs first, from the vehicle's in-service date.
- Warranty application is limited to occurrence of the specified condition described in this bulletin.

Parts Information

PART NUMBER		PART NAME	QTY
PREVIOUS	NEW		
48760-0E051 48760-48061	48760-0E070	Arm Assy, Trailing, RR RH	1
48780-0E061 48780-48091	48780-0E080	Arm Assy Trailing, RR LH	1

Squeak Noise From Rear Suspension

Required Tools & Equipment

REQUIRED EQUIPMENT	SUPPLIER	PART NUMBER	QTY
ChassisEAR™ (or Equivalent)	ADE	JSPSM06606 (JS Products)	1

NOTE

- A mechanic's stethoscope or similar tool may be used in place of ChassisEAR™.
- ChassisEAR™ may be ordered by calling Approved Dealer Equipment (ADE) at 1-800-368-6787.

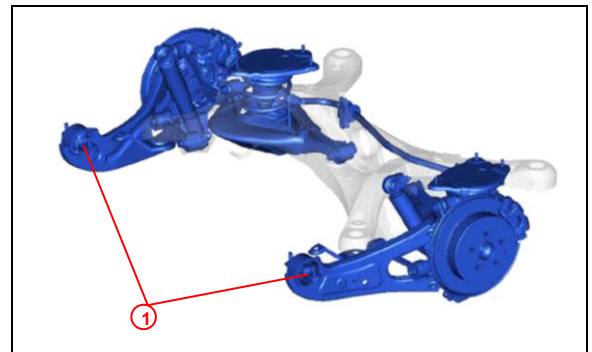
Repair Procedure

1. Confirm the condition exists.
Using ChassisEAR™ (or equivalent), test-drive the vehicle over an uneven road surface, such as a sloped driveway, to verify the condition is coming from the rear trailing arm bushings.

HINT

Applying soapy water to the suspected bushing may temporarily diminish the noise intensity and help identify the source of the noise.

Figure 1.



1	Rear Trailing Arm Bushing
----------	----------------------------------

Is a squeak noise present?

- **YES** — Continue to step 2.
- **NO** — This bulletin does NOT apply. Continue diagnosis using the applicable Repair Manual.

Squeak Noise From Rear Suspension

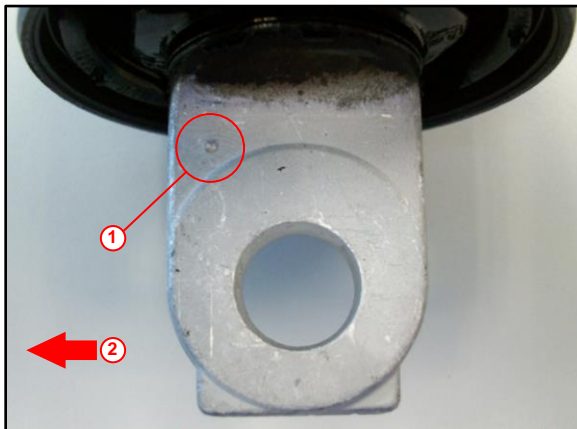
Repair Procedure (continued)

- BEFORE installing NEW parts, confirm the identification mark as shown. If this mark is NOT present, the part is incorrect and should NOT be installed.

NOTE

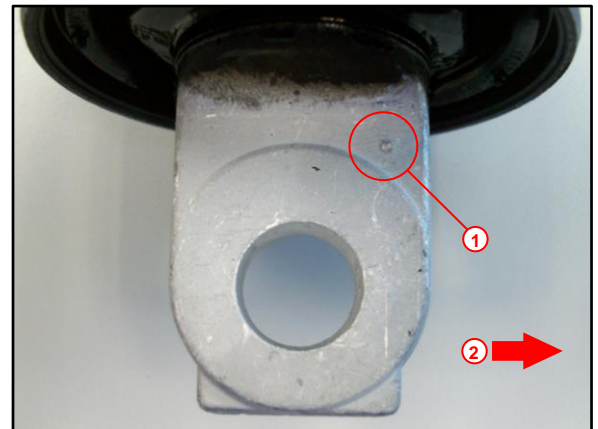
The identification mark on the NEW part faces the outside of the vehicle.

Figure 2. LH Side



1	Identification Mark
2	Front

Figure 3. RH Side



1	Identification Mark
2	Front

- Replace BOTH rear trailing arm assemblies even if only one side is emitting the squeak noise.

Refer to TIS, applicable model and model year Repair Manual:

- 2016 RX350:
Suspension – Rear Suspension – “Rear Suspension: Rear Trailing Arm: [Removal / Installation](#)”
- 2017 – 2019 RX350:
Suspension – Rear Suspension – “Rear Suspension: Rear Trailing Arm: [Removal / Installation](#)”
- 2016 RX450h:
Suspension – Rear Suspension – “Rear Suspension: Rear Trailing Arm: [Removal / Installation](#)”
- 2017 – 2019 RX450h:
Suspension – Rear Suspension – “Rear Suspension: Rear Trailing Arm: [Removal / Installation](#)”

- Test-drive the vehicle to verify the squeak noise is no longer present.