

LTB01030NAS5



TECHNICAL BULLETIN

21 MAY 2019

© Jaguar Land Rover North America, LLC

NOTE: The information in Technical Bulletins is intended for use by trained, professional Technicians with the knowledge, tools, and equipment required to do the job properly and safely. It informs these Technicians of conditions that may occur on some vehicles, or provides information that could assist in proper vehicle service. The procedures should not be performed by 'do-it-yourselfers'. If you are not a Retailer, do not assume that a condition described affects your vehicle. Contact an authorized Land Rover service facility to determine whether this bulletin applies to a specific vehicle.

SECTION:

205-04

SUBJECT/CONCERN:

Squeak/Rubbing Noise From Front Right of Vehicle While Driving

AFFECTED VEHICLE RANGE:

MODEL:	MODEL YEAR:	VIN:	ASSEMBLY PLANT:
Discovery Sport (LC)	2015 Onwards	000001 Onwards	Halewood
Range Rover Evoque (LV)	2012-2019	000001-999999	Halewood

MARKETS:

NORTH AMERICA

CONDITION SUMMARY:

SITUATION:

A squeak and/or rubbing noise from the front right of the vehicle while driving may be evident.

CAUSE:

This may be caused by reduced clamping load on the front right halfshaft bearing outer race due to incorrect assembly or components which are not to specification.

ACTION:

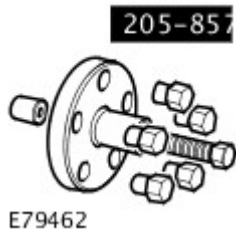
Should a Customer express this concern, follow the procedure(s) below.

PARTS:

PART NUMBER	DESCRIPTION	QUANTITY
LR077915	Front bearing retainer	1
BYH500040	Nut(s) - Front bearing retainer	2
LR097852	Halfshaft bracket - Ingenium I4 2.0L Petrol	1
LR105649	Halfshaft bracket - GTDi 2.0L Petrol	1
LR061603	Front right halfshaft - GTDi 2.0L Petrol	1
LR117134	Front right halfshaft - Ingenium I4 2.0L Petrol	1
LR112408	Front right halfshaft - Automatic transmission	1
FX110056	Nut(s) - Stabilizer	1
LR024151	Nut(s) - Halfshaft retaining	1
LR001192	Bolt(s) - GTDi 2.0L Petrol/Ingenium I4 2.0L Petrol	6
LR001192	Bolt(s) - GTDi 2.0L Petrol	3
FT110356	Bolt(s) - GTDi 2.0L Petrol	3
LR024762	Bolt(s) - GTDi 2.0L Petrol	1
LR003773	Bolt(s)/stud(s) - GTDi 2.0L Petrol/Ingenium I4 2.0L Petrol	1
FX110046	Nut(s)	1
LR024747	Bolt(s) - Lower arm - Heavy duty suspension	1
LR024506	Bolt(s) - Lower arm - Standard suspension	1

PART NUMBER	DESCRIPTION	QUANTITY
LR033244	Nut(s) - Lower arm - Heavy duty suspension	1
FY112056	Nut(s) - Lower arm - Standard suspension	1
LR000093	Bolt(s) - M14 x 40mm - Brake caliper - 2012-14MY	1
LR058339	Bolt(s) - M12 x 42mm - Brake caliper - 2014-18MY	1
LR019727	Oil - Power Transfer Unit (PTU) - Vehicles without Active Driveline	1
LR052059	Oil - Power Transfer Unit (PTU) - Vehicles with Active Driveline	1

TOOLS:



205-857

Remover,
Halfshaft



205-872

Installer, Transfer
Case Seal



303-1300

Remover,
Crankshaft Seal



307-595

Installer,
Intermediate Shaft
Seal

WARRANTY:

△ NOTES:

- Repair procedures are under constant review, and therefore times are subject to change; those quoted here must be taken as guidance only. Use TOPIx to obtain the latest repair time.
- The JLR claims submission system requires the use of causal part numbers. Labor only claims must show the causal part number with a quantity of zero.

DESCRIPTION	SRO	TIME (HOURS)	CONDITION CODE	CAUSAL PART
Halfshaft Bearing Retainer - Front Right - Inspect and Renew - Discovery Sport (L550)	47.10.89.30	0.3	7	LR077915
Halfshaft Bearing Retainer - Front Right - Inspect and Renew - Range Rover Evoque (L538)	47.10.89.30	0.3	7	LR077915
Shaft With Both Joints - RH - Renew - Discovery Sport (L550; GTDi 2.0L Petrol)	47.10.02	0.6	7	LR077915
Shaft With Both Joints - RH - Renew - Discovery Sport (L550; Ingenium I4 2.0L Petrol)	47.10.02	0.5	7	LR077915
Shaft With Both Joints - RH - Renew - Range Rover Evoque (L538)	47.10.02	0.5	7	LR077915

NOTE:

Normal Warranty procedures apply.

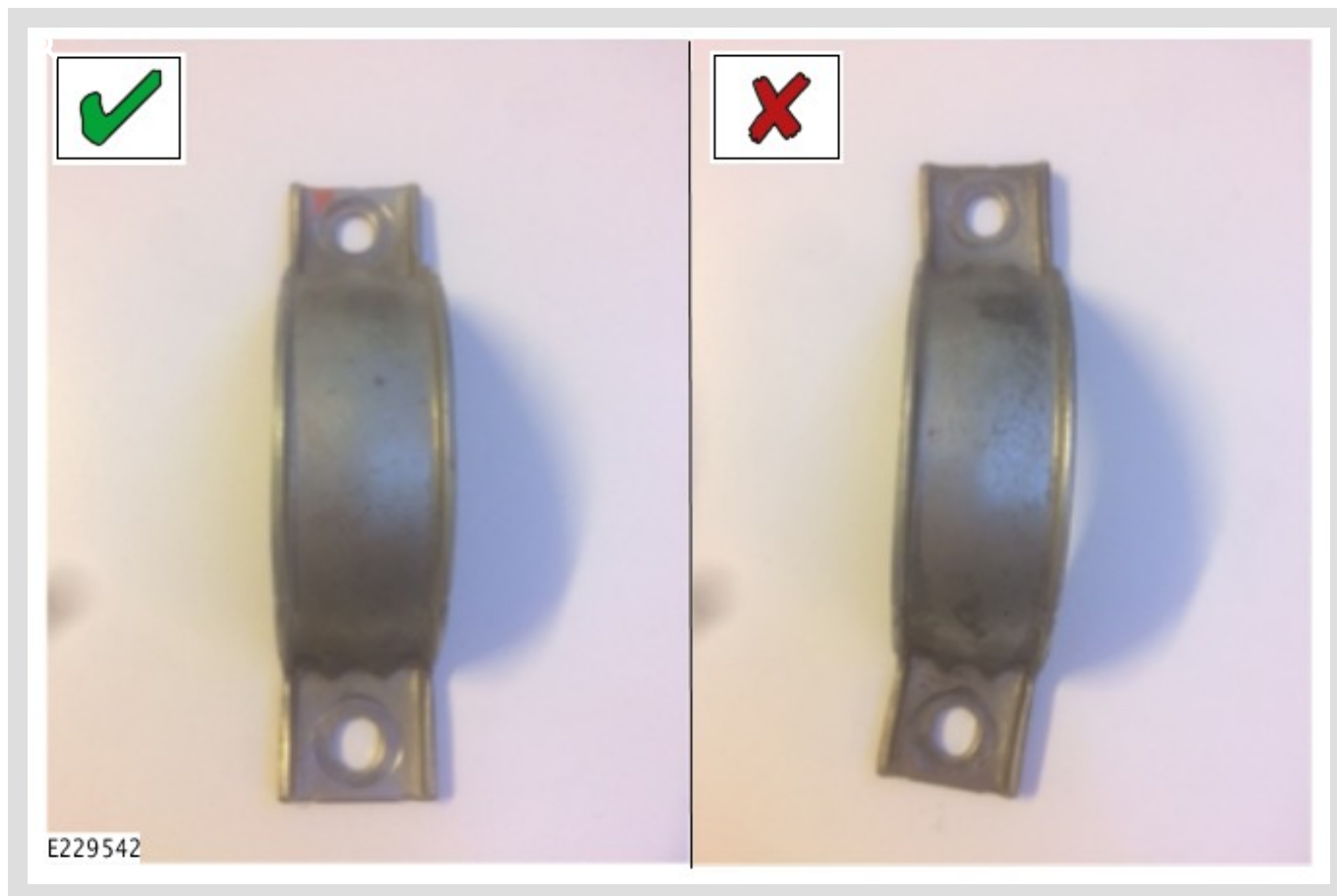
WORKSHOP PROCEDURE:

1

WARNING:

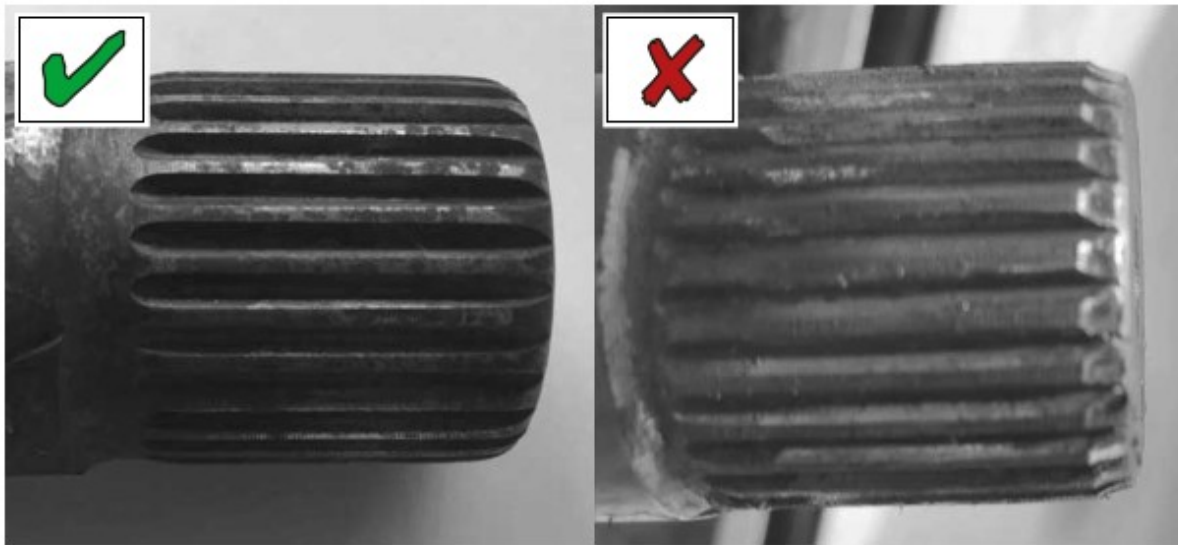
Make sure to support the vehicle with axle stands.

Raise and support the vehicle (see TOPIx Workshop Manual section 100-02: General Information - Service Information - Jacking and Lifting).



Perform initial inspection:

- 1 Visually inspect the halfshaft bearing cap for signs of distortion or damage (X).
- 2 Visually inspect the front right halfshaft bearing for metallic particles around the bearing cap and bearing assembly.
- 3 Rotate the front right wheel and visually inspect the front right half shaft outer bearing race for rotation when rotating the road wheel.
- 4 Rotate the front right wheel to inspect for harshness and/or a squeak or rubbing noise from the halfshaft bearing to confirm this is the cause of the Customer concern.
 - If all of the above concerns are not evident, do not continue with this Technical Bulletin Workshop Procedure.
 - If any of the above concerns are identified, go to Step 3.



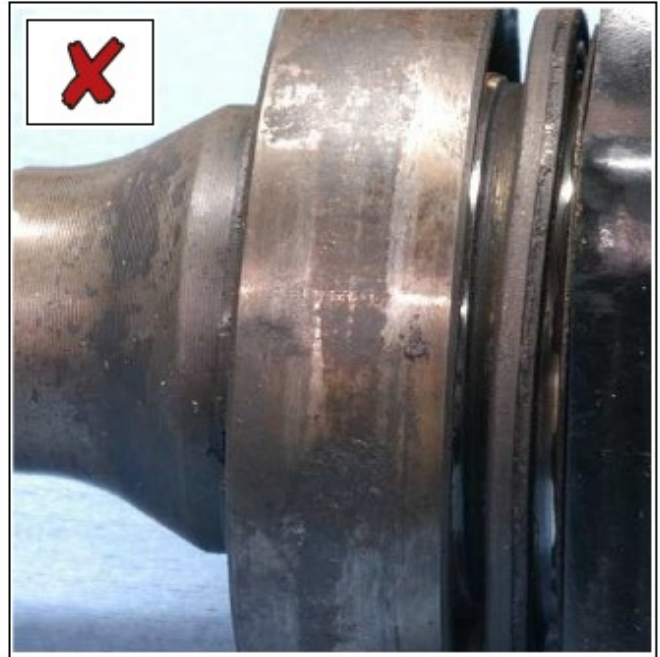
E229544

Remove the front right halfshaft for inspection (see TOPIx Workshop Manual section 205-04: Driveline - Front Drive Halfshafts - Removal and Installation).

- 1 If the splines are damaged (X), go to Step 5.
- 2 If the splines are not damaged (✓), go to Step 4.

△ NOTE:

Slight scoring to the outer race of the bearing (✓) is acceptable.

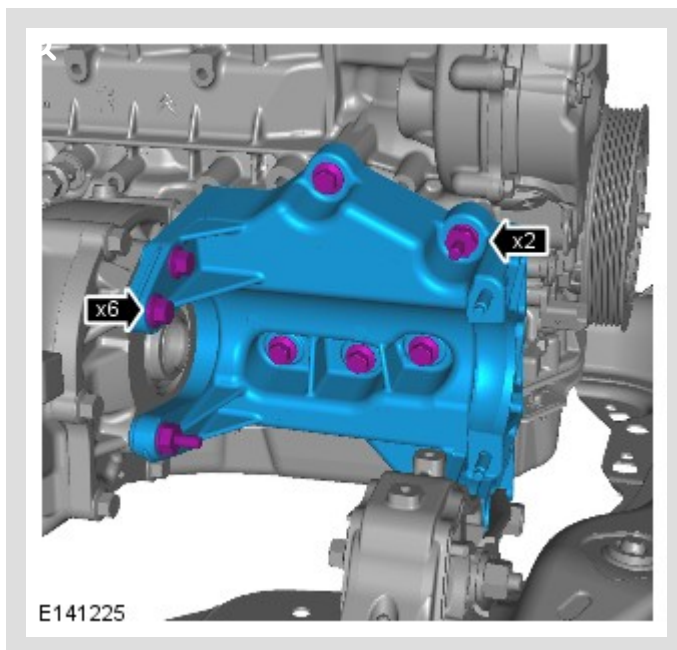


E202643

Visually inspect the condition of the halfshaft bearing and bearing housing.

- If bearing rotation is not harsh or noisy and the bearing is not badly scored (✓), go to Step 7.
- If bearing rotation is harsh or noisy and/or the bearing is badly scored (X), go to Step 5.

5



Renew the bearing housing.

- 1 Torque: see TOPIx Workshop Manual section 205-04: Driveline - Front Drive Halfshafts - Specification

6

△ NOTES:

- A NEW bearing retainer and captive washer nut(s) MUST be used when installing the new halfshaft.
- Do not renew the halfshaft and bearing unless bearing rotation is harsh and/or noisy, the outer bearing seals are damaged/displaced, and/or the halfshaft splines are damaged.

Install a new front right halfshaft and bearing cap (see TOPIx Workshop Manual section 205-04: Driveline - Front Drive Halfshafts - Front Halfshaft RH).

7

Install the front right wheel (see TOPIx Workshop Manual section 204-04: Suspension - Wheels and Tires - Removal and Installation).

8

Lower the vehicle.