



# SERVICE BULLETIN


|                             |                         |                       |
|-----------------------------|-------------------------|-----------------------|
| Classification:<br>EL19-011 | Reference:<br>NTB19-042 | Date:<br>May 22, 2019 |
|-----------------------------|-------------------------|-----------------------|

## AEB WARNING LIGHT BLINKING

- APPLIED VEHICLES:**
- |                        |                               |
|------------------------|-------------------------------|
| 2019 Altima (L34)      | 2015-2019 Murano (Z52)        |
| 2016-2019 Maxima (A36) | 2016 Murano Hybrid (Z52)      |
| 2018-2019 LEAF (ZE1)   | 2015-2019 Rogue (T32)         |
| 2017-2019 Armada (Y62) | 2016-2018 Rogue Hybrid (T32H) |
|                        | 2017-2019 Rogue Sport (J11)   |

**APPLIED SYSTEMS:** Vehicles equipped with a lane camera (see Figure 1)

### SERVICE INFORMATION

If the AEB warning light  is blinking (but not illuminated steadily) or the customer states it is blinking, and there are no related DTCs, inspect the windshield.

A blinking AEB warning light may occur under the following conditions:

- When contamination or foreign material adhere to the lane camera viewing window on the windshield
- When driving while it is snowing or when frost forms on the lane camera viewing window on the windshield
- When the lane camera viewing window on the windshield is temporarily fogged up

### NOTE:

- If DTCs are present in any of the following related systems:

- Laser/Radar,
- ICC/ADAS, or
- Lane Camera,

Refer to the related Electronic Service Manual (ESM) for diagnosis.

- Refer to the following pages for further information.

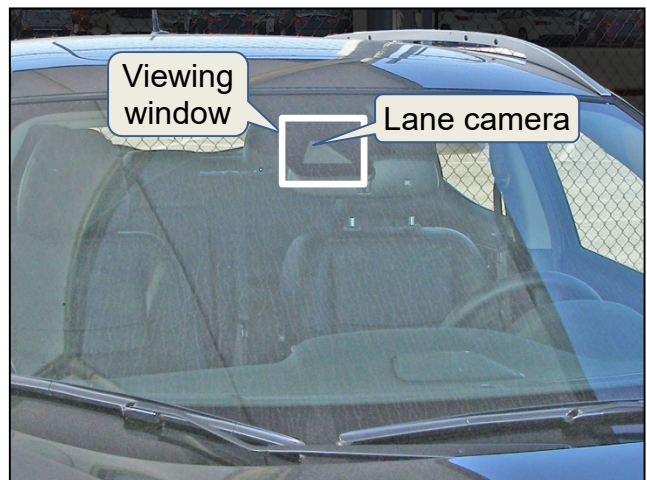
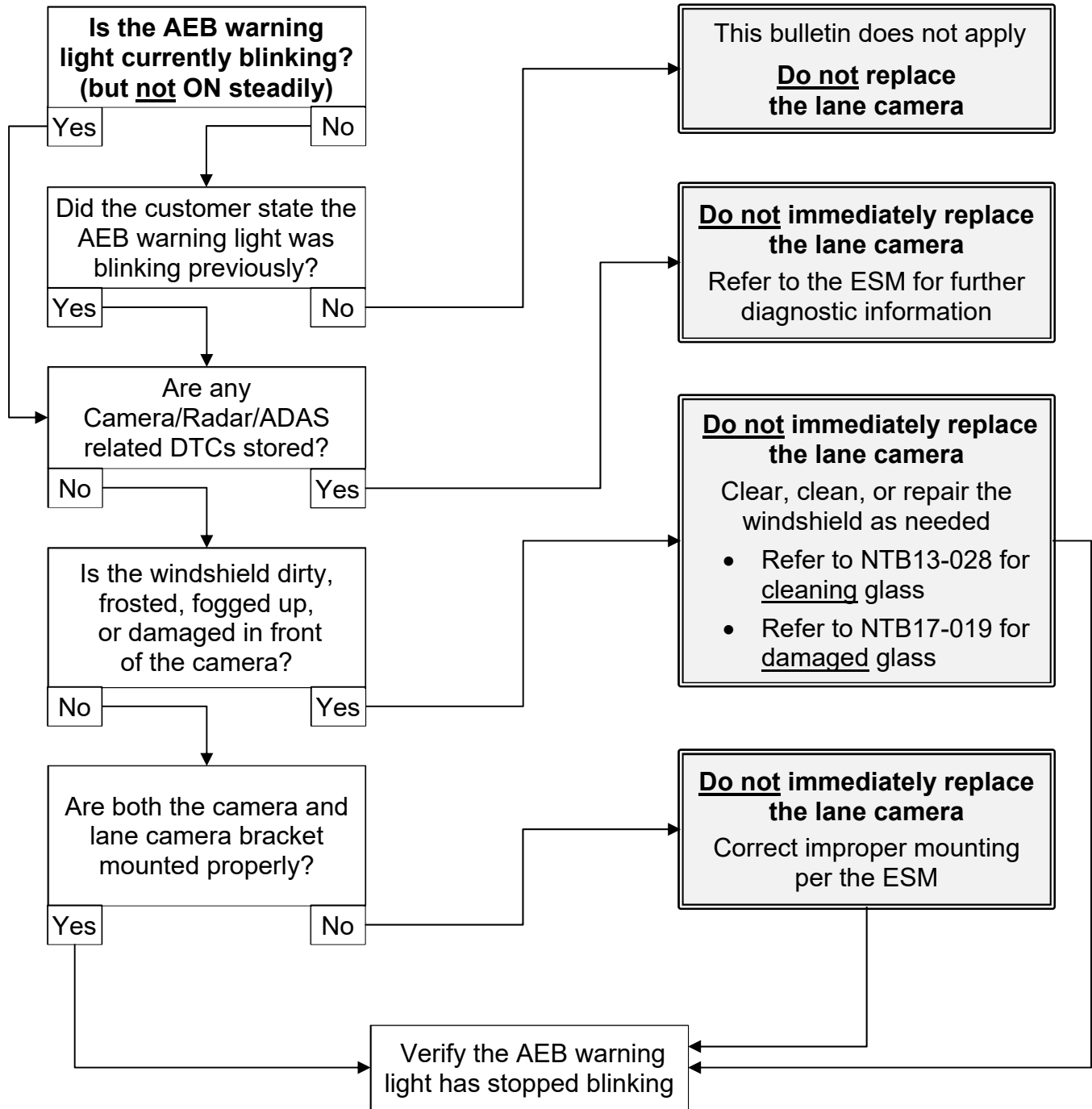


Figure 1

Nissan Bulletins are intended for use by qualified technicians, not 'do-it-yourselfers'. Qualified technicians are properly trained individuals who have the equipment, tools, safety instruction, and know-how to do a job properly and safely. **NOTE:** If you believe that a described condition may apply to a particular vehicle, DO NOT assume that it does. See your Nissan dealer to determine if this applies to your vehicle.

# FLOW CHART



Inform the customer the following conditions may cause the AEB warning light to blink:

- When contamination or foreign material adhere to the lane camera viewing window on the windshield
- When driving while it is snowing or when frost forms on the lane camera viewing window on the windshield
- When the lane camera viewing window on the windshield is temporarily fogged up

Explain to the customer the difference between contamination detection and a malfunction

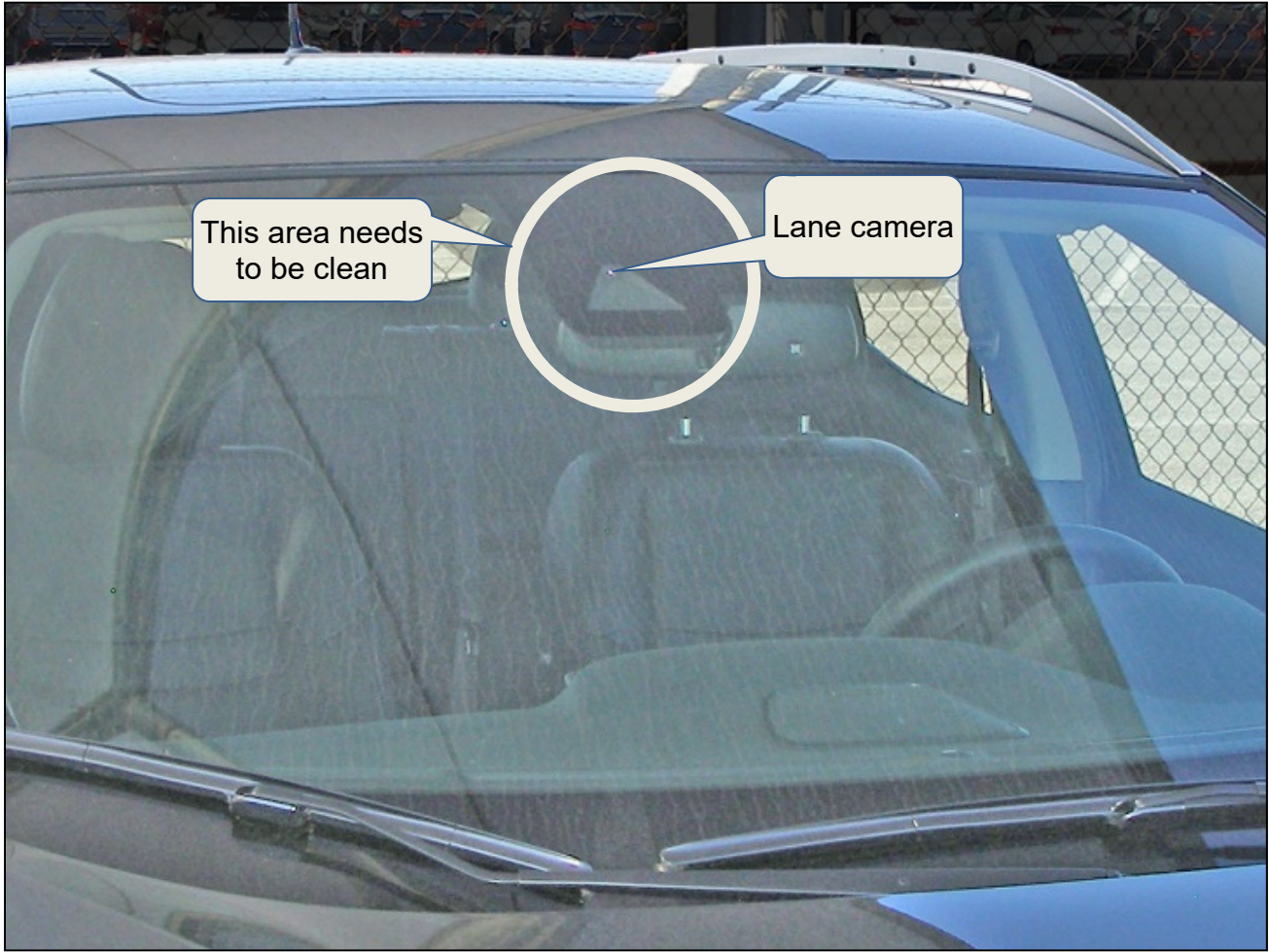


Figure 2

**AMENDMENT HISTORY**

| <b>PUBLISHED DATE</b> | <b>REFERENCE</b> | <b>DESCRIPTION</b>          |
|-----------------------|------------------|-----------------------------|
| May 22, 2019          | NTB19-042        | Original bulletin published |