

Classification:

Reference:

 COPYRIGHT© NISSAN NORTH AMERICA, INC.  
 Date:

EL19-012

ITB19-013


May 22, 2019

## AEB WARNING LIGHT BLINKING

**APPLIED VEHICLES:** 2015-2019 Q50 (V37)                      2019 QX50 (J55)  
 2015-2018 Q50 Hybrid (HV37)                      2015-2019 QX60 (L50)  
 2015-2019 Q70 (Y51)                      2015-2019 QX60 Hybrid (L50H)  
 2015-2018 Q70 Hybrid (HY51)                      2015-2019 QX80 (Z62)

**APPLIED SYSTEMS:** Vehicles equipped with a lane camera (see Figure 1)

### SERVICE INFORMATION

If the AEB warning light  is blinking (but not illuminated steadily) or the customer states it is blinking, and there are no related DTCs, inspect the windshield.

A blinking AEB warning light may occur under the following conditions:

- When contamination or foreign material adhere to the lane camera viewing window on the windshield
- When driving while it is snowing or when frost forms on the lane camera viewing window on the windshield
- When the lane camera viewing window on the windshield is temporarily fogged up

#### NOTE:

- If DTCs are present in any of the following related systems:

- Laser/Radar,
- ICC/ADAS, or
- Lane Camera,

Refer to the related Electronic Service Manual (ESM) for diagnosis.

- Refer to the following pages for further information.

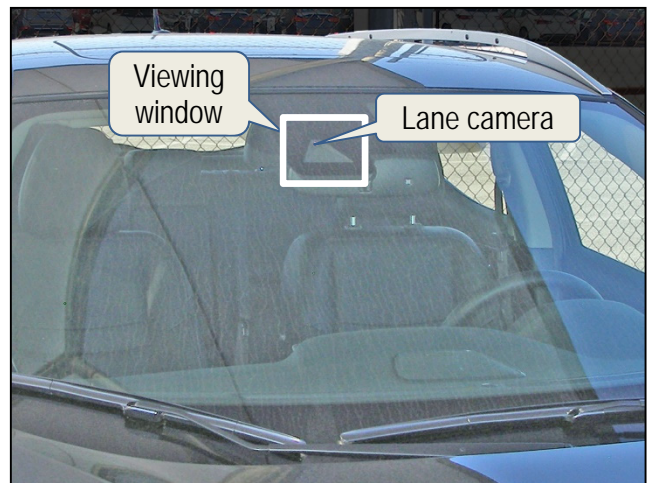
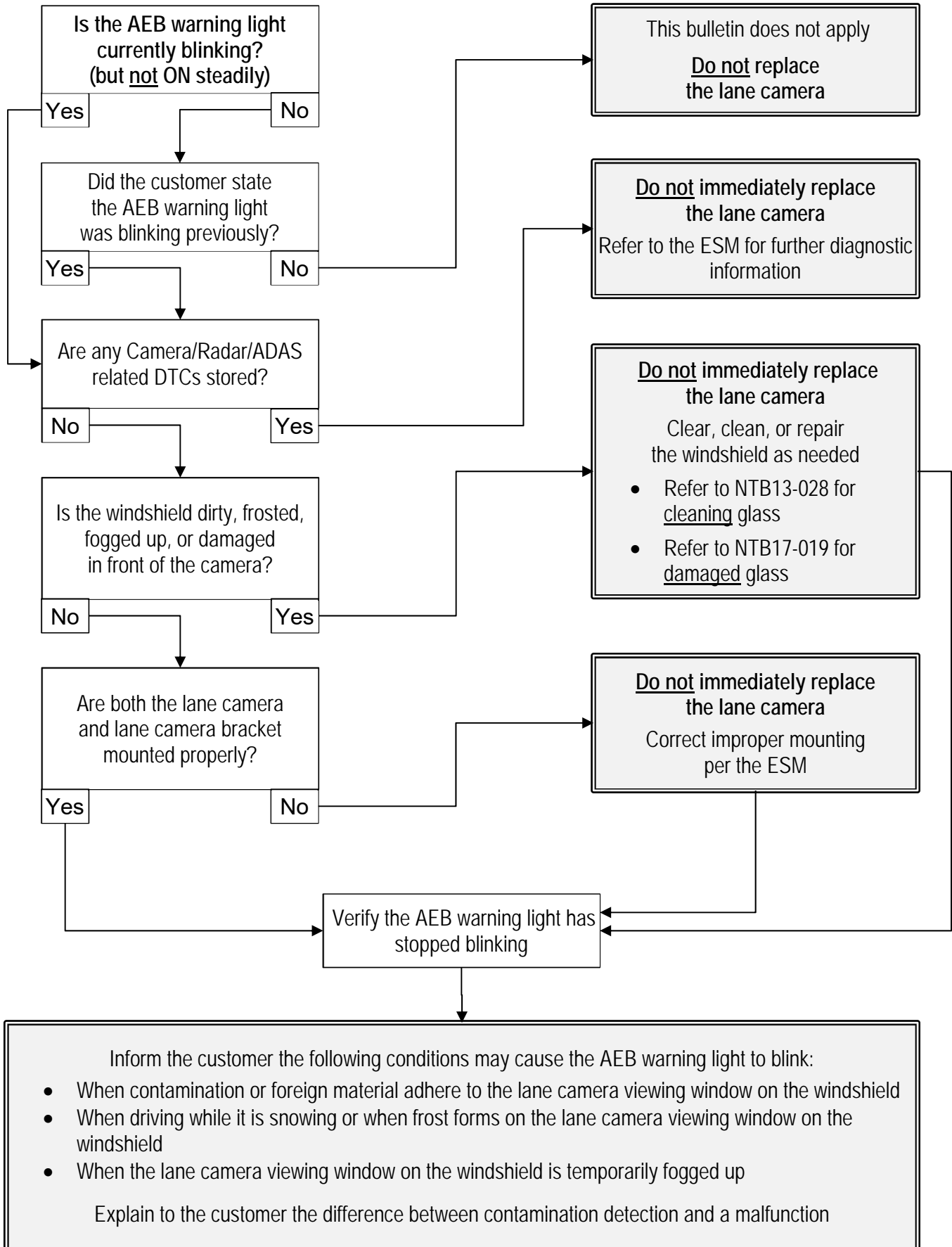


Figure 1

Infiniti Bulletins are intended for use by qualified technicians, not 'do-it-yourselfers'. Qualified technicians are properly trained individuals who have the equipment, tools, safety instruction, and know-how to do a job properly and safely. **NOTE:** If you believe that a described condition may apply to a particular vehicle, DO NOT assume that it does. See your Infiniti retailer to determine if this applies to your vehicle.

FLOW CHART



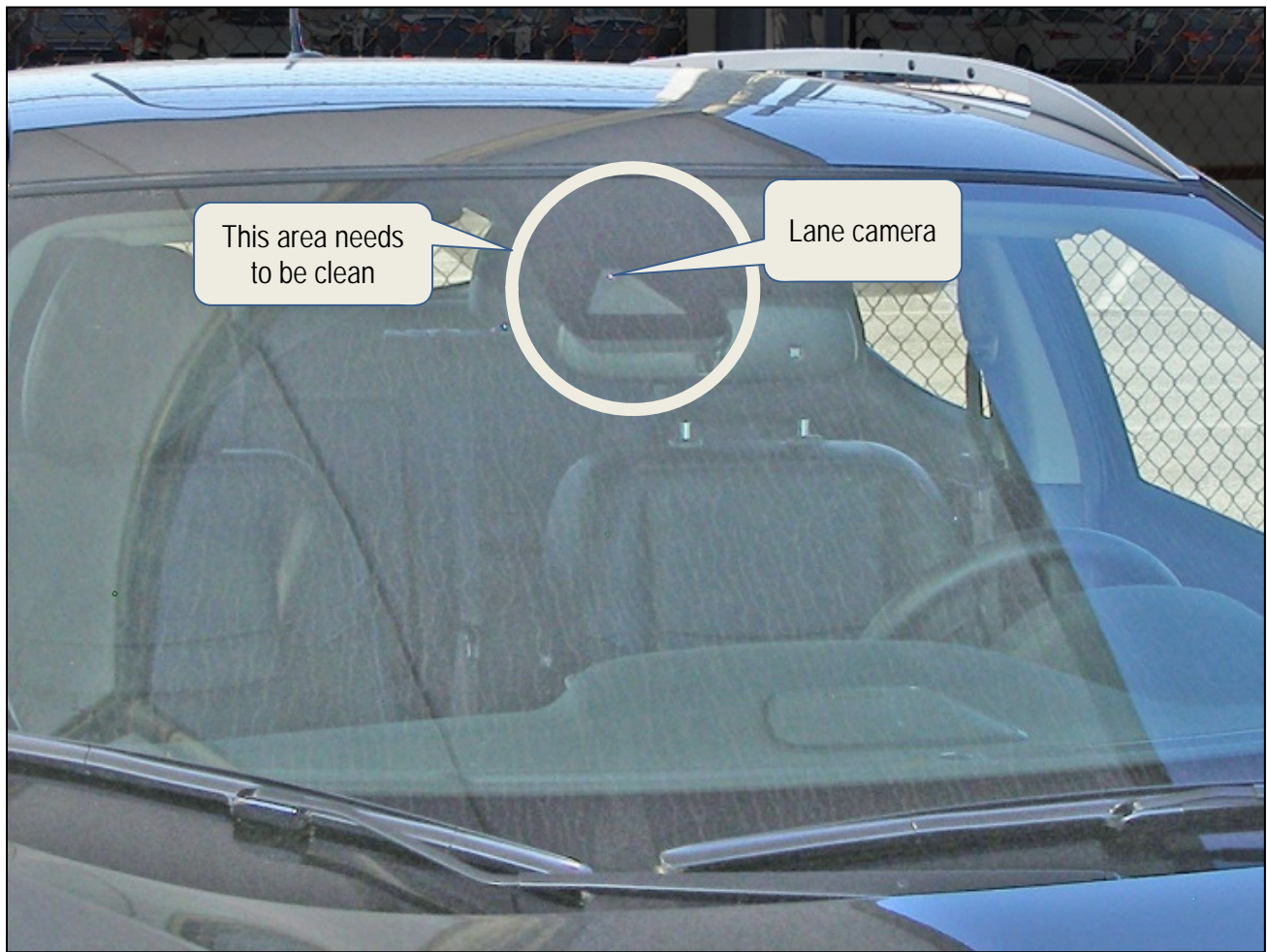


Figure 2

**AMENDMENT HISTORY**

PUBLISHED DATE	REFERENCE	DESCRIPTION
May 22, 2019	ITB19-013	Original bulletin published