



Technical Service Department Technical Service Operations

TECHNICAL INFORMATION

| Bulletin # | Date | Page |
|------------|------------|------|
| MAS001850 | 06/05/2019 | 1/11 |

MODELLI: M161 Levante

OGGETTO: Diagnostic guide for sealing the body due water infiltration.

GENERAL OVERVIEW

If water leaks occurs inside the passenger compartment or if the engine compartment is to be sealed due to malfunction of electrical components due to water contamination, it will be necessary to follow the information of this document. This document contains both a preliminary diagnostic guide (A.1) and the operating instructions for sealing 3 areas of the vehicle (A.2).

The process has been improved in Plant from March 2019-VIN 330204. All the vehicles produced after this date will not be subject to water infiltration due to sealing anomalies in the panels.

INDEX

A. OPERATING PROCEDURE

A.1. Visual Check

- A.1.1. Engine Bulkhead – Adhesive cap
- A.1.2. Engine wiring harness grommet on bulkhead
- A.1.3. HVAC aperture
- A.1.4. Seal on anti-pollen filter
- A.1.5. Sunroof drain pipe

A.2. Sealing

- A.2.1. Windscreen lower cross member
- A.2.2. A-Pillar
- A.2.3. H Node

B. OTHER POINTS

C. WARRANTY CLAIM



Technical Service Department Technical Service Operations

| Bulletin # | Date | Page |
|------------|------------|------|
| MAS001850 | 06/05/2019 | 2/11 |

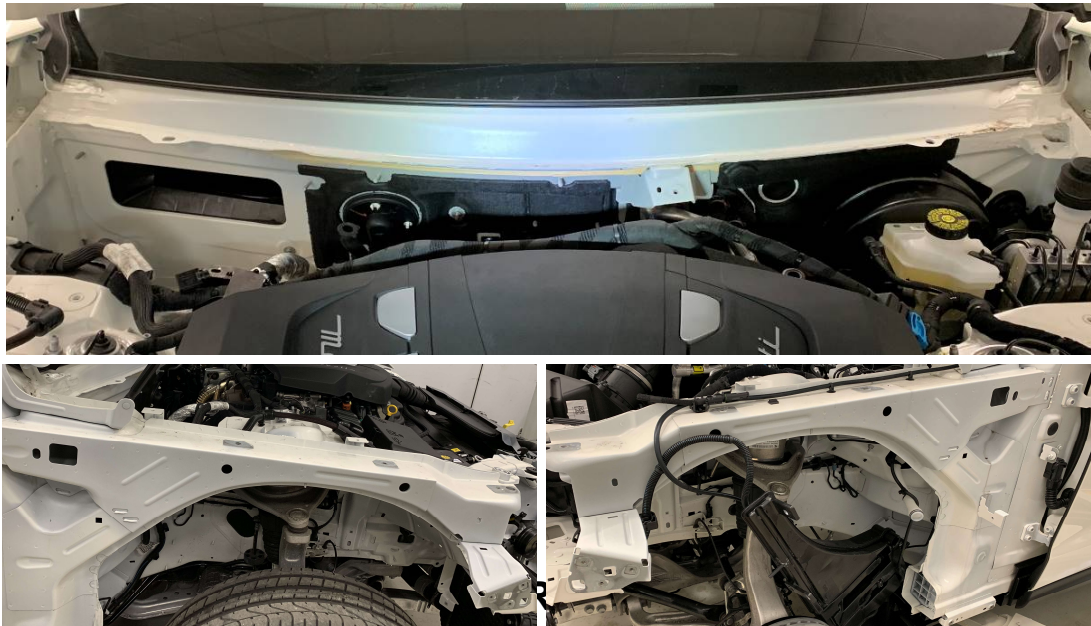
OPERATING PROCEDURE

The procedure includes preliminary checks (Cap A.1) and sealing operations (Cap A.2). To carry out the operations described here, it will be necessary to remove both mudguards and the water containment tank under the windshield. After the Visual Check (Cap A.1), perform the following disassembly procedures, in the order described here.

| Procedure | Description |
|----------------------------------|---|
| 1 9.15.016 | WINDSCREEN WATER CONTAINMENT BAY Removal and refitting |
| MUDGUARD | |
| 8.30.001.2 - 8.30.002.1 | HEADLIGHT LH and RH Removal and refitting |
| 8.00.010 | WINDSCREEN WASHER FLUID RESERVOIR Removal and refitting |
| 2 9.15.047.0 - 9.15.048.0 | FRONT MUDGUARD AIR OUTLET OPENING Removal and refitting |
| 9.13.071.0 - 9.13.072.0 | FRONT GUARD FOR FRONT RH LH WHEELHOUSE Removal and refitting |
| 9.00.002.0 - 9.00.003.0 | FRONT MUDGUARD RH LH Removal and refitting |
| 8.30.001.4 | HEADLIGHT SET-UP Operation |

**Please refer to the workshop manual (Tech Doc) for technical details about these operations.*

Once the following components have been removed, as shown in the following images, all areas to be sealed will be accessible.





Technical Service Department Technical Service Operations

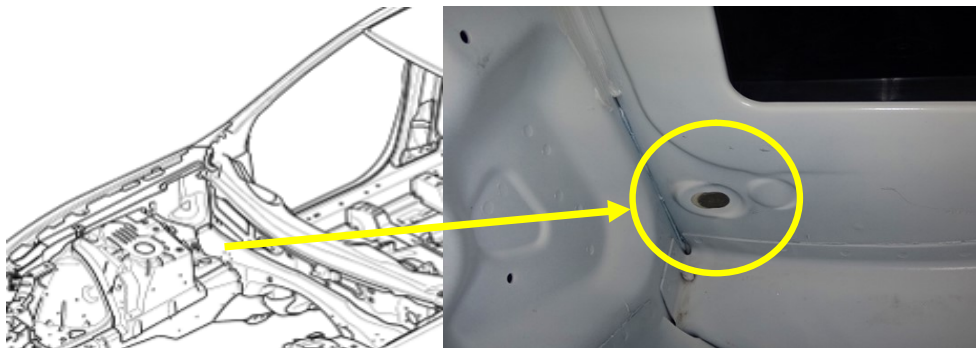
| Bulletin # | Date | Page |
|------------|------------|------|
| MAS001850 | 06/05/2019 | 3/11 |

A.1. PRELIMINARY CHECKS

First of all, perform these checks to be sure that the root cause of the infiltration has been not caused by some trouble around components showed in A1.1, A1.2, A1.3, A1.4. If the root cause of infiltration will be discovered performing the Checks at chapter A.1, please open BOL report.

A.1.1. Engine bulkhead - Adhesive cap

- Is the adhesive cap missing?
- Is the adhesive cap damaged?
- Is the adhesive cap not in correct position?
- Are present two adhesive caps (internal side and external side)?



ACTION: If one of these tests will be KO tests, it will be necessary to seal the opening.

INFO: Introduced double adhesive cap on the right side: date 27/07/2016.

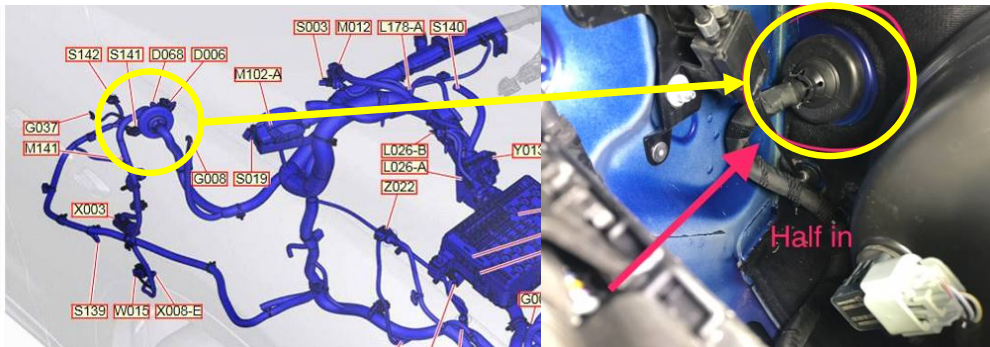


Technical Service Department Technical Service Operations

| Bulletin # | Date | Page |
|------------|------------|------|
| MAS001850 | 06/05/2019 | 4/11 |

A.1.2. Engine wiring harness grommet on bulkhead

- The grommet has been detected to be out of its seat



ACTION: If the check is KO, it will be necessary to reposition the grommet. If necessary, also proceed to seal the area.

INFO: Introduced a specific test in plant from 15/03/2017.



Technical Service Department Technical Service Operations

| Bulletin # | Date | Page |
|------------|------------|------|
| MAS001850 | 06/05/2019 | 5/11 |

A.1.3. HVAC Aperture

- Is the seal of heater box damaged in section? There is a Gap?



ACTION: If the check is KO, it will be necessary to replace the seal.

INFO: Specific Check introduced in plant to verify correct seal coupling during assembly from 22/03/2018 (chassis 302155): Yellow dot added to trace certified parts.



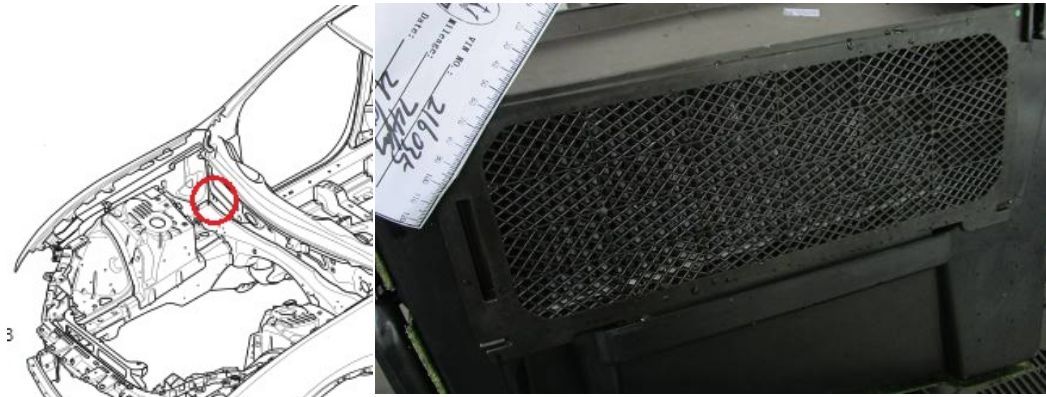


Technical Service Department Technical Service Operations

| Bulletin # | Date | Page |
|------------|------------|------|
| MAS001850 | 06/05/2019 | 6/11 |

A.1.4. Seal on anti-pollen filter.

- Is present seal on anti-pollen filter?

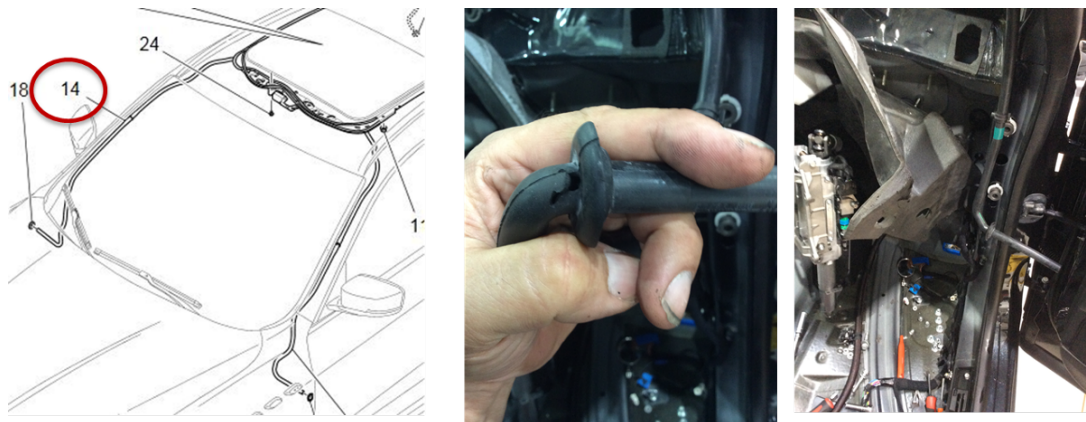


ACTION: If the check is KO, it will be necessary to fit a new seal.

INFO: Introduced a specific test in plant from Feb 17.

A.1.5. Sunroof drain pipes

- Is drainpipe split and /or detached?



ACTION: If the check is KO, it will be necessary to fit again the pipe or replace if damaged.

INFO: Specific check (RH side and water drain pipes): date 13/02/2017



Technical Service Department Technical Service Operations

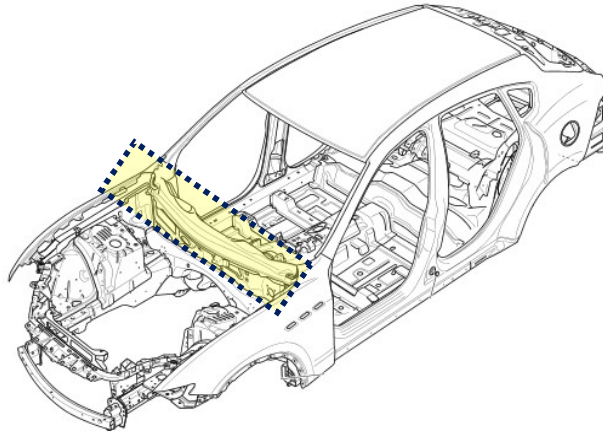
| Bulletin # | Date | Page |
|------------|------------|------|
| MAS001850 | 06/05/2019 | 7/11 |

A.2. SEALING

PAY ATTENTION: All the areas described in points 2.1 - 2.2 - 2.3 of this document must be carefully sealed.

A.2.1. WINDSCREEN LOWER CROSS MEMBER:

Once the components have been removed, it will be necessary to carefully seal all the highlighted areas:



**PAY ATTENTION. Refer to 09.AA – 1 section in TECH DOC for information about Sealent and Consumables. This section shows the sealants and consumables in the car. Both the sealants and consumables used in OEM and the compatible products available in EMEA, NAFTA and APAC markets are indicated to carry out repairs.*

⚠ Before using any product, read carefully the safety datasheet supplied by manufacturer. Health prescriptions may be subject to updates.

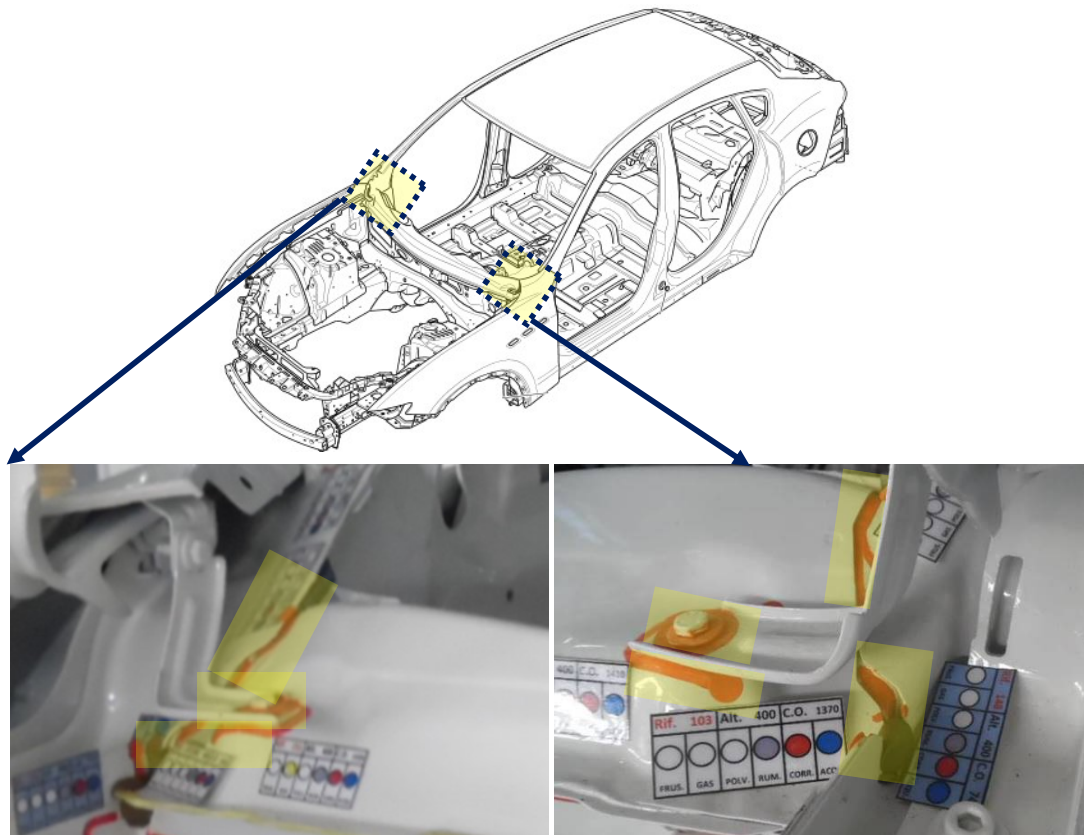


Technical Service Department Technical Service Operations

| Bulletin # | Date | Page |
|------------|------------|------|
| MAS001850 | 06/05/2019 | 8/11 |

A.2.2. A PILLAR

Once the components have been removed, it will be necessary to carefully seal all the highlighted areas. Carefully seal the junction between the sheets and near the screws.



**PAY ATTENTION. Refer to 09.AA – 1 section in TECH DOC for information about Sealant and Consumables. This section shows the sealants and consumables in the car. Both the sealants and consumables used in OEM and the compatible products available in EMEA, NAFTA and APAC markets are indicated to carry out repairs.*

⚠ Before using any product, read carefully the safety datasheet supplied by manufacturer. Health prescriptions may be subject to updates.

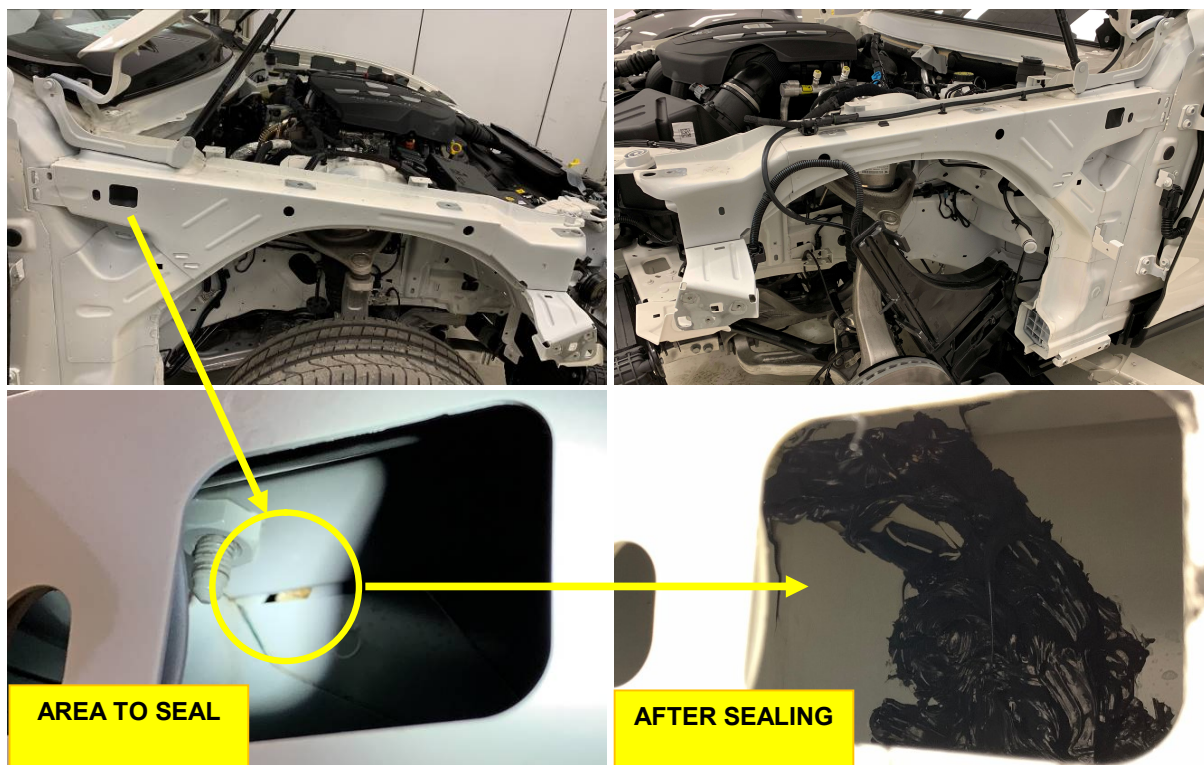


Technical Service Department Technical Service Operations

| Bulletin # | Date | Page |
|------------|------------|------|
| MAS001850 | 06/05/2019 | 9/11 |

A.2.3. FENDER JUNCTION- H NODE

Once the components have been removed, it will be necessary to carefully seal all the highlighted areas. Use a nozzle long enough for the application.



**PAY ATTENTION. Refer to 09.AA – 1 section in TECH DOC for information about Sealent and Consumables. This section shows the sealants and consumables in the car. Both the sealants and consumables used in OEM and the compatible products available in EMEA, NAFTA and APAC markets are indicated to carry out repairs.*

⚠ Before using any product, read carefully the safety datasheet supplied by manufacturer. Health prescriptions may be subject to updates.

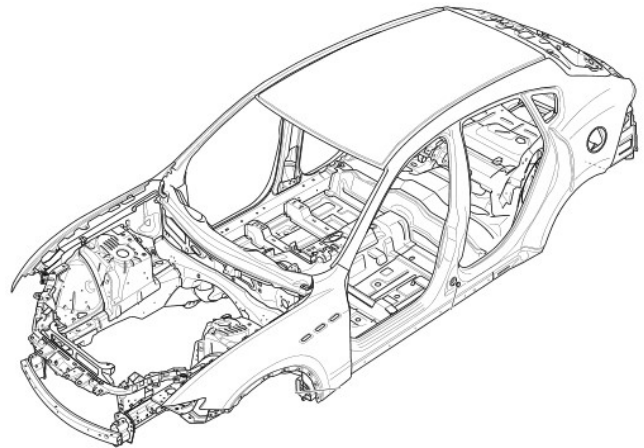
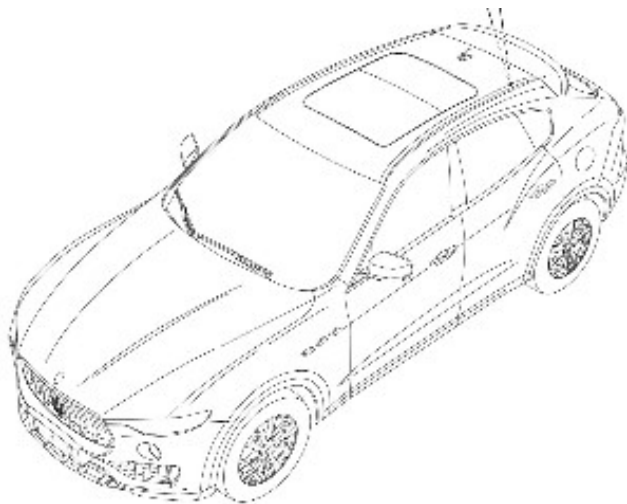


Technical Service Department Technical Service Operations

| Bulletin # | Date | Page |
|------------|------------|-------|
| MAS001850 | 06/05/2019 | 10/11 |

B. OTHER AREAS

If you find water infiltration came from other areas respect as described in this document, please open a BOL Report. Use the diagram below to mark the area contaminated by water and/or the root cause. Please attach pictures in high resolution to the report.





Technical Service Department Technical Service Operations

| Bulletin # | Date | Page |
|------------|------------|-------|
| MAS001850 | 06/05/2019 | 11/11 |

C. WARRANTY CLAIM

CASE 1: If the root cause of infiltration will be discovered performing the Checks at chapter A.1, please open BOL report.

CASE 2: If it is necessary to perform the sealing as described in Chapter A.2, use the following times in the service Entry.

| | Procedure | Description | Tempo |
|---|------------|-----------------------------|-------|
| 1 | 9.03.066.9 | REMOVAL/ REFITTING/ SEALING | 5.2h |

| | | Description | Euro |
|---|-----------|-------------------------|---------|
| 1 | 980101011 | CONSUMABLES AND SEALING | 30,00 € |

**Use this code to cover all the expenses for consumables and sealing you should provide by yourself following 09.AA in Tech DOC*

We remind you that our ABMs are available for any questions or support, and we kindly ask your full cooperation in complying with the above mentioned indications.

Thank you for your attention.

Best regards

Technical Service Operations
Gionathan Lunetta