

# Progress Rail

*A Caterpillar Company*

www.progressrail.com

---

## SERVICE BULLETIN MAINTENANCE OF WAY EQUIPMENT

---

**DATE:** 02/18/19

**BULLETIN NO:** 0505

**TITLE:** Boom cradle visibility modification.

**RATING:**

<input type="checkbox"/>	<b>ALERT</b> (Potential Problem)	<input type="checkbox"/>	<b>INFORMATION</b> (Action Is Optional)
<input checked="" type="checkbox"/>	<b>DIRECTIVE</b> (Action Is Required)	<input type="checkbox"/>	<b>PRODUCT IMPROVEMENT</b> (Enhance Product)

**PRODUCT SERIES / MODEL:** 75HRT SkyTrim

**SERIAL NO:** 75HRT-101-2015, 75HRT-102-2016, 75HRT-103-2016, 75HRT-104-2017, 75HRT-105-2018

**SUMMARY:** On the machines listed above, boom cradles must be modified to improve visibility and to install horizontal restraints for service personnel safety. Also a Final Stage manufacturer label is required to be installed on all machines listed.

**OPERATIONAL IMPACT:** Service must be performed to enhance safety.

**ACTION:** Add horizontal restraints, reinforce the platform, and move the boom rest from impeding the operator's line of sight.

**CONTACT:** For questions or assistance with this matter, please contact the Progress Rail-Kershaw Service Department at +1 (866) 537-7429.

## Safety Information



**FOLLOW APPLICABLE LOCK OUT / TAG OUT PROCEDURES FOUND IN YOUR OPERATORS MANUAL TO ISOLATE MACHINE FROM ENERGY SOURCE. FAILURE TO COMPLY COULD RESULT IN SEVERE BODILY INJURY.**

### Detailed Instructions:

#### Prepare machine for service.

1. Park the machine on level ground and apply the parking brake.
2. Rotate the boom a minimum of 20 degrees to either side to access the working area unobstructed.

#### Lock out/Tag out:

1. Follow machine lock out/tag out procedures highlighted in your operator's manual including turning the engine off and securing the battery disconnect switch/switches.
2. **WARNING! Prior to welding, disconnect engine control module connectors. Failing to complete this step may result in ECM damage and failure!**

#### Modifying the cab platform:

**Follow all instructions as listed on PRS drawing 842250 KIT REBUILD, 75HRT NHTSA. A brief description of work is as follows:**

1. Match drill 9/16" holes and install mounting plates and anchors to the top of the platform for safety lanyards. **(See Figure 2.1, 2.2, 2.3)**
2. Remove the boom rests and grind the mount flush with the bottom of the platform on the front and rear. Remove the strobe and strobe mount in the front. **(See Figure 3.1, 3.2)**
3. Install the boom rest mount plates to the platform. **(See Figure 4.1)**
4. Install rubber boom rests on the front and rear of the platform. **(See Figure 4.2)**
5. Reinforce the rear platform on both sides. **(See Figure 5.1, 5.2, 5.3, 5.4)**
6. Paint all welded surfaces to original finish.
7. Apply labels as shown in Figures **6.1, 6.2, 6.3**
8. Add Label, final stage manufacturer to the interior of the door. **(See Figure 6.4)**
9. Once all work is complete, reconnect the ECM connectors and start the machine.

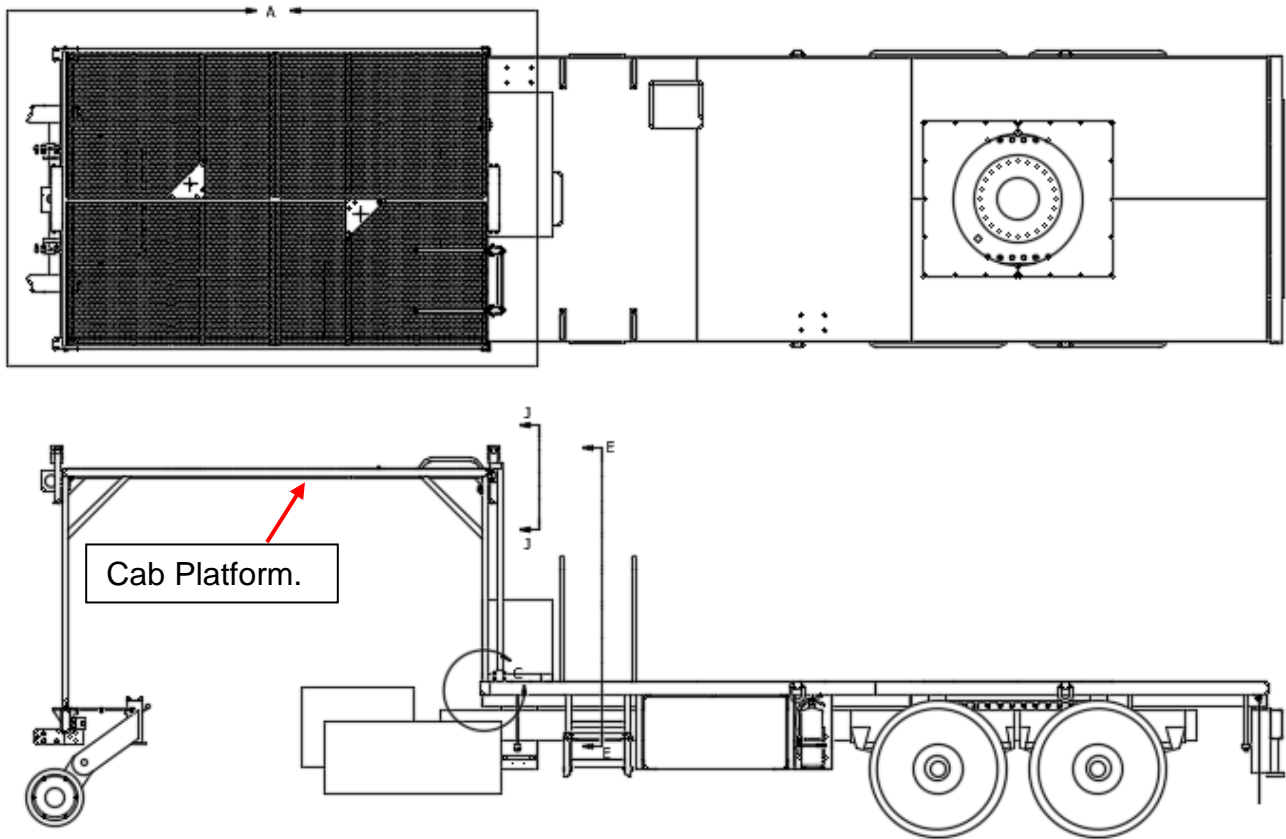
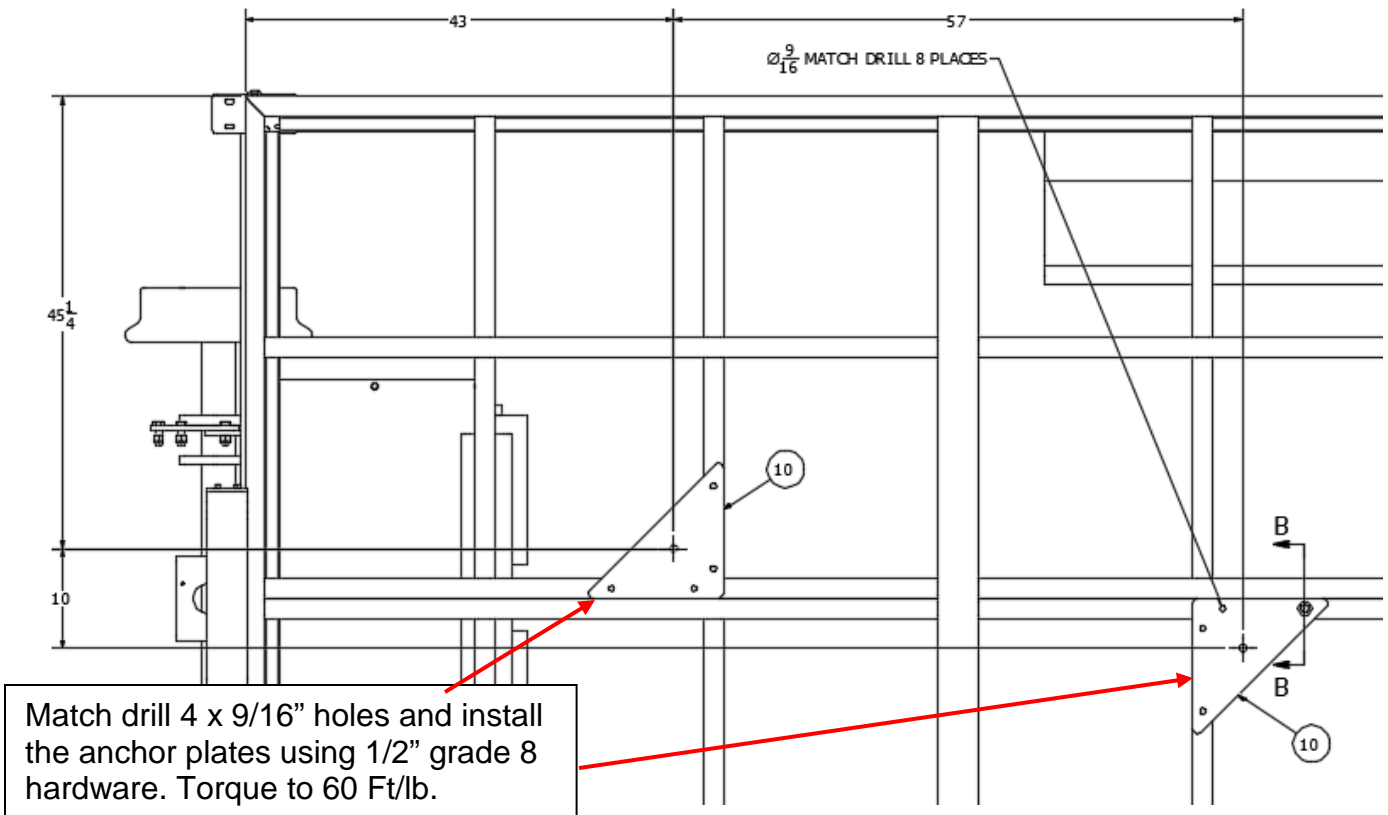
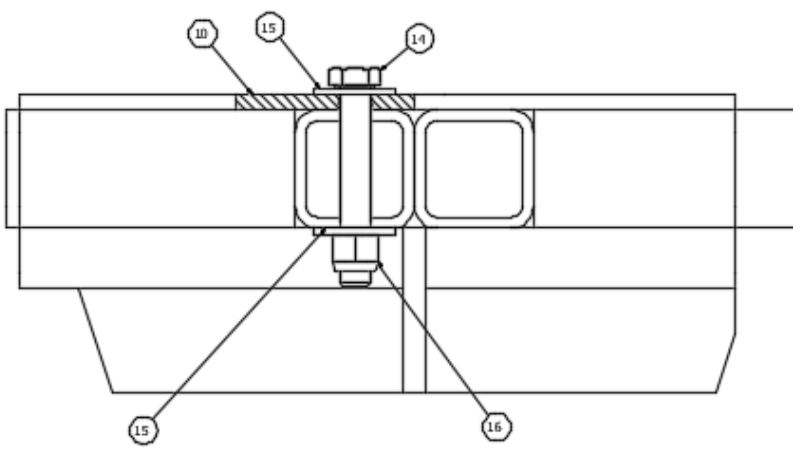


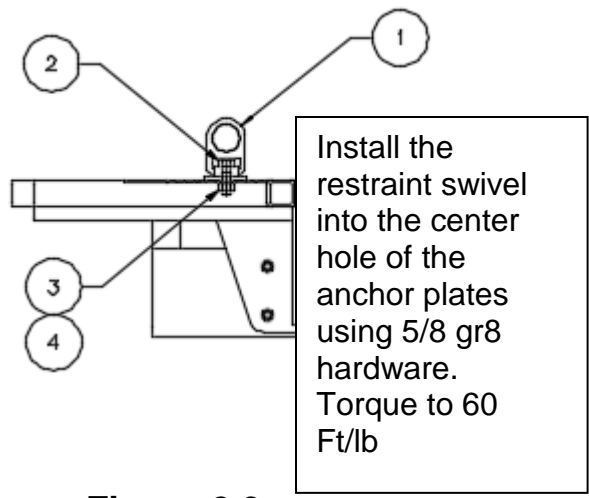
Figure 1.1



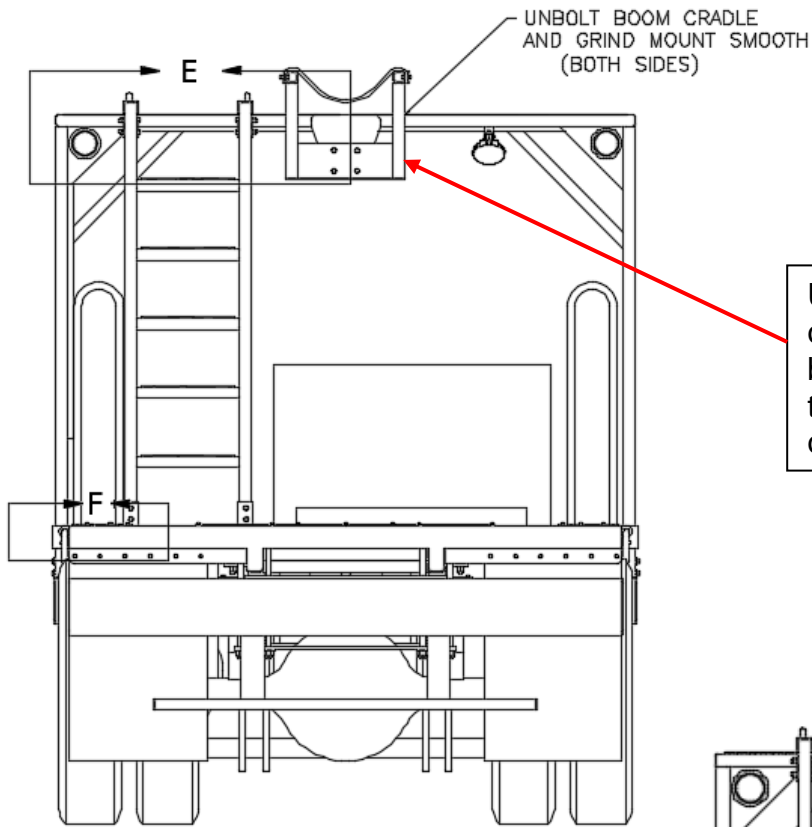
**Figure 2.1 (Detail "A")**  
Note: Expanded metal not shown.



**Figure 2.2**  
Section B-B (8 places)

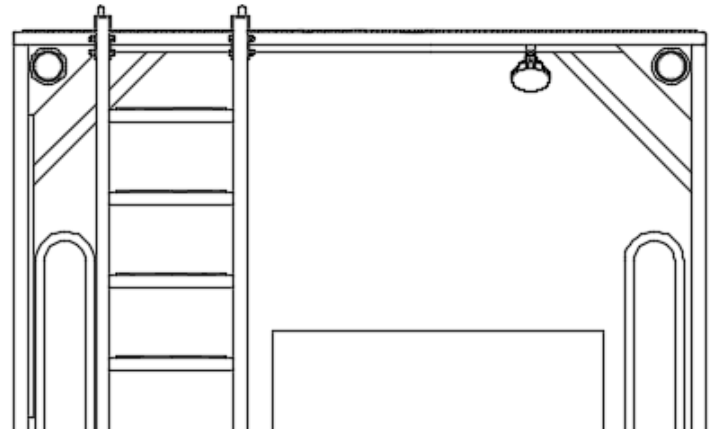


**Figure 2.3**  
Section G-G



Unbolt the boom cradle then grind off the mount to be flush with the bottom of the platform. Perform this task on both the front and rear of the platform.

**Figure 3.1**  
**Section E-E**



**Figure 3.2**  
**Section E-E**  
**(Boom Cradle Removed)**

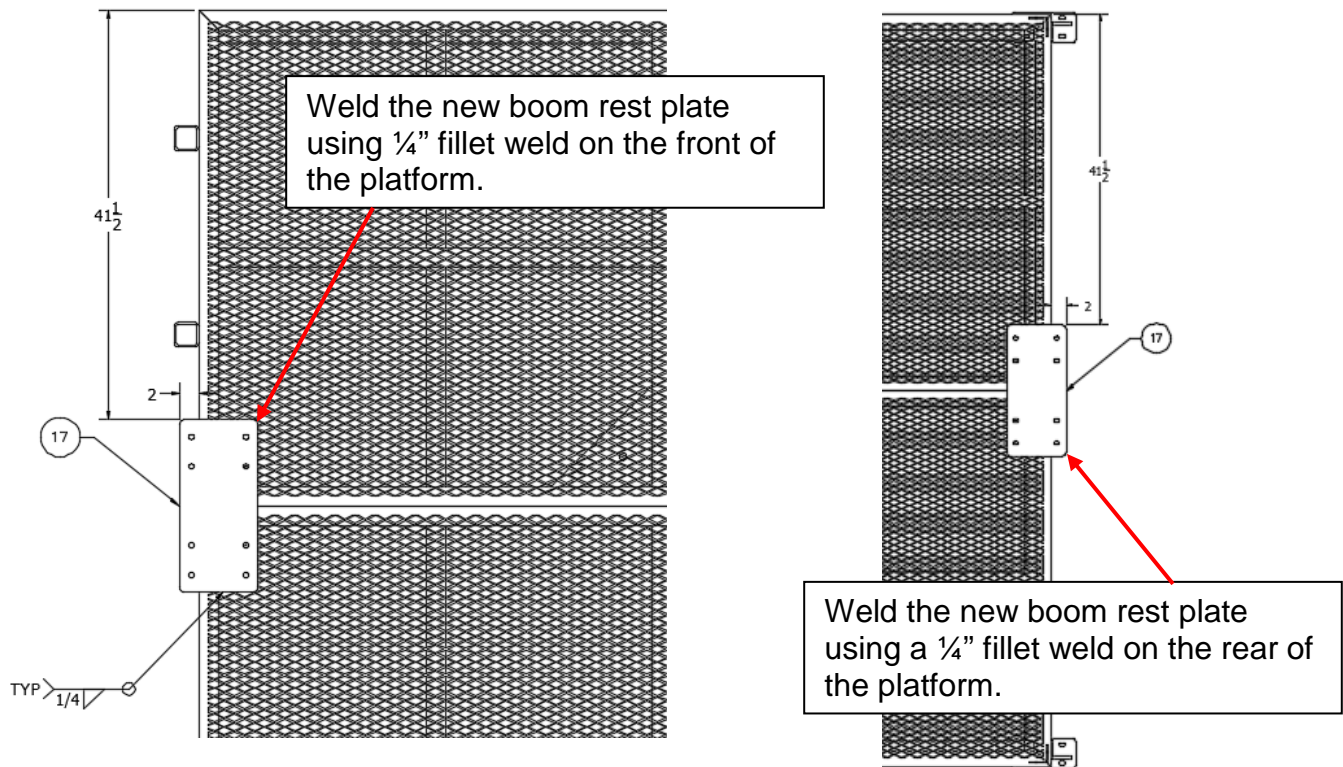


Figure 4.1 (Detail "A")

Note: Expanded metal shown

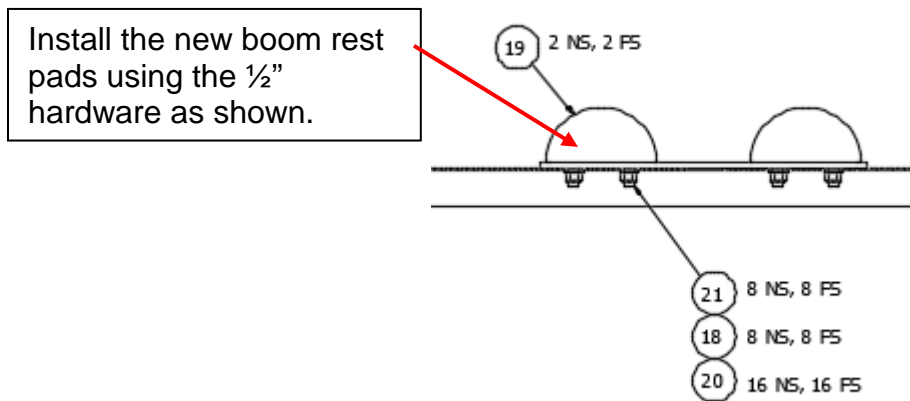
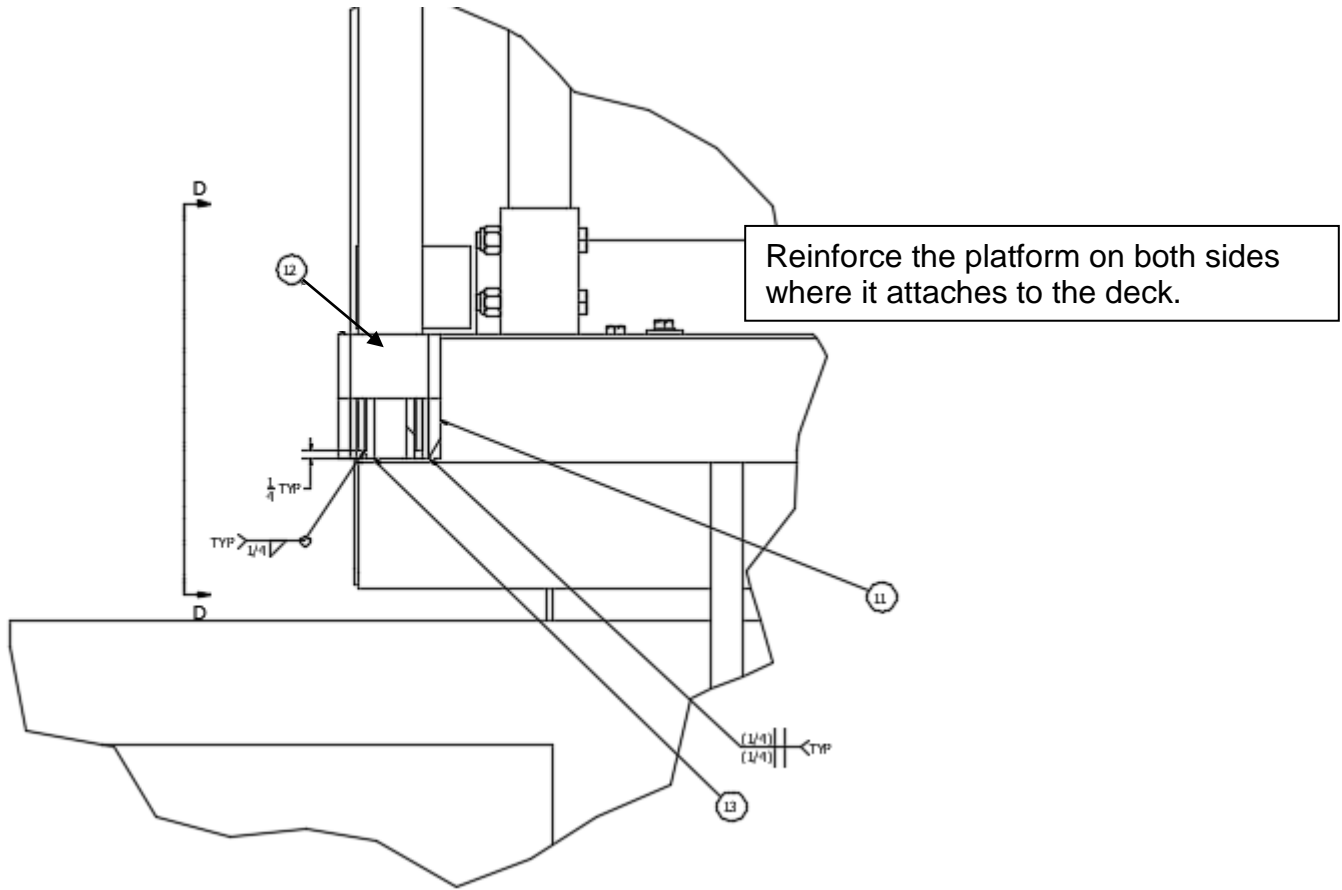
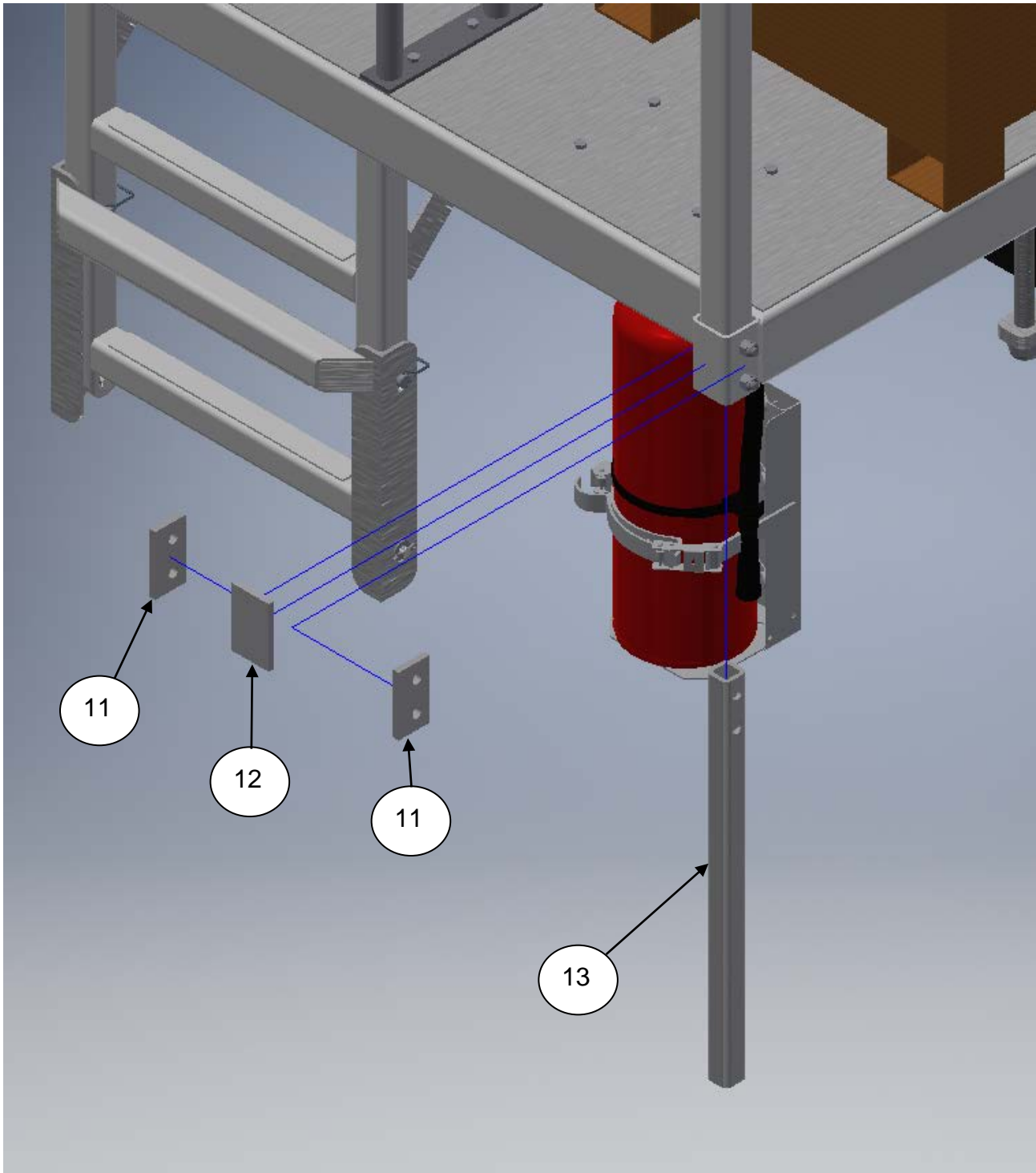


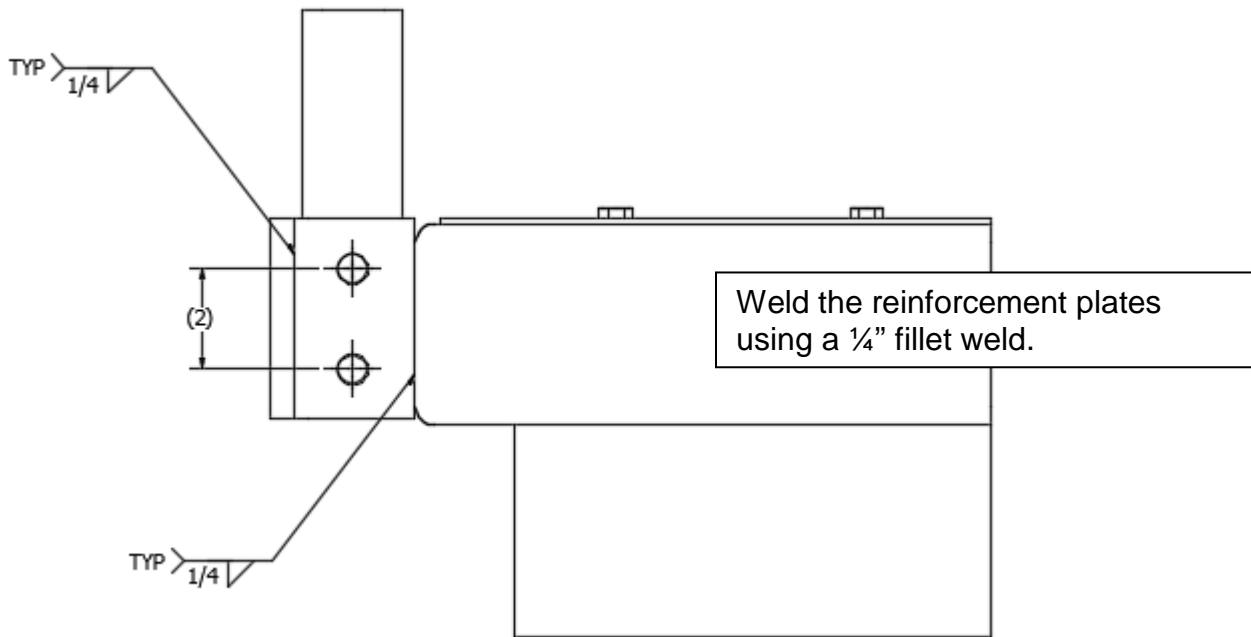
Figure 4.2  
Section J-J



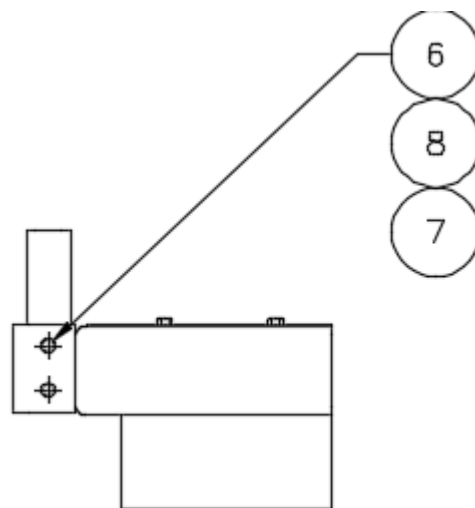
**Figure 5.1**  
**Detail C**



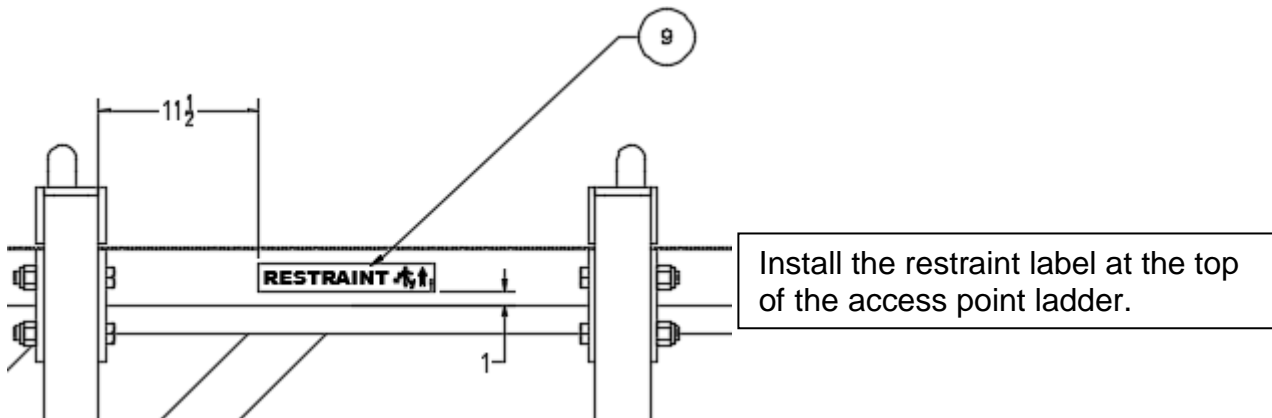
**Figure 5.2**  
**Exploded 3D view of Section D-D**



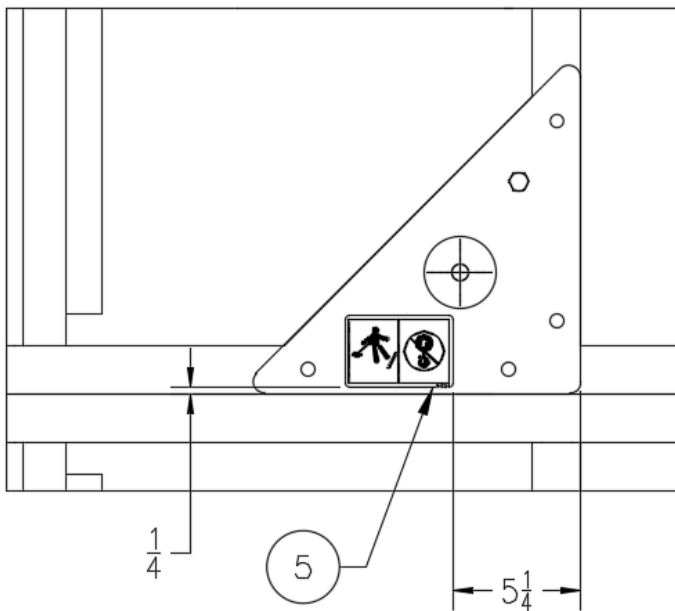
**Figure 5.3**  
**Section D-D**



**Figure 5.4**  
**Detail F**

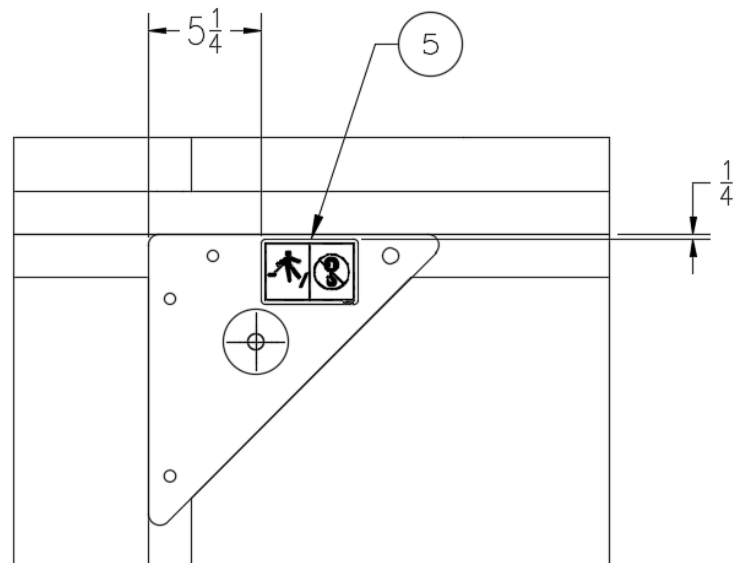


**Figure 6.1**  
**Detail E**



**Figure 6.2**  
**Detail H**

Install horizontal restraint labels on the restraint mounts as shown on both the front and rear horizontal restraints.



**Figure 6.3**  
**Detail K**



**Figure 6.4**

## Service Group Parts List

ITEM	PART NO	DESCRIPTION	QTY
1	840790	ANCHOR SWIVEL	2
2	151862	SCREW HHC, 5/8 UNC X 2.5 GR8	2
3	150840	WASHER, SPR LOCK REG .625	2
4	151863	NUT NYLOCK, 5/8-11 UNC FULL GR8	2
5	840794	LABEL, RESTRAINT/NO LIFT	2
6	035736	SCREW HHC, 9/16 UNC FULL GR5	4
7	813699	WASHER , FLAT THRU HARD 9/16 W	8
8	151734	NUT NYLOCK, 9/16-12 UNC FULL GR5	4
9	840795	LABEL, RESTRAINT	1
10	842252	PLATE, ANCHOR	2
11	840792	PLATE	4
12	840827	PLATE	2
13	840793	TUBE	2
14	748291	SCREW HHC, 1/2 UNC X 3 1/2 GR8	8
15	150808	WASHER, 1/2" PLAIN TYPE W	16
16	204748	NUT NYLOCK, INSERT HEX GR8	8
17	840644	PLATE	2
18	150740	NUT NYLOCK, 1/2-13 UNC FULL GR5	16
19	149753	PAD DOCK BUMPER	4
20	151223	WASHER, 1/2" PLAIN SAE	32
21	151855	SCREW HHC, 1/2 UNC x 2 3/4 GR5	16
22	837986	LABEL, FINAL STAGE MANUFACTURE	1
23	842250	KIT REBUILD, 75HRT PLATFORM SAFETY	1

NOTE: Item 23 includes all of the above items and detailed Progress Rail drawings.

P.O. Box 244100  
 Montgomery, AL 36124  
 Office: +1-334-387-9100  
 Fax: +1-334-387-9400