



SERVICE BULLETIN

Classification: BT19-006	Reference: NTB19-038	Date: May 13, 2019
-----------------------------	-------------------------	-----------------------

DEAD PEDAL REPLACEMENT

APPLIED VEHICLES: 2013 – 2019 Pathfinder (R52)
2014 Pathfinder Hybrid (R52)

SERVICE INFORMATION

If the dead pedal needs to be replaced for any reason, it is no longer necessary to replace the front floor trim (carpet).

The dead pedal is now available as a service part.



Figure 1

NOTE: Do not replace the carpet if only the dead pedal is needed.

ACTION

Follow the **SERVICE PROCEDURE** on the next page to replace **ONLY** the Dead pedal.

NOTE: Dead pedal is listed in **PARTS INFORMATION** on the last page.

IMPORTANT: The purpose of ACTION (above) is to give you a quick idea of the work you will be performing. You **MUST** closely follow the entire SERVICE PROCEDURE as it contains information that is essential to successfully completing this repair.

Nissan Bulletins are intended for use by qualified technicians, not 'do-it-yourselfers'. Qualified technicians are properly trained individuals who have the equipment, tools, safety instruction, and know-how to do a job properly and safely. NOTE: If you believe that a described condition may apply to a particular vehicle, DO NOT assume that it does. See your Nissan dealer to determine if this applies to your vehicle.

SERVICE PROCEDURE

1. Remove the driver side floor mat.

2. Remove the driver side kicking plate.

- Lift UP on the kicking plate to remove.

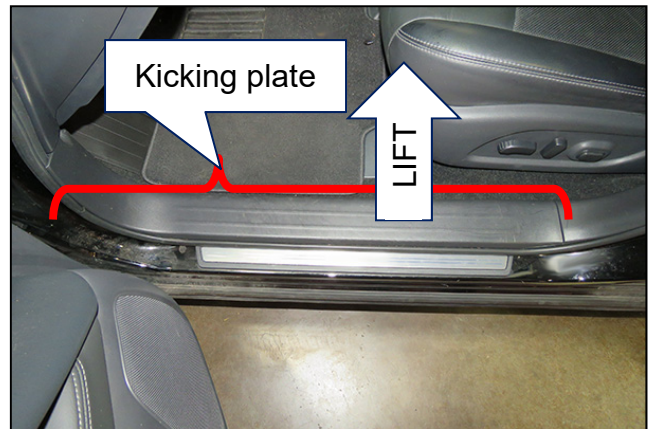


Figure 2

3. Pull the driver side door welt away from the body in the area indicated in Figure 3.

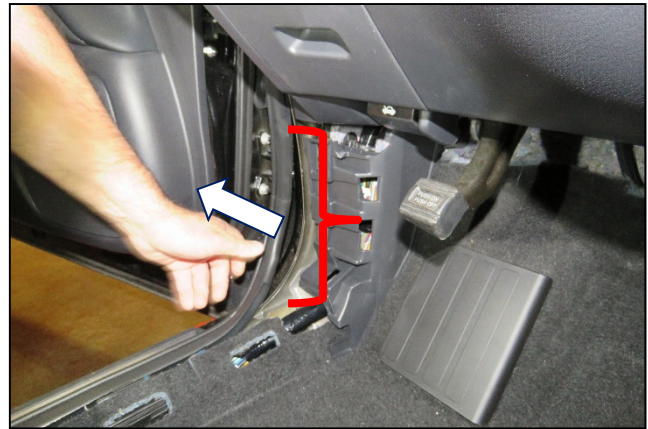


Figure 3

4. Remove the plastic screw from the kicking plate support.
 - Pull the kicking plate support towards the center of the vehicle to release 2 press-in clips.

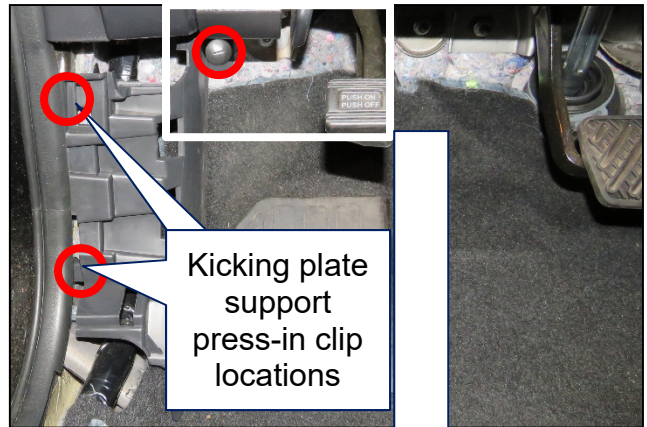


Figure 4

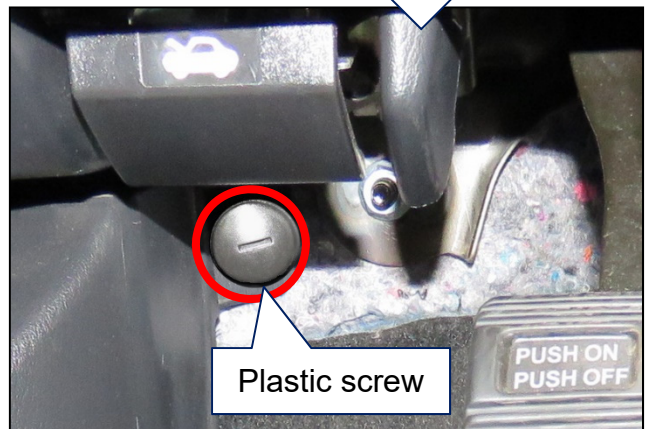


Figure 5

5. Pull the upper left corner of the carpet down, towards the driver seat.



Figure 6

6. Remove and discard the dead pedal, backing plate, and press fit nuts.

NOTE: These will be replaced with the NEW parts listed in **PARTS INFORMATION** on the last page.

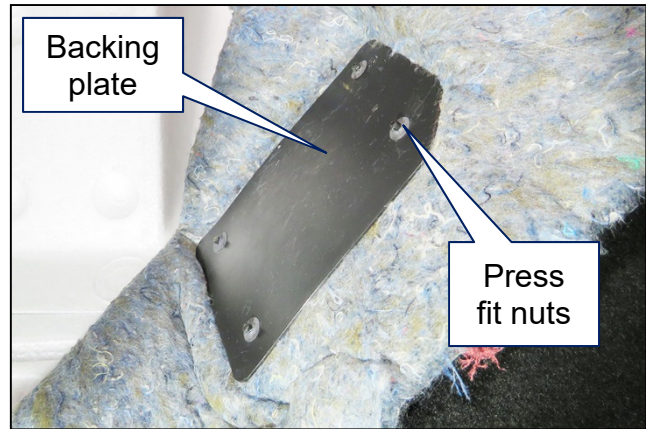


Figure 7

7. Temporarily fold the carpet back to the original position to locate the holes for the NEW dead pedal.



Figure 8

8. Position the NEW dead pedal into the holes in the carpet.

9. Fold the carpet back down towards the driver seat.

10. Place the backing plate onto the standoffs.

11. Press the push nuts onto the dead pedal standoffs.



Figure 9

NOTE: Using a 7 mm (1/4 inch) socket or open end wrench will help assure the push nuts are tight against the backing plate.

12. Fold the carpet back to its original location.



Figure 10

13. Install all remaining components in the reverse order of removal.

PARTS INFORMATION

DESCRIPTION	PART NUMBER	QUANTITY
Dead Pedal Repair Kit	74901 - 9NJ5E	1

CLAIMS INFORMATION

Submit a Primary Part (PP) type line claim using the following claims coding:

DESCRIPTION	PFP	OP CODE	SYM	DIA	FRT
Replace dead pedal	(1)	VX5LAA	(2)	(2)	0.2 hrs.

- (1) Reference the electronic parts catalog and use the Front Floor Carpet (74902-*****) as the Primary Failed Part (PFP).
- (2) Use the Symptom and Diagnostic codes that apply to the repair actually performed.

AMENDMENT HISTORY

PUBLISHED DATE	REFERENCE	DESCRIPTION
May 13, 2019	NTB19-038	Original bulletin published

