



SERVICE BULLETIN

Classification: EC17-035	Reference: NTB18-018a	Date: May 14, 2019
-----------------------------	--------------------------	-----------------------

2013-2015 ALTIMA; ROUGH IDLE ON START UP

This bulletin has been amended. See Amendment History on the last page.
Please discard previous versions of this bulletin.

APPLIED VEHICLES: 2013-2015 Altima (L33)

IF YOU CONFIRM

Under the condition listed below, when the engine is started it runs rough (rough idle) for a few seconds, and then will idle normally:

- The engine has been OFF (not running) long enough for the engine to be close to the same temperature as the ambient temperature (about 6 hours).

NOTE: This bulletin does not apply to the following issues:

- Engine does not start.
- Engine has a long crank time before starting.

ACTION

1. Inspect the PCV valve (see page 2).
 - If the PCV valve is **orange** in color, replace it.
 - See the **PARTS INFORMATION**.
 - If the PCV valve is **black** in color, do not replace it.
2. Refer to step 6 in the **SERVICE PROCEDURE** to confirm if a reprogram is available for the vehicle you are working on.
3. If a reprogram is available, reprogram the ECM.

IMPORTANT: The purpose of ACTION (above) is to give you a quick idea of the work you will be performing. You **MUST** closely follow the entire **SERVICE PROCEDURE** as it contains information that is essential to successfully completing this repair.

Nissan Bulletins are intended for use by qualified technicians, not 'do-it-yourselfers'. Qualified technicians are properly trained individuals who have the equipment, tools, safety instruction, and know-how to do a job properly and safely. NOTE: If you believe that a described condition may apply to a particular vehicle, DO NOT assume that it does. See your Nissan dealer to determine if this applies to your vehicle.

SERVICE PROCEDURE

PCV Valve Inspection

1. Open the engine hood and locate the PCV valve.

NOTE: An engine cover may need to be removed.

2. If the PCV valve is **orange** in color, replace it.

- See **PARTS INFORMATION**.
- Refer to the Electronic Service Manual (ESM), section **EC-Engine Control System**, for PCV valve replacement information.

NOTE: The new PCV valve is **black** in color.

3. If the vehicle's PCV valve is already **black** in color, do not replace it.

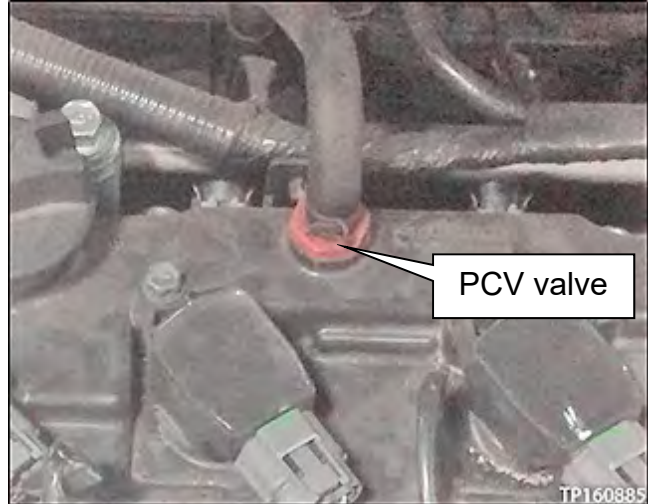


Figure A

ECM Reprogramming

IMPORTANT: Before starting, make sure:

- ASIST on the CONSULT PC has been synchronized (updated) to the current date.
- All CONSULT-III plus (C-III plus) software updates (if any) have been installed.
- The CONSULT PC is connected to the Internet (Wi-Fi or cable).

NOTE:

- Most instructions for reprogramming with CONSULT-III plus (C-III plus) are displayed on the CONSULT PC screen.
- If you are not familiar with the reprogramming procedure, [click here](#). This will link you to the "CONSULT- III plus (C-III plus) Reprogramming" general procedure.
- Take the vehicle for a 10 minute drive in order to meet the following Idle Air Volume Learn (IAVL) conditions:

- Engine coolant temperature: 70 - 105°C (158 - 221°F)
- Battery voltage: More than 12.9V (at idle)
- Transmission: Warmed up



Figure B

NOTE: After reprogramming is complete, you will be required to perform Throttle Valve Closed Position, Idle Air Volume Learn, Accelerator Closed Position, and DTC erase. The above conditions are required for IAVL to complete.

CAUTION:

- Connect the GR8 to the 12V battery and set to ECM power supply mode. If the vehicle battery voltage drops below 12.0V or above 15.5V during reprogramming, the ECM may be damaged.
- Be sure to turn OFF all vehicle electrical loads. If a vehicle electrical load remains ON, the ECM may be damaged.
- Be sure to connect the AC Adapter. If the CONSULT PC battery voltage drops during reprogramming, the process will be interrupted and the ECM may be damaged.
- Turn OFF all external Bluetooth® devices (e.g., cell phones, printers, etc.) within range of the CONSULT PC and the plus VI. If Bluetooth® signal waves are within range of the CONSULT PC during reprogramming, reprogramming may be interrupted and the ECM may be damaged.

1. Connect the CONSULT PC to the vehicle to begin the reprogramming procedure.
2. Open / start C-III plus.
3. Wait for the plus VI to be recognized.
 - The **Serial No.** will display when the plus VI is recognized.
4. Select **Re/programming, Configuration**.

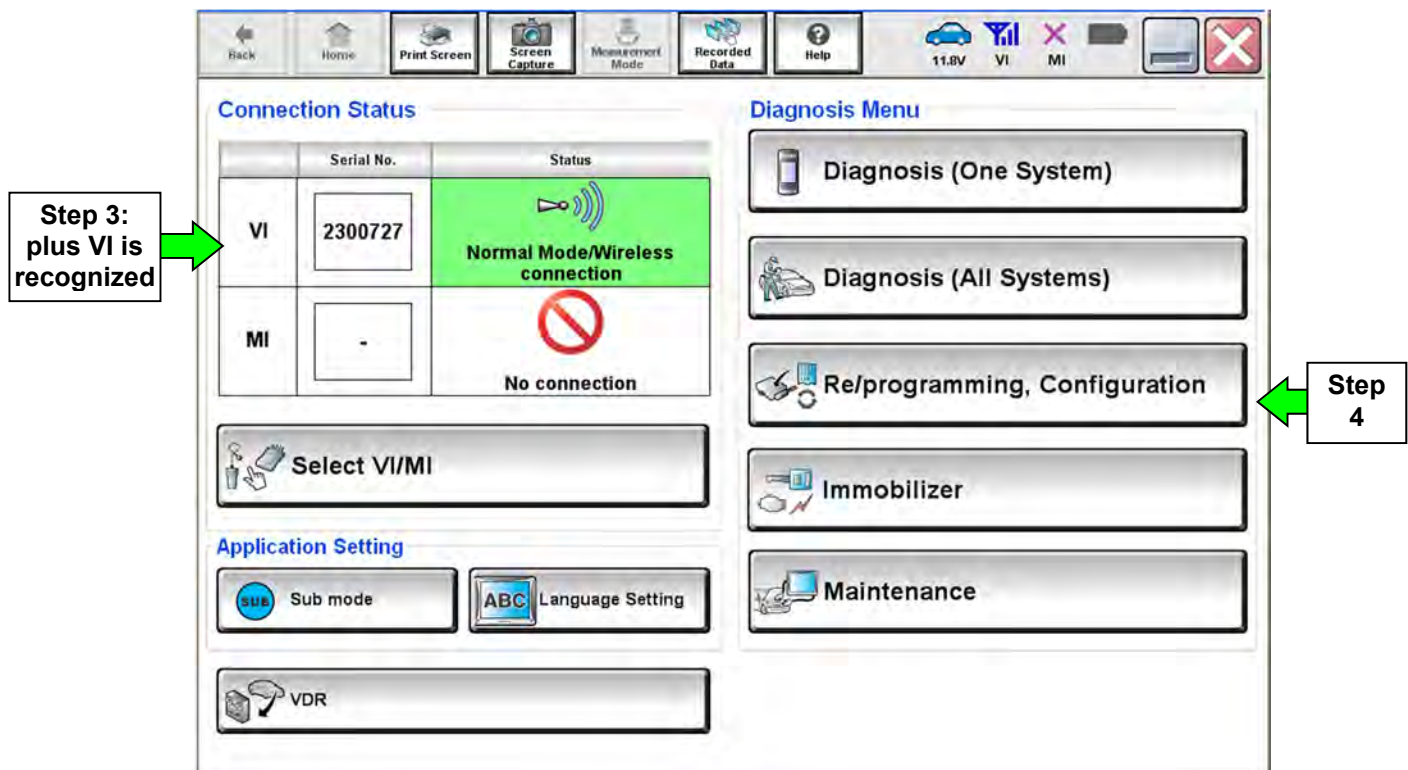


Figure 1

5. Follow the on-screen instructions and navigate C-III plus to the screen shown in Figure 2.

6. When you get to the screen shown in Figure 2, confirm this bulletin applies as follows.
 - A. Find the ECM **Part Number** and write it on the repair order.

NOTE: This is the current ECM Part Number (P/N).

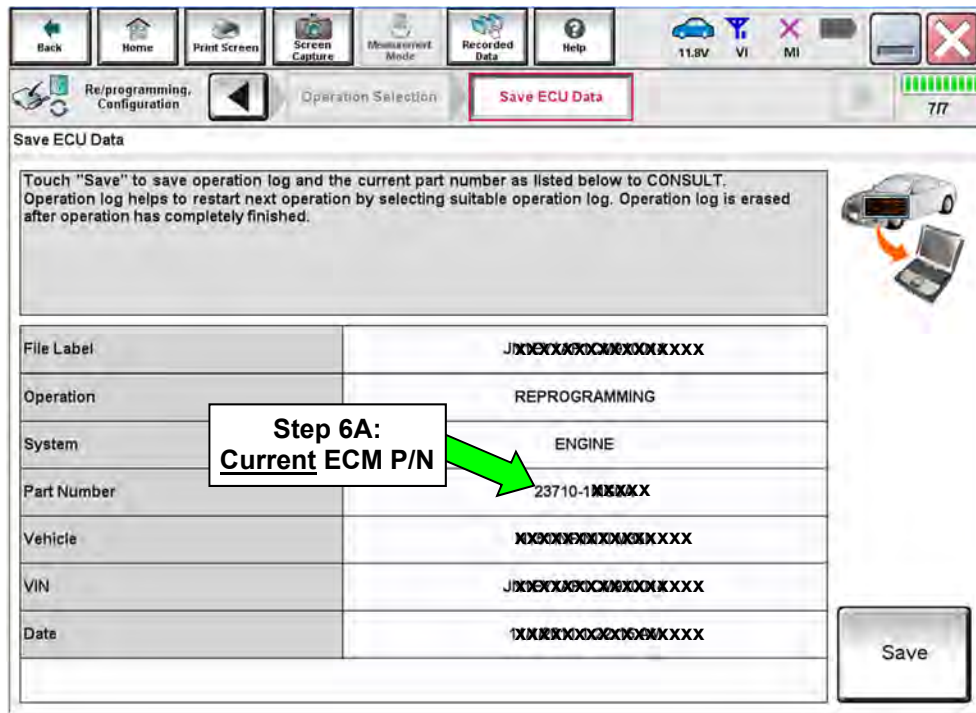


Figure 2

- B. Compare the P/N you wrote down to the numbers in the **Current ECM Part Number** column in **Table A** (page 5).
 - If there is a match, continue with the reprogramming procedure.

 - If there is not a match, close C-III plus and refer to ASIST for further diagnostic information.

Table A

MODEL	YEAR	CURRENT ECM PART NUMBER: 23710-
Altima	2013	3TA0A, 3TA0B, 3TA0C
		3TA1B, 3TA1C, 3TA1D
		3TA6A, 3TA6B, 3TA6C, 3TA6D, 3TA6E
		3TA7A, 3TA7B, 3TA7C, 3TA7D, 3TA7E
		3TA8A, 3TA8B, 3TA8C, 3TA8D, 3TA8E
		3TM3A, 3TM4A, 3TM5A, 3TM6A
		3TM7A, 3TM8A
		3TY0A, 3TY0B, 3TY0C
		3TY1A, 3TY1B, 3TY1C
		3TY6A, 3TY6B, 3TY6C, 3TY6D, 3TY6E
		3TY7A, 3TY7B, 3TY7C, 3TY7D, 3TY7E
		3TY8A, 3TY8B, 3TY8C, 3TY8D, 3TY8E
	2014	9HM3A, 9HM3B, 9HM3C, 9HM3D, 9HM3E
		9HM4A, 9HM4B, 9HM4C, 9HM4D, 9HM4E
		9HM5A, 9HM5B, 9HM5C, 9HM5D, 9HM5E
		9HM6A, 9HM6B, 9HM6C, 9HM6D, 9HM6E
		9HM7A, 9HM7B, 9HM7C, 9HM7D, 9HM7E
		9HM8A, 9HM8B, 9HM8C, 9HM8D, 9HM8E
	2015	3GL6A, 3GL7A, 3GL8A
		3GL3B, 3GL4B, 3GL5B
		9GL3A, 9GL4A, 9GL5A
		9HP0A, 9HP0B, 9HP0C, 9HP0D, 9HP0E
		9HP1A, 9HP1B, 9HP1C, 9HP1D, 9HP1E
		9HP2A, 9HP2B, 9HP2C, 9HP2D, 9HP2E
		9HP3A, 9HP3B, 9HP3C, 9HP3D, 9HP3E
		9HP4A, 9HP4B, 9HP4C, 9HP4D, 9HP4E
	9HP5A, 9HP5B, 9HP5C, 9HP5D, 9HP5E	

7. Follow the on-screen instructions to navigate C-III plus and reprogram the ECM.

NOTE:

- In some cases, more than one new P/N for reprogramming is available.
 - If more than one new P/N is available, the screen in Figure 3 displays.
 - Select and use the reprogramming option that does **not** have the message “Caution! Use ONLY with NTBXX-XXX”.
- If you get this screen and it is blank (no reprogramming listed), it means there is no reprogramming available for this vehicle. Close C-III plus and refer back to ASIST for further diagnosis.

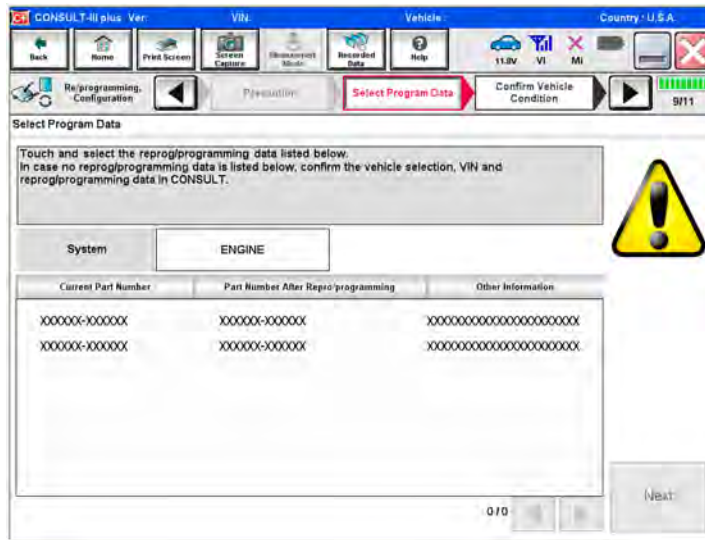


Figure 3

- Before reprogramming will start, you will be required to enter your User Name and Password.
 - The CONSULT PC must be connected to the Internet (Wi-Fi or cable).
 - If you do not know your User Name and Password, contact your Service Manager.

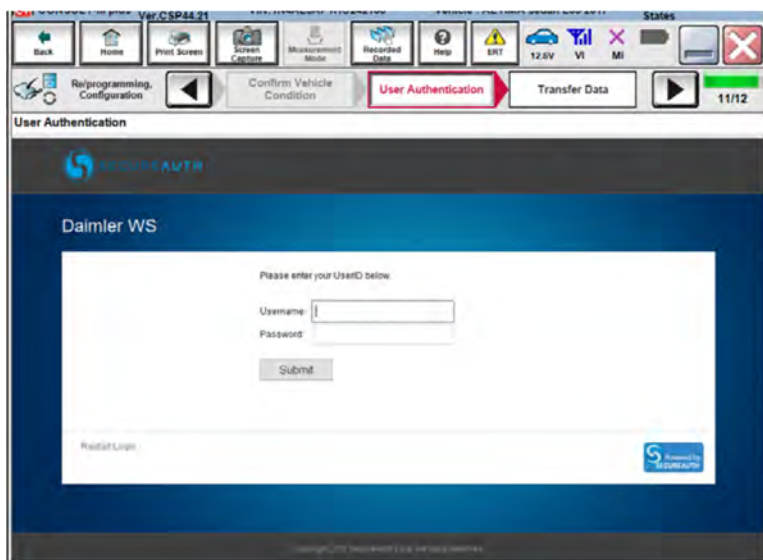


Figure 4

8. When the screen in Figure 5 displays, reprogramming is complete.

NOTE: If the screen in Figure 5 does not display (indicating that reprogramming did not complete), refer to ECM recovery on the next page.

9. Disconnect the GR8 (battery charger) from the vehicle.

10. Select **Next**.

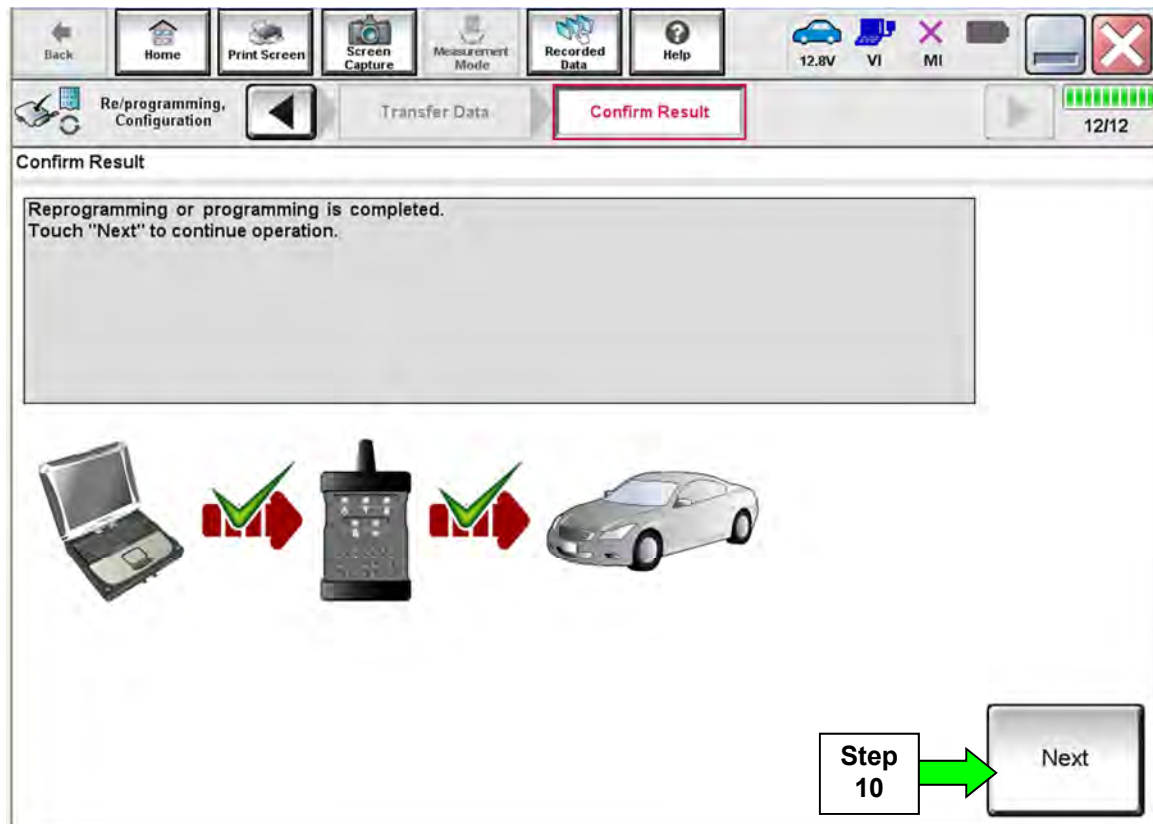


Figure 5

NOTE:

- In the next steps (page 9), you will perform Throttle Valve Closed Position, Idle Air Volume Learn, Accelerator Closed Position, and DTC erase.
- These operations are required before C-III plus will provide the final reprogramming confirmation report.

ECM Recovery

Do not disconnect plus VI or shut down Consult III plus if reprogramming does not complete.

If reprogramming does not complete and the “!?” icon displays as shown in Figure 6:

- Check battery voltage (12.0 - 15.5 V).
- Ignition is ON, engine OFF.
- External Bluetooth® devices are OFF.
- All electrical loads are OFF.
- **Select retry and follow the on screen instructions.**
- **“Retry” may not go through on first attempt and can be selected more than once.**

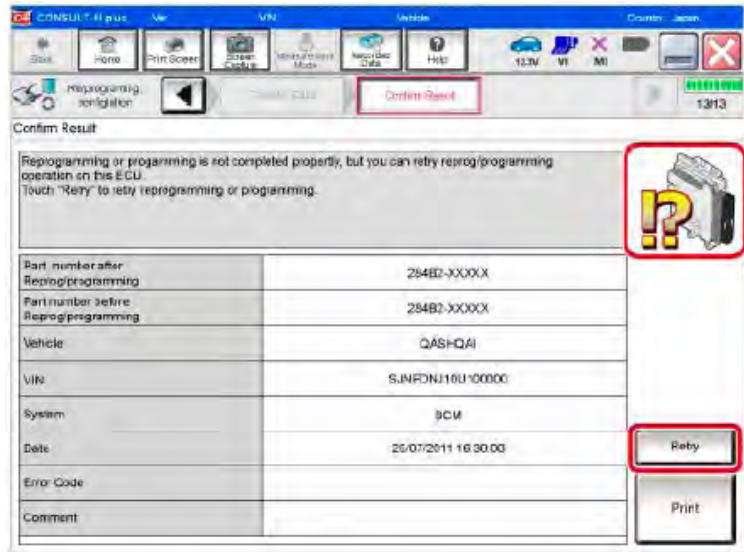


Figure 6

If reprogramming does not complete and the “X” icon displays as shown in Figure 7:

- Check battery voltage (12.0 - 15.5 V).
- CONSULT A/C adapter is plugged in.
- Ignition is ON, engine OFF.
- Transmission is in Park.
- All C-III plus / VI cables are securely connected.
- All C-III plus updates are installed.
- **Select Home, and restart the reprogram procedure from the beginning.**

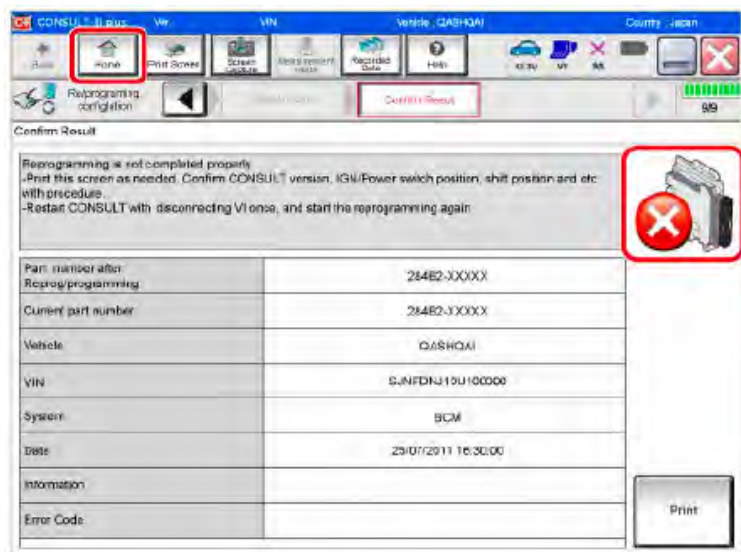


Figure 7

11. Follow the on-screen instructions to perform the following:

- **Throttle Valve Closed Position**

- **Idle Air Volume Learn (IAVL)**

NOTE:

- **Listed below are common conditions required for IAVL to complete.**

- **If IAVL does not complete within a few minutes, a condition may be out of range.**

- **Refer to the appropriate Electronic Service Manual (ESM) for specific conditions required for the vehicle you are working on.**
 - Engine coolant temperature: 70 -105° C (158 -221°F)
 - Battery voltage: More than 12.9V (At idle)
 - Selector lever: P or N
 - Electric load switch: OFF (Air conditioner, headlamp, rear window defogger)
 - Steering wheel: Neutral (Straight-ahead position)
 - Vehicle speed: Stopped
 - Transmission: Warmed up

- **Accelerator Pedal Close Position Learning**

- **Erase DTCs**

Continue to the next page.

12. When the entire reprogramming process is complete, the screen in Figure 8 will display.
13. Verify the before and after part numbers are different.
14. Print a copy of this screen (Figure 8) and attach it to the repair order for warranty documentation.
15. Select **Confirm**.

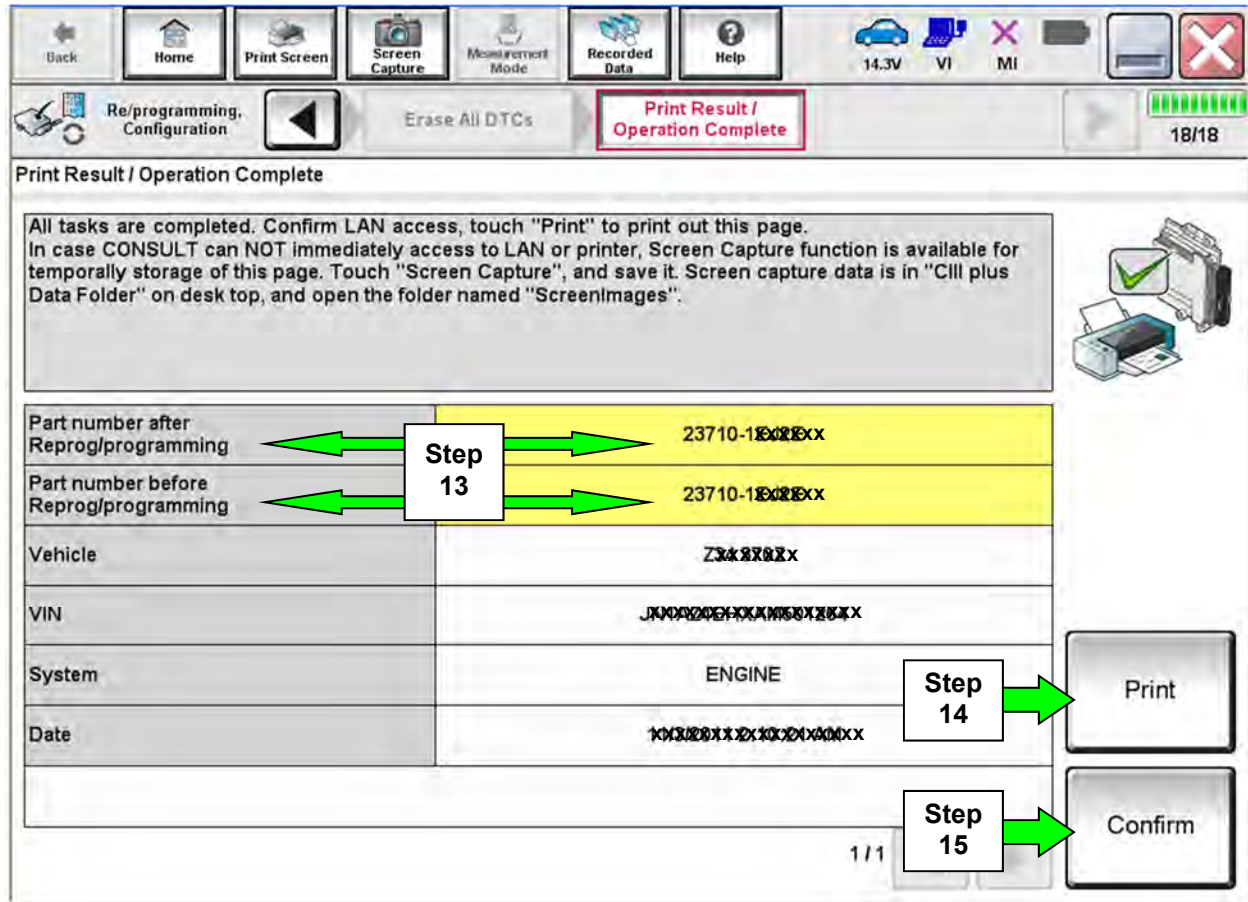


Figure 8

16. Close C-III plus.
17. Turn the ignition OFF.
18. Disconnect the plus VI from the vehicle.
19. Test drive the vehicle and make sure it operates correctly and the MIL is OFF.
 - If the MIL comes ON, go back to ASIST for further diagnostic information.
 - Diagnosis and repairs beyond ECM reprogramming are not covered by this bulletin.

PARTS INFORMATION

DESCRIPTION	PART NUMBER	QUANTITY
VALVE ASSY-CONTROL (PCV valve - black in color)	11810-6N202	1 (if needed)

CLAIMS INFORMATION

Submit a PP (Primary Part) type claim using the following claims coding:

DESCRIPTION	PFP	OP CODE	SYM	DIA	FRT
Reprogram ECM	(1)	DE97AA	ZE	32	(2) (3)

- (1) Refer to the electronic parts catalog (EPC) and use the Blank ECM assembly part number (23703-*****) as the Primary Failed Part (PFP).
- (2) Reference the current Nissan Warranty Flat Rate Manual and use the indicated FRT.
- (3) FRT allows adequate time to access DTC codes and reprogram ECM. No other diagnostic procedures subsequently required. Do NOT claim any Diagnostic Op Codes with this claim.

If the PCV Valve is inspected and replaced:

DESCRIPTION	PFP	OP CODE	SYM	DIA	FRT
RPL PCV Valve	(1)	AR32AA	ZE	32	(2)

- (1) Refer to the electronic parts catalog (EPC) and use the Blank ECM assembly part number (23703-*****) as the Primary Failed Part (PFP).
- (2) Reference the current Nissan Warranty Flat Rate Manual and use the indicated FRT.

AMENDMENT HISTORY

PUBLISHED DATE	REFERENCE	DESCRIPTION
March 1, 2018	NTB18-018	Original bulletin published
May 14, 2019	NTB18-018a	Updated IF YOU CONFIRM section.