

**June 12, 2019**

Version 1

## MIL Comes On with DTC P0716

### AFFECTED VEHICLES

Year	Model	Trim	VIN Range
2016-17	Pilot	Touring and Elite	ALL

### BACKGROUND

During a downshift from 9th or 8th gear to 7th gear or lower, a miscalculation in the TCM software causes the MIL to come on with DTC P0716, input shaft [mainshaft] speed sensor [range/performance].

### CORRECTIVE ACTION

Check if the on-board snapshot shows DTC P0716. If it does, send it to Tech Line referencing the repair order number and update the TCM software.

If the on-board snapshot does not show DTC P0716, this bulletin does not apply.

### WARRANTY CLAIM INFORMATION

The normal warranty applies.

Operation Number	Description	Flat Rate Time	Defect Code	Symptom Code	Template ID	Failed Part Number
1255C7	Update the TCM software.	0.2 hr	03214	03217	A19004A	28103-5EY-A000

Skill Level: Repair Technician

**CUSTOMER INFORMATION:**The information in this bulletin is intended for use only by skilled technicians who have the proper tools, equipment, and training to correctly and safely maintain your vehicle. These procedures should not be attempted by "do-it-yourselfers," and you should not assume this bulletin applies to your vehicle, or that your vehicle has the condition described. To determine whether this information applies, contact an authorized Honda automobile dealer.

## SOFTWARE INFORMATION

### NOTE

Unnecessary or incorrect repairs resulting from a failure to update the i-HDS are not covered under warranty.

i-HDS Software Version: **1.005.016 or later**

J2534 Rewrite Software Information:

- PC Application Version **1.1.0.6 or later**
- Database update **30-May-2019**

**Before beginning the repair, make sure that both the i-HDS and J2534 Rewrite software are updated as listed above.**

**Do only the update listed in this service bulletin.**

**You cannot apply the updates with the MVCI as a standalone tool.** To update the software you must use the MVCI or the DST-i interface in conjunction with the J2534 Rewrite software on the i-HDS.

For more information about updating the i-HDS, the MVCI, and vehicle systems, refer to service bulletin 01-026, *Updating Control Units/Modules*.

Year/Model	Trim	Program ID	Program P/N
2016	2WD	28103-5EY-A000	28103-5EY-A00
2016	AWD	28103-5EZ-A000	28103-5EZ-A00
2017	2WD	28103-5EY-A100	28103-5EY-A10
2017	AWD	28103-5EZ-A100	28103-5EZ-A10

## REPAIR PROCEDURE

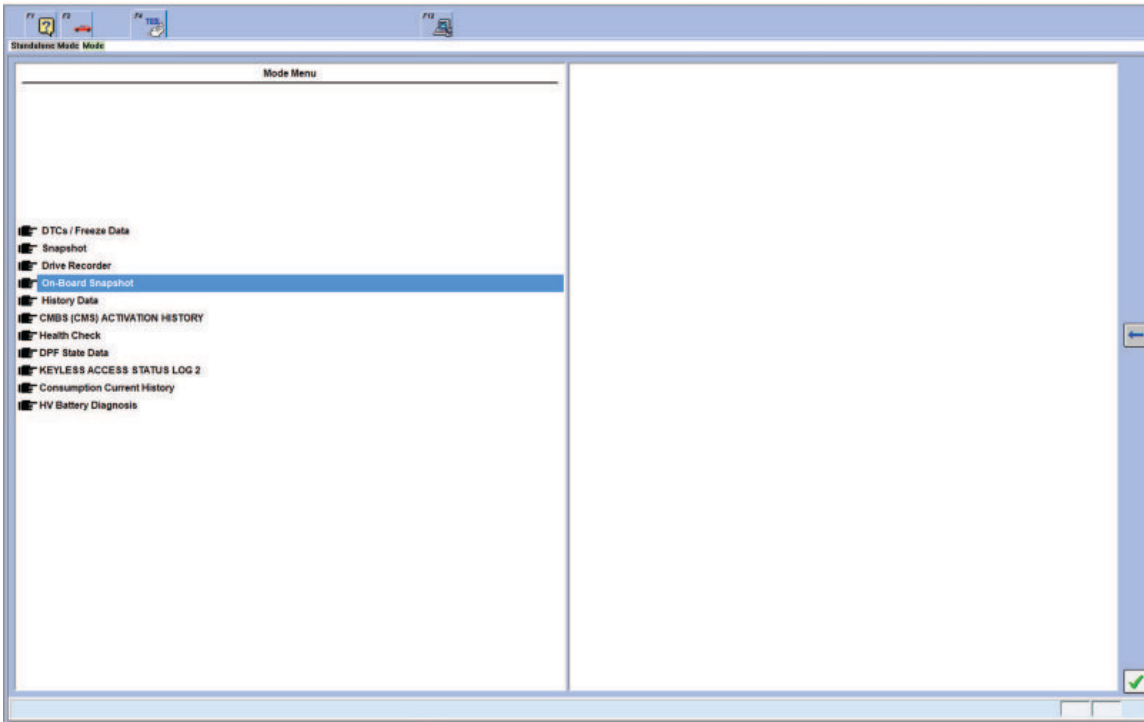
1. Turn the ignition to ON.
2. Connect the i-HDS, and go to the **A/T Data List**. Check if the software has been updated by comparing the Program ID with the table in SOFTWARE INFORMATION.

**PROGRAM ID**

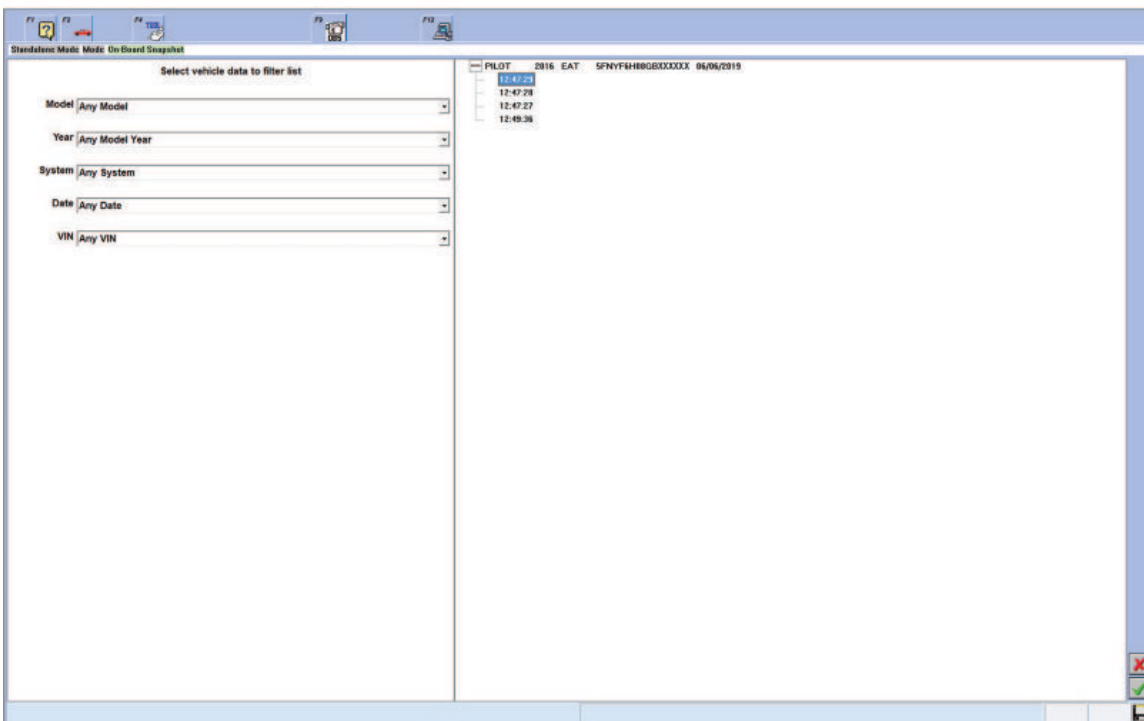
Signal	Value	Unit
Vehicle Speed from Transmission Output (Counter Shaft) Speed	0	MPH
Input Shaft (Mainshaft) Speed	2000	rpm
Engine Speed	3300	rpm
SBW Selector Position 1	OTHER	
SBW Selector Position 2	0	
Frontal Shift Switch	OTHER	
Brake Switch	OFF	
ETR	84	%
Calculated Engine torque	0.0	Nm
Integrated Dynamic Mode(IG)	Normal	
Target gear shifting	50	
Driver Side Door Switch	CLOSE	
Driver Side Seatbelt Switch	ON	
Clutch target torque	20.0	Nm
Parking Sensor Signal P	Other	
Parking Sensor Signal not P	Not Parking	
Oil pressure sensor voltage	5.50	V
A/T SHIFT SOL. VLV. A: Automatic Transmission Shift Solenoid Valve A	OFF	
A/T SHIFT SOL. VLV. B: Automatic Transmission Shift Solenoid Valve B	OFF	
A/T SHIFT SOL. VLV. C: Automatic Transmission Shift Solenoid Valve C	ON	
A/T SHIFT SOL. VLV. D: Automatic Transmission Shift Solenoid Valve D	ON	
TP SENSOR: Throttle Position Sensor	6	%
APV SENSOR: Accelerator Pedal Position Sensor	07	%
Shift Map Number	5	
A/T Clutch Pressure Control Solenoid Valve A Actual	400	mk
A/T Clutch Pressure Control Solenoid Valve B Actual	300	mk
A/T Clutch Pressure Control Solenoid Valve C Actual	400	mk
A/T Clutch Pressure Control Solenoid Valve D Actual	0	mk
A/T Clutch Pressure Control Solenoid Valve E Actual	0	mk
A/T Clutch Pressure Control Solenoid Valve F/A Actual	300	mk
SBW Position Indicator	0	
A/T Temp Indicator	OFF	
Battery voltage	12.00	V
Sampling Data Timing(fixed data at DTC occurrence)		Sampling data is stored when FC stored
Engine Coolant Temperature (fixed data at DTC occurrence)	185.0	°F
A/T temperature(fixed data at DTC occurrence)	181.2	°F
Intake Air Temperature (fixed data at DTC occurrence)	55.0	°F
Atmospheric Pressure(fixed data at DTC occurrence)	59	kPa
*Clutch D* presumption temperature(fixed data at DTC occurrence)	302.0	°F
*Clutch C* presumption temperature(fixed data at DTC occurrence)	302.0	°F
*Clutch D* presumption temperature(fixed data at DTC occurrence)	302.0	°F
*Clutch E* presumption temperature(fixed data at DTC occurrence)	302.0	°F
*Clutch LC* presumption temperature(fixed data at DTC occurrence)	302.0	°F

- If the Program ID shown matches the table, the vehicle has been updated and this service bulletin does not apply. Continue with normal system troubleshooting.
- If the Program ID shown does not match the table, the vehicle has not been updated. Go to step 3.

3. Select **Mode Menu**, then **On-Board Snapshot**.

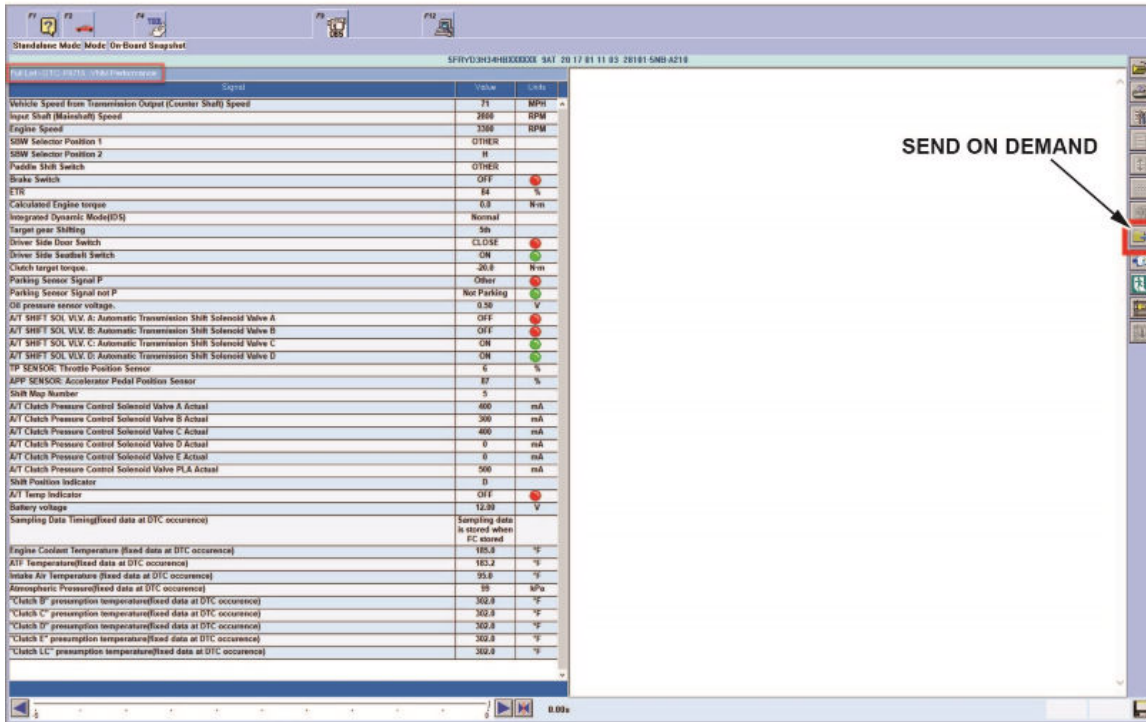


4. Select and view all available on-board snapshots for Automatic Transmission (EAT).



- If no on-board snapshots show P0716, this service bulletin does not apply. Continue with normal system troubleshooting.

- If an on-board snapshot shows P0716, select **Send On Demand** to e-mail it to Tech Line, then go to step 5.



5. Update the TCM software using the i-HDS J2534 Rewrite software with the MVI or DST-i. Refer to service bulletin 01-023, *Updating Control Units/Modules*.

END