



Replace LH Front Drive Unit Clevis Mount and Both Front Halfshafts

| | | | | | |
|-----------------------|-----------------|----------------------|-----------------------|-----------------------|------------|
| Classification | Repair Bulletin | Section/Group | 39 - Front Drive Unit | Country/Region | All |
| Year | 2014 - 2019 | Model | Model S, Model X | Version | Dual Motor |

Bulletin Classification: *This repair bulletin provides instructions and guidelines for a noted condition or a customer concern. The information provided can address a broad range of known or perceived issues with the operation of Tesla vehicles. This bulletin might not be VIN-specific. These instructions assume knowledge of motor vehicle and high voltage electrical component repairs, and should only be executed by trained professionals. Tesla assumes no liability for injury or property damage due to a failure to properly follow these instructions or repairs attempted by unqualified individuals.*

Condition

During hard acceleration, the driver might notice vibrations coming from the front of some Model S or Model X vehicles.

Correction

Upon customer complaint, inspect the vehicle for symptoms related to the condition. If symptoms are present, replace the LH front drive unit clevis mount and both front drive unit halfshafts.

| Correction Description | Correction | Time |
|---|------------|------|
| SB-19-39-001 Not Applicable | S011939001 | 0.00 |
| Inspect Vehicle, Replace LH Front Drive Unit Clevis Mount And Both Front Halfshafts (Model S) | S021939001 | 2.05 |
| Inspect Vehicle, Replace LH Front Drive Unit Clevis Mount And Both Front Halfshafts (Model X) | S031939001 | 2.10 |

| Required Part(s): | Part Number | Description | Quantity |
|-------------------|--------------|---------------------------------------|----------|
| | 1055366-00-H | CLVS ASSY,DBL ISO,LHS MTR MNT,SDU-F | 1 |
| | 2007073 | NUT HF M14x2.00 [10]-G720 | 2 |
| | 1056323-00-A | BOLT HF M14x102 PC109 | 2 |
| | 1137112-00-A | BOLT,TE,M10X1.5x48[10.9] U-ZNNI-MP CW | 2 |
| | 1004350-00-A | BLT BTNHD M10x1.50x57 [10.9] ZnAl-W | 2 |
| | 1055663-00-A | NUT PLATE ASSY,LHS MTR MNT,SDU-F | 1 |
| | 1020296-00-B | WASHER SAFETY M24x39 | 2 |
| | 1004356-00-B | NUT HFPT M14-2.00 [10] ZnNi-W | 2 |
| | 2007090-00-C | NUT HF M10x1.25 PC10 PTP COLORED | 2 |
| | 1004351-00-A | NUT HF M10x1.50 [10] ZnAl-W | 2 |
| | 1008722-00-A | BOLT HF M8x30 PC109 ADH MAT | 4 |
| | 1009169-00-A | BOLT HF M14x2.00x50 DP [10.9] ZnAl-W | 2 |

For Model S vehicles:

| | | |
|--------------|---------------------------------|---|
| 1030616-00-B | HALFSHAFT, FR, RH, MODEL S HPDM | 1 |
| 1030615-00-B | HALFSHAFT, FR, LH, MODEL S HPDM | 1 |

For Model X vehicles:

| | | |
|--------------|---------------------------|---|
| 1027119-00-B | HALFSHAFT, FR RH, MODEL X | 1 |
| 1027113-00-B | HALFSHAFT, FR LH, MODEL X | 1 |

Shop supplies:

Brake cleaner
 Paint pen
 Foldable funnel
 Oil drain container
 Wheel chocks
 Molykote M-77 paste

These part numbers were current at the time of publication. Use the revisions listed or later, unless otherwise specified in the Parts Manual.

| Special Tool(s): | Part Number | Description |
|------------------|--------------|-----------------------------|
| | 1096075-00-A | TOOL, HUB PULLER, HYDRAULIC |
| | 1498673-00-A | KIT, CABLE AXLE REMOVER |
| | 1081765-00-A | 3/4 TON UNDERHOIST STAND |

Procedure

- Perform a test drive where safe, quickly accelerating to highway speeds.
 - If vibration under hard acceleration is not detected, discontinue this procedure.
 - If vibration under hard acceleration is detected, continue to the next step.
- Remove the lug nut covers (if equipped) and loosen the lug nuts of the LH and RH front wheels.
- Raise the vehicle, remove the LH and RH front wheels, and then remove the LH and RH front wheel center caps.
- Reinstall the LH and RH front wheels and lug nuts (torque 175 Nm), and then lower the vehicle until the wheels are touching the ground.
- Loosen, but do not remove, the nuts that attach the LH and RH front halfshafts to the front hub assemblies (torque 245 Nm).
- Remove the rear underhood apron (refer to Service Manual procedure 12251102).
- Remove the LH and RH underhood aprons (refer to Service Manual procedure 12251202).
- Remove the front underhood apron (refer to Service Manual procedure 12251002).

9. If equipped, remove the HEPA filter inlet duct (refer to Service Manual procedure 18105001).
10. If equipped, remove the HEPA filter outlet duct (refer to Service Manual procedure 18105202).
11. Disconnect 12V power (refer to Service Manual procedure 17010200).
12. If equipped, remove the HEPA filter housing (refer to Service Manual procedure 18100202).
13. Remove the front skidplate (refer to Service Manual procedure 30011002).
14. Drain the front gearbox fluid (refer to Service Manual procedure 39300102).
15. Remove the bolt that attaches the lower intermediate shaft to the steering rack (torque 30 Nm) (Figure 1), and then slide the shaft off the steering rack.



Figure 1

16. Remove the RH front wheel.
17. Remove the nut and discard the washer that attaches the RH halfshaft to the RH front hub assembly (Figure 2).

NOTE: The washer must be discarded and replaced with a new washer. The nut may be reused.



Figure 2

18. Install a hub puller on the RH front hub assembly, and then free the halfshaft from the hub splines (Figure 3).



Figure 3

19. Release the grommet that attaches the RH wheel speed sensor to the RH front knuckle (Figure 4).



Figure 4

20. Release the clip that attaches the RH wheel speed sensor to the RH front knuckle (Figure 5).



Figure 5

21. Remove the bolt and discard the nut that attaches the RH front knuckle to the RH front upper control arm (torque 60 Nm) (Figure 6).

NOTE: The nut must be discarded and replaced with a new nut. The bolt may be reused.



Figure 6

22. Remove the bolt and nut that attach the RH front shock absorber to the RH front lower aft link (torque 140 Nm) (Figure 7).

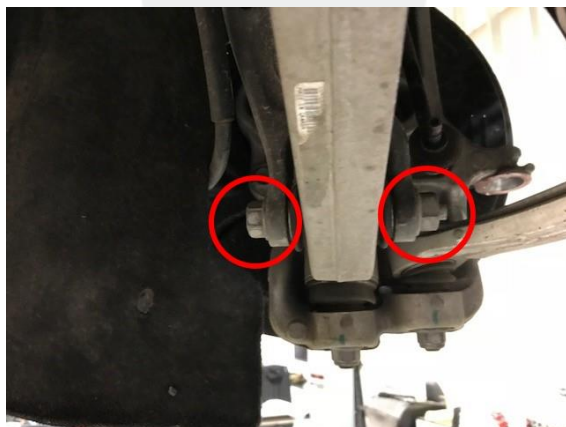


Figure 7

23. Remove and discard the nut that attaches the RH tie rod end to the RH front knuckle (torque 103 Nm), and then swing the tie rod end away from the knuckle (Figure 8).



Figure 8

24. Remove and discard the nut that attaches the stabilizer bar to the stabilizer bar end link (torque 70 Nm), and then swing the end link away from the stabilizer bar (Figure 9).



Figure 9

25. Remove the RH front halfshaft from the RH front hub assembly.
26. Use the cable axle remover to remove the RH front halfshaft from the RH front jackshaft (Figure 10).



Figure 10

27. Repeat steps 16 to 24 on the LH front halfshaft
28. Use the cable axle remover to remove the LH front halfshaft from the front drive unit.

29. Support the front drive unit with an underhoist stand (Figure 11).

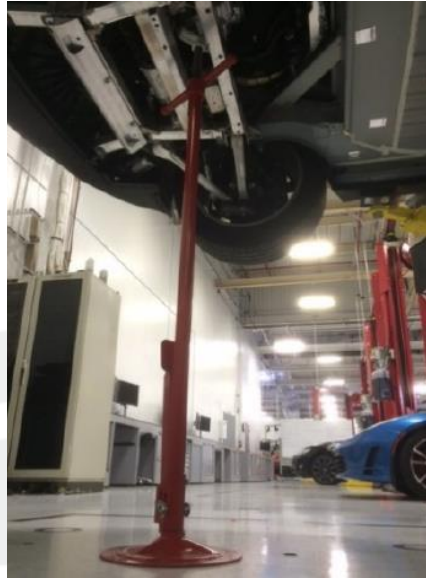


Figure 11

30. Remove and discard the bolts that attach the LH front drive unit clevis mount to the LH front rail (torque 65 Nm) (Figure 12).

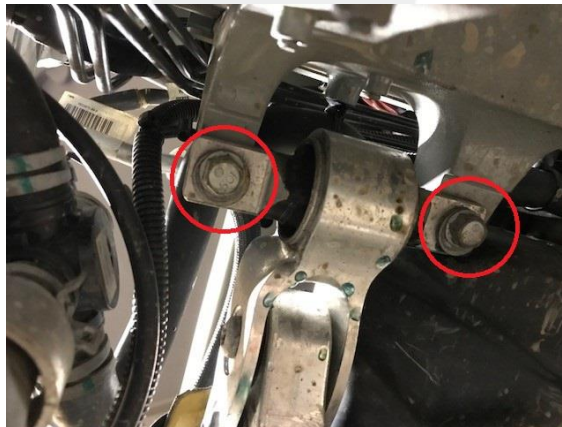


Figure 12

31. Remove and discard the bolts and patched nut plate that attach the LH front drive unit clevis mount to the isolator (torque 50 Nm) (Figure 13), and then remove the clevis mount from the vehicle.

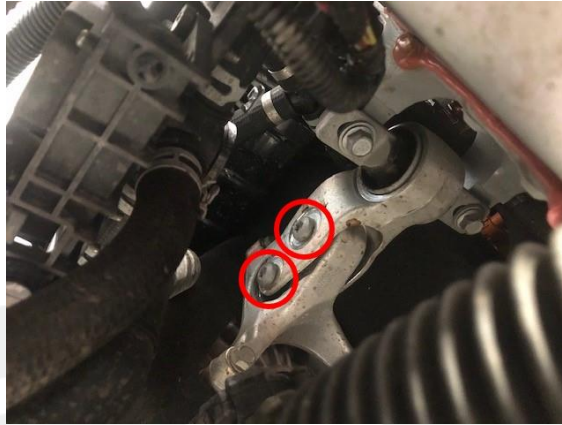


Figure 13

32. Position the new LH front drive unit clevis mount on the vehicle, and then install the new bolts that attach the clevis mount to the isolator (torque 50 Nm) (Figure 13).

NOTE: The flat side of the clevis mount (Figure 14, circled) faces the rear of the vehicle.



Figure 14

33. Install the new bolts that attach the clevis mount to the LH front rail (torque 65 Nm) (Figure 12).

TIP: Adjust the underhoist stand to help align the mounting holes.

34. Perform steps 26 to 17 in reverse sequence on the LH side of the vehicle.

NOTE: When performing step 22, only loosely install the bolt and nut that attach the LH front shock absorber to the LH front lower aft link (Figure 7).

35. Perform steps 26 to 17 in reverse sequence on the RH side of the vehicle.

NOTE: When performing step 22, only loosely install the bolt and nut that attach the RH front shock absorber to the RH front lower aft link (Figure 7).

36. Position the LH and RH front wheels on the vehicle, and then loosely install the lug nuts.
37. Position the lower intermediate shaft on the steering rack, and then install the bolt that attaches the shaft to the steering rack (torque 30 Nm) (Figure 1).
38. Install the front skidplate (refer to Service Manual procedure 30011002).
39. Lower the vehicle until the wheels are touching the ground, and then tighten the LH and RH front wheel lugnuts (torque 175 Nm).
40. Install the nuts and new washers that attach the LH and RH front halfshafts to the front hub assemblies (torque 245 Nm).
41. Install the LH and RH front wheel center caps and lug nut covers.
42. Refill the front gearbox fluid (refer to Service Manual procedure 39300102).
43. Reconnect 12V power (refer to Service Manual procedure 17010200).
44. If equipped, install the HEPA filter housing (refer to Service Manual procedure 18100202).
45. Install the front underhood apron (refer to Service Manual procedure 12251002).
46. If equipped, install the HEPA filter inlet duct (refer to Service Manual procedure 18105001).
47. If equipped, install the HEPA filter outlet duct (refer to Service Manual procedure 18105202).
48. Install the LH and RH underhood aprons (refer to Service Manual procedure 12251202).
49. Install the rear underhood apron (refer to Service Manual procedure 12251102).
50. Use the touchscreen to calibrate the LH and RH rear doors (**Model X only**).
51. Set the vehicle to Standard height (**air suspension only**).
52. Move the vehicle to a 4 post lift and chock the wheels.
53. Tighten the bolts and nuts that attach the LH and RH front shock absorbers to the LH and RH front lower aft links (torque 140 Nm) (Figure 7), and then mark each nut with a paint pen.
54. Perform a test drive where safe, quickly accelerating to highway speeds.

Affected VIN(s) Affected Model S and Model X vehicles built between approximately December 15, 2013 and May 15, 2019.

NOTE: This is a simplified summary of the affected VIN list. Refer to the VIN/Bulletin Tracker or Customer/Vehicle profile to determine applicability of this bulletin for a particular vehicle.

For feedback on the accuracy of this document, email ServiceBulletinFeedback@tesla.com.