

REFERENCE:	Nova Bus Manuals
SECTION:	09: Engine Cooling Package
RS N°:	MQR 7621-1376
EFFECTIVE IN PROD.:	N/A

APPLICATION DEADLINE: 2020JN24
CLAIM REFERENCE NUMBER: WB-4334

SUBJECT:	Low level coolant sensor
JUSTIFICATION:	Critical low coolant level sensor N84555 may under certain conditions cause a false code of critical low coolant level.

LEVEL	DESCRIPTION	DIRECT CHARGES		TIME
		LABOUR	MATERIAL	
1	Replace the critical low coolant level sensor N84555 by a N92287 sensor	Nova Bus	Nova Bus	30 min
2	–	–	–	–

MATERIAL

QTY	PART N°	REV.	DESCRIPTION	REPLACES PART N°
LEVEL 1				
1	N92287	–	Coolant sensor	N84555
LEVEL 2				
–	–	–	–	–

Materials will be available within 28 days once your order has been placed. To order, please contact Prevost Parts by phone at 1-800-771-6682, by fax at 1-888-668-2555 or by email at prevostparts.commandes@volvo.com. Specify document number, quantity of parts required and shipping address.

DISPOSAL OF PARTS

REMOVED PARTS ARE:	DISCARDED *	RETAINED	* Dispose of the unused parts and the defective parts in accordance with local environmental standards in effect.
	Yes	–	

REVISION HISTORY

REV.	DATE	CHANGE DESCRIPTION	WRITTEN BY
NR	2019MA28	Initial release	Luc Carignan

APPROVED BY:

PAGE 1 OF 6

CLIENT	ORDER	ROAD NUMBER		VIN (2NVY/4RKY...)		QTY
		FROM	TO	FROM	TO	
BC Transit - BCT - British Columbia	L858	9447	9481	L82JXE3001401	L82J5F3001436	35
BC Transit - BCT - British Columbia	L891	—	—	L82J5F3001565	L82J2F3001569	5
BC Transit - BCT - British Columbia	LA16	6000	6029	L82J3H9776217	L82J4H9776307	30
MTD - Santa Barbara, California	L730	—	—	S92J8E4500567	S92J1E4500569	3
NFTA - Buffalo, New York	L877	1501	1501	L82K0F4500984	L82K0F4500984	1
NFTA - Buffalo, New York	L897	1502	1520	L82K1F4501223	L82K1G9775008	19
NFTA - Buffalo, New York	LA30	1717	1724	L82J8H9775838	L82J5H9775845	8
Regina - Saskatchewan	L776	663	669	L82U4D3001001	L82U5D3001007	7
Regina - Saskatchewan	L807	671	685	L82J8E3001137	L82J2E3001151	15
Regina - Saskatchewan	L892	686	691	L82J5F3001484	L82J4F3001489	6
Regina - Saskatchewan	L949	692	696	L82J3G3750205	L82J0G3750209	5
Regina - Saskatchewan	L992	-	-	L82J6G3750294	L82J3G3750298	5
Regina - Saskatchewan	LA44	814	829	L82J0H3750776	L82J7H3750791	16
Regina - Saskatchewan	LB16	830	830	L82J0H3750793	L82J0H3750793	1
Regina - Saskatchewan	LB17	831	831	L82J2H3750794	L82J2H3750794	1
Regina - Saskatchewan	LB18	832	832	L82J4H3750795	L82J4H3750795	1

**WARNING**

FOLLOW YOUR INTERNAL SAFETY PROCEDURES.

PROCEDURE

- 1.1. Open the battery compartment access and turn the battery disconnect switch to the **OFF** position. See Figure 1.



Figure 1 - Battery Disconnect Switch

- 1.2. Open the rear engine and radiator access doors. See Figure 2.



Figure 2 - Rear Engine and Radiator Access Door

- 1.3. Drain enough coolant to empty the surge tank. See Figure 3.
- 1.4. Disconnect and remove the critical low level coolant sensor. See Figure 3.

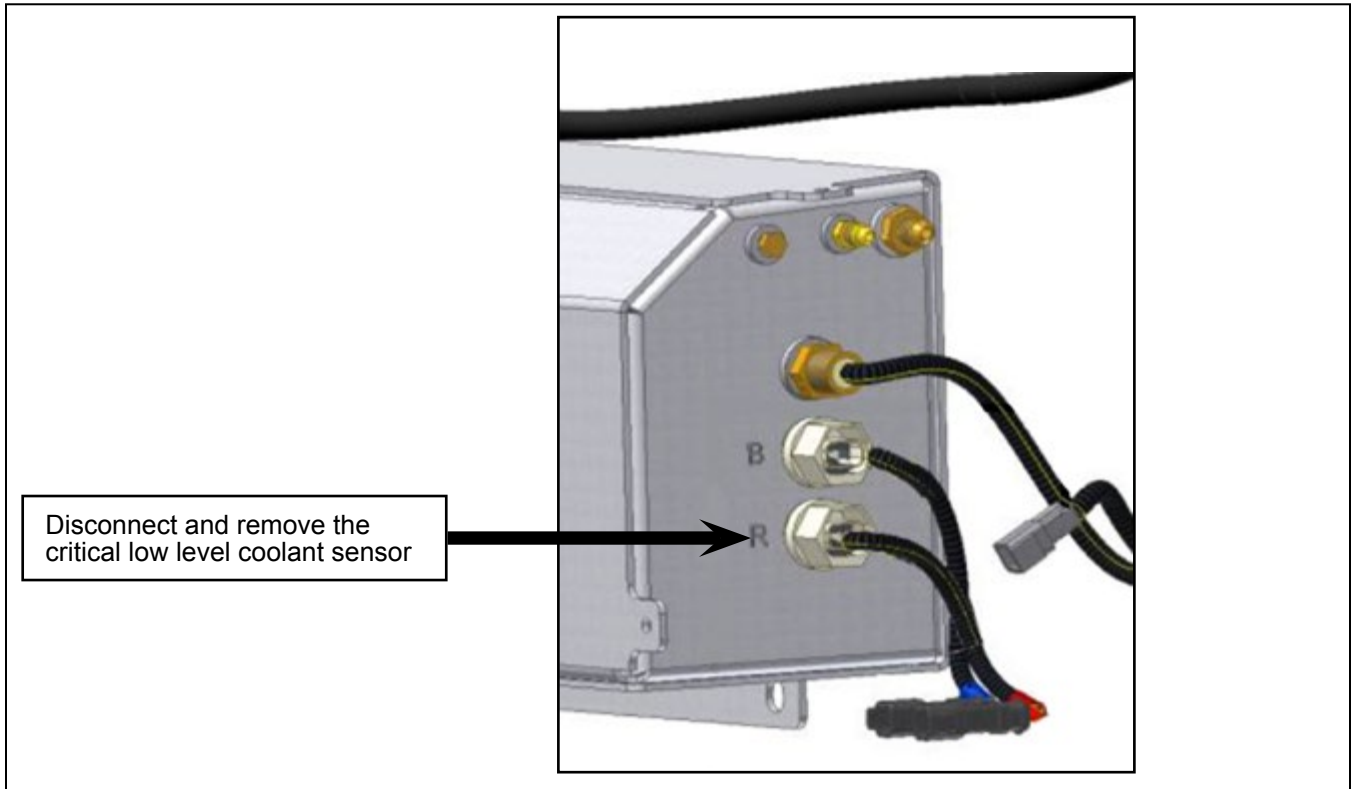


Figure 3 - Surge Tank with Original Sensor

- 1.5. Loosen the compression ring and position the notch of the new coolant sensor N92287 downward (1a) (float downward). See Figure 4.
- 1.6. Insert the N92287 coolant sensor in the surge tank and tighten the attaching nut (1). See Figure 4 for torque value.
- 1.7. Turn the tube to position the notch upward (2a). See Figure 4.
- 1.8. Hand tighten the compression nut while maintaining the notch upward. See Figure 4.
- 1.9. With a pair of pliers maintain the notch upward while turning the compression nut one complete turn, using a wrench.

**CAUTION**

Do not overtighten the compression nut as the compression ferrule is made of Delrin. Overtightening the Delrin ferrule may result in coolant leaks.

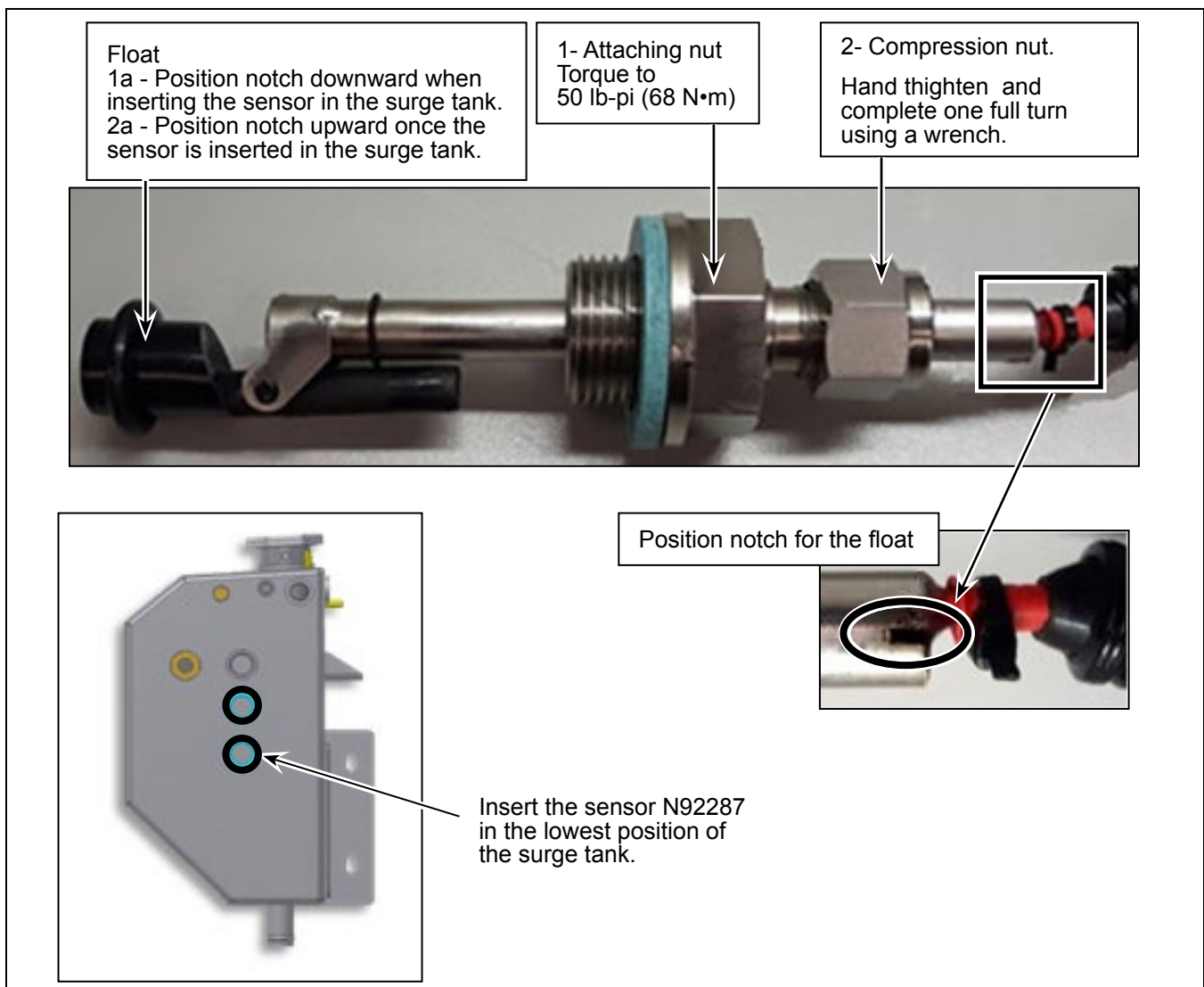


Figure 4 - N92287 Sensor Installation Procedure

- 1.10. Connect the coolant sensor.
- 1.11. Fill the surge tank with the reserved coolant.

