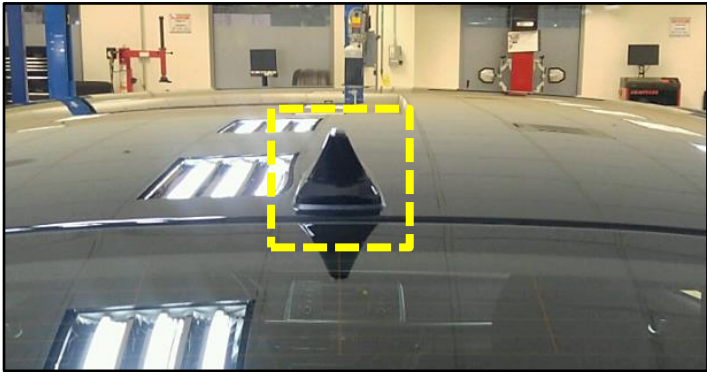
	GROUP ELE	MODEL 2016-2017MY Optima (JFa)
	NUMBER 170	DATE May 2019
TECHNICAL SERVICE BULLETIN		
SUBJECT: ANTENNA CAP REPLACEMENT		

This bulletin provides the procedure to replace the antenna cover that is loose and/or has separated from the antenna base on some 2016-2017MY Optima (JFa) vehicles, produced from August 25, 2015 through May 2, 2017. Follow the procedure outlined in this bulletin to repair the customer concern of missing or loose antenna cover.

*** NOTICE**

The antenna assembly does not need to be replaced for a missing cover; additionally dealers will need to provide a VIN when submitting the parts order due to limited launch supplies. Antenna covers are color specific and should not be ordered for stocking purposes.



*** NOTICE**

VINs that start with 5XX are designated Optima (JFa) and produced in the United States. This TSB applies to Optima (JFa) that is produced in United States only.

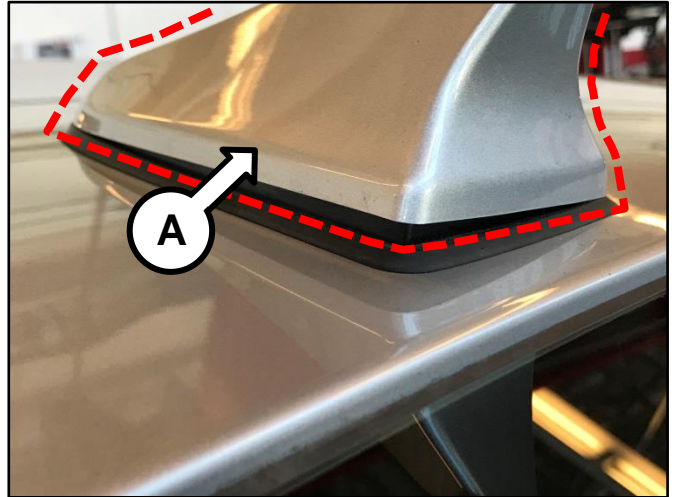
File Under: <Electrical>

-
- Circulate To: General Manager Service Manager Parts Manager
 Service Advisors Technicians Body Shop Manager Fleet Repair

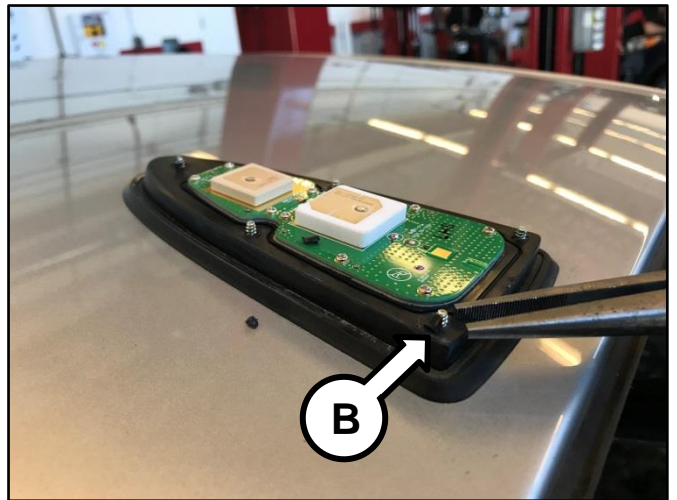
Service Procedure:

1. Carefully separate the antenna cap (A) from the base when broken or loose.

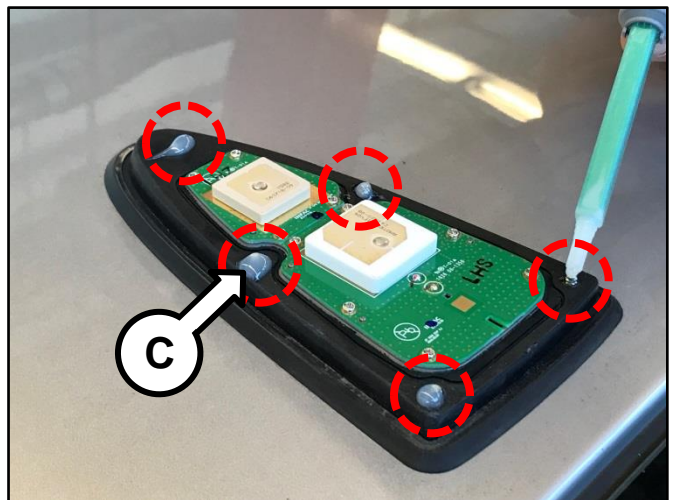
Note: If the antenna cover is missing, confirm proper antenna operation. If antenna is operating properly, proceed to step 2.



2. Remove any remaining plastic remnants from the screws at the antenna base (B) and then using regulated shop air, gently blow and clean the rubber padding of the base.



3. Using the adhesive kit provided to your dealer, apply a small amount of adhesive over the five screws (C) at the antenna base, enough to cover the screw holes.



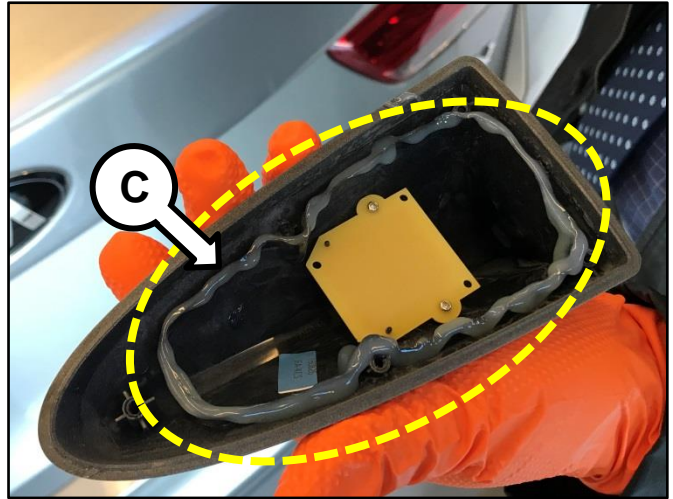
SUBJECT:

ANTENNA CAP REPLACEMENT

4. Apply a continuous line of adhesive (C) onto the antenna cap channel as outlined in photo, to ensure proper sealing.

*** NOTICE**

Do not use too much silicone epoxy or the material may squeeze out during the cover installation.



5. Carefully align and place the antenna cap over the antenna base. Firmly hold the cap onto the base for fifteen (15) seconds.



6. Wipe off any excess adhesive and ensure the antenna and surrounding areas are clean.
7. Remove adhesive tip and discard. Replace the original adhesive cap back onto adhesive tube for future use. Store the tube in a sealed zip-lock bag or container.
8. Verify proper operation of the radio.



SUBJECT:

ANTENNA CAP REPLACEMENT


AFFECTED VEHICLE RANGE:

Model	Production Date
Optima (JFa)	August 25, 2015 to May 2, 2017

REQUIRED TOOL:

Tool Name	Tool Number	Figure	Comments
Loctite Adhesive & Nozzle Kit	UM019 CH150		Auto-shipped to Dealers. Kit includes 1 Adhesive Tube and 4 Nozzles. Additional orders can be made through Kia Chemicals.
Adhesive Gun	UM019 CH151		Auto-shipped to Dealers.

REQUIRED PARTS:

Description	Part Number	Color	Figure
Antenna Cover	96219D5000ABTQK	Platinum Graphite	
	96219D5000EBQK	Ebony Black	
	96219D5000IMQK	Titanium	
	96219D5000KCSQK	Sparkling Silver	
	96219D5000M2RQK	Sangria	
	96219D5000M5GQK	Moss Gray	
	96219D5000M5UQK	Horizon Blue	
	96219D5000SWPQK	Snow White Pearl	
	96219D5000TR3QK	Remington Red	

WARRANTY INFORMATION:

N Code: M65 C Code: ZZ2

Claim Type	Causal P/N	Qty.	Repair Description	Labor Op Code	Op Time	Replacement P/N	Qty.
W	96210 D5550	0	Antenna Cover Replacement	96210F05	0.3 M/H	See Required Parts Table	1

Note: Use sublet code 'X1' with a maximum allowed amount of \$12.25 for the "Adhesive Kit". One tube of the "Adhesive Kit" will cover 4 vehicles.