

Completely read instructions before starting. Use safety glasses and observe all safety precautions.

Tools Required:

Razor Knife

Screw Gun w/#2 Square & Phillips bit

Putty Scraper

Caulk Gun

Optional 90° Screw Gun

Stripe Squeegee

Staple Gun (Short Staples)

Parts Required:

2- Wing Walls 1EA. RH / LH also make sure note color (Champagne, Oyster, White etc.)

2- 3' Pieces P-seal (Note color of panels)

2- 5' Pieces Eternabond Tape

1- Geoseal (match color of panels)

Optional Decals depending on make of coach

Phillips Countersink head screws Self Drilling for wing wall (only need to replace ones not reusable)

Phillips/Square Countersink head for wing wall to sidewall (only need to replace ones not reusable)

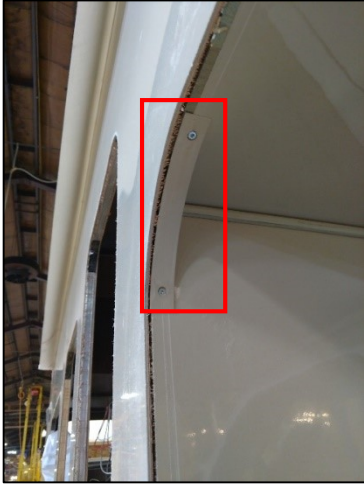
Roll of Putty Tape



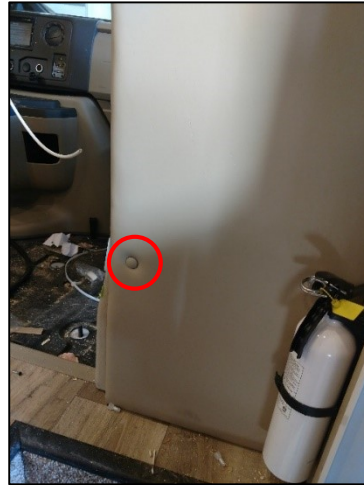
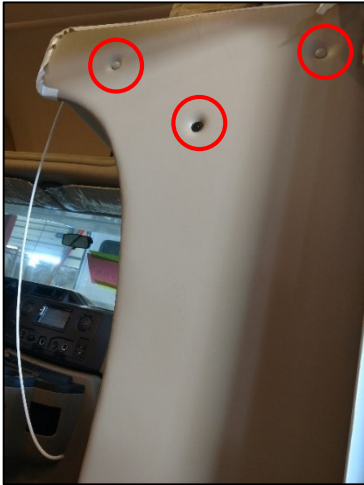
1. Park coach in an area to access both front sides at driver and passenger door area.
2. Remove screw from trim on bottom exterior of wing wall that secures the gimp.
3. Pull the gimp out of the vertical pre bend and forward on cabover approx 4 feet.



4. Remove the screws from the pre bend up the vertical wall and forward on cabover.
5. Use a razor knife and score the silicone seal along the pre bend.
6. Pull pre bend off and push aside using caution not to kink so it can be reinstalled.

Class C Wing Wall – Remove and Replace

7. Remove 2 screws securing radius block and remove the radius block.
8. Remove screws in wing wall that secure it to the sidewall.



9. On the padded interior panels of the wing walls inside the coach, remove the screws found under the button covers.

Note: Depending on floor plan, a 90° driver may be required. Sofa or dinette does not need removed.



10. Remove staples/screws in the vinyl wrap attached to the interior edge of the wing wall. Then remove screws from the wing wall where it is attached to the overhead bunk and down along the back of the cab.

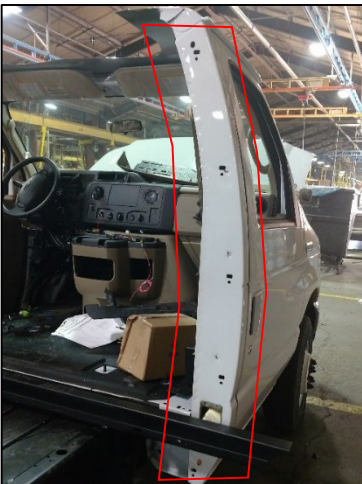
Note: Don't miss the screw under the floor line.

Class C Wing Wall – Remove and Replace

11. Go outside and cut silicone at cab to wing wall with a razor knife. The wing wall should now be able to pop out. Use caution not to break the side wall's outer lip.

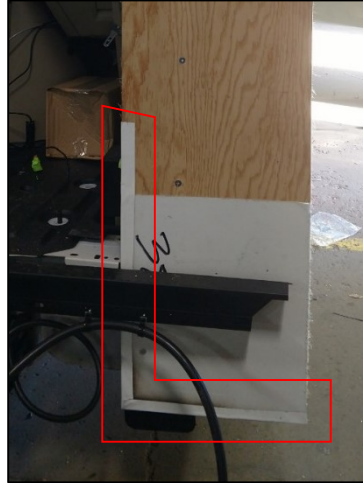
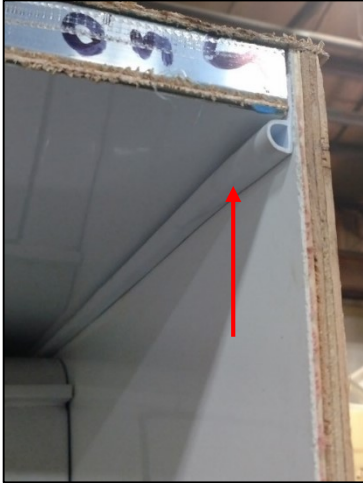


12. The driver side wing wall requires a notch out of the top above the grommet to allow the removal of wiring. Do not cut these wires.



13. Clean off the side walls, trim, back of the cab, and the underside of the overhead bunk. Then prep the back of the cab for a new wing wall by first installing a strip of putty tape where screws will go in.
14. Prep the new wing wall for installation, making sure the full back side, sides and bottom are covered with anti-wick. Trim any rough edges.

Class C Wing Wall – Remove and Replace



15. Install the P-seal on the top front edge of the overhead bunk.
16. Apply Eternabond along the bottom and interior edges of the wing wall up past the floor line.



17. Slide new panel in place. Ensure lower corners line up and that it is tight against the side wall. Check interior for the wall lining up evenly with the overhead deck panel.



18. Install screws in outside of wing wall to side wall.
19. Install screws in the wing wall into the overhead bunk inside the coach. Make sure the two panels fit tightly together. Down the wing wall into the back of the cap, continue installing screws. Do not let them poke out through the side.

Note: Don't miss the screw under the floor line.

Class C Wing Wall – Remove and Replace

20. Wrap interior edge trim back over panel and staple with short staples. Then install the padded paneling with screws with button covers over the screw heads.



21. Apply Eternabond on corner before installing pre bend. Install pre bend by pushing it tightly in place over the overhead and down the corner of the sidewall and wing wall installing screws along the way. (Use new screws if old are rusty)

22. Install gimp back into the pre bend. Install lower trim on bottom of wing wall and back over the gimp with a screw to secure.



23. Install new decals on wing wall aligning from cab to sidewall. Geoseal the edges of the pre bend and down the side of the cab to the wing wall.

Note: Some units do not have decals on the wing walls. Geoseal same color as exterior color.