

Date: March 14, 2019

## **CUSTOMER SATISFACTION CAMPAIGN**

**Service Bulletin No.:** 2019-0033

**Product Models Affected:**

World Trans (WT) 2xx Standard Floor (WW)  
World Trans Transit (WTT) 2xx Standard Floor (WW)

Note: Campaign does not include raised (flat) floor products.

---

FORM Rev 2017-0323

**Purpose:**

To add additional sealant to the back side of the wheel well and sidewall skin by the flare to prevent water intrusion to the vehicle interior.

**Tool(s) / Equipment Required:**

3/8" socket or wrench  
Caulking gun

**Part(s) / Material Required:**

<u>Description</u>	<u>Part Number</u>	<u>Quantity</u>
Black Sealant Sika Flex 221	E52628	1/2 tube per bus
Dark Gray Sika Flex 227	E53575	1/2 tube per bus

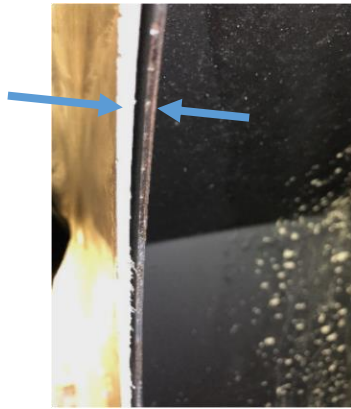
Note: Either one of the above parts/materials may be used.

**Personal Protective Equipment:**

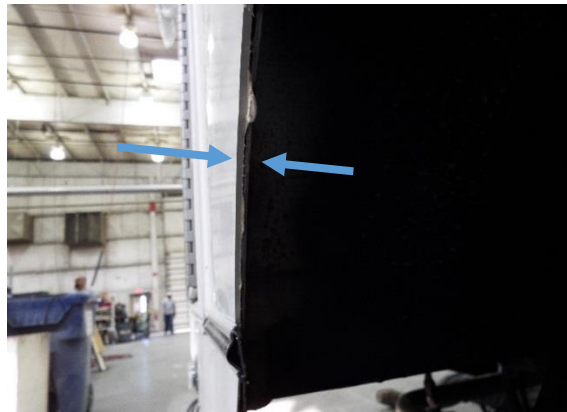
Safety Eye Glasses  
Gloves  
Tape Measure

**Procedure:**

1. Check the Wheel Flare securement, making sure sidewall skin is snug to body. If the gap is greater than 3/16 inch, apply Sikaflex or Sealant to seal the gap. Reference "Visuals" Photo #1.



Gap shown



No Gap shown

Photo #1  
Sidewall skin is sealed to body.

2. Remove passenger side rear mud flap using 3/8" socket or wrench. Reference Photo #2.



Photo #2

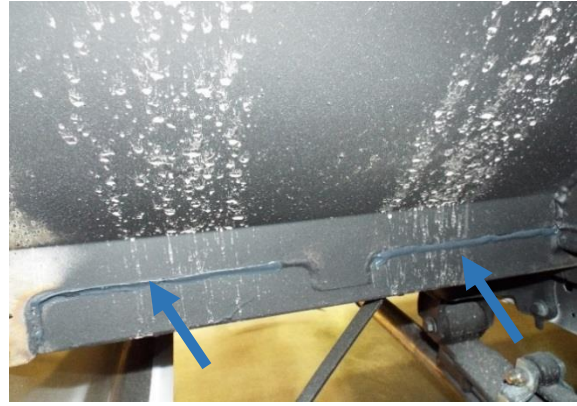
3. Wash out seam, then blow dry. Reference Photo #3.

4. Apply Sika Flex 221 or Sika Flex 227 in seam for sealing. Reference Photo #4.



As built; No Sealant in Wheelwell  
Mud Flap Removed

Photo #3



Sealant Added to Seam

Photo #4

5. Re-install mud flap using existing screws with washers in the exact same holes, reversing the steps for removal.
6. Ensure screws are tightened.
7. Repeat process Step 1 through Step 6 for driver side rework/repair.

**Contact Information:**

Contact Eldorado Customer Service, 1655 Wall Street, Salina, KS 67401; or by calling (785) 827-1033 / (800) 955-9086; or by Email: [bussupport@eldorado-bus.com](mailto:bussupport@eldorado-bus.com); or by Fax: (785) 827-3017.

**Estimate time to repair is 30 minutes.**