



Service Bulletin SB564 Issue 1 - 04.2019

Subject: COMPLIANCE PLATE, COMPLIANCE LABEL and NHTSA LABEL				
Bulletin Number	Models Affected	VIN Range		Markets Affected
564	Street Triple R-LRH Street Triple S Street Triple RS Tiger 800 XCA Tiger 800 XCX Tiger 800 XRX-LRH	From 932467	To 944996	US Market Only
564	Street Triple R Street Triple RS Street Triple S (LAMS) Tiger 800 XCA Tiger 800 XRT Tiger 800 XRX Tiger 800 XRX-LRH	From 932778	To 947306	Australian Market Only
564	Street Triple R Street Triple R-LRH Street Triple RS Street Triple S	From 933140	To 947069	Canadian Market Only

Background Information

Internal investigations have identified that the label known as the compliance plate (in the Australian market), compliance label (in the Canadian market) and the NHTSA label (in the US market) have been printed with the incorrect build date.

Dealers are required to fit a new label as described in the procedures below.

Customer Contact Instructions

Motorcycles in the affected VIN range must be inspected and, if necessary, rectified prior to delivery to the customer, or at the next visit to the dealership.

Identification of Affected Motorcycles

Models listed in the VIN ranges above.

Note:

- Some affected motorcycles listed in the VIN range will have been modified and repaired by Triumph prior to their release from the factory.
- Unmodified motorcycles can be identified by checking the 'VIN Enquiry' on www.triumphonline.net.

Warranty Claim Instructions

Bulletin Number	Fault Code	Repair Code	Description	Repair Allowance	Time
564	039010997	99564	Fit New Label	0.08 hours	

Genuine Parts Information

Notice Number	Part Number	Parts Kit Description	Quantity
564	3930192 - LABEL SET, AUSTRALIAN	Not Applicable	1
564	3930195 - LABEL SET, NHTSA (USA)	Not Applicable	1
564	3930194 - LABEL SET, CANADA	Not Applicable	1

Other Instructions

Once completed, please mark the Service Record Book that the requirements of this bulletin have been complied with.

Before returning the motorcycle to the customer, download the latest calibration to the engine electronic control module, chassis electronic control module (if fitted) and instruments (if applicable) using the current version of the Triumph diagnostic software.

Parts Ordering Instructions

Triumph subsidiary and overseas distributors will supply parts directly to each dealer free of charge.

Genuine Parts Rendered Unusable

No parts to rendered unusable.

Genuine Parts Return Instructions

Not applicable

Replacement Procedure

Note:

- From this point on the compliance plate, compliance label and NHTSA label will be known as the label.

Install the new label following the procedure listed below.

! Warning

Before starting work, ensure the motorcycle is stabilised and adequately supported. This will help prevent it from falling and causing injury to the operator or damage to the motorcycle.

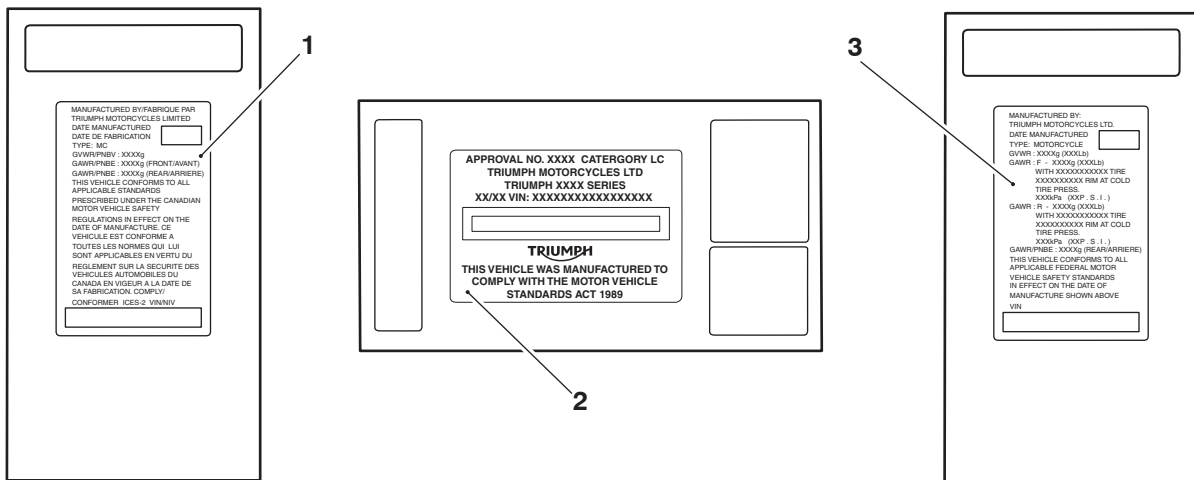
! Caution

The label is supplied with the correct build date of the motorcycle to which it relates. Ensure the part number on the Label Set backing paper matches the part number listed in the Genuine Parts Information table of this Service Bulletin. Also ensure the VIN on the label matches the VIN on the original label. Once the label has been applied, it cannot be removed without irreparable damage.

Location and Installation of the Label

Note:

- The surface to which the label is affixed must be clean and dry to ensure that the adhesive has a sound base to adhere to. Use panel wipe for this purpose.
- The label set will only have text on the new label. The remaining labels are blank as shown in the illustration below.



- 1. Compliance Label, Canadian market**
- 2. Compliance Plate, Australian market**
- 3. NHTSA Label, US market**

For location and installation of the label refer to Appendix A - Label Location and Installation, page 4.

Circulation

Initial and date when read and return to central file holder

Service Manager	Parts Manager	Sales Manager	Workshop Supervisor	Technician 1	Technician 2

Appendix A

Notice

Ensure the correct label is fitted to the motorcycle. Fitting the incorrect label will not have the correct information for the motorcycle which may contravene local or national laws in your market, territory or country.

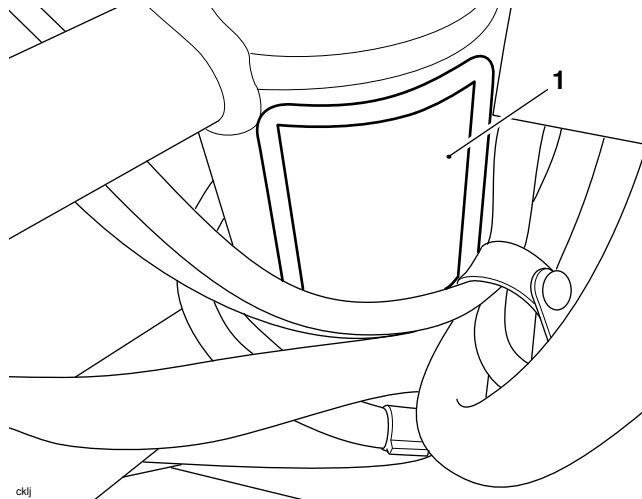
For Australia the compliance plate on label set T3930192 is to be used.

For Canada the compliance label on label set T3930194 is to be used.

For US the NHTSA label on label set T3930195 is to be used.

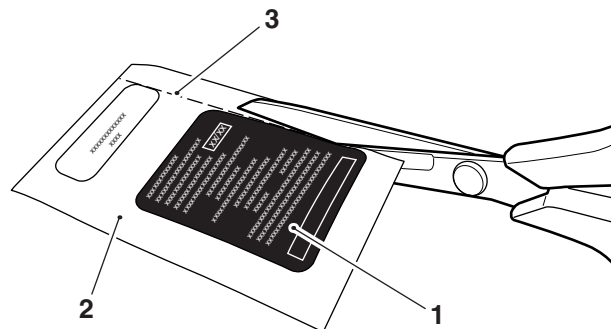
Tiger 800 XCA, Tiger 800 XCX, Tiger 800 XRT, Tiger 800 XRX and Tiger 800 XRX-LRH

The location of the original label is on the left hand side of the headstock.



1. Label location

1. Trim the backing paper from the right hand side of the label.

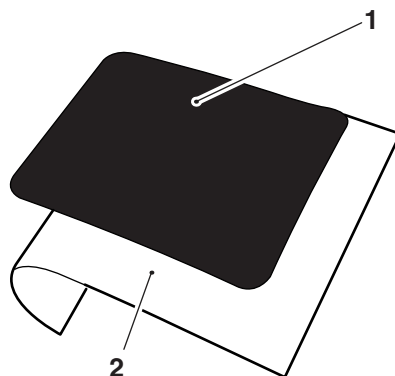


1. Label (NHTSA label shown)

2. Backing paper

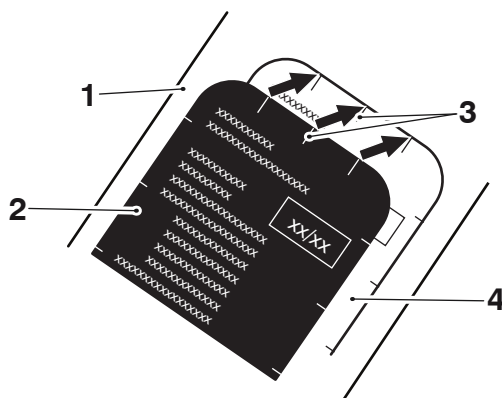
3. Cut line

-
- Partially roll back the backing paper to expose the adhesive at the top of the label.



- Label**
- Backing paper**

- Using panel wipe, remove any dirt or dust on or around the area of the original label.
- Rotate the steering onto full left hand lock and reposition the harnesses to gain access to the original label.
- Taking the label through the gap between the front forks and the headstock, carefully align the top edge of the new label with the top edge of the original label. Ensure the three vertical lines are also aligned.

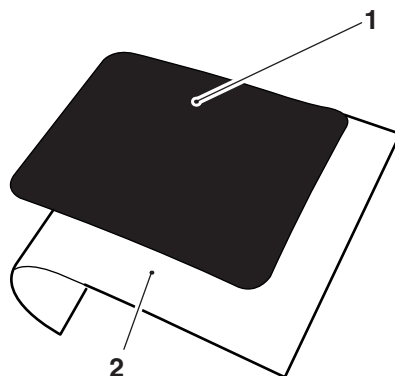


clho_1

- Headstock**
- New label**
- Vertical lines**
- Original label (shown in white for clarity)**

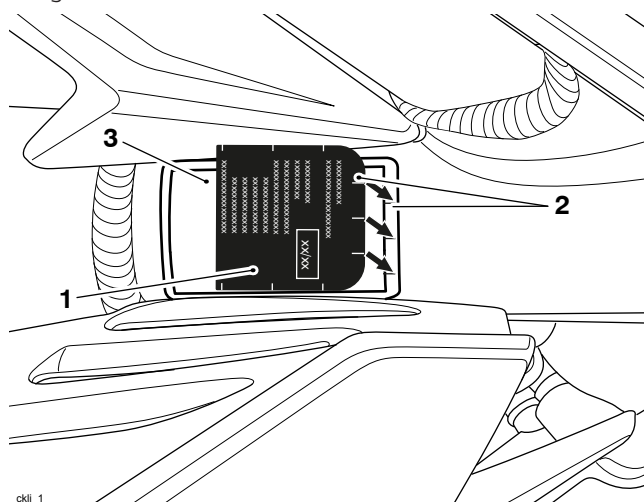
- Once the label edge is aligned, accurately affix the top part of the label and gradually pull away the backing paper then gently affix the rest of the label.
- Once the whole label is accurately affixed, firmly rub down to remove any air bubbles.

-
- Partially roll back the backing paper to expose the adhesive at the top of the label.



- Label**
- Backing paper**

- Using panel wipe, remove any dirt or dust on or around the area of the original label.
- Carefully align the top edge of the new label with the top edge of the original label. Ensure the three horizontal lines are also aligned.



- New label**
- Horizontal lines**
- Original label (shown in white for clarity)**

- Once the label edge is aligned, accurately affix the top part of the label and gradually pull away the backing paper then gently affix the rest of the label.
- Once the whole label is accurately affixed, firmly rub down to remove any air bubbles.