



SERVICE BULLETIN

| | | |
|-----------------------------|-------------------------|-------------------------|
| Classification: EL19-005 | Reference: NTB19-033 | Date: April 15, 2019 |
|-----------------------------|-------------------------|-------------------------|

INTELLIGENT CRUISE CONTROL INOPERATIVE AND AEB/FEB WARNING LIGHT ON OR RADAR OBSTRUCTION MESSAGE DISPLAYED WITH DTC C1A16

- APPLIED VEHICLES:** All Nissan vehicles equipped with ICC distance sensor (Special repair procedure for vehicles in Table A)
- APPLIED SYSTEM:** Intelligent Cruise Control (ICC) or Automatic Emergency Braking (AEB) or Forward Emergency Braking (FEB)

IF YOU CONFIRM

- The customer states that the ICC stopped working while driving,
- Or
- The customer states that the AEB/FEB warning light is on, or turned on, while driving (see Figure 1),
- Or
- The message “Unavailable Front Radar Obstruction” was displayed while driving (see Figure 1).
- And
- DTC C1A16 or C1A16-97 is the **ONLY** DTC stored.

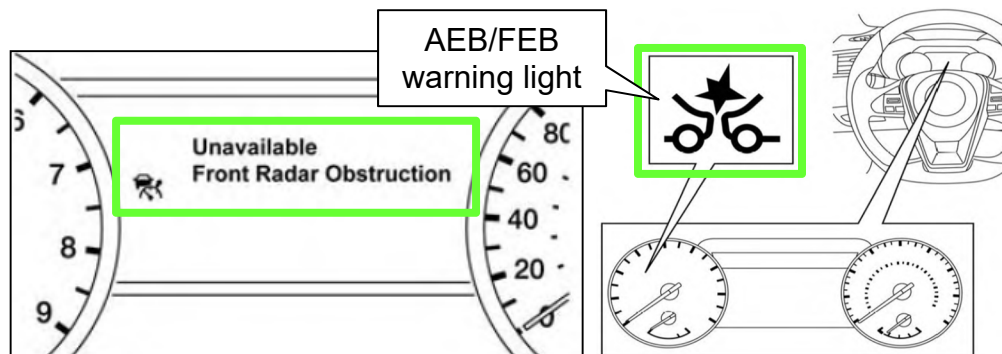


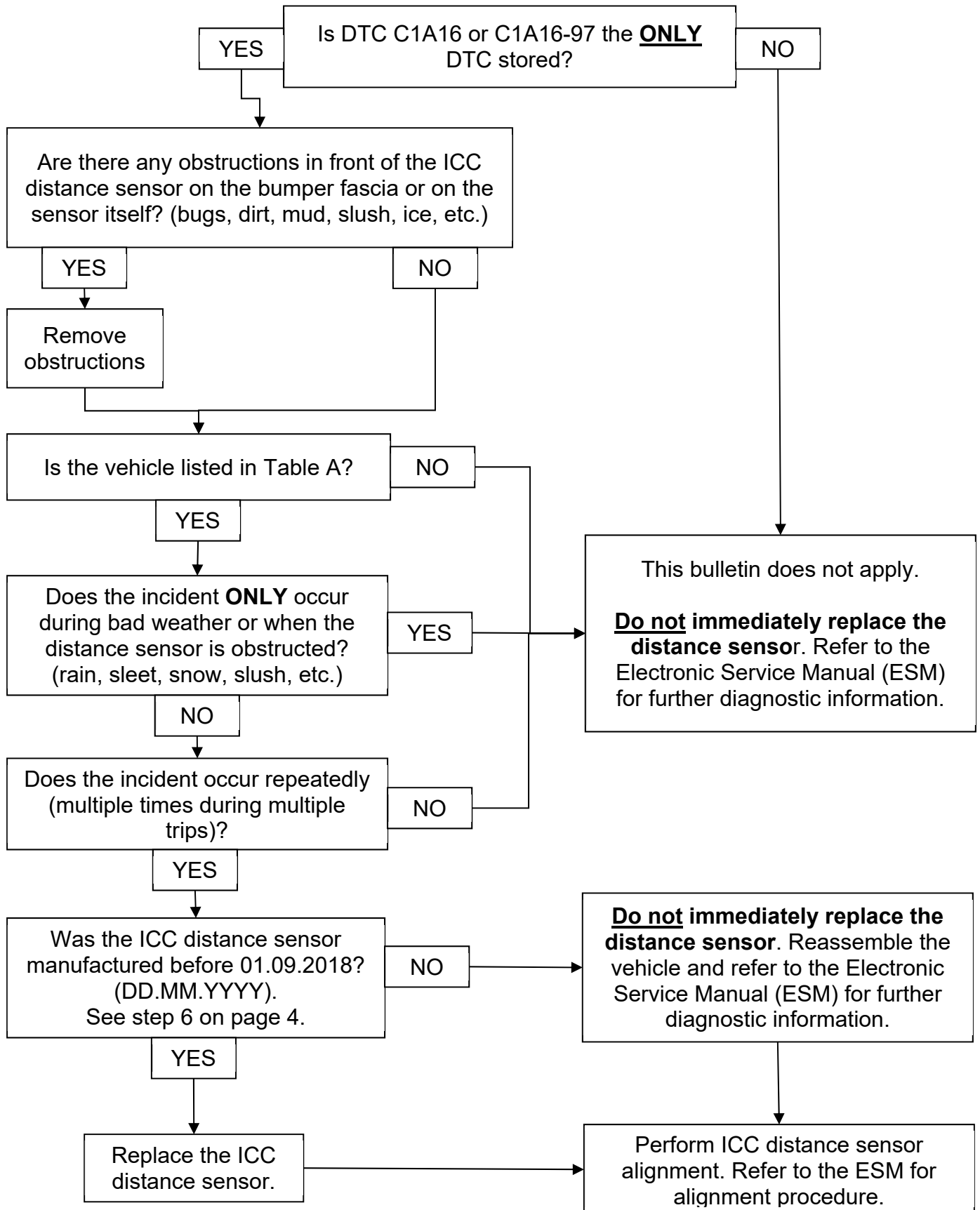
Figure 1

ACTION

Refer to the Flow Chart on the next page.

Nissan Bulletins are intended for use by qualified technicians, not 'do-it-yourselfers'. Qualified technicians are properly trained individuals who have the equipment, tools, safety instruction, and know-how to do a job properly and safely. NOTE: If you believe that a described condition may apply to a particular vehicle, DO NOT assume that it does. See your Nissan dealer to determine if this applies to your vehicle.

Flow Chart



SERVICE PROCEDURE

1. Is DTC C1A16 or C1A16-97 the **ONLY** DTC stored?
 - **YES:** Continue to step 2.
 - **NO:** This bulletin does not apply. **Do not immediately replace the distance sensor.** Refer to the ESM for further diagnostic information.
2. Are there are any obstructions in front of the ICC distance sensor?

NOTE: This can include, but is not limited to, bugs, dirt, mud, slush, ice, etc.

 - **YES:** Remove the obstruction and then proceed to step 3.
 - **NO:** Proceed to step 3.
3. Is the vehicle listed in Table A?
 - **YES:** Continue to step 4.
 - **NO:** This bulletin does not apply. **Do not immediately replace the distance sensor.** Refer to the ESM for further diagnostic information.

Table A

| |
|---|
| 2016-2018 Maxima |
| 2016-2018 Altima |
| 2016-2019 Sentra built before 12/2018 |
| 2015-2018 Murano |
| 2016-2017 Murano Hybrid |
| 2017-2019 Pathfinder built before 11/2018 |
| 2018 Kicks |

4. Does the incident **ONLY** occur during bad weather?

NOTE: This can include, but is not limited to, rain, sleet, snow, slush, etc.

 - **YES:** This bulletin does not apply. **Do not immediately replace the distance sensor.** Refer to the ESM for further diagnostic information.
 - **NO:** Proceed to step 5.
5. Does the incident occur repeatedly (multiple times during multiple trips)?
 - **YES:** Proceed to step 6.
 - **NO:** This bulletin does not apply. **Do not immediately replace the distance sensor.** Refer to the ESM for further diagnostic information.

6. Locate and then write down the ICC distance sensor manufacturing date code (see Figure 2).

NOTE: In some cases the ICC distance sensor may need to be removed from the vehicle to see the date code. If so, refer to ESM for ICC distance sensor removal: **CRUISE CONTROL & DRIVER ASSISTANCE > DRIVER ASSISTANCE SYSTEM > DRIVER ASSISTANCE SYSTEM > REMOVAL AND INSTALLATION > ICC SENSOR (or DISTANCE SENSOR).**

Decoding date code:

- The date code will be displayed as **DD.MM.YYYY** on the back side of the ICC distance sensor.
- A date code of **01.09.2018** translates to the 1st day of the 9th month of **2018**, or September 1, 2018

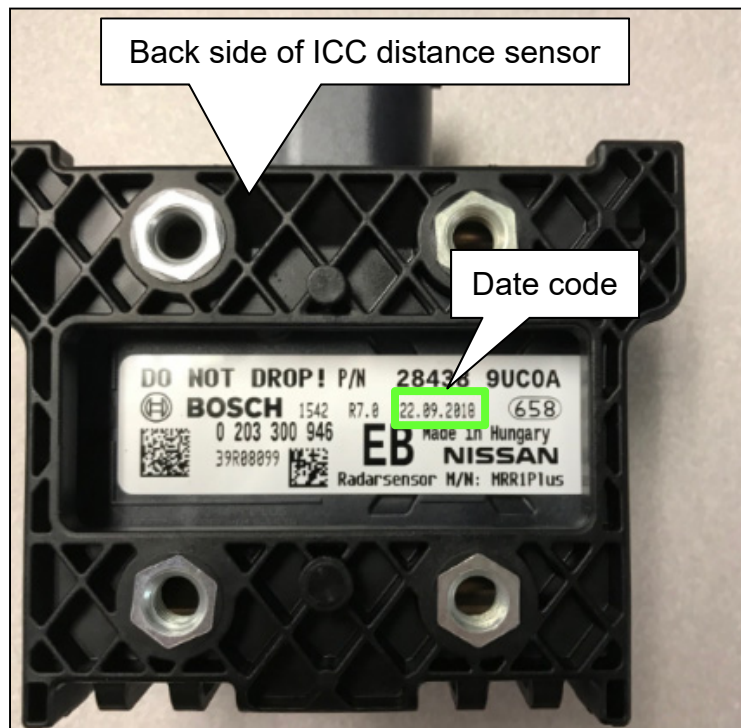


Figure 2

7. Is the date of manufacture on the ICC distance sensor before **01.09.2018**?

- **YES:** Proceed to step 8.
- **NO:** Re-install the ICC distance sensor in the reverse order of disassembly, and then proceed to step 9.

IMPORTANT: The nuts and bolts of the ICC distance sensor, and its bracket, must be torqued in a specific sequence.

- Refer to the ESM for ICC distance sensor installation: **CRUISE CONTROL & DRIVER ASSISTANCE > DRIVER ASSISTANCE SYSTEM > DRIVER ASSISTANCE SYSTEM > REMOVAL AND INSTALLATION > ICC SENSOR (or DISTANCE SENSOR).**

8. Install a new ICC distance sensor from the Parts Information section on page 5.

IMPORTANT: The nuts and bolts of the ICC distance sensor, and its bracket, must be torqued in a specific sequence.

- Refer to the ESM for ICC distance sensor installation: **CRUISE CONTROL & DRIVER ASSISTANCE > DRIVER ASSISTANCE SYSTEM > DRIVER ASSISTANCE SYSTEM > REMOVAL AND INSTALLATION > ICC SENSOR (or DISTANCE SENSOR).**

9. Perform distance sensor alignment.

- Refer to the ESM for distance sensor alignment: **BRAKES > BRAKE CONTROL SYSTEM > AUTOMATIC EMERGENCY BRAKING > BASIC INSPECTION > ADDITIONAL SERVICE WHEN REPLACING ICC SENSOR (or DISTANCE SENSOR).**

PARTS INFORMATION

| DESCRIPTION | PART NUMBER | QUANTITY |
|---|-------------|----------|
| SENSOR UNIT-DISTANCE (ICC distance sensor) | (1) | 1 |

(1) Refer to the Electronic Parts Catalog (EPC) or equivalent for the correct part number.

CLAIMS INFORMATION

Submit a Primary Part (PP) type line claim using the following claims coding:

| DESCRIPTION | PFP | OP CODE | SYM | DIA | FRT |
|---|-----|---------|-----|-----|-----|
| Replace SENSOR UNIT-DISTANCE (ICC Distance Sensor) | (1) | RD45AA | HC | 32 | (2) |

(1) Reference the Electronic Parts Catalog (EPC), and use the Distance Sensor as the Primary Failed Part (PFP).

(2) Reference the current Nissan Warranty Flat Rate Manual and use the indicated Flat Rate Time (FRT).

Claims Information continues on page 6.

OR

Submit a Primary Part (PP) type line claim using the following claims coding:

| DESCRIPTION | PFP | OP CODE | SYM | DIA | FRT |
|--|-----|---------|-----|-----|-----|
| R&I, and Re-Install (ICC Distance Sensor) Maxima 2016-2018 | (1) | RX8DAA | HC | 32 | 1.4 |
| Pathfinder 2017-2019 built before 11/2018 | | | | | 1.4 |
| Sentra built before 12/2018 | | | | | 1.2 |
| Altima 2016-2018 | | | | | 1.6 |
| Kicks 2018 | | | | | 0.8 |
| Murano 2015-2018 including Hybrid 2016-2017 | | | | | 1.8 |

- (1) Reference the Electronic Parts Catalog (EPC), and use the Distance Sensor as the Primary Failed Part (PFP).
- (2) Reference the current Nissan Warranty Flat Rate Manual and use the indicated Flat Rate Time (FRT).

OR with AVM

Submit a Primary Part (PP) type line claim using the following claims coding:

| DESCRIPTION | PFP | OP CODE | SYM | DIA | FRT |
|--|-----|---------|-----|-----|-----|
| R&I, and Re-Install (ICC Distance Sensor) Maxima 2016-2018 | (1) | RX8EAA | HC | 32 | 1.8 |
| Pathfinder 2017-2019 built before 11/2018 | | | | | 1.8 |

- (1) Reference the Electronic Parts Catalog (EPC), and use the Distance Sensor as the Primary Failed Part (PFP).
- (2) Reference the current Nissan Warranty Flat Rate Manual and use the indicated Flat Rate Time (FRT).

AMENDMENT HISTORY

| PUBLISHED DATE | REFERENCE | DESCRIPTION |
|----------------|-----------|-----------------------------|
| April 15, 2019 | NTB19-033 | Original bulletin published |