



Ferrari North America

Technical Information

Date: April 2019
 Bulletin #: 2573
 Campaign #:
 Supersedes:
 Section: 10

Subject: Ferrari Premium Program

Please note that the new “**Ferrari Premium**” program will be available from April 2019 for the vehicles indicated in the table below.

Key: definitions of terms used in this Technical Information:

- Preventive service: installation of parts included in specific 'Baskets' (as defined below).
- Scheduled maintenance: scheduled services indicated in the Manufacturer's Warranty Booklet.

What is Ferrari Premium?

The purpose of Ferrari Premium is to provide Ferrari owner customers with a certificate (the “**Certificate**”) confirming that all scheduled maintenance and preventive service procedures required for their vehicle have been carried out correctly and all product campaigns applicable for their vehicle have been implemented, as required by the terms of the Ferrari Premium program.

The certificate is issued to the customer at no cost once the following criteria are met:

1. all preventive service procedures required for the vehicle have been performed;
2. all scheduled maintenance procedures required for the vehicle have been performed;
3. all recall and service campaigns applicable to the vehicle have been implemented.

Ferrari Premium certification allows vehicles to continue to be eligible for the official services offered to Ferrari customers during the first 20 years of life of the vehicle, up to **Classiche** certification.

Applicability of the Ferrari Premium program

The models eligible for the Ferrari Premium initiative are listed in the following table:

Models Eligible for Ferrari Premium Certification		
360 Modena (all versions)	550 Barchetta	612 One to One
F430 (all versions)	575 Maranello	599 GTB Fiorano
456 GT / GTA	575 Superamerica	599 SA Aperta
456 M GT / GTA	612 Scaglietti	599 GTO
550 Maranello	612 Scaglietti Sessanta	Enzo

(see detailed list “Premium-Classiche” attached)



Ferrari North America

Conditions for eligibility for Ferrari Premium program

The Certificate may only be issued to the customer if all of the three conditions described below are met.

1. Preventive service plan completed properly up to current date

The preventive service plan requires the installation of a specific set of spare parts (“Basket”) on the vehicle regarding the following functional systems:

- Fuel and induction system;
- Lubrication system;
- Hydraulic power steering system;
- Braking system.

To facilitate management of the procedures necessary by Authorized Ferrari Dealers and to meet the needs of customers, the procedures of the preventive service plan may be spread out over a number of sessions.

2. Scheduled maintenance plan completed properly up to current date

The service procedures required by the scheduled maintenance plan must be carried out at least once every 12 months.

3. All product campaigns (service and recall) applicable for vehicle implemented properly

The certificate may only be released if all the recall campaigns applicable for the vehicle have been implemented.

Issue of Certificate

Customers may access the **MyFerrari** portal and view the status of the three indicators shown in (Fig.1) to track the progress of their request for the certificate in real time. The Certificate may only be issued to the customer once all the conditions described in points 1, 2 and 3 are met. Customers may request the Ferrari Premium Certificate from their dealer of preference (see example of Certificate on following page).



Figure 1



"Ferrari Premium" CERTIFICATE

MODEL _____

CHASSIS NUMBER ZFF.....

YEAR OF PRODUCTION _____

THE MAINTENANCE SCHEDULE DEFINED BY FERRARI FOR ELIGIBILITY FOR THE FERRARI PREMIUM PROGRAM IS UP TO DATE FOR THIS VEHICLE

This document certifies that all the maintenance procedures required by the Ferrari Premium Program for this vehicle have been carried out correctly.

This Ferrari Premium Certificate is issued upon completion of all the aforementioned procedures. This Certificate does not relieve the customer:

- of their obligation to subject the vehicle to all state mandated vehicle inspections conducted by authorized facilities as required by the local road legislation to permit usage of the vehicle on public roads;
- of their obligation to observe the instructions, terms and conditions of the Owner's Manual and/or the Warranty Booklet relative to the vehicle.

Date of issue _____

Vehicle mileage at date of issue: _____ km/miles

Authorized service center: **service center code – name of service center**

Certificate Number _____

Signature of legal representative of Authorized Ferrari Dealer

- This document concerns solely the repair and maintenance procedures performed on the vehicle prior to the date of issue of the Certificate, and is therefore valid solely on the date of issue.*
- This document certifies solely that the procedures required by the Ferrari Premium program have been completed properly and does not imply any extension to the manufacturer's warranty provided by Ferrari. All new spare parts used to replace parts of the vehicle are covered by Ferrari's express limited warranty for 12 months from the date of installation on the vehicle.*
- The correct completion of the procedures required for this Certificate will also facilitate attainment of FERRARI CLASSICHE certification of authenticity, which may only be issued - in response to a request from the customer - once Ferrari has verified that the vehicle meets all the criteria for authenticity necessary for FERRARI CLASSICHE certification.*



12345678900000000000



Ferrari North America

Validity of Certificate

The Certificate is valid on the date of issue. Specifically, the Certificate concerns solely the repair and maintenance procedures carried out on the vehicle prior to the date of issue of the Certificate itself, and is therefore valid solely on the date of issue.

The vehicle will not be eligible for the Certificate if any of the conditions relative to the indicators described above in points **1**, **2** and **3** are not met.

Conditions for exclusion from Ferrari Premium program

The eligibility for the Ferrari Premium program of vehicles which have sustained severe accident damage are subject to verification by Ferrari that the repairs have been made in accordance with Ferrari standards.

As a guideline, the following vehicles are excluded from the Ferrari Premium program:

- vehicles which have been used for racing, whether on a closed circuit or public roads, and subject to track use, unless said use has been in compliance with the rules, instructions and terms specified by Ferrari in the Warranty booklet;
- vehicles used for professional and/or commercial services (e.g., but not limited to long or short term rental);
- vehicles deemed to be in a condition unfit for eligibility by the Ferrari network after thorough technical assessment of the vehicle (including, but not limited to: vehicles which have sustained modifications relative to: body, engine, interior, mechanical parts, etc. or been involved in an accident(s) and filed the relevant inspection).

Activation procedure for Ferrari Premium on NewModis

From **January 21, 2019**, a multimedia course on the usage of the **Ferrari Premium** program will be available from the **Digital Center** of the **Ferrari Academy**. The course will also illustrate the new New Modis sessions relative to the program, to ensure that all Authorized Ferrari Dealer personnel involved will carry out their respective activities correctly. This course will be **mandatory**, and monitored in the training compliance reports for the following professional roles:

- Service Manager;
- Service Manager Apprentice;
- Assistant to Service Manager;
- Service Advisor;
- Service Advisor Apprentice;
- Spare Parts Manager;
- Spare Parts person;



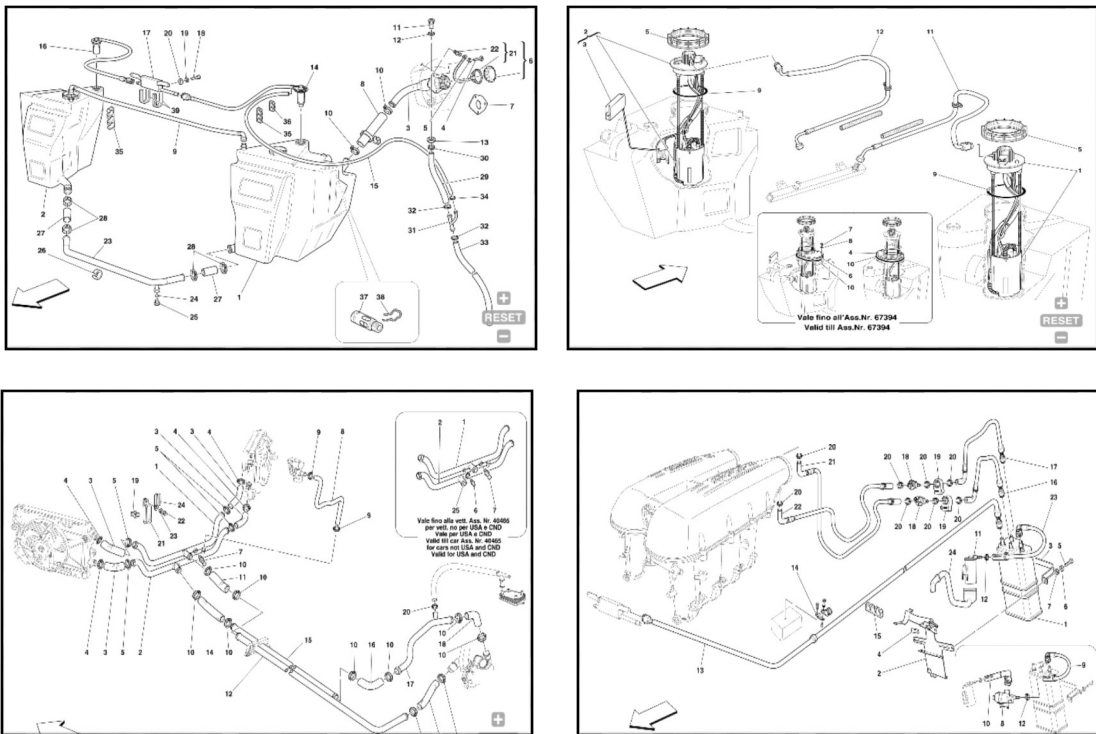
Ferrari North America

Information relative to the aforementioned course will be released by the **Academy** as news items published on both New Modis and the Digital Center. The appropriate user manual may be viewed or downloaded at any time from New Modis.

Viewing contents of basket

Note that you may verify whether a vehicle is eligible for the program or not, and view the list of spare parts applicable for the vehicle by entering the chassis number of the vehicle in the specific Ferrari Premium Score session (New Modis). A selection of the figures depicting the functional systems involved in the creation of baskets and visible in the Technical Documentation (Spare Parts session) are shown below as examples.

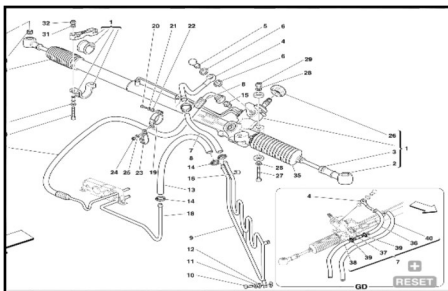
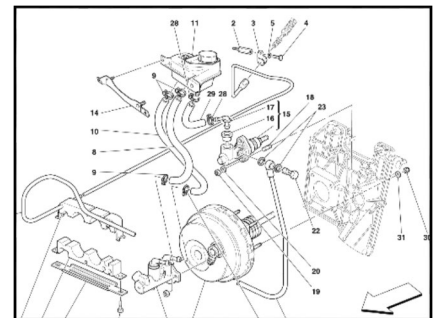
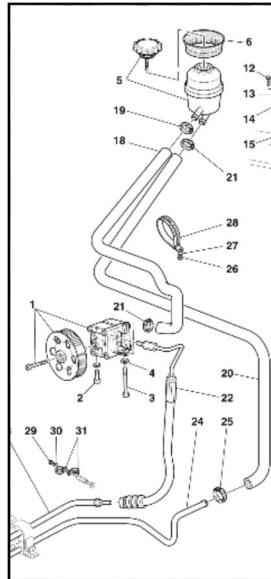
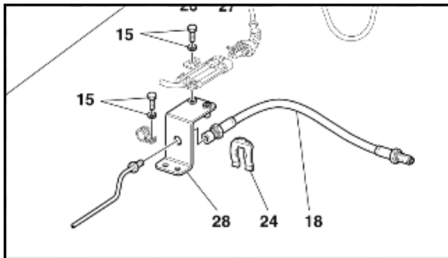
Functional systems: Fuel system - cooling - vapor recovery





Ferrari North America

Functional systems: Brakes - steering – hydraulic power steering



Thank you for your co-operation.

Initial production year	Model	Premium	Classiche
1947	125 S		✓
1947	159 S		✓
1948	166 Inter GT		✓
1948	166 S		✓
1948	166 Inter Sport		✓
1948	166 MM		✓
1950	195 Inter GT		✓
1950	195 S		✓
1950	275 S		✓
1950	340 America		✓
1951	212 Inter GT		✓
1951	342 America GT		✓
1951	212 Export		✓
1952	250 S		✓
1952	225 S		✓
1952	240 Mexico		✓
1953	250 Europa GT		✓
1953	375 America GT		✓
1953	250 MM		✓
1953	340 MM		✓
1953	375 MM		✓
1953	625 TF		✓
1953	735 S		✓
1953	500 Mondial		✓
1954	250 GT Coupè		✓
1954	750 Monza		✓
1954	250 Monza		✓
1954	375 Plus		✓
1955	376 S		✓
1955	735 LM		✓
1955	857 S		✓
1956	250 GT Berlinetta		✓
1956	410 Superamerica		✓
1956	500 TR		✓
1956	625 LM		✓
1956	410 S		✓
1956	290 MM		✓
1956	860 Monza		✓
1957	250 GT cabriolet		✓
1957	250 California		✓
1957	500 TRC		✓
1957	290 S		✓
1957	315 S		✓
1957	335 S		✓

1957	250 TR		✓
1958	Dino 196 S		✓
1958	Dino 296 S		✓
1958	312 S		✓
1958	412 S		✓
1959	250 Gt berlinetta		✓
1960	400 Superamerica		✓
1960	250 GT 2+2		✓
1960	Dino 246 S		✓
1961	246 SP		✓
1962	250 GTO		✓
1962	250 GT Berlinetta lusso		✓
1962	196 SP		✓
1962	286 SP		✓
1962	248 SP		✓
1962	268 SP		✓
1962	330 LM		✓
1962	330TR		✓
1963	250 P		✓
1963	330 P		✓
1963	250 LM		✓
1964	330 GT 2+2		✓
1964	500 Superfast		✓
1964	275 GTB		✓
1964	275 GTS		✓
1964	275 P		✓
1965	275 GTB competizione		✓
1965	275 P2		✓
1965	330 P2		✓
1965	365 P		✓
1965	Dino 166 P		✓
1965	Dino 206 SP		✓
1966	330 GTC		✓
1966	365 California		✓
1966	275 GTB4		✓
1966	330 GTS		✓
1966	Dino 206 S		✓
1966	330 P3		✓
1967	Dino 206 GT		✓
1967	365 GT 2+2		✓
1967	330P4		✓
1967	412 P		✓
1967	350 CanAm		✓
1968	365 GTC		✓
1968	365 GTB4		✓

1968	612 Can Am		✓
1969	Dino 246 GT		✓
1969	312 P		✓
1969	365 GTS		✓
1969	365 GTS4		✓
1969	212 E		✓
1970	512 S		✓
1970	512 M		✓
1971	365 GTC4		✓
1971	365 GTC4BB		✓
1971	712 Can Am		✓
1971	365 GTB4 Competizione		✓
1972	Dino 246 GTS		✓
1972	365 GT4 2+2		✓
1973	Dino 308 GT4		✓
1975	Dino 208 GT4		✓
1975	308 GTB		✓
1976	400 Automatic		✓
1976	400 GT		✓
1976	512 BB		✓
1977	308 GTS		✓
1978	512 BB LM		✓
1979	400 Automatic I		✓
1979	400 GTI		✓
1980	Mondial 8		✓
1980	208 GTB		✓
1980	208 GTS		✓
1980	308 GTBi		✓
1980	308 GTSi		✓
1981	512 Bbi		✓
1982	208 GTB turbo		✓
1982	Mondial 4 valvole		✓
1982	308 GTB 4 valvole		✓
1982	308 GTS 4 valvole		✓
1983	308 GTS Turbo		✓
1983	Mondial Cabrio		✓
1984	GTO		✓
1984	Testarossa		✓
1985	412		✓
1985	328 GTB		✓
1985	328 GTS		✓
1985	3.2 Mondial		✓
1985	3.2 Mondial Cabrio		✓
1986	GTB turbo		✓
1986	GTS Turbo		✓

1987	F40		✓
1987	408 QRM		✓
1989	Mondial T		✓
1989	Mondial T Cabrio		✓
1989	348 TB		✓
1989	348 TS		✓
1989	F40 Competizione		✓
1991	512 TR		✓
1992	456 GT	✓	✓
1993	348 GTB		✓
1993	348 GTS		✓
1993	348 Spider		✓
1993	348 GT Competizione		✓
1993	348 Challenge		✓
1994	355 Berlinetta		✓
1994	355 GTS		✓
1994	F333 SP		✓
1995	F50		✓
1995	F355 Spider		✓
1995	F355 Challenge		✓
1996	550 Maranello	✓	✓
1996	F50 GT		✓
1996	456 GTA	✓	✓
1997	355 F1 Berlinetta		✓
1997	355 F1 GTS		✓
1997	355 F1 Spider		✓
1998	456 M GT	✓	✓
1998	456 M GTA	✓	✓
1999	360 Modena	✓	✓
2000	360 Spider	✓	
2000	550 Barchetta	✓	
2000	360 Challenge		
2002	575 M Maranello	✓	
2002	Enzo	✓	
2002	360 GT	✓	
2003	Challenge Stradale	✓	
2003	575 GTC	✓	
2004	612 Scaglietti	✓	
2004	F430	✓	
2004	360 GTC		
2005	Superamerica	✓	
2005	F430 Spider	✓	
2005	FXX		
2006	599 GTB Fiorano	✓	
2006	F430 GTC		
2006	F430 Challenge		

