



Technical Tip

| | |
|--------------------|---|
| Topic | 01-19-04TT – Performing Basic Settings on Vehicles with Unified Diagnostic Services (UDS) Formatted Control Modules |
| Market area | United States 444 Volkswagen of America, Inc. (6444) |
| Brand | Volkswagen |
| Date | April 19, 2019 |

Condition

ATTENTION:

**THIS IS A TECH TIP, NOT A TECHNICAL BULLETIN AS TITLED.
TECH TIPS ARE NOT ASSOCIATED WITH WARRANTY CLAIMING.**

Performing Basic Settings on Vehicles with UDS Formatted Control Modules

| Model(s) | Year | Eng. Code | Trans. Code | VIN Range From | VIN Range To |
|--|--------------|-----------|-------------|----------------|--------------|
| Jetta, Golf, GTI, Golf R, Passat, eGolf, CC, Beetle, Beetle Convertible, EOS, Tiguan, Toareg, Atlas, Tiguan LWB | 2011 to 2019 | All | All | All | All |

Technical Background

How to perform basic settings on vehicles with UDS formatted control modules.

Service

- Navigate to Engine Electronics Control Module OBD, basic settings.
- Select basic settings, then click on green arrow (Figure 1).

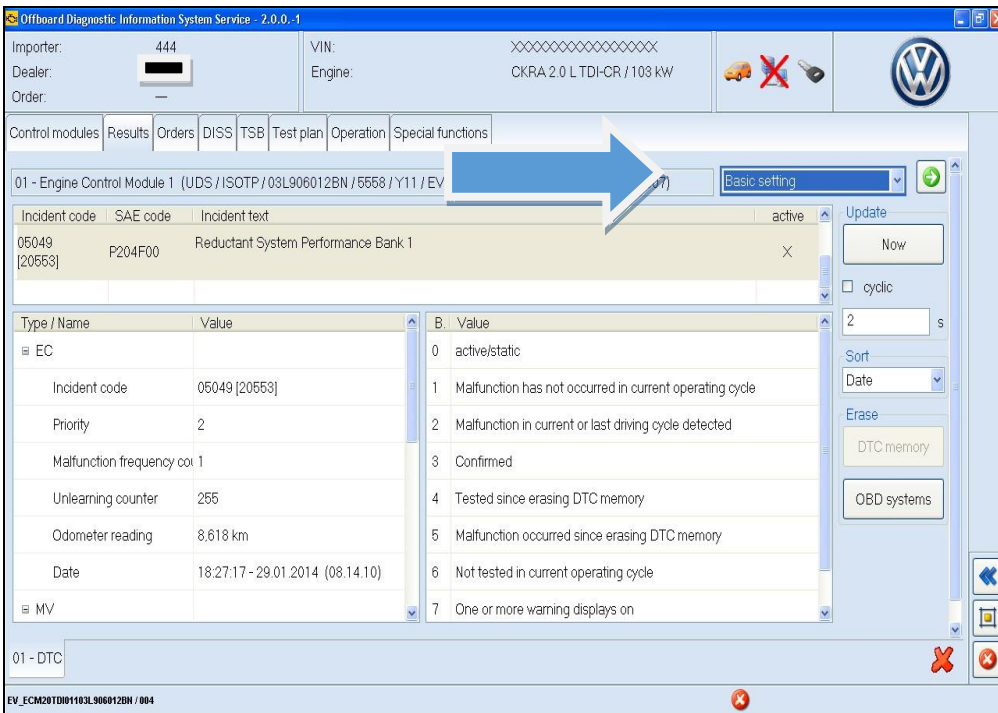


Figure 1

From the left box:

- Select the basic settings test needed and move to right side.
- Click the blue forward arrow on the bottom right side of the screen (Figure 2).

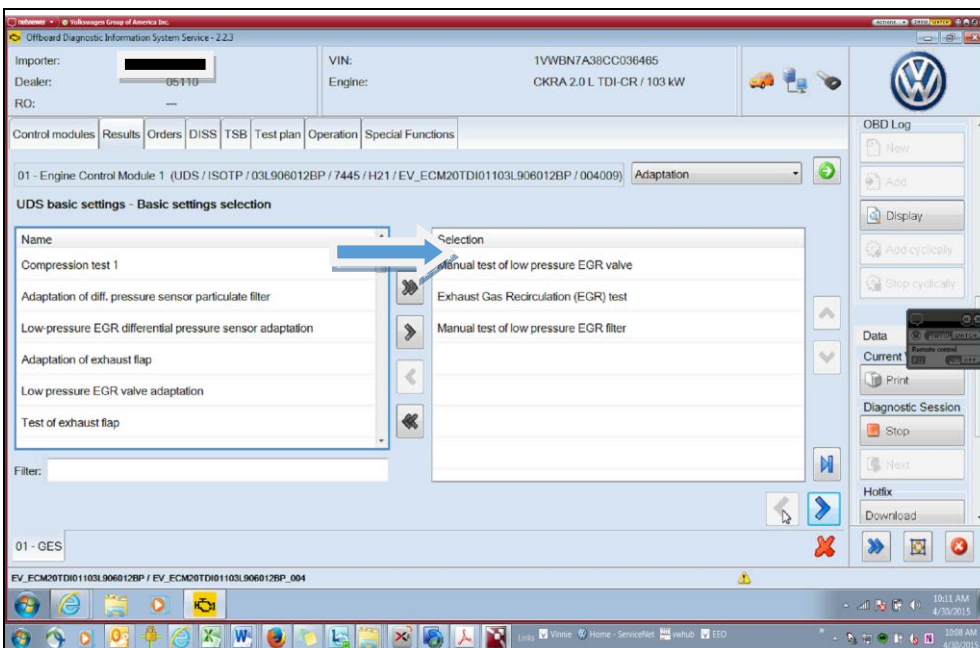


Figure 2

- Click the Blue forward arrow again. Disregard the (VO)_not available (Figure 3).

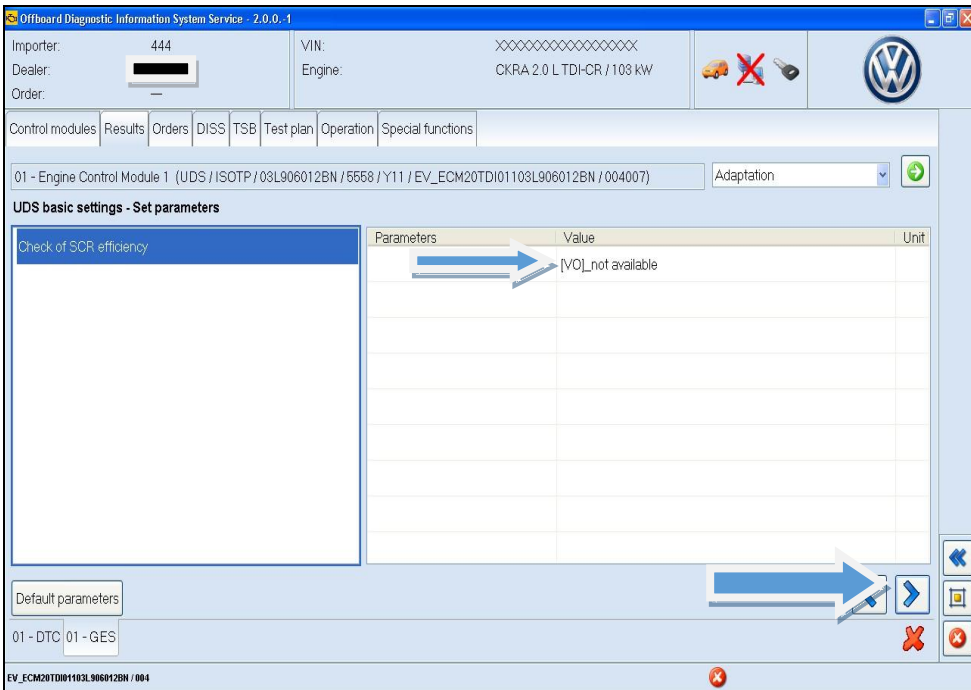


Figure 3

The box on the left side is measured values.

- Select IDE00322 Status of basic settings, IDE00450 Operating instructions and any other measured value to be reviewed, during the basic settings test plan.

Once all measured values have been selected:

- Click the blue forward button on the bottom right of the screen.

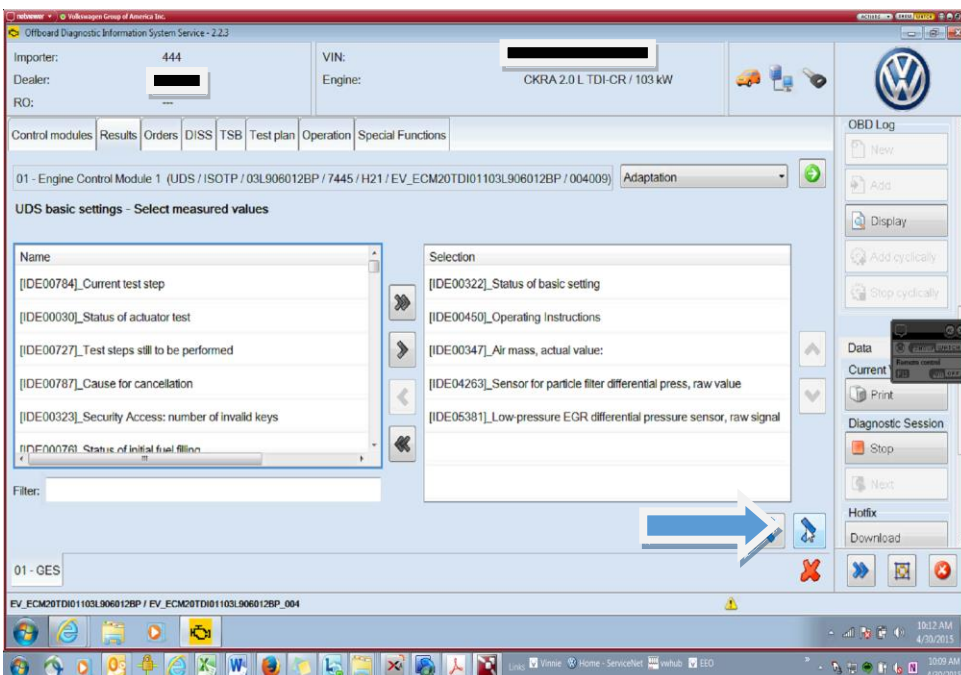


Figure 4

The basic settings test will be in the top box and highlighted.

- Click start and scroll down in the bottom box.
- Check operating instructions, hold brake and accelerator pedal until test plan completes.

If you are running more than 1 basic settings test, once the current basic settings is ended:

- Select the next button on the bottom left to proceed to any additional tests you have chosen (Figure 5).

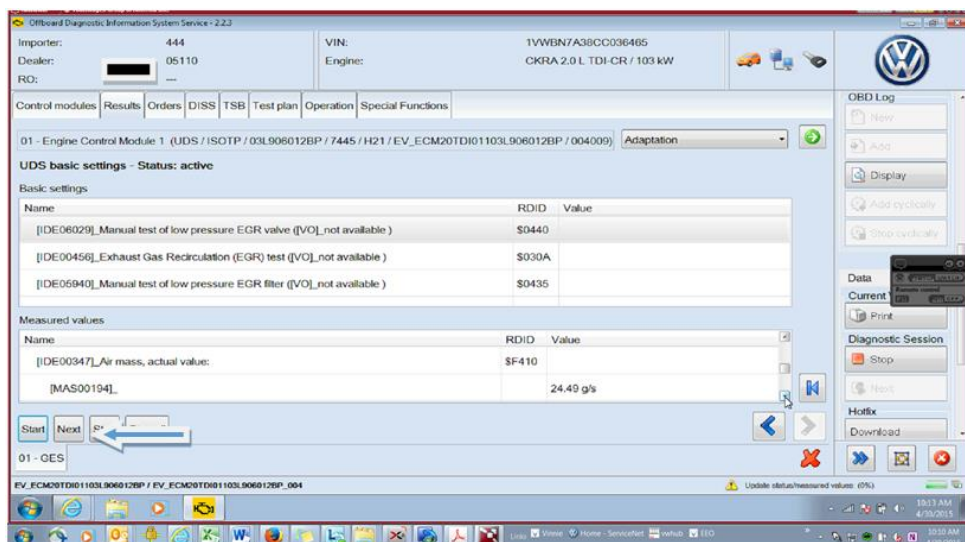


Figure 5

Additional Information

Revision History

| Revision Number | Released Date | Reason For Update |
|-----------------|---------------|-----------------------|
| 2054794/1 | 4/19/19 | Original publication. |

© 2019 Volkswagen Group of America, Inc. All rights reserved. Information contained in this document is based on the latest information available at the time of printing and is subject to the copyright and other intellectual property rights of Volkswagen Group of America, Inc., its affiliated companies and its licensors. All rights are reserved to make changes at any time without notice. No part of this document may be reproduced, stored in a retrieval system, or transmitted in any form or by any means, electronic, mechanical, photocopying, recording, or otherwise, nor may these materials be modified or reposted to other sites, without the prior expressed written permission of the publisher.