



SERVICE BULLETIN

Classification:

EC19-015

NTB19-022

Date:

March 5, 2019

NISSAN; P0171 AND P0174 SERVICE INFORMATION

APPLIED VEHICLES:	2017-2018 Altima (L33)	2017-2019 Armada (Y62)
	2017-2019 Sentra (B17)	2017-2019 Frontier (D40)
	2017-2019 Versa Note (E12)	2017-2019 Titan/Titan XD (A61)
	2017-2019 Rogue (T32)	2017-2019 NV (F80)
	2017-2019 Murano (Z52)	

SERVICE INFORMATION

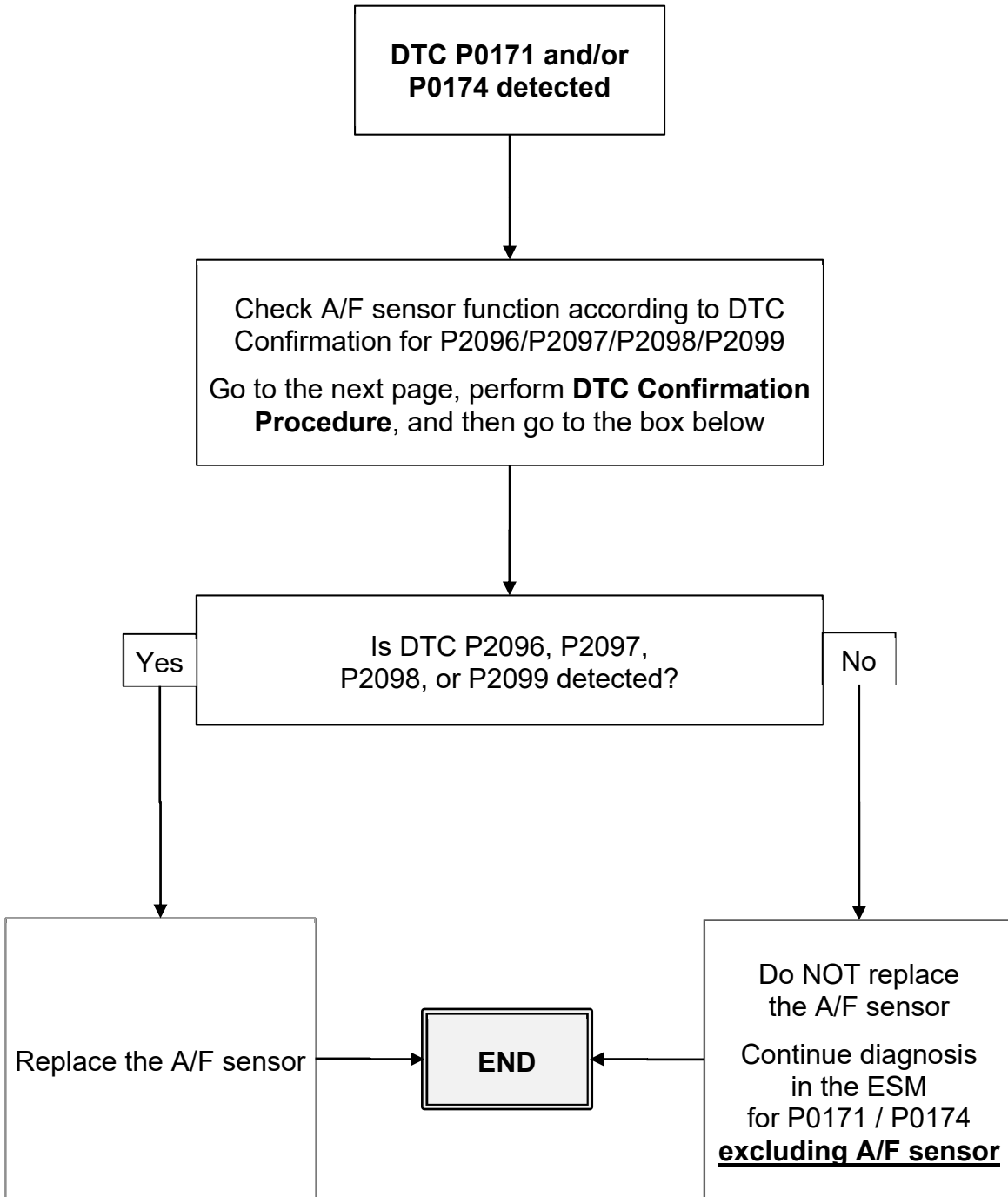
Diagnosis for DTCs P0171 (FUEL SYS LEAN B1) and P0174 (FUEL SYS LEAN B2) have been revised for the **APPLIED VEHICLES** listed above. When performing diagnosis for either of these DTCs, start by using the **SERVICE PROCEDURE** section of this bulletin.

NOTE: The related Electronic Service Manuals (ESM) will be revised in the future to include these diagnostic steps.

Nissan Bulletins are intended for use by qualified technicians, not 'do-it-yourselfers'. Qualified technicians are properly trained individuals who have the equipment, tools, safety instruction, and know-how to do a job properly and safely. **NOTE:** If you believe that a described condition may apply to a particular vehicle, DO NOT assume that it does. See your Nissan dealer to determine if this applies to your vehicle.

SERVICE PROCEDURE

FLOW CHART



DTC Confirmation

Preconditioning

If DTC Confirmation has been previously conducted, always perform the following before conducting the next test:

1. Turn the ignition switch OFF and wait at least 10 seconds.
2. Turn the ignition switch ON.
3. Turn the ignition switch OFF and wait at least 10 seconds.

Testing Condition

Confirm battery voltage is 11 volts or more at idle before performing **DTC Confirmation**.

Perform DTC Confirmation

4. Clear the mixture ratio self-learning value:
 - a. Connect the CONSULT PC and plus VI to the vehicle.
 - b. Open CONSULT-III plus (C-III plus).
 - c. Start the engine and warm it up to normal operating temperature.
 - d. Go to **WORK SUPPORT**, and then select **SELF-LEARNING CONT**.
 - e. Clear mixture ratio self-learning value by selecting **CLEAR**.
5. Turn the ignition switch OFF and wait at least 10 seconds.
6. Turn the ignition switch ON.
7. Turn the ignition switch OFF and wait at least 10 seconds.
8. Start the engine and keep the engine speed between 3,500 and 4,000 RPM for one (1) minute under no load.
9. Let the engine idle for 1 minute.
10. Keep the engine speed between 2,500 and 3,000 RPM for 20 minutes.
11. Check for 1st trip DTC:
 - If DTC P2096, P2097, P2098, or P2099 is stored, replace the corresponding A/F sensor.
 - If no DTCs are stored, continue with the diagnosis in the ESM for P0171 / P0174 **excluding A/F sensor**.

AMENDMENT HISTORY

PUBLISHED DATE	REFERENCE	DESCRIPTION
March 5, 2019	NTB19-022	Original bulletin published