



SERVICE BULLETIN

Classification: AT18-005b	Reference: NTB18-055b	Date: March 20, 2019
------------------------------	--------------------------	-------------------------

CVT FLUID LEVEL QUICK CHECK GAUGE

**This bulletin has been amended. See AMENDMENT HISTORY on the last page.
Discard all previous versions of this bulletin.**

APPLIED VEHICLES: 2013-2018 Altima Sedan (L33) 2015-2017 Quest (E52)
 2016-2019 Maxima (A36) 2014-2019 Rogue (T32)
 2015-2019 Murano (Z52) 2017-2019 Rogue Sport (J11)
 2013-2019 Pathfinder (R52) 2017-2019 Sentra Turbo (B17)

APPLIED TRANSMISSION: APPLIED VEHICLES equipped with CVT ONLY

SERVICE INFORMATION

Special tools CVT Oil Level Quick Check Gauge (J-51155) and CVT Charge Pipe Cap Release (J-52611) are now available (see page 2).

Each dealer has been shipped one each of these tools.

Additional tools can be obtained from Tech•Mate at 1-800-662-2001.

Refer to the **SERVICE PROCEDURE** starting on page 3 to determine how to perform a CVT fluid quick level check.

Nissan Bulletins are intended for use by qualified technicians, not 'do-it-yourselfers'. Qualified technicians are properly trained individuals who have the equipment, tools, safety instruction, and know-how to do a job properly and safely. **NOTE:** If you believe that a described condition may apply to a particular vehicle, DO NOT assume that it does. See your Nissan dealer to determine if this applies to your vehicle.

SPECIAL TOOLS

CVT Oil Level Quick Check Gauge (J-51155)



Figure 1

CVT Charge Pipe Cap Release (J-52611)



Figure 2

SERVICE PROCEDURE

Inspect CVT Fluid Level

NOTE:

- Steps 1 through 6 will ensure that CVT fluid is properly distributed throughout the CVT.
- A video on how to use tool J-52611 is available on nissantechmate.com: On the home page, type "J-52611" in the search window, select "Enter" on your keyboard, and then select **Charge Pipe Cap Release Tool**.

1. Park the vehicle on level ground (engine running, parking brake set).
2. Using CONSULT III plus (C-III plus), ensure that the CVT fluid operating temperature is within the range of 170°F-180°F (77°C-82°C).
3. Shift the transmission into REVERSE for 5 seconds.
4. Shift the transmission into DRIVE for 5 seconds.
5. Shift the transmission into REVERSE for 5 seconds.
6. Shift the transmission into PARK.

7. Install special tool CVT Charge Pipe Cap Release (J-52611) where shown in Figure 3.

- See page 2, **SPECIAL TOOLS**.

NOTE: The tool shown in Figures 3 & 4 is the same as the one shown in Figure 2, but looks slightly different.

8. Squeeze the tool toward the cap, and then slightly lift the cap (see Figure 3).

NOTE:

- The cap's locking tab is unlocked while squeezing.
- Notice the gap between the cap and charging pipe in Figure 4.

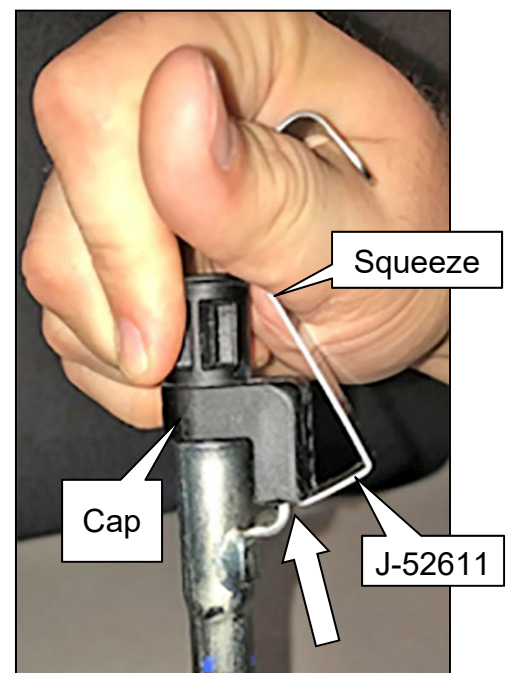


Figure 3

9. Remove tool J-52611 from the cap.

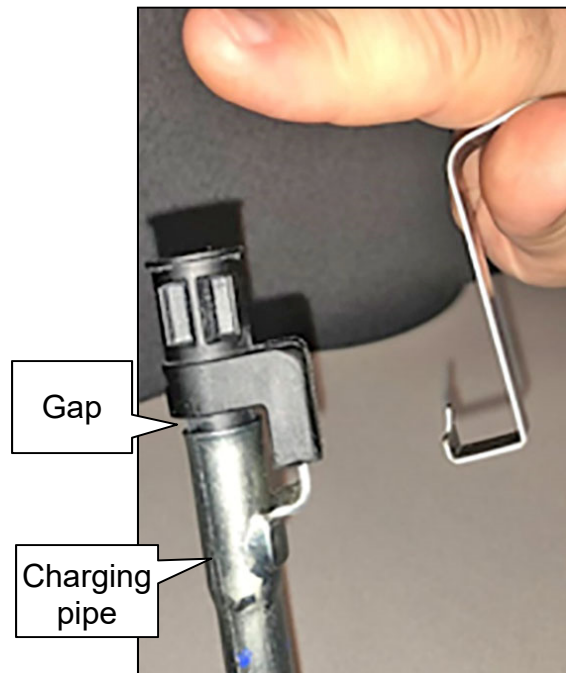


Figure 4

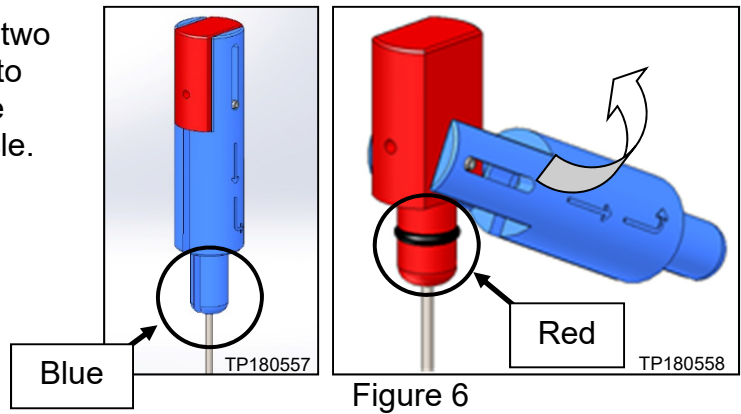
10. Pull to remove the cap from the charging pipe.

- Tool CVT Oil Level Quick Check Gauge (J-51155) can now be used to determine the CVT fluid level.



Figure 5

- The handle on tool J-51155 has two positions - Red and Blue. Refer to **Table A** on the next page for the correct position for a given vehicle.



- With the vehicle in PARK and the engine running, insert tool J-51155 into the pipe.
 - Make sure to use the correct handle position (refer to **Table A**).

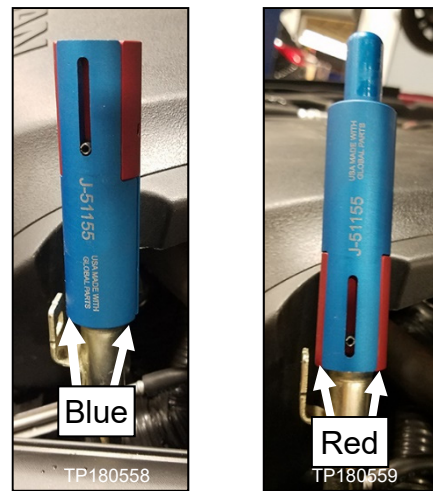


Table A

Model	Level (mm)	Handle Position
2013-2018 Altima Sedan (QR25)	23-30	Blue
2013-2018 Altima Sedan (VQ35)	14-22	Red
2016-2019 Maxima	14-22	Red
2015-2019 Murano (Non-hybrid)	14-22	Red
2013-2019 Pathfinder (Non-hybrid)	14-22	Red
2015-2017 Quest	14-22	Red
2014-2019 Rogue (U.S. and Japan built) (VIN starts with 5N or JN) (Non-hybrid)	44-51	Blue
2015-2019 Rogue (Korea built) (VIN starts with KN) (Non-hybrid)	50-57	Blue
2017-2019 Rogue Sport	10-17	Blue
2017-2019 Sentra (Turbo ONLY)	10-17	Blue

12. Inspect tool J-51155 to determine the CVT fluid level in millimeters, and then compare the reading to the specifications in **Table A** above.

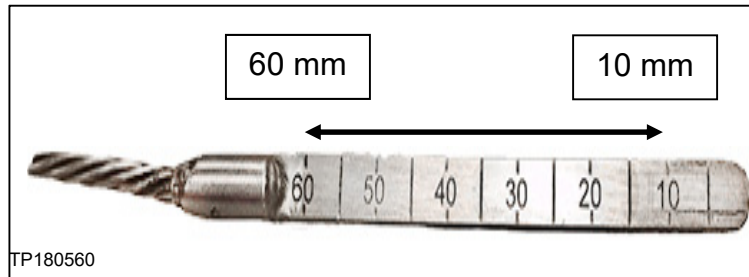


Figure 8

ADJUST CVT FLUID LEVEL

13. Adjust the fluid level from the bottom of the CVT according to the procedure in the Electronic Service Manual (ESM).

AMENDMENT HISTORY

PUBLISHED DATE	REFERENCE	DESCRIPTION
August 3, 2018	NTB18-055	Original bulletin published
November 5, 2018	NTB18-055a	Steps 1 and 2 revised
March 20, 2019	NTB18-055b	APPLIED VEHICLES and Table A amended, the picture of tool J-51155 moved to page 2, and tool J-52611 added