



Technical Service Bulletin

SUBJECT:		No: TSB-19-36-001	
CAUTIONS ADDED TO PARKING BRAKE LEVER ADJUSTMENT, REMOVAL & INSTALLATION - SERVICE MANUAL REVISION		DATE: March 2019	
		MODEL: 2018 Eclipse Cross	
CIRCULATE TO:	<input type="checkbox"/> GENERAL MANAGER	<input checked="" type="checkbox"/> PARTS MANAGER	<input checked="" type="checkbox"/> TECHNICIAN
<input checked="" type="checkbox"/> SERVICE ADVISOR	<input checked="" type="checkbox"/> SERVICE MANAGER	<input checked="" type="checkbox"/> WARRANTY PROCESSOR	<input type="checkbox"/> SALES MANAGER

PURPOSE

This TSB updates the Parking Brake section of the affected Service Manual, to include additional cautions to the parking brake lever stroke adjustment, and removal and installation procedures.

AFFECTED VEHICLES

- 2018 Eclipse Cross

AFFECTED SERVICE MANUAL

- 2018 Eclipse Cross Service Manual, Group 36-Parking Brake

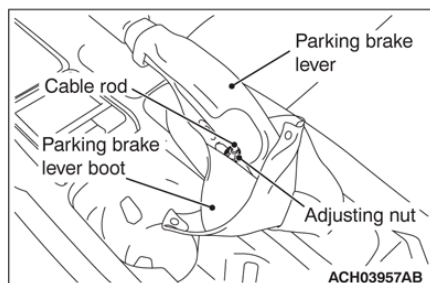


Please make the indicated changes to the 2018 Eclipse Cross Service Manual, Group 36-Parking Brake -> On-Vehicle Service -> Parking Brake Lever Stroke Check & Adjustment -> Stroke Adjustment.

<Added>

CAUTION

Be careful not to cut yourself on the edge of the sheet metal of the parking brake lever assembly.



PARKING BRAKE LEVER STROKE CHECK AND ADJUSTMENT <LEVER TYPE PARKING BRAKE>

STROKE CHECK (CONTROL FORCE APPROXIMATELY 200 N [45 pounds])

Standard value: 8 notches

STROKE ADJUSTMENT

If the parking brake lever stroke is out of the standard range, adjust as described below:

1. Turn up the parking brake lever boot.
2. Loosen the adjusting nut to the end of the cable rod in order to allow slack in the cables.
3. Check that the parking brake lever on the caliper side is touching the parking brake lever bracket.

NOTE: If the parking brake lever is not touching the parking brake lever bracket, the parking brake cable might be stuck or routed incorrectly, or there might be a problem with the automatic adjustment mechanism inside the rear brake calipers. Therefore, it is necessary to check the parking brake cable and to disassemble and inspect the rear brake calipers.

4. Depress the brake pedal repeatedly until the brake pedal has no change in its stroke.

NOTE: Depressing the brake pedal repeatedly adjusts pad clearance correctly.

CAUTION

Be careful that the parking brake lever notch number should be within the standard range. If the notch number is too low, rear brake dragging can be caused.

5. Adjust the parking brake lever stroke to the standard value by turning the adjusting nut. After adjustment, check that there is no free play between the adjusting nut and the parking brake lever.
6. After the parking brake lever stroke is adjusted, raise the rear of the vehicle. Release the parking brake, and turn the rear wheels to confirm that the rear brakes are not dragging.

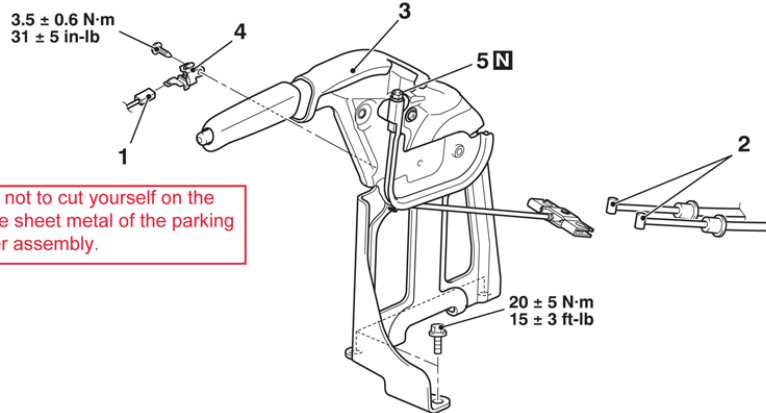
Please make the indicated changes to the 2018 Eclipse Cross Service Manual, Group 36-Parking Brake -> Parking Brake Lever <Lever Type Parking Brake> -> Removal & Installation.

REMOVAL AND INSTALLATION

CAUTION

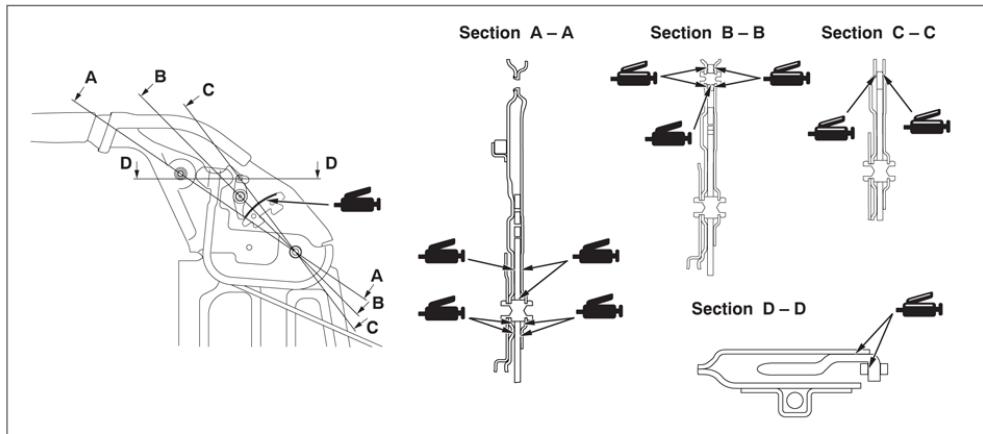
Do not apply grease or lubricant to the switch and the switch installation section to avoid malfunction of the switch. In addition, do not use gloves which have grease on them.

<p>Pre-removal operation Floor Console Center Removal (Refer to GROUP 52A – Floor Console Assembly).</p>	<p>Post-installation operation</p> <ul style="list-style-type: none"> • Parking Brake Lever Stroke Check (Refer to). • Floor Console Center Installation (Refer to GROUP 52A – Floor Console Assembly).
--	--



Be careful not to cut yourself on the edge of the sheet metal of the parking brake lever assembly.

<Added>



ACH03485AB

- Removal steps**
- Release the parking brake lever.
 - Loosen the adjusting nut.
1. Parking brake switch connector connection

- >>A<<
- Removal steps**
2. Parking brake rear cable assembly connection
 3. Parking brake lever assembly
 4. Parking brake switch
 5. Adjusting nut