



INSTRUCTION TO SERVICE

ITS: 58608	
SECTION:	460 Windows
WRITTEN BY:	Troy Stutsky
SUBJECT:	Add retainer blocks to SDS window hinge

ITS58608

THIS ITS DOCUMENT SHOULD BE RETAINED AND REFERED TO FOR FUTURE MAINTENANCE UNTIL THE NEW FLYER PARTS AND/OR SERVICE MANUAL IS UPDATED TO REFLECT WORK DONE AS A RESULT OF THIS DOCUMENT. ENSURE THAT THIS DOCUMENT IS AVAILABLE FOR PARTS AND MAINTENANCE STAFF GOING FORWARD.

THIS DOCUMENT AND THE CONTENTS DISCUSSED HEREIN ARE THE CONFIDENTIAL AND PROPRIETARY INFORMATION OF NEW FLYER INDUSTRIES CANADA ULC AND NEW FLYER OF AMERICA INC. AND ARE DISCLOSED BY NEW FLYER IN CONFIDENCE. THIS DOCUMENT AND THE CONTENTS HEREIN ARE NOT TO BE DISCLOSED BY THE INTENDED RECIPIENT WITHOUT THE PRIOR WRITTEN AUTHORIZATION OF NEW FLYER. ANY UNAUTHOIZED DISCLOSURE, REPRODUCTION OR OTHER DISTRIBUTION OF THIS DOCUMENT OR INFORMATION IS STRICTLY PROHIBITED AND MAY RESULT IN ACTION BEING TAKEN AGAINST THE PARTY MAKING THE UNAUTHORIZED DISCLOSURE. THIS DOCUMENT AND ALL COPIES HEREOF MUST BE RETURNED TO NEW FLYER UPON REQUEST.



PROCEDURE:

1. Turn the main battery disconnect switch to the "OFF" position.
2. Open the SDS window and clean the window hinge frame with a lint free cloth dampened with Isopropyl Alcohol (NF PN 134336) and allow a minimum of ten minutes to flash off.
3. Using the dimensions in section C-C in Figure 1 below, measure and mark the locations of the four window retainer blocks found in supplied kit (NF PN 786930).
4. Apply a piece of the VHB tape supplied in kit (NF PN 786930) to the top of each of the four retainer blocks as shown in Detail B of Figure 1 and rotate them into the four marked locations on the window hinge. Orient the blocks as shown in Detail B.
5. Apply hand pressure to the blocks as they are installed to ensure the tape makes a secure bond. You may need to use a flat head screwdriver to help apply the pressure to the block if the hand doesn't fit.
6. Once all four retainer blocks have been installed check the operation of the windows and make any required adjustments. Once window is operating normally close the window and ensure the latch is secure.
7. Remove all tools and debris and return the bus to service condition.
8. Turn the main battery disconnect switch to the "ON" position.

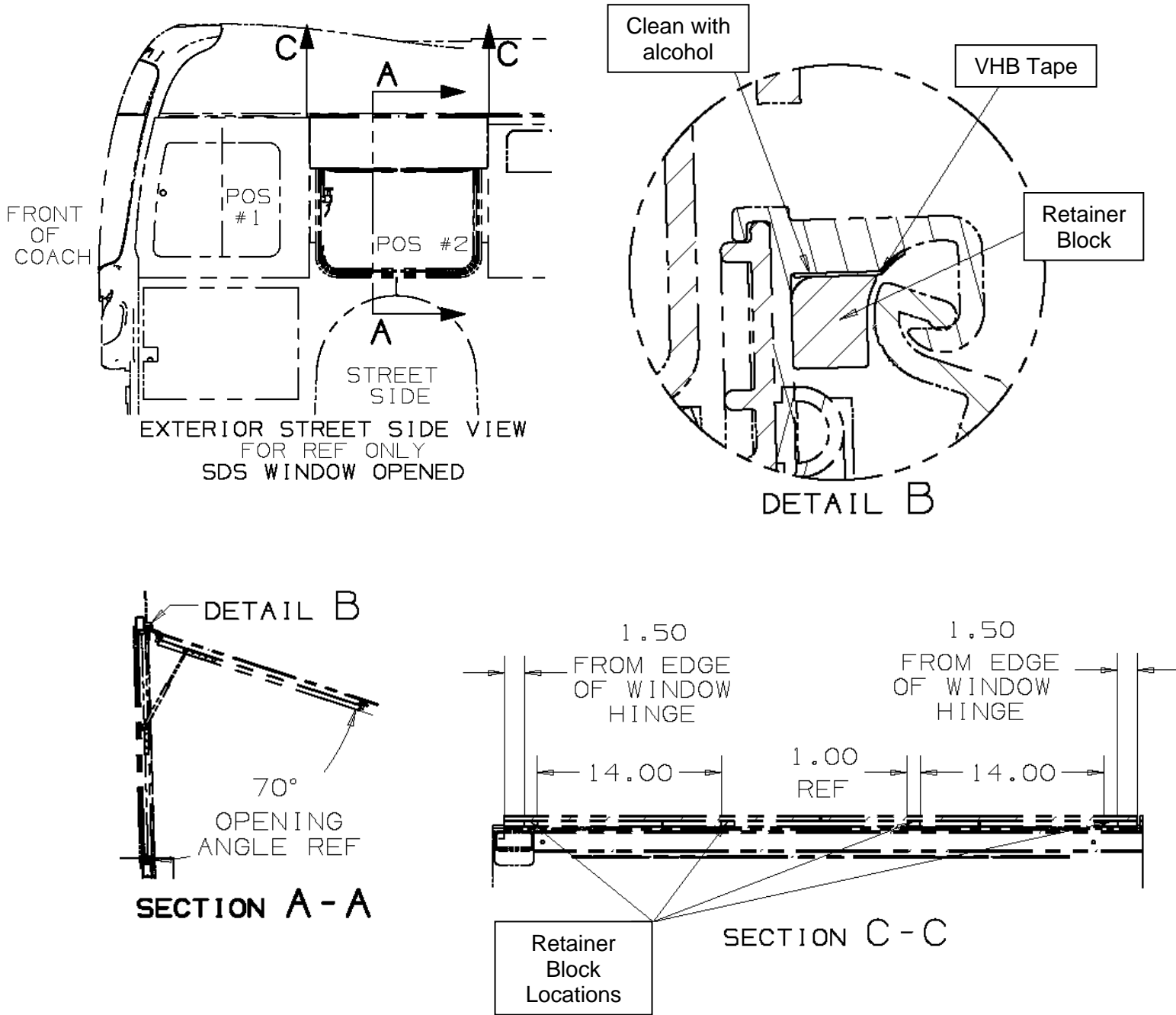


Figure 1: New retainer block locations



NEW FLYER

LABOUR ESTIMATE

	Operation	Men	Hours	Labour Time M X HR
1	Add retainer blocks to SDS window hinge	1	0.5	0.5

PARTS REQUIRED

Item	Part Number	Description	Qty. per Coach	Units	Notes
1	786930	ASSY – WINDOW RETAINER	1	EA	
2	134336	ISOPROPYL ALCOHOL	0.01	GA	Source Locally