

Classification:

EC17-006a

Reference:

ITB17-017a

Date:

February 28, 2019

MIL ON WITH DTC P0101, P010B, AND/OR P0106

This bulletin has been amended. See AMENDMENT HISTORY on the last page.
Please discard previous versions of this bulletin.

APPLIED VEHICLES: 2016-2018 Q50 (V37)
2017-2018 Q60 (V37)

APPLIED ENGINE: VR30DDTT (V6 twin turbo engine)

IF YOU CONFIRM

The MIL is ON with one or more of the following DTCs stored:

- P0101 (MAF SEN/CIRCUIT-B1)
- P010B (MAF SEN/CIRCUIT-B2)
- P0106 (ABSL PRES SEN/CIRC)

and

There are no drivability issues.

ACTION

1. Refer to step 6 in the **SERVICE PROCEDURE** to confirm this bulletin applies to the vehicle you are working on.
2. If this bulletin applies, reprogram the ECM.

IMPORTANT: The purpose of **ACTION** (above) is to give you a quick idea of the work you will be performing. You **MUST** closely follow the entire **SERVICE PROCEDURE** as it contains information that is essential to successfully completing this repair.

Infiniti Bulletins are intended for use by qualified technicians, not 'do-it-yourselfers'. Qualified technicians are properly trained individuals who have the equipment, tools, safety instruction, and know-how to do a job properly and safely. **NOTE:** If you believe that a described condition may apply to a particular vehicle, **DO NOT** assume that it does. See your Infiniti retailer to determine if this applies to your vehicle.

SERVICE PROCEDURE

IMPORTANT: Before starting, make sure:

- ASSIST on the CONSULT PC has been synchronized (updated) to the current date.
- All CONSULT-III plus (C-III plus) software updates (if any) have been installed.
- The CONSULT PC is connected to the Internet (Wi-Fi or cable).

NOTE:

- Most instructions for reprogramming with CONSULT-III plus (C-III plus) are displayed on the CONSULT PC screen.
- If you are not familiar with the reprogramming procedure, click here. This will link you to the "CONSULT- III plus (C-III plus) Reprogramming" general procedure.
- Take the vehicle for a 10 minute drive in order to meet the following Idle Air Volume Learn (IAVL) conditions:

- Engine coolant temperature: 70 - 105°C (158 - 221°F)
- Battery voltage: More than 12.9V (at idle)
- Transmission: Warmed up



Figure A

NOTE: After reprogramming is complete, you will be required to perform Throttle Valve Closed Position, Idle Air Volume Learn, Accelerator Closed Position, and DTC erase. The above conditions are required for IAVL to complete.

CAUTION:

- Connect the GR8 to the 12V battery and set to ECM power supply mode.
If the vehicle battery voltage drops below 12.0V or above 15.5V during reprogramming, the ECM may be damaged.
- Be sure to turn OFF all vehicle electrical loads.
If a vehicle electrical load remains ON, the ECM may be damaged.
- Be sure to connect the AC Adapter.
If the CONSULT PC battery voltage drops during reprogramming, the process will be interrupted and the ECM may be damaged.
- Turn off all external Bluetooth® devices (e.g., cell phones, printers, etc.) within range of the CONSULT PC and the VI. If Bluetooth® signal waves are within range of the CONSULT PC during reprogramming, reprogramming may be interrupted and the ECM may be damaged.

1. Connect the CONSULT PC to the vehicle to begin the reprogramming procedure.
2. Open / start C-III plus.
3. Wait for the plus VI to be recognized.
 - The Serial No. will display when the plus VI is recognized.
4. Select Re/programming, Configuration.

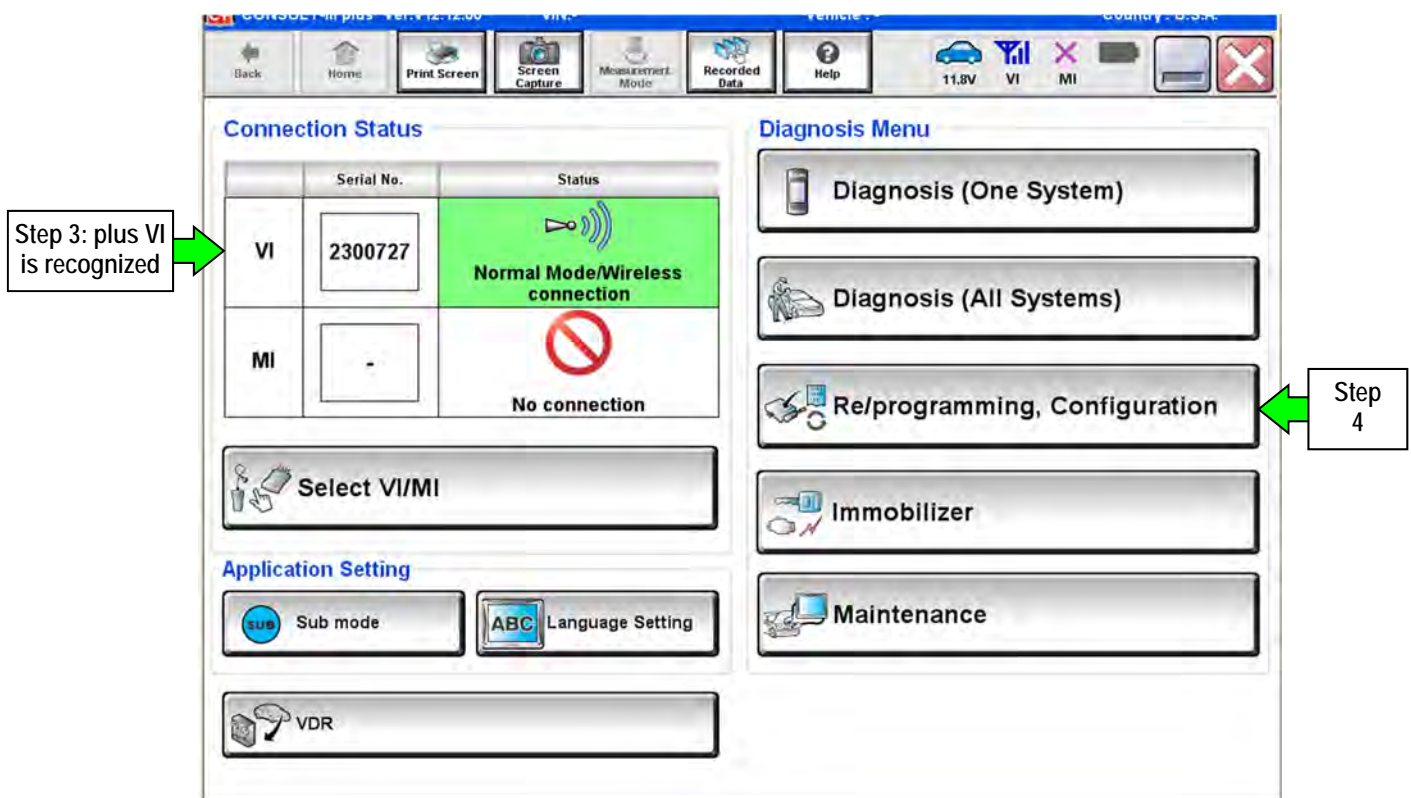


Figure 1

5. Follow the on-screen instructions and navigate the C-III plus to the screen shown in Figure 2 on the next page.

6. When you get to the screen shown in Figure 2, confirm this bulletin applies as follows:
- A. Find the ECM Part Number and write it on the repair order.

NOTE: This is the current ECM Part Number (P/N).

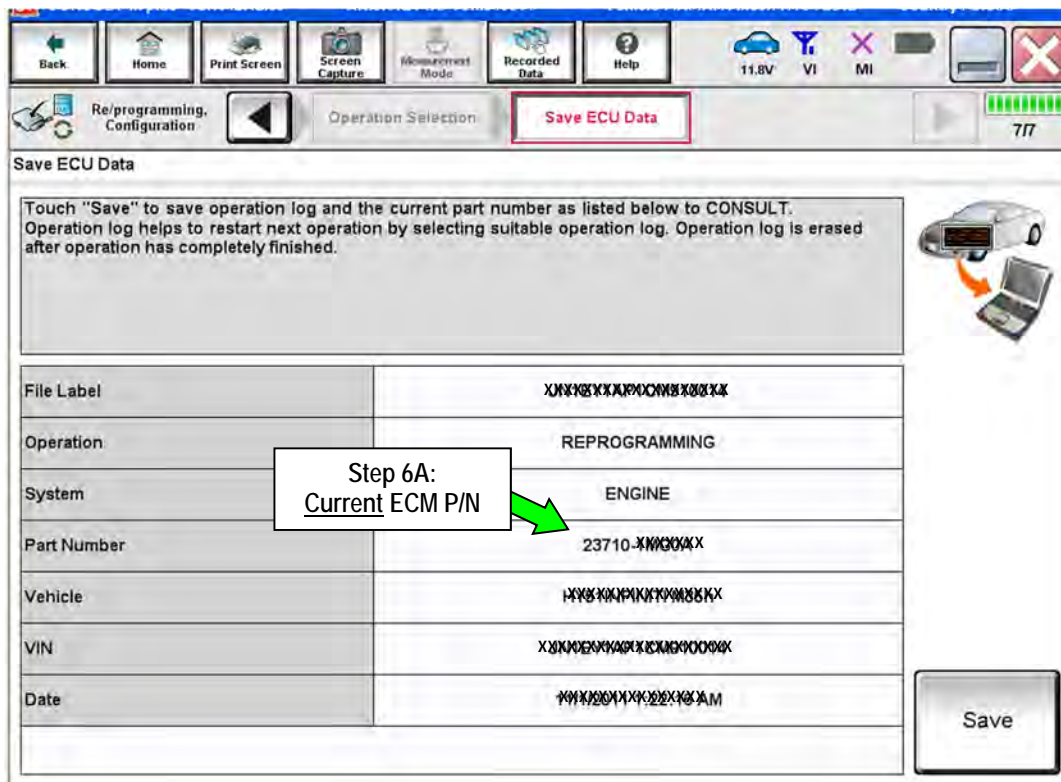


Figure 2

- B. Compare the P/N you wrote down to the numbers in the **Current ECM Part Number** column in **Table A** on the next page.
- If there is a match, this bulletin applies. Continue with the reprogramming procedure.
 - If there is not a match, this bulletin does not apply. Close C-III plus and refer to ASIST for further diagnostic information.

Table A

Model	Current ECM Part Number: 23710-
2016 Q50	5CD5A, 5CD5B, 5CD6A, 5CD6B 5CF1A, 5CF1B, 5CF2A, 5CF2B, 5CF3A, 5CF3B 5CF4A, 5CF4B, 5CF5A, 5CF5B 5CF6A, 5CF6B, 5CF7A, 5CF7B, 5CF8A, 5CF8B, 5CF9A, 5CF9B 5CH3A, 5CH3B, 5CH4A, 5CH4B, 5CH7A, 5CH7B, 5CH8A, 5CH8B, 5CH9A, 5CH9B 5CJ2A, 5CJ2B, 5CJ3A, 5CJ3B, 5CJ4A, 5CJ4B, 5CJ5A, 5CJ5B 5CJ6A, 5CJ6B, 5CJ7A, 5CJ7B, 5CJ8A, 5CJ8B, 5CJ9A, 5CJ9B
2017 Q50	6HA0A, 6HA1A, 6HA2A, 6HA3A, 6HA4A, 6HA5A, 6HA6A, 6HA7A 6HF0A, 6HF1A, 6HF2A, 6HF3A, 6HF4A, 6HF5A, 6HF6A, 6HF7A 6HG2A, 6HG3A, 6HG4A, 6HG5A, 6HG6A, 6HG7A, 6HG8A, 6HG9A
2018 Q50	6HB0A, 6HB0B, 6HB1A, 6HB1B, 6HB2A, 6HB2B, 6HB3A, 6HB3B 6HB4A, 6HB4B, 6HB5A, 6HB5B, 6HB6A, 6HB6B, 6HB7A, 6HB7B 6HD4A, 6HD4B, 6HD5A, 6HD5B, 6HD6A, 6HD6B, 6HD7A, 6HD7B 6HD8A, 6HD8B, 6HD9A, 6HD9B 6HJ0A, 6HJ0B, 6HJ1A, 6HJ1B, 6HJ2A, 6HJ2B, 6HJ3A, 6HJ3B 6HJ4A, 6HJ4B, 6HJ5A, 6HJ5B, 6HJ6A, 6HJ6B, 6HJ7A, 6HJ7B 6HJ8A, 6HJ8B, 6HJ9A, 6HJ9B, 6HJ9C
2017 Q60	5CC0C, 5CC1B, 5CC8B, 5CC9B 5CG0C, 5CG1B, 5CG5B, 5CG6B, 5CG7B, 5CG8B 5CH1B, 5CH2C, 5CH5C, 5CH6C 5CJ0B, 5CJ1B 5CK1B, 5CK2B, 5CK3B, 5CK4B 5CL5B, 5CL6B, 5CL7B, 5CL8B
2018 Q60	4GC6A, 4GC7A, 4GC8A, 4GC9A 4GD2A, 4GD3A, 4GD4A, 4GD5A, 4GD6A, 4GD7A, 4GD8A, 4GD9A 4GE6A, 4GE7A, 4GE8A, 4GE9A 4GF3A, 4GF6A 4GG0A, 4GG1A, 4GG2A, 4GG3A 4HL6A, 4HL7A, 5CP3A

7. Follow the on-screen instructions to navigate C-III plus and reprogram the ECM.

NOTE:

- In some cases, more than one new P/N for reprogramming is available.
 - If more than one new P/N is available, the screen in Figure 3 displays.
 - Select and use the reprogramming option that **does not** have the message “Caution! Use ONLY with ITBXX-XXX”.
- If you get this screen and it is blank (no reprogramming listed), it means there is no reprogramming available for this vehicle. Close C-III plus and refer back to ASIST for further diagnosis.

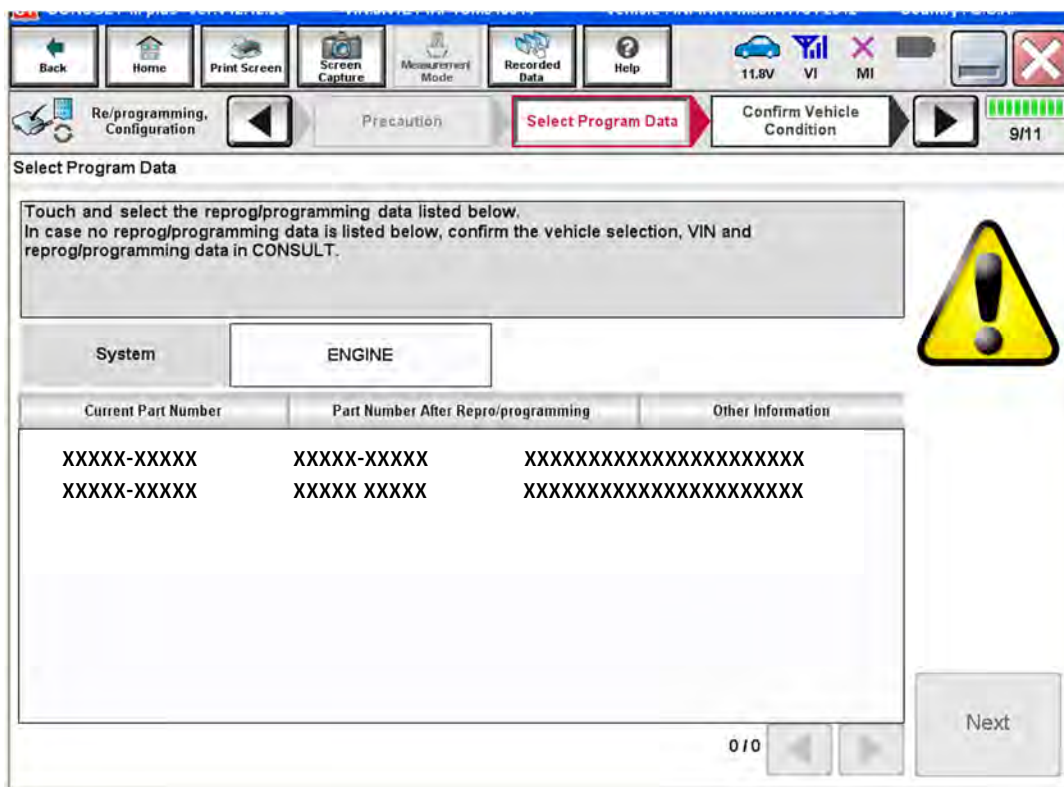


Figure 3

8. When the screen in Figure 4 displays, reprogramming is complete.

NOTE: If the screen in Figure 4 does not display (reprogramming does not complete), refer to ECM recovery on the next page.

9. Disconnect the GR8 (battery charger) from the vehicle.

10. Select **Next**.

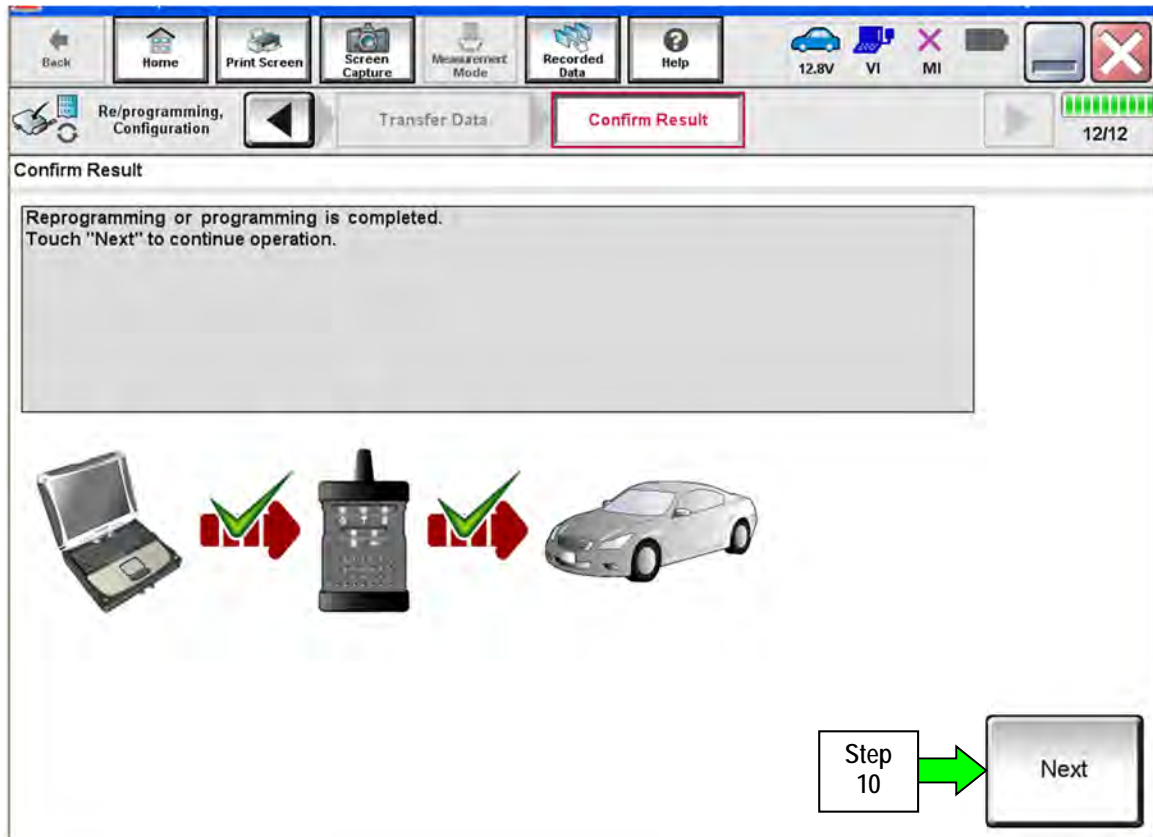


Figure 4

NOTE:

- In the next steps, starting on page 9, you will perform Throttle Valve Closed Position, Idle Air Volume Learn, Accelerator Closed Position, and DTC erase.
- These operations are required before C-III plus will provide the final reprogramming confirmation report.

ECM recovery:

Do not disconnect plus VI or shut down Consult III plus if reprogramming does not complete.

If reprogramming does not complete and the “!?” icon displays as shown in Figure 5:

- Check battery voltage (12.0 - 15.5 V).
- Ignition is ON, engine OFF.
- External Bluetooth® devices are OFF.
- All electrical loads are OFF.
- Select retry and follow the on screen instructions.
- “Retry” may not go through on first attempt and can be selected more than once.

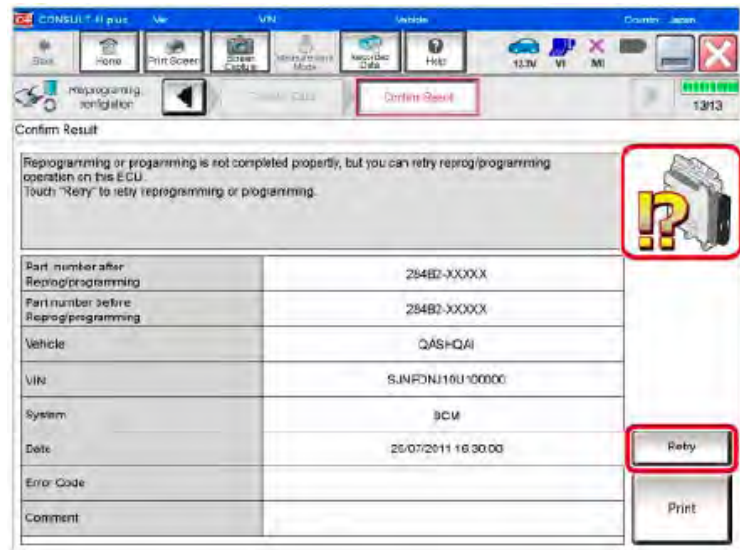


Figure 5

If reprogramming does not complete and the “X” icon displays as shown in Figure 6:

- Check battery voltage (12.0 - 15.5 V).
- CONSULT A/C adapter is plugged in.
- Ignition is ON, engine OFF.
- Transmission is in Park.
- All C-III plus / VI cables are securely connected.
- All C-III plus updates are installed.
- Select Home, and restart the reprogram procedure from the beginning.

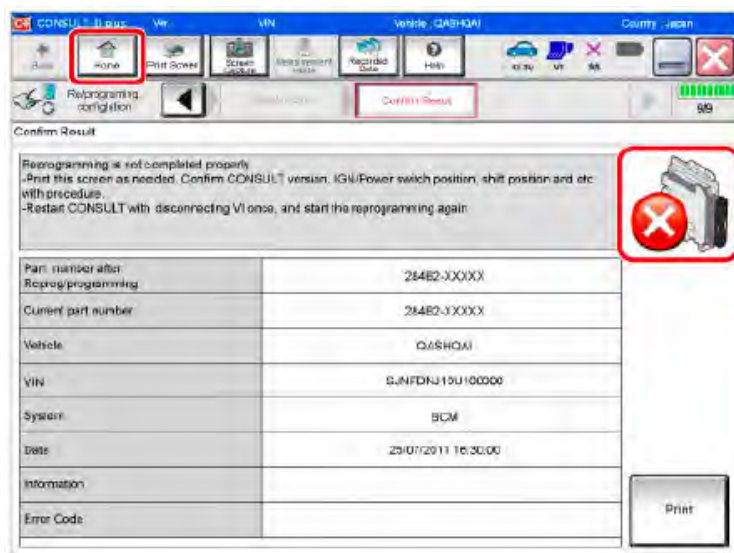


Figure 6

11. Follow the on-screen instructions to perform the following:

- **Throttle Valve Closed Position**

- **Idle Air Volume Learn (IAVL)**

NOTE:

- Listed below are common conditions required for IAVL to complete.
- If IAVL does not complete within a few minutes, a condition may be out of range.
- Refer to the appropriate Electronic Service Manual (ESM) for specific conditions required for the vehicle you are working on.
 - Engine coolant temperature: 70 -105° C (158 - 221°F)
 - Battery voltage: More than 12.9V (At idle)
 - Selector lever: P or N
 - Electric load switch: OFF (Air conditioner, headlamp, rear window defogger)
 - Steering wheel: Neutral (Straight-ahead position)
 - Vehicle speed: Stopped
 - Transmission: Warmed up

- **Accelerator Pedal Close Position Learning**

- **Erase DTCs**

Continue to the next page.

12. When the entire reprogramming process is complete, the screen in Figure 7 will display.
13. Verify the before and after part numbers are different.
14. Print a copy of this screen (Figure 7) and attach it to the repair order for warranty documentation.
15. Select Confirm.

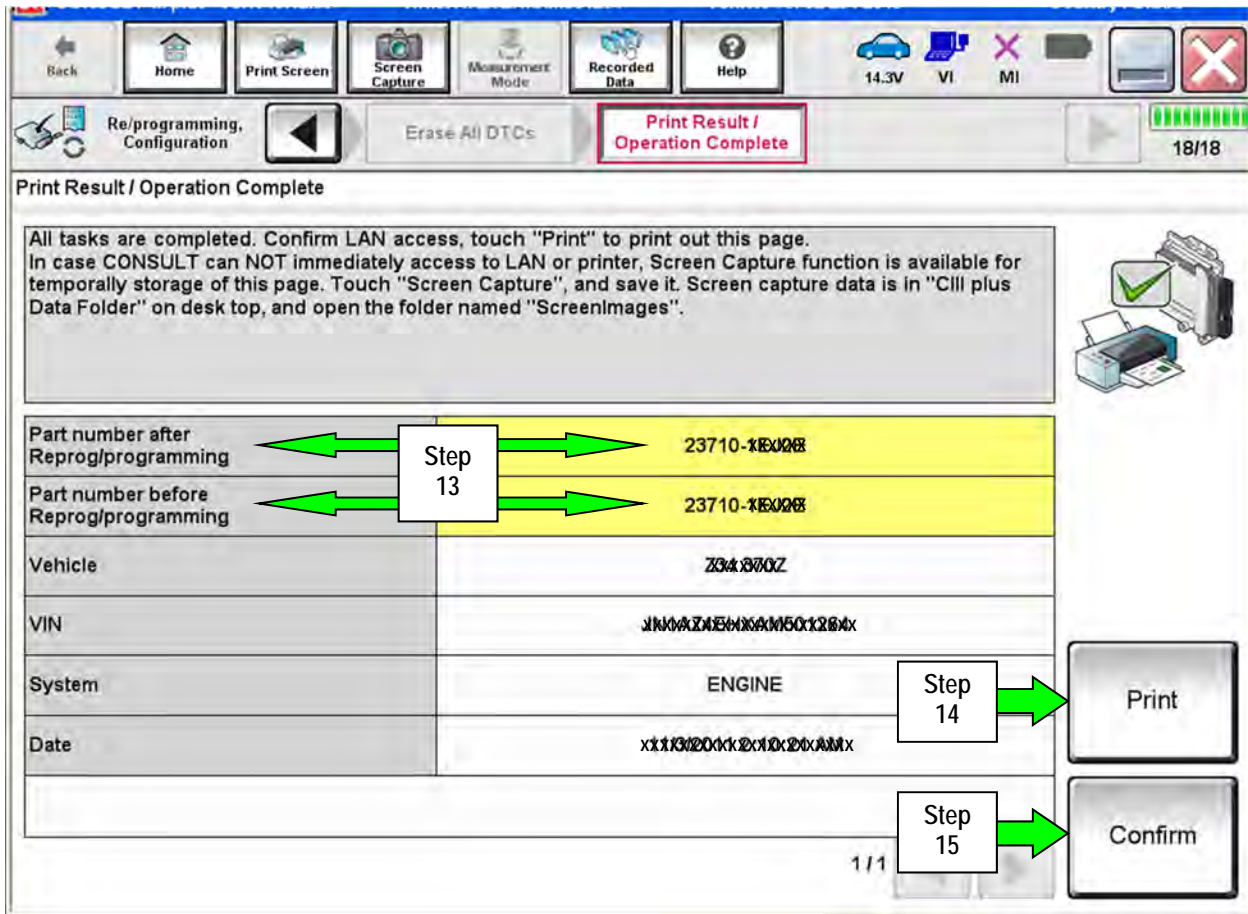


Figure 7

16. Close C-III plus.
17. Turn the ignition OFF.
18. Disconnect the plus VI from the vehicle.
19. Test drive the vehicle and make sure it operates correctly and the MIL is OFF.
 - If the MIL comes ON, go back to ASIST for further diagnostic information.
 - Diagnosis and repairs beyond ECM reprogramming are not covered by this bulletin.

CLAIMS INFORMATION

Submit a Primary Part (PP) type line claim using the following claims coding:

DESCRIPTION	PFP	OP CODE	SYM	DIA	FRT
Reprogram Engine Control Module	(1)	DE97AA	ZE	32	(2) (3)

- (1) Refer to the Electronic Parts Catalog and use the ECM assembly part number as the Primary Failed Part (PFP).
- (2) Reference the current Infiniti Warranty Flat Rate Manual and use the indicated FRT.
- (3) FRT allows adequate time to access DTCs and reprogram ECM. No other diagnostic procedures subsequently required. Do NOT claim any Diagnostic Op Codes with this claim.

AMENDMENT HISTORY

PUBLISHED DATE	REFERENCE	DESCRIPTION
March 6, 2017	ITB17-017	Original bulletin published.
February 28, 2019	ITB17-017a	APPLIED VEHICLES section and Table A revised.

