



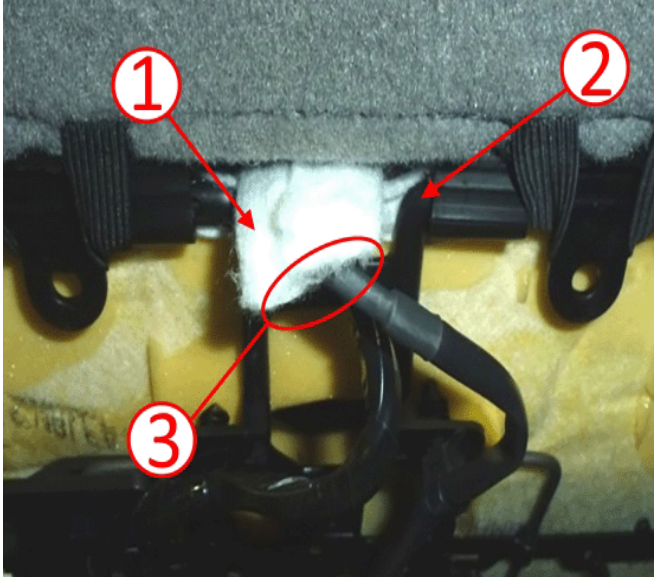
Service Bulletin

File in Section: -
 Bulletin No.: 17-NA-010
 Date: January, 2019

TECHNICAL

Subject: Passenger Seat Airbag Warning Message On - DTC B0074 or B101D Set

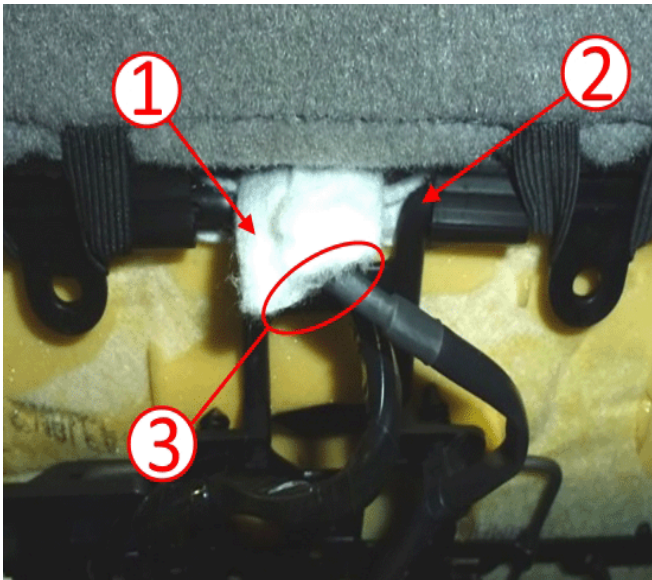
Brand:	Model:	Model Year:		VIN:		Engine:	Transmission:
		from	to	from	to		
Chevrolet	Impala (VIN 1)	2014	2016				
	Impala	2017	2018				

Involved Region or Country	North America, Korea, Middle East, Israel
Condition	Some customers may comment that the Service Airbag Warning Message is on. The technician may find one of the following DTCs set: <ul style="list-style-type: none"> • B0074: Passenger Presence Sensor Circuit Malfunction set in the Passenger Presence Module • B101D: Electronic Control Unit Hardware set in the Passenger Presence Module
Cause	This may be caused by the Passenger Presence System (PPS) sensor mat becoming loose or disengaged with seat usage over time.
Correction	 <p style="text-align: right;">4769349</p> <p>Important: DO NOT open the felt (1) used covering the electrical connectors. If DTC B0074 or B101D is set, then the technician should proceed to replace the Sensor Mat and Passenger Presence System Module.</p>

Service Procedure

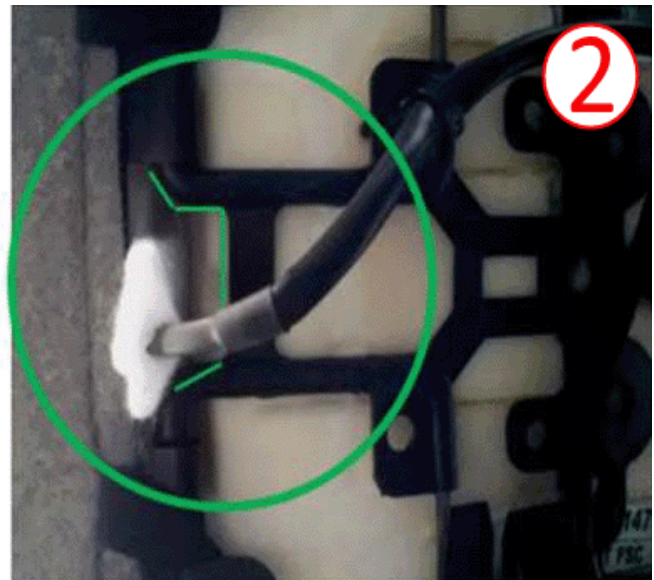
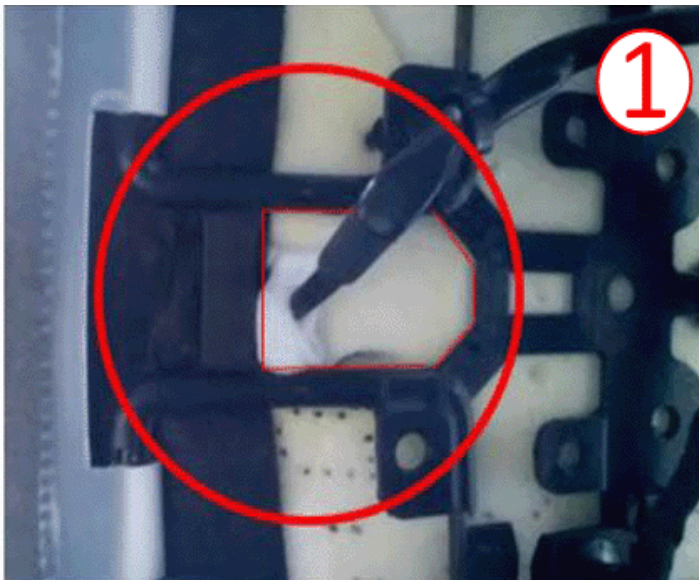
Important: When servicing DTC B0074 or B101D, ensure that the Passenger Presence Sensor Mat tail is correctly routed as shown in this bulletin.

1. Remove the passenger side seat. Refer to *Driver or Passenger Seat Removal and Installation* in SI.
2. Disconnect the electrical connectors, remove the seat cushion, and de-trim the cushion. Refer to *Front Seat Cushion Cover and Pad Replacement* in SI.



4769349

3. Using care, insert the PPS sensor mat pigtail (3) back through the foam opening making sure not to bend the sensor.
4. Install the cushion onto the seat frame.
 - The sensor tail must be routed through the rear suspension opening below the seat frame (2) hanging freely.
 - Validate the wiring harness (3) has proper movement.



4920551

Note: The graphic above depicts the incorrect pigtail harness route (1) and the correct pigtail harness route after repair (2).

5. Reconnect all electrical connectors and install the trim cover.
6. Install the passenger side seat.
7. Check the PPS Module for any DTCs in history status and clear DTC.
8. Perform the Passenger Presence System Preload Test (PPS Setup). Refer to *Passenger Presence System Preload Test (PPS Setup)* in SI.

Parts Information

Causal Part	Description	Part Number	Qty
X	Sensor Kit, Airbag Front Passenger Presence	23313742	1
X	Sensor Kit, Airbag Front Passenger Presence	23313743	1
X	MODULE, AIRBAG FRT PASS PRESENCE	23101685	1

Warranty Information

For vehicles repaired under warranty, use:

Labor Operation	Description	Labor Time
6450910	Airbag Front Passenger Presence Module Replacement	Use Published Labor Operation Time
6450950	Airbag Front Passenger Presence Sensor Replacement	

Version	
	4
Modified	<p>April 19, 2017 – Updated the Cause, Correction and Service Procedure.</p> <p>December 13, 2017 – Added the 2018 Model Year, updated the Service Procedure section and Warranty statement.</p> <p>January 02, 2019 – Updated the Correction, Service Procedure and Warranty Information sections and added Parts Information.</p>

