



# Service Bulletin

Bulletin No.: 19-NA-004

Date: January, 2019

## TECHNICAL

**Subject:** Squeak or Creak from Right Rear of Vehicle While Driving

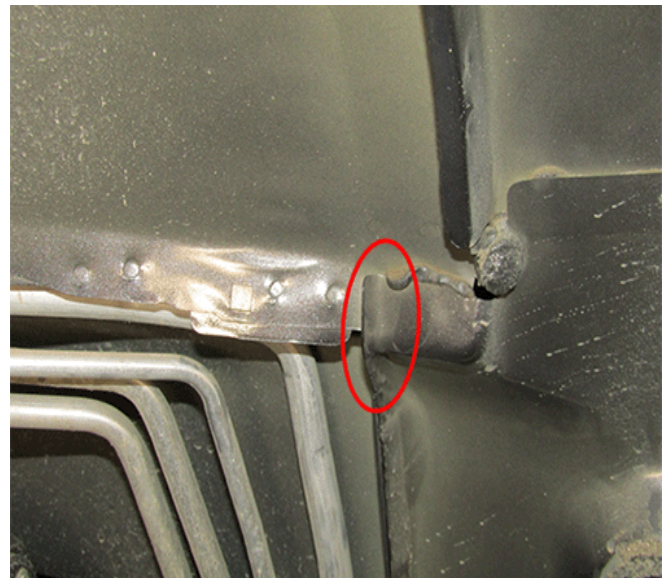
Brand:	Model:	Model Year:		VIN:		Engine:	Transmission:
		from	to	from	to		
Cadillac	Escalade Models	2018	2019			All	All
Chevrolet	Suburban, Tahoe	2018	2019				
GMC	Yukon Models	2018	2019				

<b>Involved Region or Country</b>	North America, N.A. Export Regions
<b>Additional Options (RPOs)</b>	
<b>Condition</b>	Customer may comment on hearing a squeak or creak coming from the right rear of vehicle while driving.
<b>Cause</b>	The cause of the condition may be sheet metal interference at a seam in the inner quarter wheel house, cause during the manufacturing process.
<b>Correction</b>	After verifying the customer's condition, gain access to the right quarter panel inner sheet metal and eliminate the interference, following the steps in the Service Procedure below.

### Service Procedure



5205840



5205844

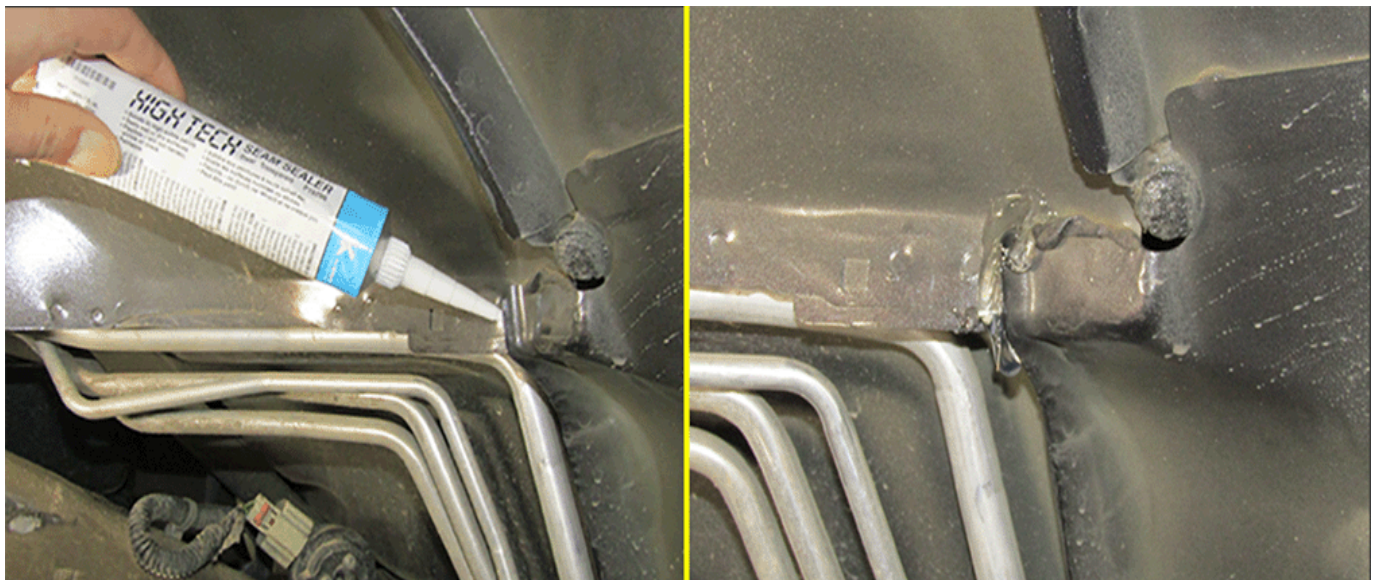
1. Remove the right rear wheelhouse liner (1). Refer to the appropriate *Rear Wheelhouse Liner Replacement* procedure, in SI.

2. Locate the sheet metal seam/gap shown in the graphic above.



5205847

3. Using a flat-blade screwdriver (1), or suitable tool, insert the tool vertically into the gap pushing upward until it engages with the upper sheet metal lip, above the gap.
4. Carefully pry outboard until the gap widens slightly.



5205852

5. Apply a bead of Kent® High-Tech Seam Sealer Clear P10200, or equivalent, into the gap and across the top seam.
6. Reinstall the right rear wheelhouse liner. Refer to the appropriate *Rear Wheelhouse Liner Replacement* procedure, in SI.
7. Verify condition has been eliminated.

### Parts Information

Causal Part	Description	Part Number	Quantity
N/A	Kent® High-Tech Seam Sealer Clear*	P10200	As needed

\* We believe this source and their products to be reliable. There may be additional manufacturers of such products/materials. General Motors does not endorse, indicate any preference for, or assume any responsibility for the products or material from this firm or for any such items that may be available from other sources.

### Warranty Information

For vehicles repaired under the Bumper-to-Bumper coverage (Canada Base Warranty coverage), use the following labor operation. Reference the Applicable Warranties section of Investigate Vehicle History (IVH) for coverage information.

Labor Operation	Description	Labor Time
1481138*	Eliminate Right Inner Quarter Panel Sheet Metal Interference	0.5 hr

\*This is a unique Labor Operation for Bulletin use only.

Version	1
Modified	Released January 09, 2019

