

## SERVICE BULLETIN

<b>Reference number:</b>	<b>SB-01-1171</b>	<b>Issued: 4 February, 2019</b>
<b>Subject:</b>	<b>Front-Pad Wear-Warning-Lead Re-Routing</b>	
<b>Model(s):</b>	<b>DB11, Vantage 19MY and DBS Superleggera</b>	
<b>VIN Range:</b>	<b>All</b>	
<b>Applicable to:</b>	<b>All Dealers</b>	
<b>Distribute to:</b>	<b>After Sales Manager</b> <b>Executive Manager</b> <b>Service Manager</b> <b>Sales Manager</b>	<b>Warranty Staff</b> <b>Technician(s)</b> <b>Parts Staff</b>

### Reason for this Service Bulletin

On some vehicles, a wheel can touch the Front-Brake-Pad Wear-Warning-Lead and cause damage. This can occur when the vehicle moves and the steering wheel is turned to the maximum steering angle.

### Workshop Procedure

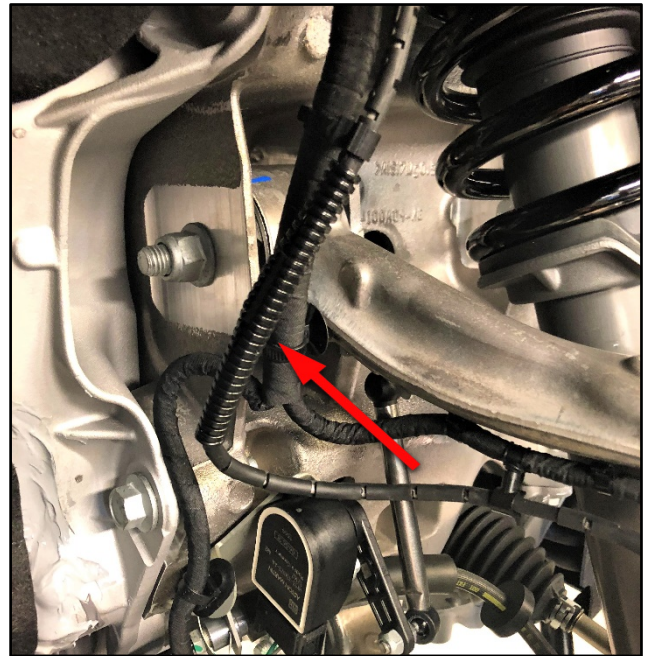
1. Examine the Wear Warning Lead for damage (refer to Figure 1). Inspection can be done with the wheels removed or with the steering wheel turned to the maximum steering angle.  
If there is no indication of contact with the tyre, this Service Bulletin can be ignored.  
If there is an indication of contact with the tyre, go to Step 2.



**Figure 1**

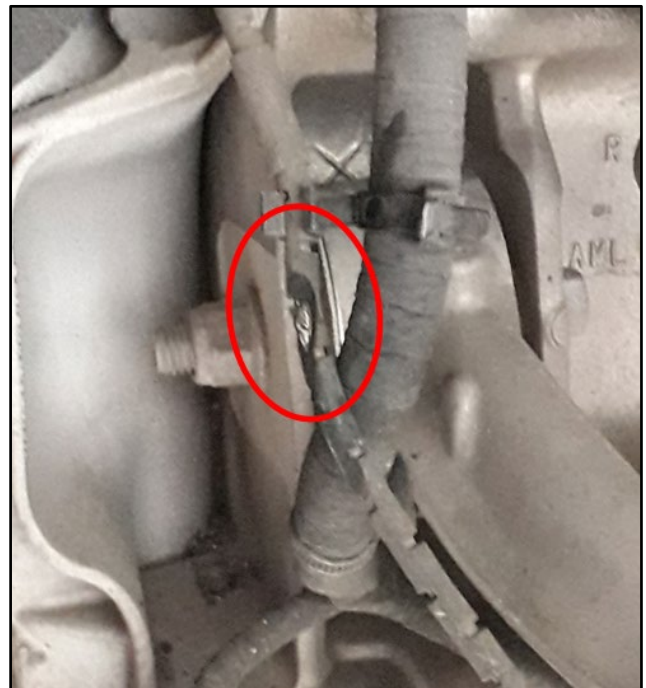
2. Remove the front wheels (refer to Workshop Manual Procedure 04.04.ED).

3. Examine the tubing of the lead. If the type of tubing is split tubing (refer to Figure 2) remove the tubing and discard it.



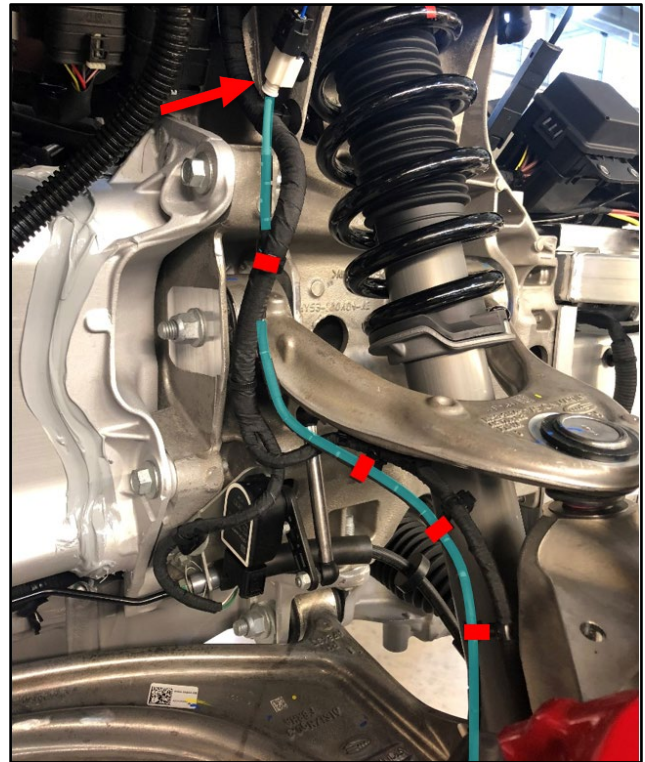
**Figure 2**

4. Examine the lead for damage. If the outer protection is damaged, or the core can be seen (refer to Figure 3), remove the lead. Get a replacement part and go to Step 7.



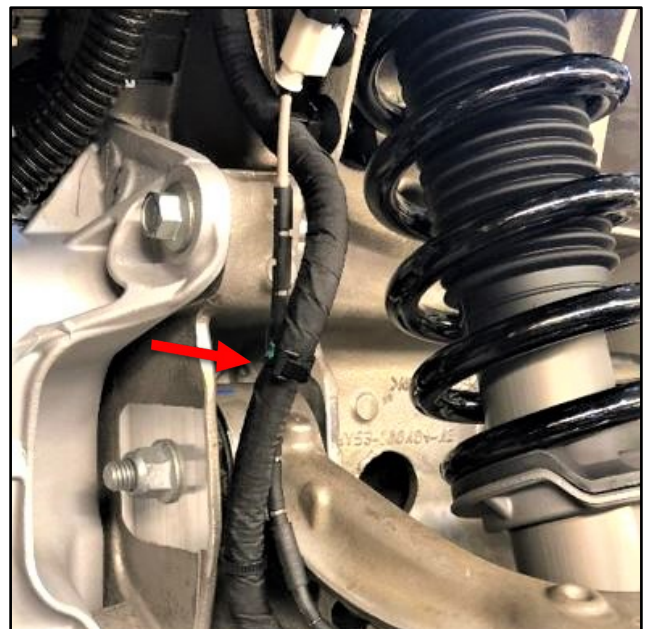
**Figure 3**

5. Disconnect the white plug (refer to Figure 4).



**Figure 4**

6. Remove the four harness clips that hold the lead in place (refer to red marks in Figure 4). Leave the lead attached at the caliper end.
7. Make sure the routing of the lead is on the inner side of the electrical harness (refer to Figure 5).



**Figure 5**

8. Connect the white plug to the wiring loom (refer to A, Figure 6).

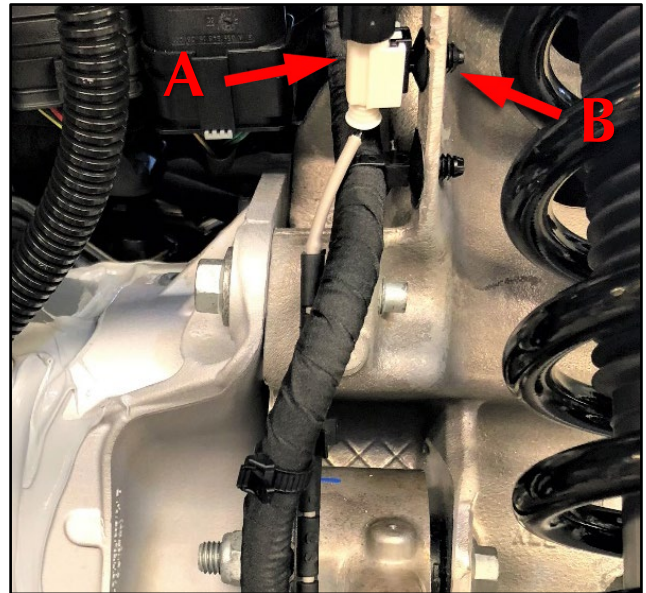


Figure 6

9. Attach the white plug to the body hole (refer to B, Figure 6).
10. Attach the lead with four harness clips. Start this procedure from the end with the white plug (refer to Figure 7).  
Move the remaining length of lead in the direction of the caliper.

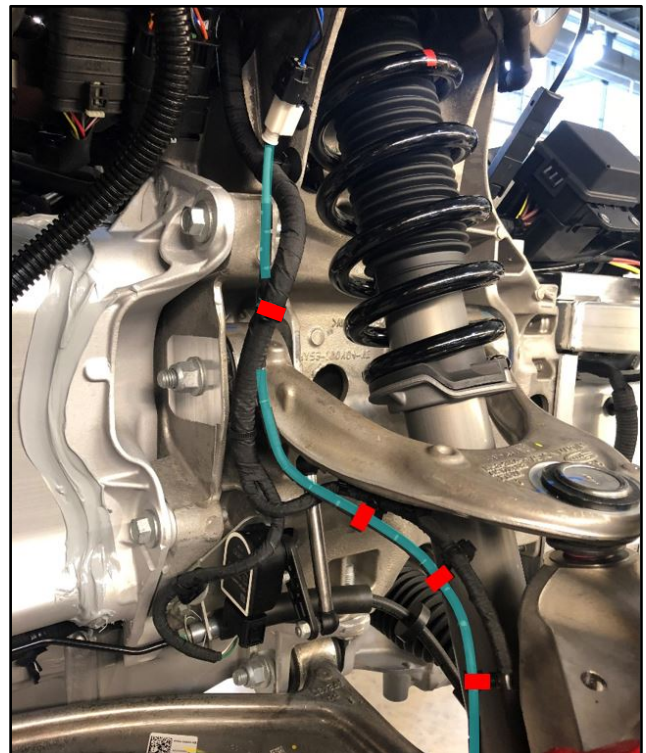


Figure 7

11. Allow the remaining lead length to collect by the caliper (refer to Figure 8).



Figure 8

12. Make sure the pad wear sensor is attached to the brake pad (refer to Figure 9).

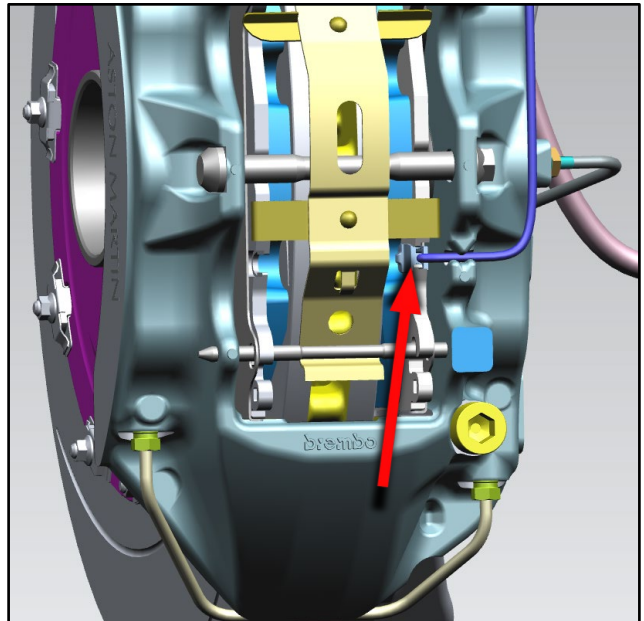


Figure 9

- 13. Make sure the grey area of the sleeve is pushed into the caliper body slot (refer to Figure 10).

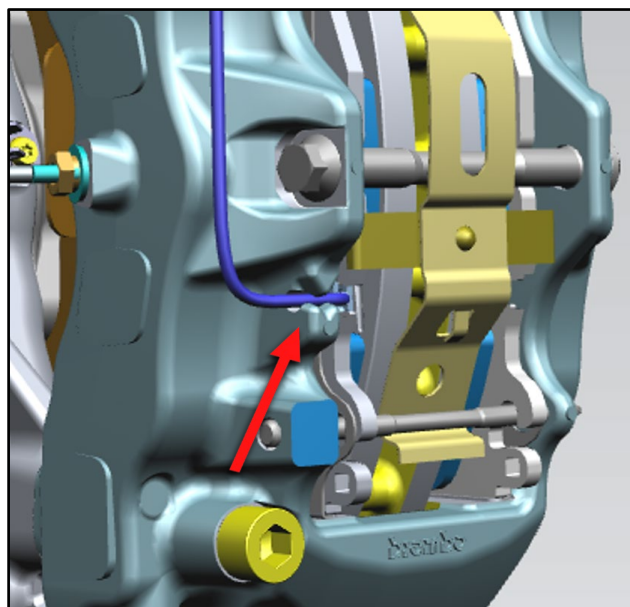


Figure 10

- 14. Make sure the black rubber loop is over the caliper bleed nipple (refer to Figure 11).

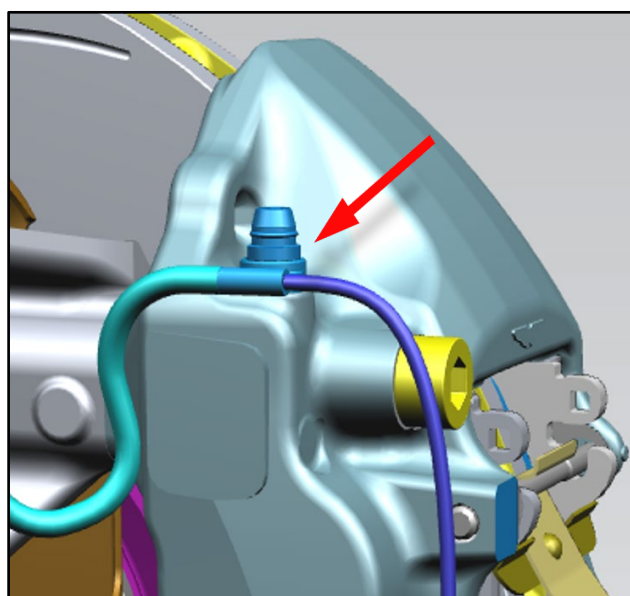


Figure 11

**Part Data**

Description	Part Number	Quantity
PAD WEAR LEAD FRONT	HY53-2L507-AA	1

**Warranty Data**

**Procedure and Labour Time**

Description	Labour Time	ROT Code
Inspect the lead	0.05 hours	06.03.AS
Remove and install new part	0.20 hours	06.03.AQ

**Failure Mode Description**

Select the failure modes that follow when you make a claim through the Warranty system:

<b>Subsystem</b>	<b>Location</b>	<b>Component</b>	<b>Mode of Failure</b>
CHASSIS	BRAKES-BASE-FRONT-LHS	FRONT-BRAKE CALIPER ASSY-PAD-WEAR SENSOR	INOPERATIVE-DAMAGED
CHASSIS	BRAKES-BASE-FRONT-RHS	FRONT-BRAKE-CALIPER ASSY-PAD-WEAR SENSOR	INOPERATIVE-DAMAGED

If you have any questions related to this Service Bulletin, please contact: Aston Martin Technical Services  
on: +44 (0) 1926 644720, email: askamtech@astonmartin.com,  
Or contact your After Sales Manager.

The English version of this Service Bulletin is written in  
Simplified Technical English to ASD-STE100™.