

Pleasure-Way

Ascent

Side Roll Up Screen Installation Guide





Parts List

- Roll up side screen door



Supplies Needed

- Roll of hook Velcro
- Strip of loop Velcro
- Finishing screws
- Self-tapping screws
- Drill
- Scissors
- Rubber Mallet (not pictured)
- Flat Plastic Wedge (not pictured)



Finishing screws (top) Self-tapping screws (bottom)





Attach strip of loop Velcro to the edge of the entrance step, along the rear portion.

Note: do not cut the Velcro strip to size yet, wait until you attach the screen.



Attach hook Velcro (from roll) to the inside pillar located in the entrance.

Note: you will need to peel back the weatherstripping at the top of the pillar so you can attach the Velcro in a straight line.

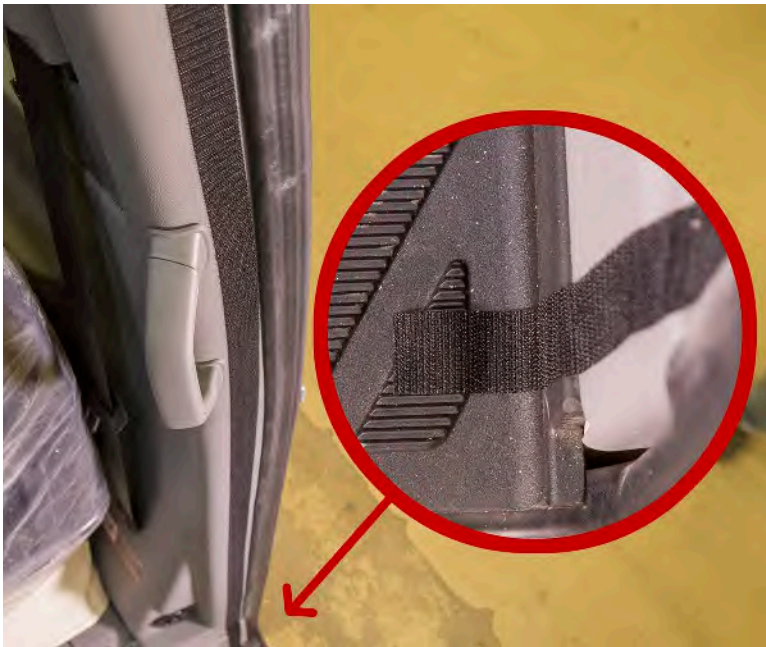


Note: this is what the Velcro spacing should look as it passes the grab handle.



Continue to attach the Velcro down to the bottom of the pillar.

Note: leave approx. 1/4" gap between the Velcro and the weatherstripping.



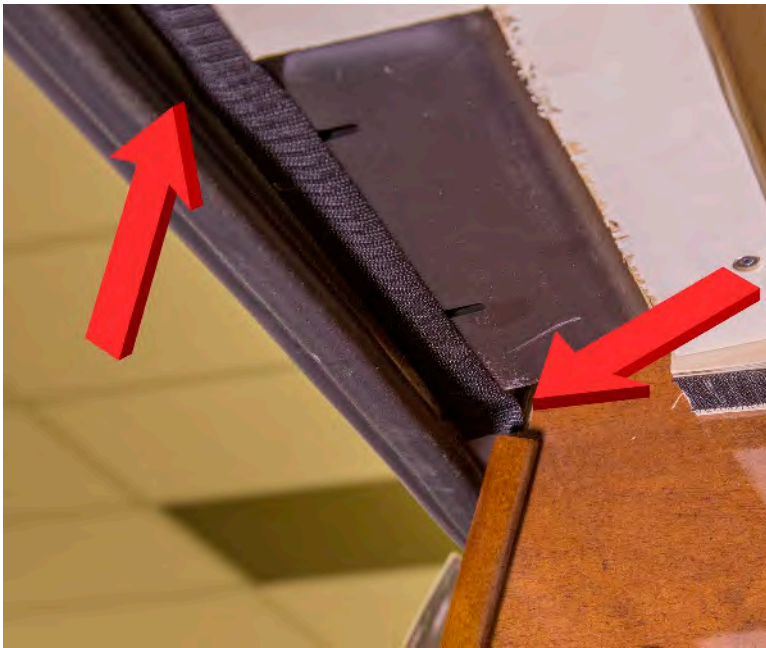
Trim the Velcro so it continues onto the entrance platform approx. 2".

Note: this image will also give you another look at the path the Velcro strip should take.



Attach Velcro strip directly above entrance pillar and fit it up against the weatherstripping.

Note: you will need to remove the grey bulkhead located at the top of the door. It is attached with Velcro and can be removed easily.



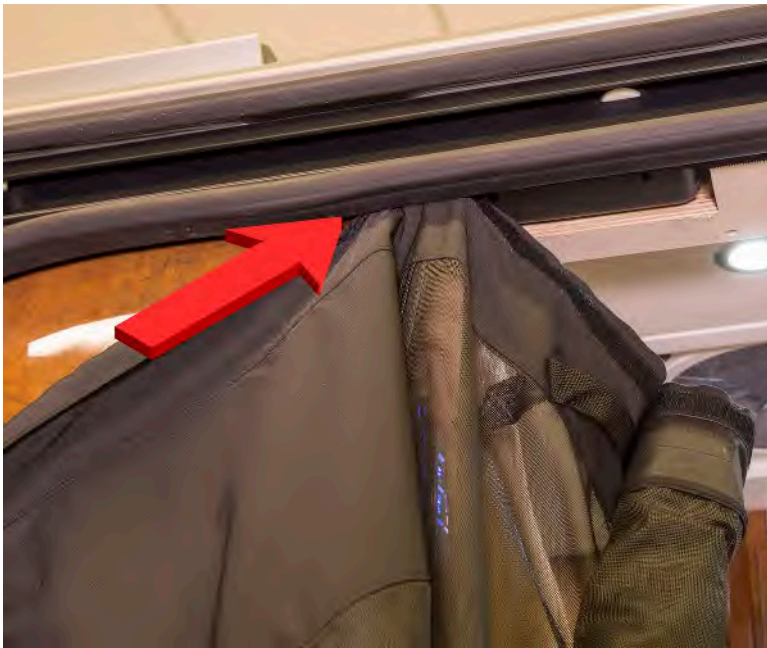
Continue Velcro strip along roofline and trim so it ends at the upper cabinet.



Roll out screen door and locate the Velcro strip that runs along the top.



Note: the Velcro tab that is sewn into the top of the screen is where you will begin to attach the screen to the van. Line up the edge of the Velcro tab, referenced in the image, with the edge of the Velcro strip you just attached to the roof line.



Attach screen to Velcro along the roof.

Note: line up the Velcro tab sewn into the screen, referred to in the previous image, with the Velcro attached to the roofline.



Fasten the screen with one finishing screw to hold in place.

Note: place the screw so it fastens into the plywood panel and not the plastic panel beside it.



Remove weatherstripping from the pillar behind the kitchen counter.



Attach Velcro strip from top of the kitchen counter to the upper cabinet along the wall panel.

Note: leave approx. ¼” gap between the pillar and the Velcro.



Note: this strip of Velcro is what you will attach to the inside wall of the van, as described in the previous step.



Pull the inside screen flap tight around the pillar and tuck corner in behind the counter top.



Fasten corner of screen flap to the wall panel with finishing screw.



Fasten top of screen flap to the wall panel with finishing screw.



Fasten screen flap with two more finishing screws.

Note: screws should be positioned in the middle of the Velcro strip.



Fasten screen on opposite side of the door with one finishing screw to hold in place.

Note: ensure the Velcro on the screen fits squarely with the Velcro strip along the roof.



Fasten the screen with two more finishing screws along the roof.



Remove weatherstripping from door frame.



Locate foam roll sewn into the screen and fit it into the gap between the kitchen and the door frame.



Note: ensure the foam roll is pushed as far back as it can fit in the gap.



Note: this is what the corner of the screen should look like.



Place weatherstripping back on the door frame using a rubber mallet.



Note: the screen should be tightly tucked into the corner of the door, but you may be left with a few wrinkles.



Attach the bottom corner of the screen to the Velcro along the front door frame.

Note: line up the Velcro on the screen so it fits squarely with the Velcro on the door frame.



Fasten corner of screen with two finishing screws.

Note: fasten directly into the corner of the screen first and then proceed to add the second screw on the flat section. Additionally, trim the excess Velcro that is showing beyond the screen.



Attach screen to the rest of the Velcro on the front pillar. Remember to line-up the Velcro pieces so they fit square.

Note: allow the screen edge to overlap the weatherstripping for now, as you will be fitting it underneath the weatherstripping in an up coming step.



Note: this is what the fit of the screen should look like by the grab handle.



Fasten inside corner of the screen with self-tapping screw.

Note: ensure the screen is fit tightly along the upper corner of the door and place the screw in the middle of the Velcro.



Fasten screen with one more self-tapping screw.



Re-install the grey bulkhead. Start by wedging the bottom corner in behind the door pillar and front headliner.



Fit the other end of the bulkhead firmly back onto the Velcro.



Note: ensure the corner is properly fitted back into its original position.



Fasten screen approx. 10" above the bottom with finishing screw.

Note: for all screws along the inside of the door frame here, ensure the screws are positioned in the middle of the Velcro strip.

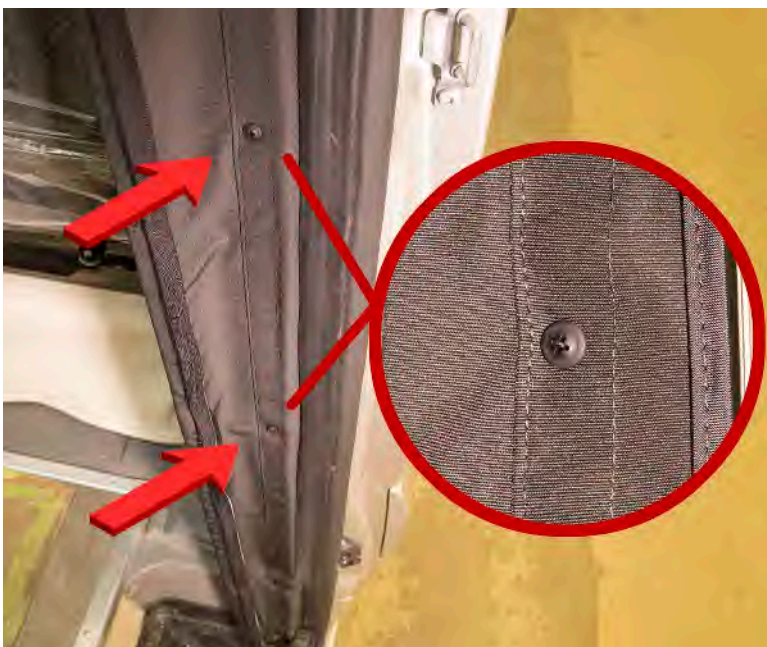


Fasten screen with second finishing screw approx. 1" above previous placement.



Fasten top corner of the screen with finishing screw.

Note: ensure screen is fitting tight and that the screw is placed right above the curve in the door frame.



Fasten screen with three more evenly spaced finishing screws.



Remove weatherstripping and fit edge of screen in behind the door frame.



Re-install weatherstripping with rubber mallet.

Note: ensure the screen edge is tucked in behind the weatherstripping.



Note: this is what the screen should look like once the weatherstripping is back on.

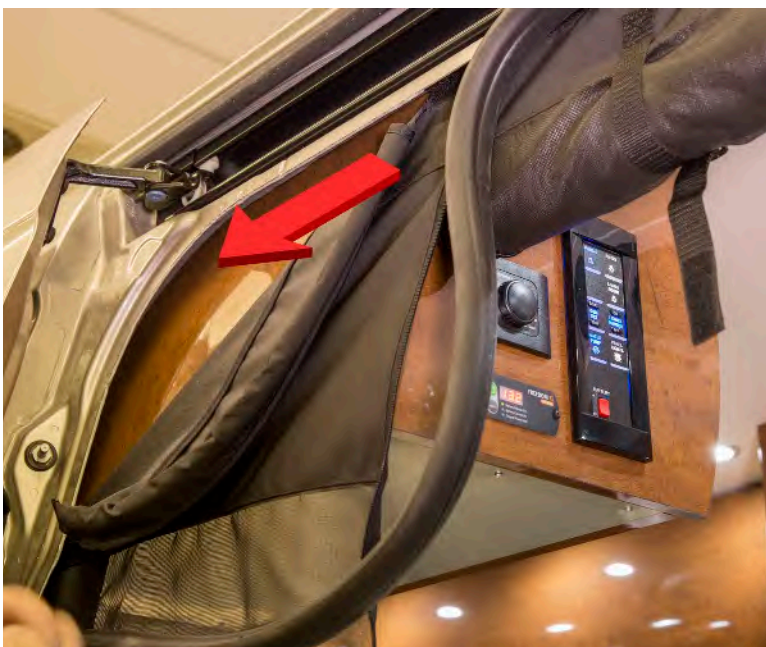


Fasten opposite side of the screen with finishing screws.

Note: once the screen is pulled tightly into place and fitted on the loop Velcro strip, you can trim the excess Velcro.



Fasten bottom of screen with two more evenly spaced finishing screws.



Remove weather stripping along top corner of door frame.



Attach two pieces of hook and loop Velcro to the upper cabinet.

Note: use remaining loop Velcro and attach it to two pieces of 5” long hook velcro. You will have two pieces of Velcro with the tape on both sides.



Fit top section of the screen into the door frame.



Fit corner section of the screen into the door frame.



Note: ensure the Velcro is stuck to the screen and that the screen is fitting tight in the door frame.



Re-install the weatherstripping with the rubber mallet.



