

Clicking Noise From Front Wheel Area During Slow Speed Turns (F Sport 2WD)

Service Category Brake

Section Brake (front)

Market USA

Lexus Supports
ASE Certification 

Applicability

YEAR(S)	MODEL(S)	ADDITIONAL INFORMATION
2016 - 2017	GS200T, RC200T	
2018 - 2019	GS300	
2013 - 2019	GS350	
2013 - 2018	GS450H	
2016 - 2019	RC300	
2015 - 2019	RC350	

REVISION NOTICE

February 4, 2019 Rev2:

- Applicability has been updated to include 2019 model year GS 300, GS 350, RC 300 and RC 350 vehicles.
- The Introduction and Repair Procedure sections have been updated.

Any previous printed versions of this bulletin should be discarded.

June 26, 2018 Rev1:

- Applicability has been updated to include 2018 model year GS 300 and 2016 – 2018 model year RC 300 vehicles.

Any previous printed versions of this bulletin should be discarded.

SUPERSESSION NOTICE

The information contained in this bulletin supersedes Service Bulletin No. L-SB-0100-16.

- The entire bulletin has been updated.

Service Bulletin No. L-SB-0100-16 is obsolete and any printed versions should be discarded.

Clicking Noise From Front Wheel Area During Slow Speed Turns (F Sport 2WD)

Introduction

Some 2013 – 2019 model year Lexus vehicles equipped with 2WD drivetrain and the F Sport package may exhibit a clicking noise from the front wheel area during a slow (parking lot) speed turn. Follow the Repair Procedure in this bulletin to address this condition.

Refer to the video link below for an example of the clicking noise condition.

[Clicking Noise Example](#)

NOTE

These vehicles are originally equipped with a lightweight two-piece aluminum rotor assembly. The clicking noise that can be heard during sharp turns is a normal condition. For customers who find this objectionable, an alternative steel rotor is available. Before performing this repair, it is recommended to review the visual differences of the steel rotor with the customer.

Figure 1. Before (Aluminum)



Figure 2. After (Steel)



Figure 3. Before* (Aluminum)



Figure 4. After* (Steel)



*Example of one wheel type for the vehicle. Other wheel types may have slightly different results.

Clicking Noise From Front Wheel Area During Slow Speed Turns (F Sport 2WD)

Warranty Information

OP CODE	DESCRIPTION	TIME	OFF	T1	T2
BR1611	Install Steel Rotors, New Brake Pads, and Painted Front Axle Hub Shim	1.6	43512-30370 43512-30371 43516-30060 43516-30061	91	41

APPLICABLE WARRANTY

- This repair is covered under the Lexus Basic Warranty. This warranty is in effect for 48 months or 50,000 miles, whichever occurs first, from the vehicle's in-service date.
- Warranty application is limited to occurrence of the specified condition described in this bulletin.

Parts Information

PART NUMBER		PART NAME	QTY
PREVIOUS	NEW		
43512-30370 43512-30371	43512-WY010	Disc, FR RH (Steel Center)*	1
43516-30060 43516-30061	43516-WY020	Disc, FR LH (Steel Center)*	1
04465-30491		Pad Kit, Disc Brake, Front	1
47791-30020		Plate, Disc Brake AIR Guide, RH**	2

*Both rotors MUST be replaced.

**The part number includes one shim.

**Even though the part description says "RH," this shim is the same for the right and left sides.

Repair Procedure

1. Is this vehicle an F Sport 2WD vehicle?
 - **YES** — Continue to step 2.
 - **NO** — This bulletin does NOT apply. Continue diagnosis using the applicable Repair Manual.
2. Does the vehicle exhibit a clicking noise from the front wheel area during a slow speed turn as described in the Introduction?
 - **YES** — Continue to step 3.
 - **NO** — This bulletin does NOT apply. Continue diagnosis using the applicable Repair Manual.

Clicking Noise From Front Wheel Area During Slow Speed Turns (F Sport 2WD)

Repair Procedure (continued)

3. Install the front axle hub shim (disc brake AIR guide right-hand plate), updated (steel one-piece) front rotors, and brake pad kit as shown below.

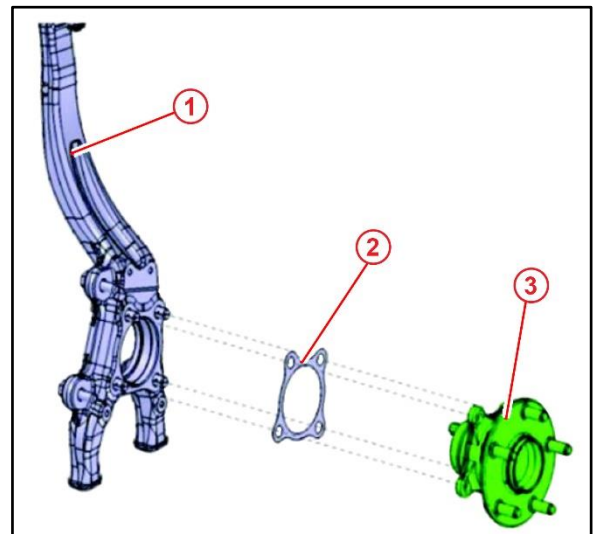
A. Remove the front hub bearing.

Refer to TIS, applicable model and model year Repair Manual:

- [2016](#) / [2017](#) GS200t:
Drivetrain – Axle/Differential – “Axle and Differential: Front Axle Hub: Removal”
- [2018](#) / [2019](#) GS300:
Drivetrain – Axle/Differential – “Axle and Differential: Front Axle Hub: Removal”
- [2013](#) / [2014](#) / [2015](#) / [2016](#) / [2017](#) / [2018](#) / [2019](#) GS350:
Drivetrain – Axle/Differential – “Axle and Differential: Front Axle Hub: Removal”
- [2013](#) / [2014](#) / [2015](#) / [2016](#) / [2017](#) / [2018](#) GS450h:
Drivetrain – Axle/Differential – “Axle and Differential: Front Axle Hub: Removal”
- [2016](#) / [2017](#) RC200t:
Drivetrain – Axle/Differential – “Axle and Differential: Front Axle Hub: Removal”
- [2016](#) / [2017](#) / [2018](#) / [2019](#) RC300:
Drivetrain – Axle/Differential – “Axle and Differential: Front Axle Hub: Removal”
- [2015](#) / [2016](#) / [2017](#) / [2018](#) / [2019](#) RC350:
Drivetrain – Axle/Differential – “Axle and Differential: Front Axle Hub: Removal”

B. Install the painted brake shim between the hub bearing and knuckle as shown.

Figure 5.



1	Knuckle
2	Shim
3	Hub Bearing

Clicking Noise From Front Wheel Area During Slow Speed Turns (F Sport 2WD)

Repair Procedure (continued)

C. Reinstall the hub bearing, NEW rotors, and NEW brake pads.

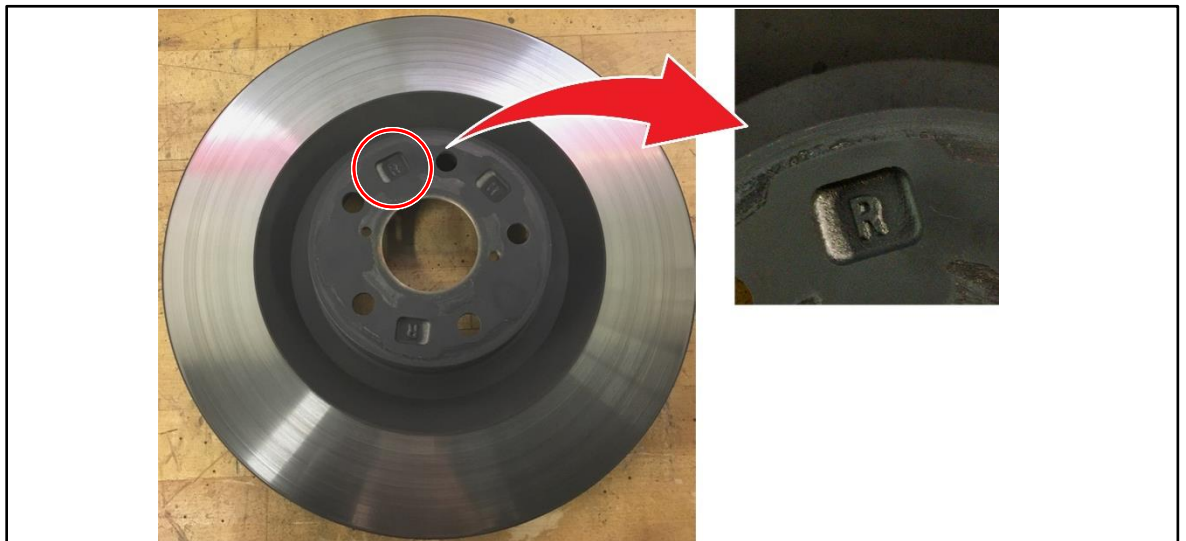
Refer to TIS, applicable model and model year Repair Manual:

- [2016](#) / [2017](#) GS200t:
Drivetrain – Axle/Differential – “Axle and Differential: Front Axle Hub: Installation”
- [2018](#) / [2019](#) GS300:
Drivetrain – Axle/Differential – “Axle and Differential: Front Axle Hub: Installation”
- [2013](#) / [2014](#) / [2015](#) / [2016](#) / [2017](#) / [2018](#) / [2019](#) GS350:
Drivetrain – Axle/Differential – “Axle and Differential: Front Axle Hub: Installation”
- [2013](#) / [2014](#) / [2015](#) / [2016](#) / [2017](#) / [2018](#) GS450h:
Drivetrain – Axle/Differential – “Axle and Differential: Front Axle Hub: Installation”
- [2016](#) / [2017](#) RC200t:
Drivetrain – Axle/Differential – “Axle and Differential: Front Axle Hub: Installation”
- [2016](#) / [2017](#) / [2018](#) / [2019](#) RC300:
Drivetrain – Axle/Differential – “Axle and Differential: Front Axle Hub: Installation”
- [2015](#) / [2016](#) / [2017](#) / [2018](#) / [2019](#) RC350:
Drivetrain – Axle/Differential – “Axle and Differential: Front Axle Hub: Installation”

NOTE

NEW steel one-piece rotors do NOT have paint marks as shown in the Repair Manual. They are marked with an “L” or an “R” to show which location to install.

Figure 6.



4. Test-drive the vehicle to confirm the clicking noise is no longer present.