



SERVICE BULLETIN

Classification:	Reference:	Date:
EC19-005	NTB19-011	February 28, 2019

2016 – 2018 TITAN XD; MIL ON WITH DTC P2048 STORED

APPLIED VEHICLES: 2016 – 2018 Titan XD (A61)
APPLIED ENGINE: Cummins 5.0L Diesel

IF YOU CONFIRM

The MIL is ON and DTC P2048 (REDUCTANT INJECTION VALVE CIRCUIT LOW 1/1) is stored.

ACTION

Reprogram the ECM per the **SERVICE PROCEDURE** in this bulletin.

- Refer to **SERVICE PROCEDURE** on the next page to confirm if reprogramming is needed.
- Save Computer Data with CONSULT-III plus (C-III plus).
- If this bulletin applies, continue with **ECM Reprogramming** procedure.
- Write Saved Data with CONSULT-III plus.

IMPORTANT: The purpose of ACTION (above) is to give you a quick idea of the work you will be performing. You **MUST** closely follow the entire **SERVICE PROCEDURE** as it contains information that is essential to successfully completing this repair.

Nissan Bulletins are intended for use by qualified technicians, not 'do-it-yourselfers'. Qualified technicians are properly trained individuals who have the equipment, tools, safety instruction, and know-how to do a job properly and safely. NOTE: If you believe that a described condition may apply to a particular vehicle, DO NOT assume that it does. See your Nissan dealer to determine if this applies to your vehicle.

SERVICE PROCEDURE

1. Using C-III plus, confirm the current ECM part number and write it on the repair order.
 - If it matches one of the part numbers in Table A, below, proceed to step 2 on the next page.
 - If there is no match, this bulletin does not apply. Close C-III plus and refer to ASIST for further diagnostic information.

Table A

MODEL	CURRENT ECM PART NUMBER: 23710-
2016 Titan XD	EZ41C, EZ41D, EZ41E EZ42A, EZ42B, EZ42C, EZ42D, EZ42E EZ43A, EZ43B EZ45D, EZ45E
2017 Titan XD	EZ44D, EZ44E EZ45A, EZ45B, EZ45C, EZ45D, EZ45E
2018 Titan XD	9FT9A EZ47E, EZ47D, EZ47C

Save Computer Data

2. Connect the CONSULT PC to the vehicle.
3. Open / start C-III plus.
4. Turn the ignition ON, with engine OFF (engine not running).
5. Wait for the plus VI to be recognized.
 - The **Serial No.** will display when the plus VI is recognized.
6. Select **Diagnosis (One System)**.

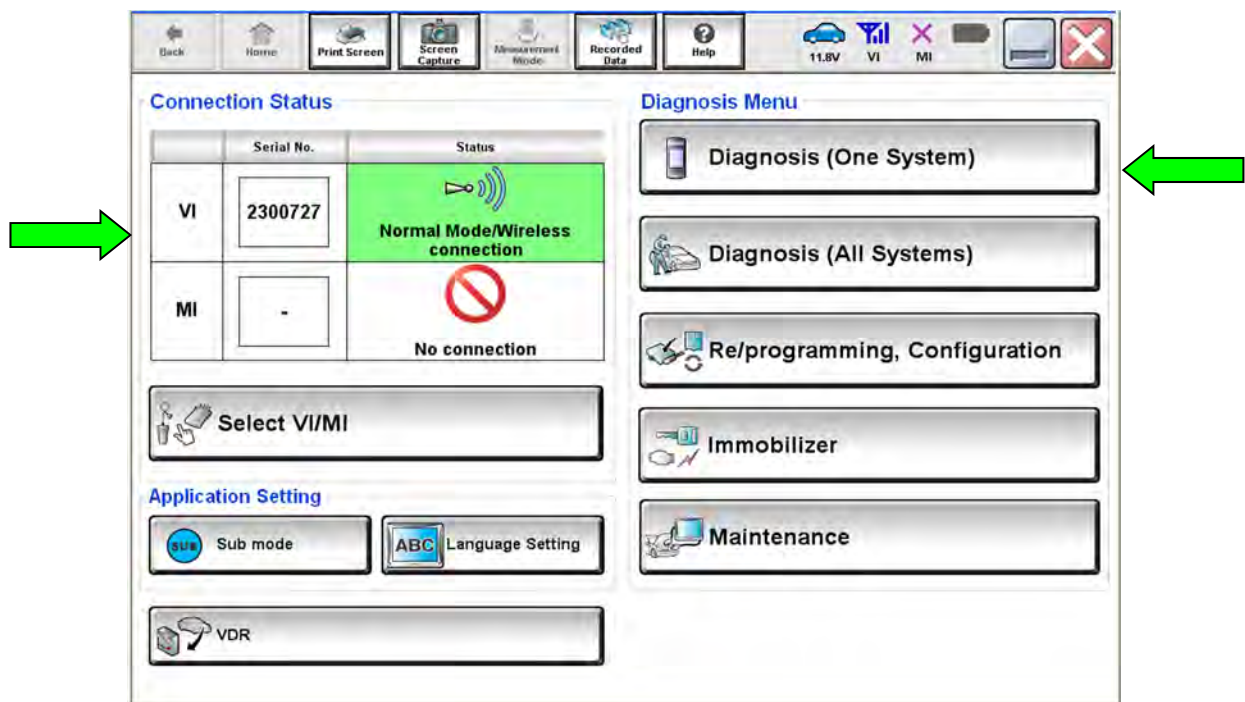


Figure 1

7. Navigate C-III plus to Engine > Work Support (see Figure 2).
8. Select **SAVE COMPUTER DATA**.
9. Select **Start**.

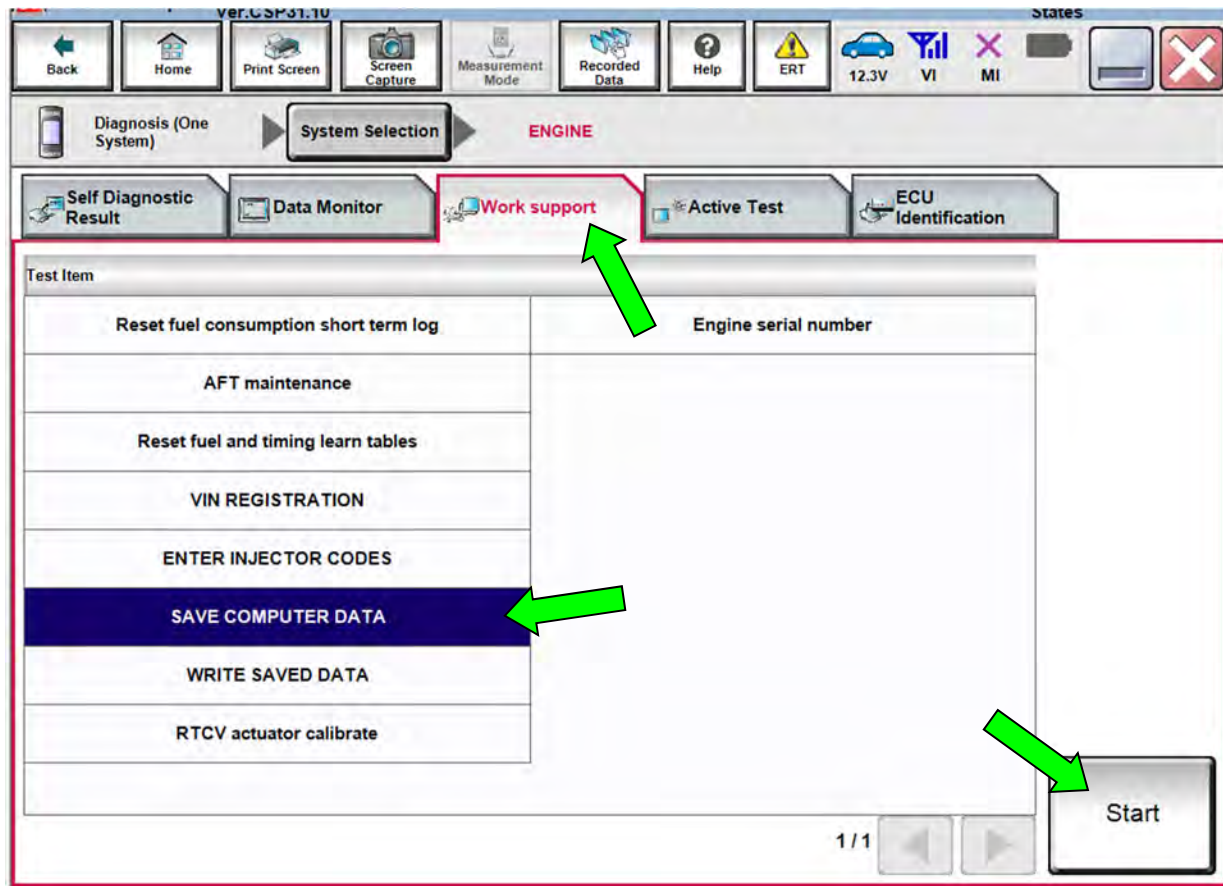


Figure 2

NOTE:

- After selecting Start, a screen message may appear that says:
Latest diagnostic tool update must be used before saving the data, otherwise there is a risk that the data entry will not work.
- If the above message appears, select Continue.

10. Make sure the ignition is ON and the engine is OFF (engine not running).

11. Select **Confirm**.

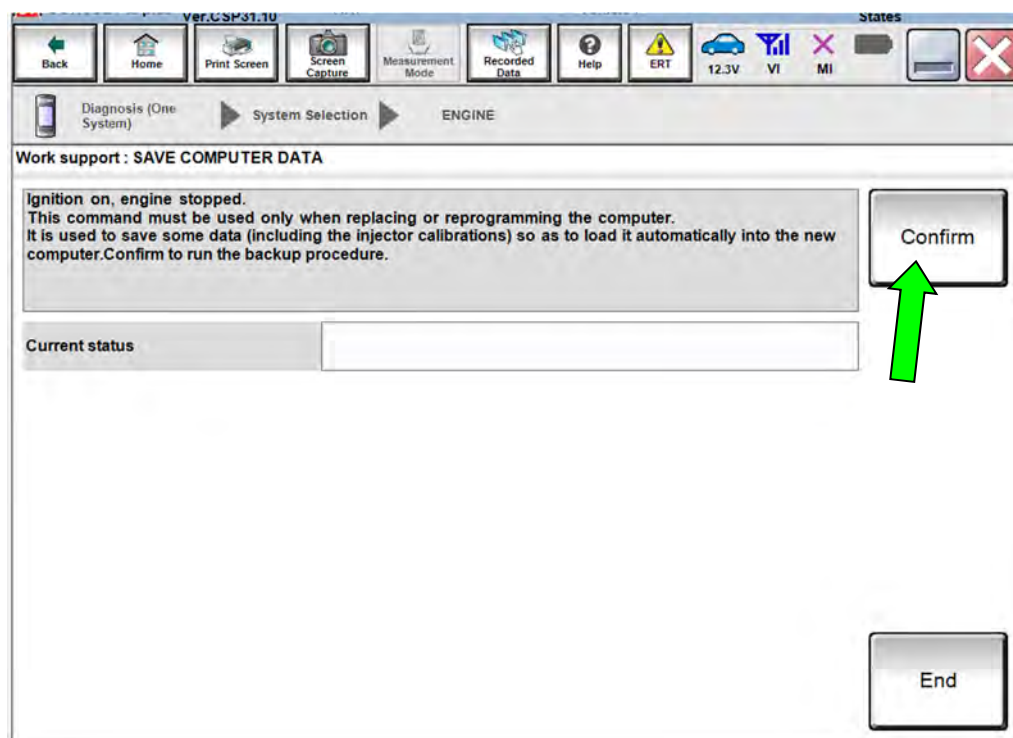


Figure 3

12. Select **End**.

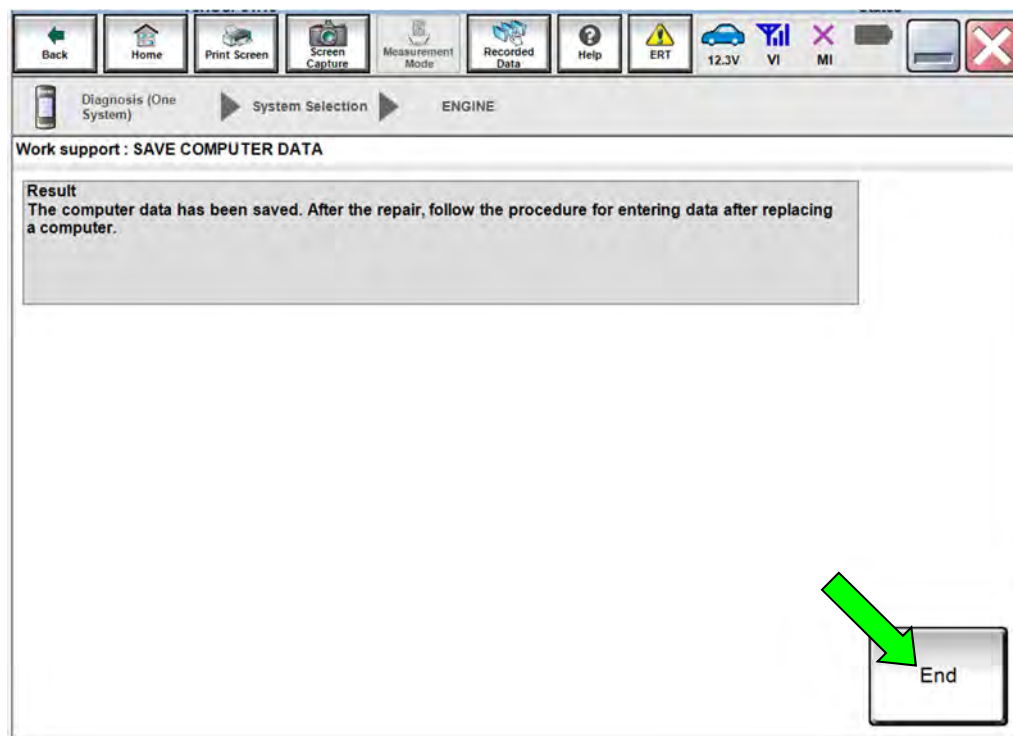


Figure 4

SERVICE PROCEDURE (continued)

REPROGRAM THE ECM

IMPORTANT: Before starting the reprogramming procedure, make sure:

- ASIST on the CONSULT PC has been synchronized (updated) to the current date.
- All CONSULT-III plus (C-III plus) software updates (if any) have been installed.
- The CONSULT PC is connected to the Internet (Wi-Fi or cable).

NOTE:

- If you are not familiar with the reprogramming procedure, *click here*. This will link you to the "CONSULT- III plus (C-III plus) ECM Reprogramming" general procedure.

CAUTION:

- Connect the GR8 to the 12V battery and select ECM Power Supply Mode. If the vehicle battery voltage drops below 12.0V or above 15.5V during reprogramming, the ECM may be damaged.
- Be sure to turn OFF all vehicle electrical loads. If a vehicle electrical load remains ON, the ECM may be damaged.
- Be sure to connect the AC Adapter. If the CONSULT PC battery voltage drops during reprogramming, the process will be interrupted and the ECM may be damaged.
- Turn OFF all external Bluetooth® devices (e.g., cell phones, printers, etc.) within range of the CONSULT PC and the VI. If Bluetooth® signal waves are within range of the CONSULT PC during reprogramming, reprogramming may be interrupted and the ECM may be damaged.

13. After completing Erase ALL DTCs, print a copy of the C-III plus screen showing the before and after part numbers of the control unit and attach it to the repair order.

ECM Recovery

Do not disconnect the plus VI or shut down C-III plus if reprogramming does not complete.

If reprogramming does not complete and the “!” icon displays as shown in Figure 5:

- Check battery voltage (12.0 - 15.5 V).
- Ignition is ON, engine OFF.
- External Bluetooth® devices are OFF.
- All electrical loads are OFF.
- **Select retry and follow the on screen instructions.**
- **“Retry” may not go through on first attempt and can be selected more than once.**

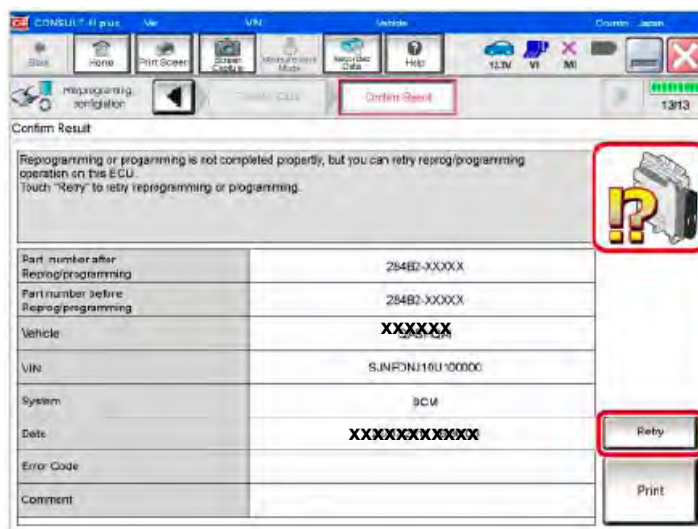


Figure 5

If reprogramming does not complete and the “X” icon displays as shown in Figure 6:

- Check battery voltage (12.0 - 15.5 V).
- CONSULT A/C adapter is plugged in.
- Ignition is ON, engine OFF.
- Transmission is in Park.
- All C-III plus / VI cables are securely connected.
- All C-III plus updates are installed.
- **Select Home, and restart the reprogram procedure from the beginning.**

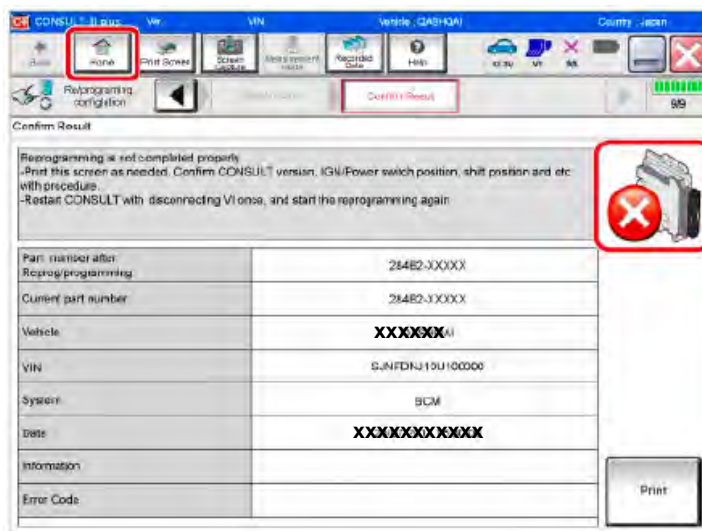


Figure 6

Write Saved Data

14. Return to the C-III- plus Home screen (see Figure 1A).

15. Confirm the ignition is ON, with engine OFF.

16. Confirm the plus VI is recognized.

- The **Serial No.** will display when the plus VI is recognized.

17. Select **Diagnosis (One System)**.

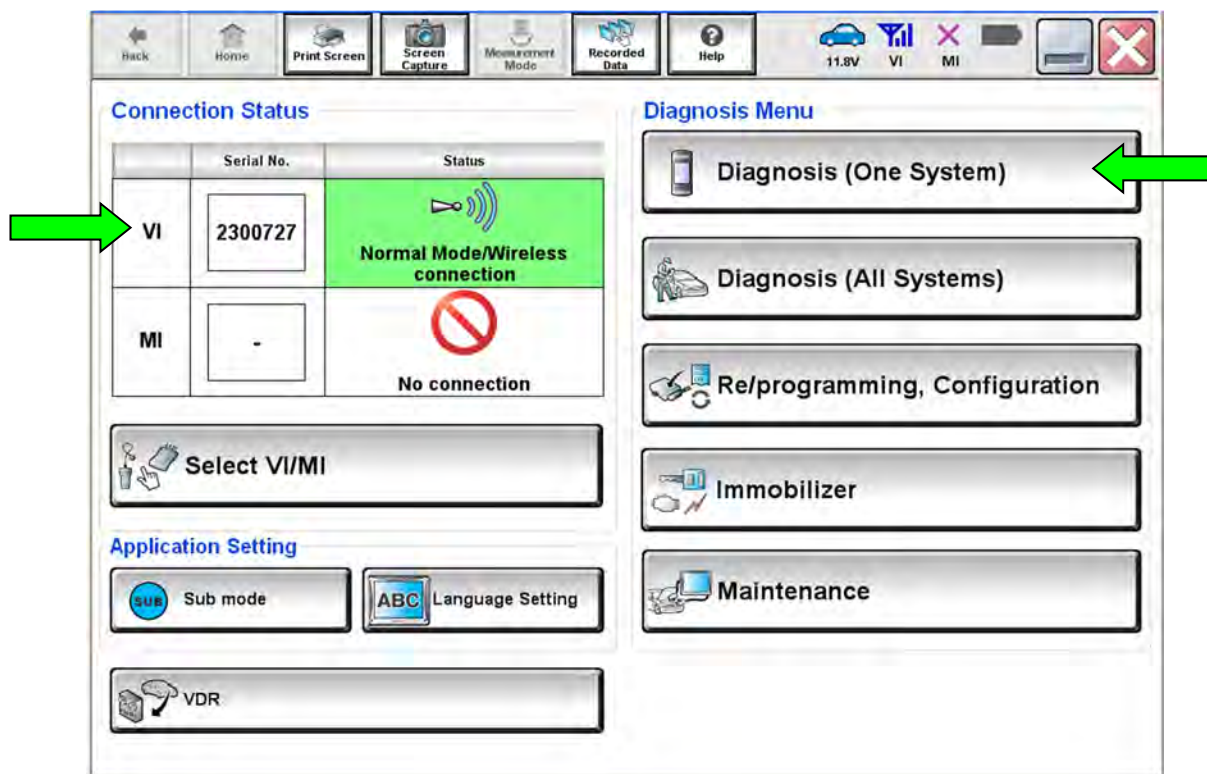


Figure 7

18. Navigate C-III plus to Engine > Work Support (see Figure 8).

19. Select **WRITE SAVED DATA**.

20. Select **Start**.

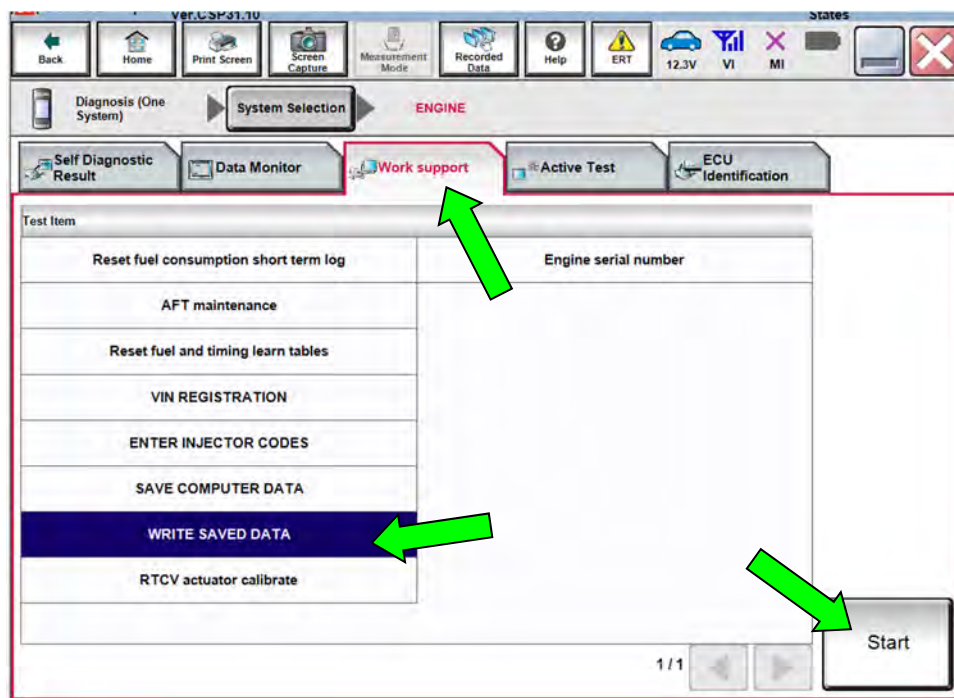


Figure 8

21. Make sure the ignition is ON and the engine is OFF (engine not running).

22. Select **Confirm**.

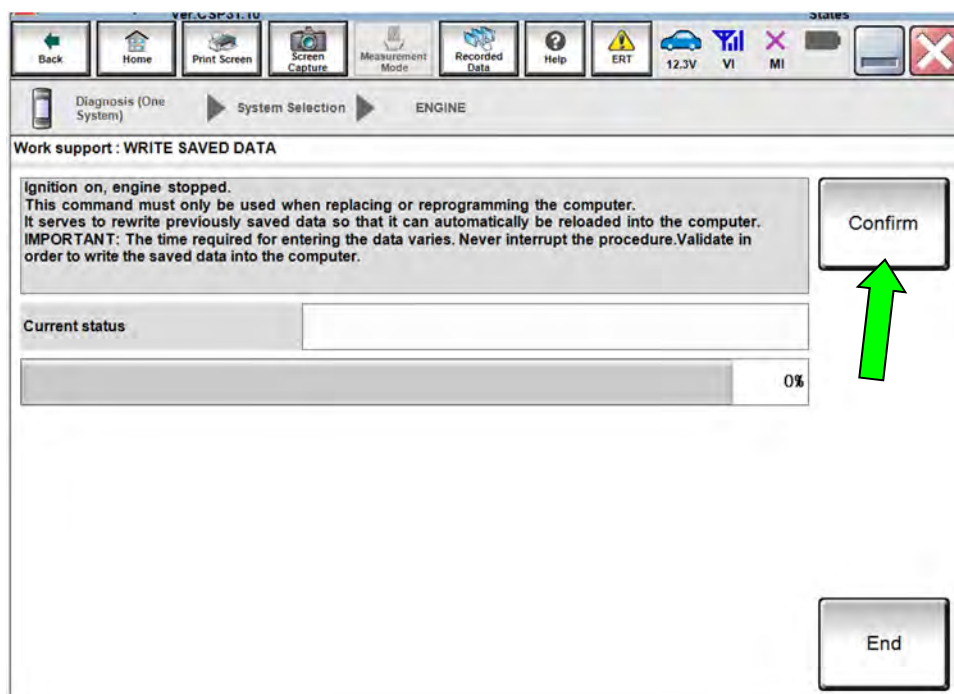


Figure 9

23. Wait for the procedure to complete.

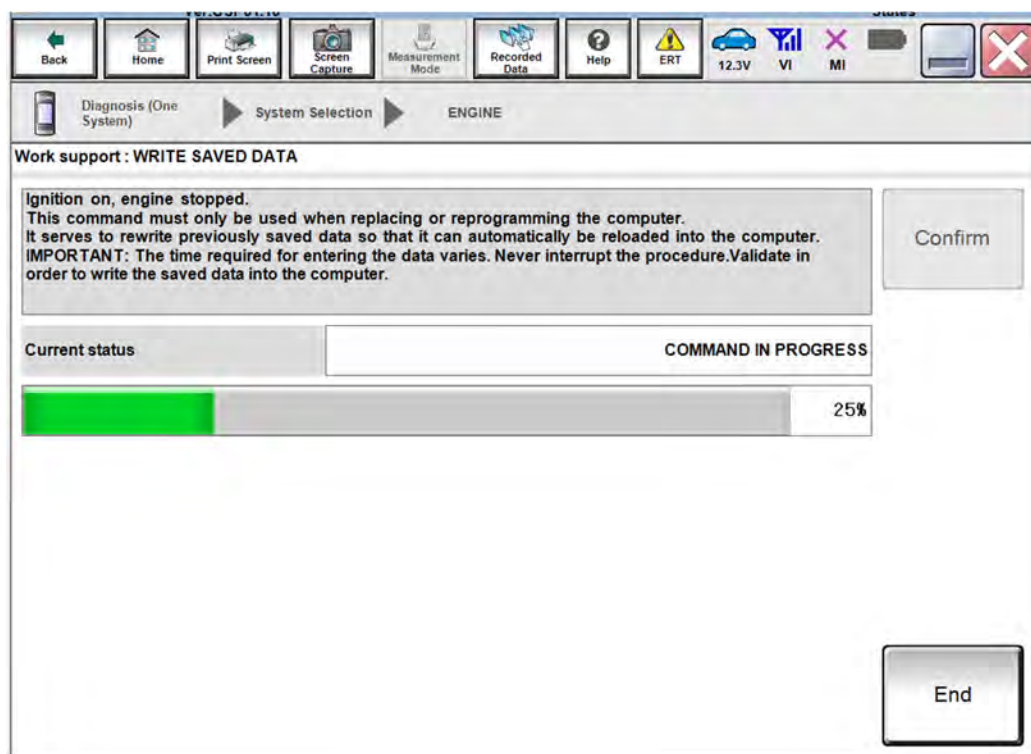


Figure 10

24. Select **End**.

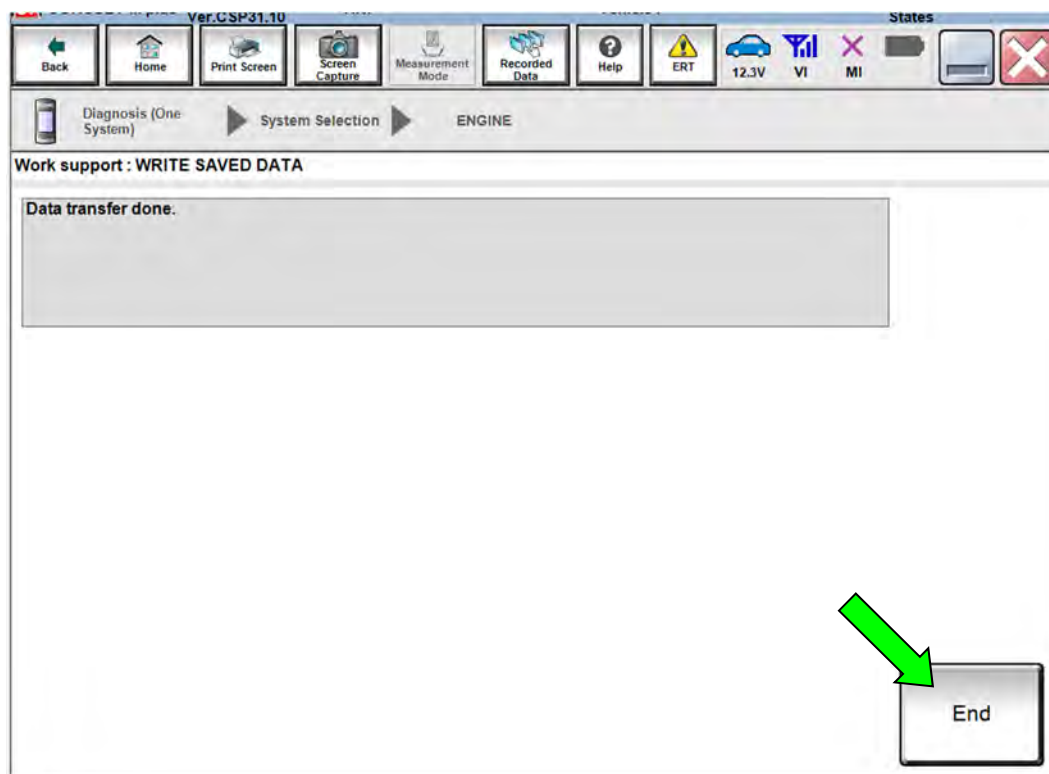


Figure 11

CLAIMS INFORMATION

Submit a Primary Part (PP) type line claim using the following claims coding:

DESCRIPTION	PFP	OP CODE	SYM	DIA	FRT
Reprogram Engine Control Module	(1)	DE97AA	ZE	32	(2) (3)

- (1) Refer to the electronic parts catalog and use the Blank ECM assembly part number as the Primary Failed Part (PFP).
- (2) Reference the current Nissan Warranty Flat Rate Manual and use the indicated FRT.
- (3) FRT allows adequate time to access DTC codes and reprogram ECM. No other diagnostic procedures subsequently required. Do NOT claim any Diagnostic Op Codes with this claim.

AMENDMENT HISTORY

PUBLISHED DATE	REFERENCE	DESCRIPTION
February 28, 2019	NTB19-011	Original bulletin published

