

**SERVICE
CENTER
INFORMATION****SCI19-01A**

DATE :	January 2019	SECTION : 00 GENERAL
SUBJECT :	MCM MODULE P/N 23499009 BENCH PROGRAMMING PROCEDURE FOR THE ELECTRIC FAN DRIVE CONVERSION KIT	

Revision: A

02-27-19

DESCRIPTION

The intent of this procedure is to guide you through the steps required to program a MCM especially for the control of the electric fan drive as required for conversion kit of instruction sheets IS-19900 & IS-19910.

BEFORE PROGRAMMING	AFTER PROGRAMMING
MCM (non-programmed) part #23499009	MCM programmed part #23499009-EFD

MATERIAL NEEDED

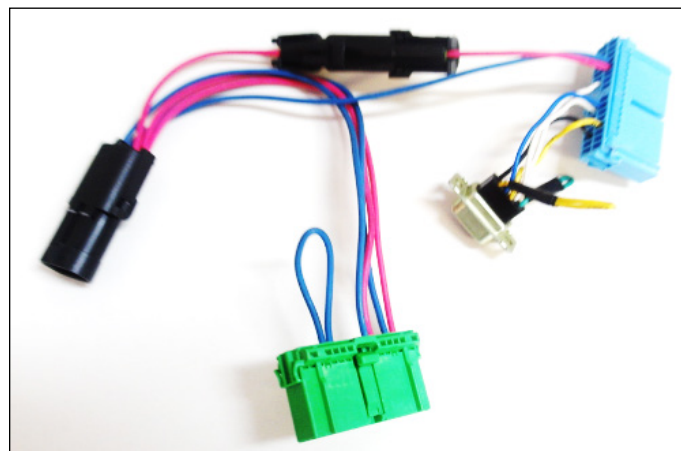
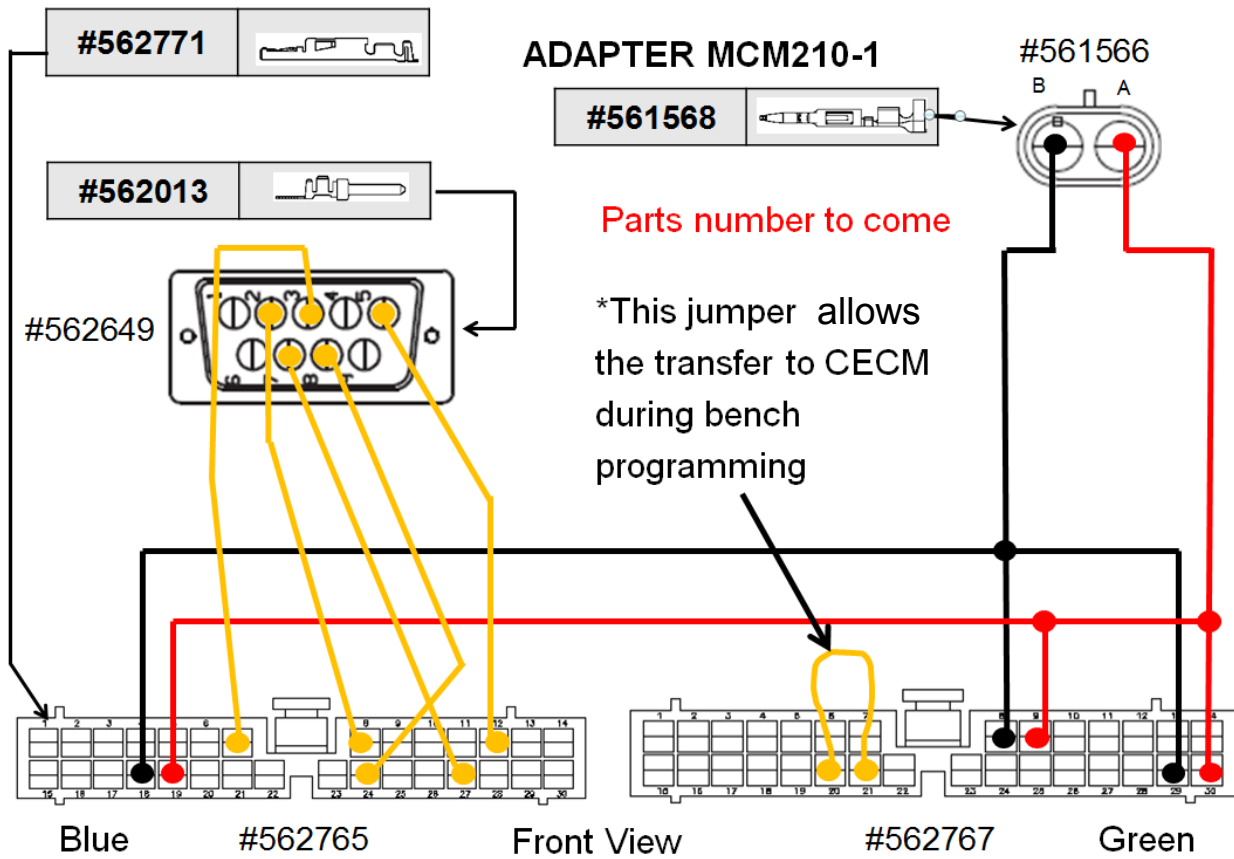
Part No.	Description	Qty
23499009	MCM (non-programmed)	1
7770985	DECAL	1

SPECIAL TOOLS AND OTHER EQUIPMENT NEEDED

1. A laptop with the following software installed: MAIDCOM.
2. A network access
3. Interface harness (make this harness as per the diagram found in the instruction)
4. Special Prevost cable #066009
5. 24V-3A Power supply
6. Electric fan control program: body software *FB06100118F01*

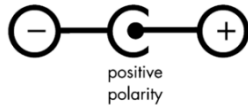
BUILD THE INTERFACE HARNESS

1. Build the interface harness as per the following diagram.



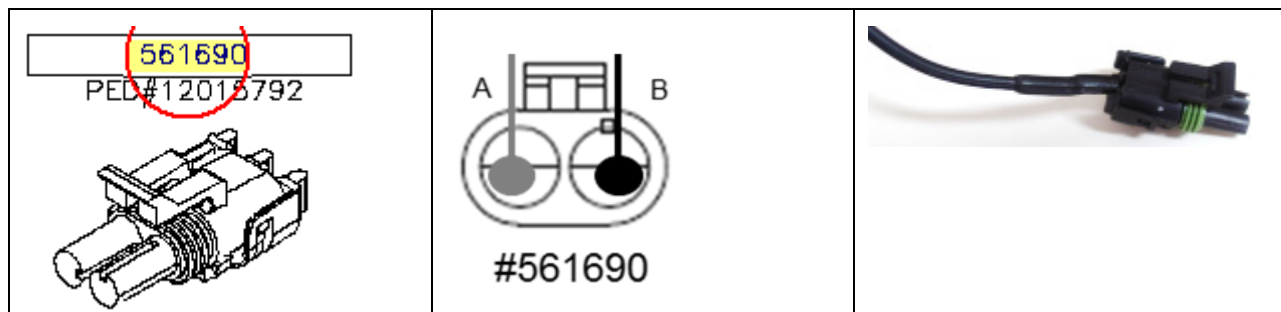
24V-3A POWER SUPPLY HARNESS ADAPTATION

2. The power supply connector is of positive polarity. Center is positive.



3. Cut the power supply output harness standard connector. Fit a connector #561690 with 2x socket terminal #561578.

- Negative wire to terminal pin A
- Positive wire to terminal pin B.



INSTALLING MAIDCOM

4. Install Maidcom on your computer. Get Maidcom on Volvo network using the link below:

https://secure.volvo.com/VBCRemote/files_Applications/MAIDCOM%20Plugin%20for%20TechTool%20version%202.04%20and%20up/Setup.Maidcom2_7_5591_Standalone.zip

5. You will end up here. Type your username and current password.

VOLVO Operated by: VOLVO IT

Welcome to Volvo Network

https://secure.volvo.com/VBCRemote/files_Applications/MAIDCOM%20Plugin%20for%20TechTool%20version%202.04%20and%20up/Setup.Maidcom2_7_5591_Standalone.zip

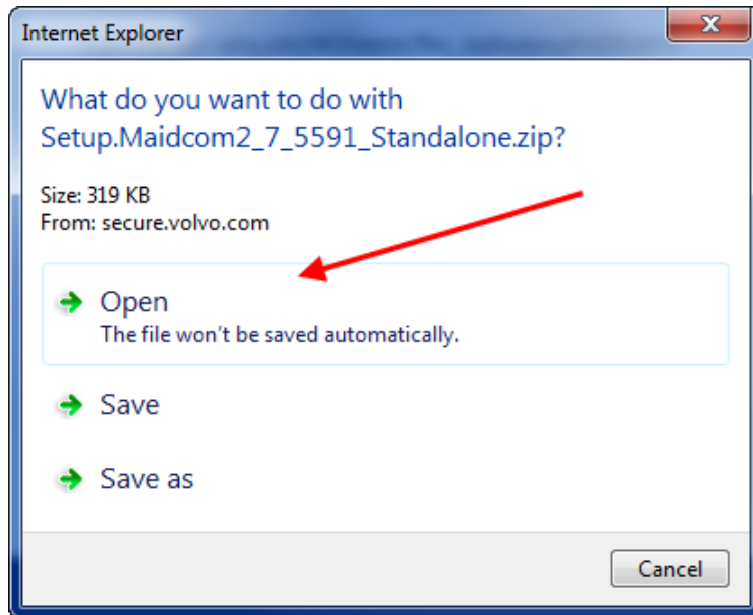
Username ub60392 **Password** *****

Authentication type:

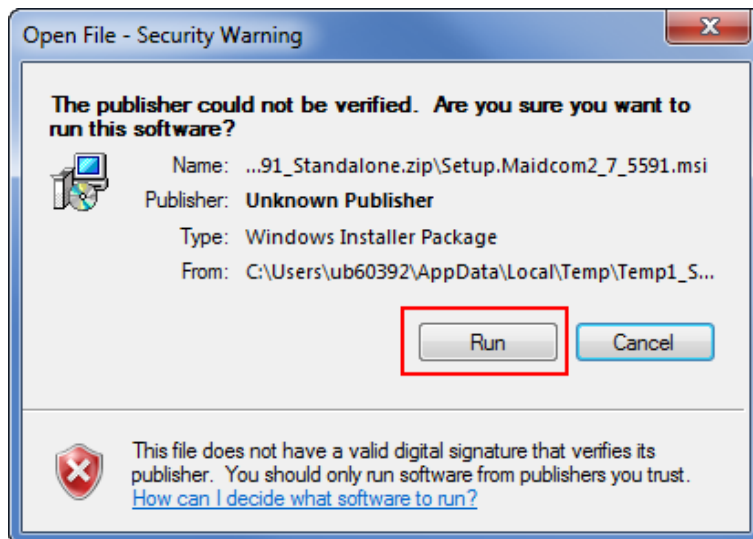
Static Password Login
 DigiPass Login

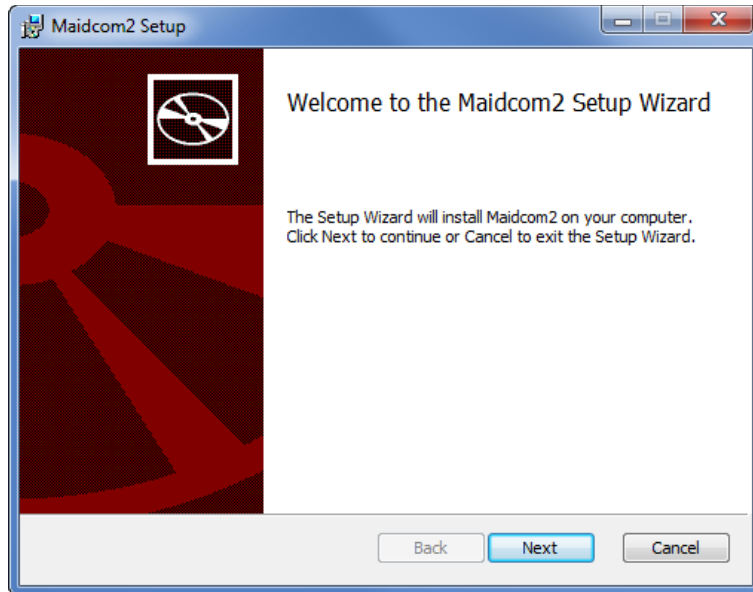
[Change password](#)

6. This dialog box will show. Select "Open".

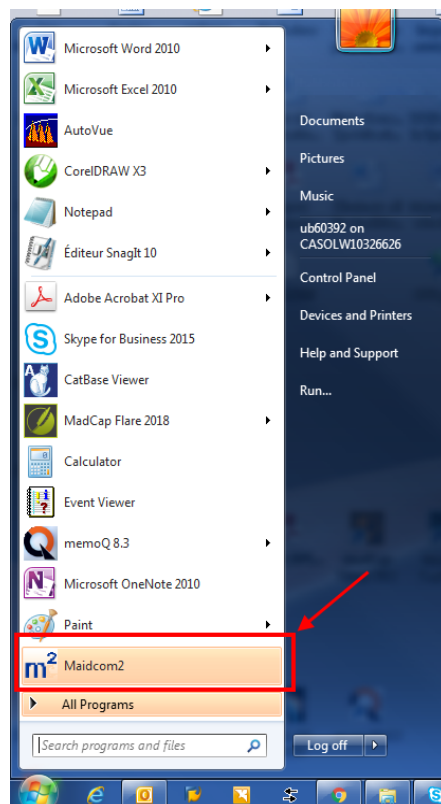


7. A window similar to the one below will show. Double-click on the file to run the Setup Wizard and perform the installation steps.



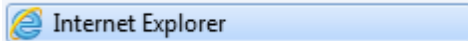


8. Maidcom now installed on your computer.



9. Make a new icon in your taskbar so you can start Maidcom from the taskbar. To do so, in the *Start Menu*, right-click on M2 Maidcom2 and then select *Pin to Taskbar*.

NEW INTERNET EXPLORER LINK ON YOUR COMPUTER



Important note for computers equipped with Windows 10. Make sure that Internet Explorer is installed on your computer and that you use it to create the link and to connect with the MCM module.



Edge fails to connect with the MCM module. Don't use Edge for this procedure.

10. You need to create one shortcut (Internet Explorer link) on your desktop as seen on the image below.



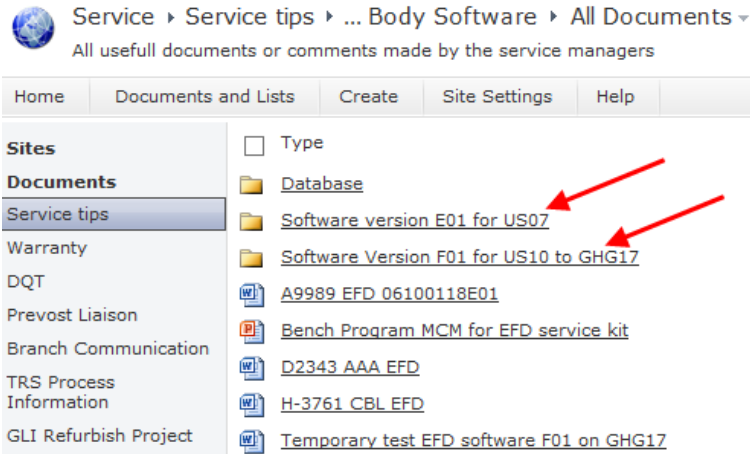
11. Create the link with the following addresses:

Name: *Volvo Bus Local Host* <http://localhost:49555/>

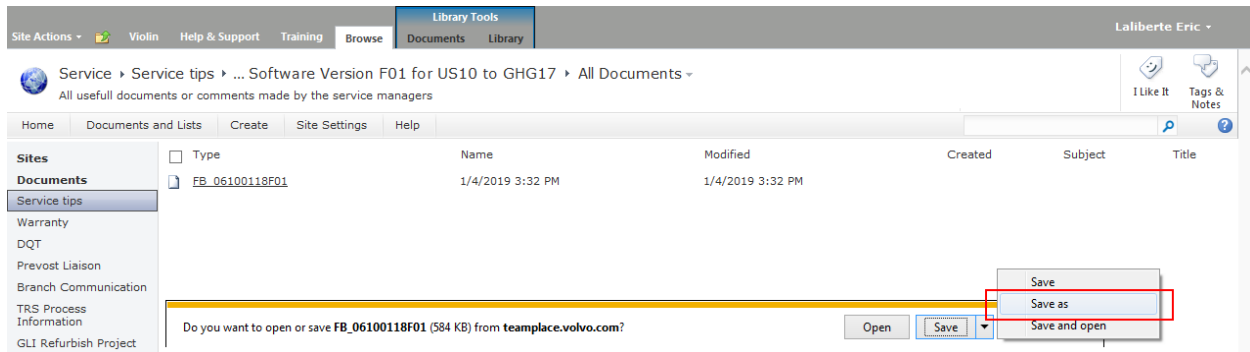
GET BODY SOFTWARE AND SAVE ON YOUR COMPUTER

12. Get the MCM program for **US10 to GHG17** (*body software FB06100118F01*) on the Service Tips portal using the link below and save it on your computer.

[http://teampace.volvo.com/sites/vbc-scr-dtr-service/Service tips/Electric Fan drive service kit/Body Software](http://teampace.volvo.com/sites/vbc-scr-dtr-service/Service%20tips/Electric%20Fan%20drive%20service%20kit/Body%20Software)



13. Click on FB06100118F01 and then save it on your computer at an appropriate location. You can save file to your Desktop, which can give you quick access to it.



CONNECTIONS

14. Connect your interface harness to the non-programmed MCM.
15. Connect harness #066009 to the COM serial port of your computer.



#066009



Use COM Serial port
adapter

16. Connect the other end of harness #066009 to the DB9 connector on the interface harness.

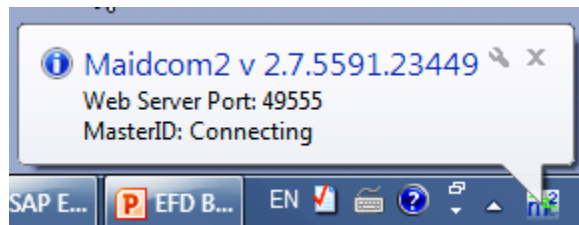
17. Connect the 24V power supply to the appropriate connector on the interface harness.

START MAIDCOM

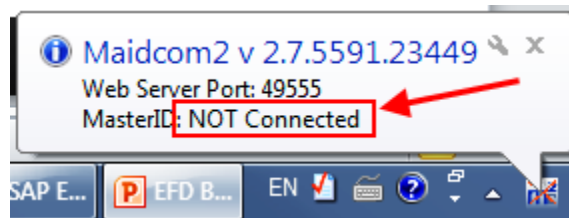
18. Click the Maidcom icon to start it.



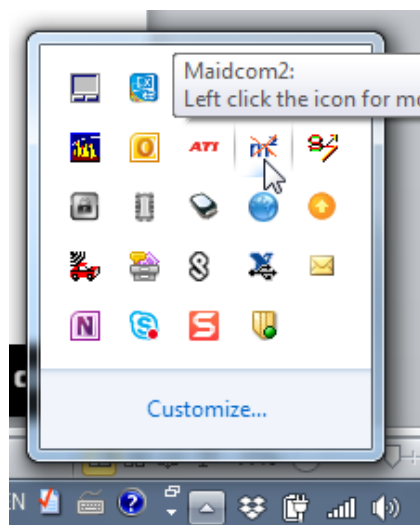
Maidcom will try to connect with the MCM module.

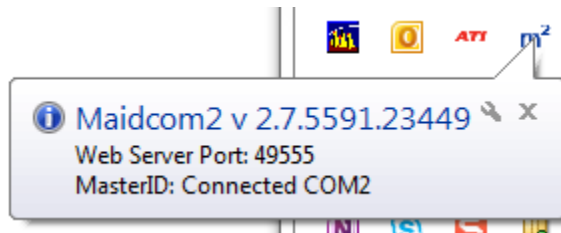
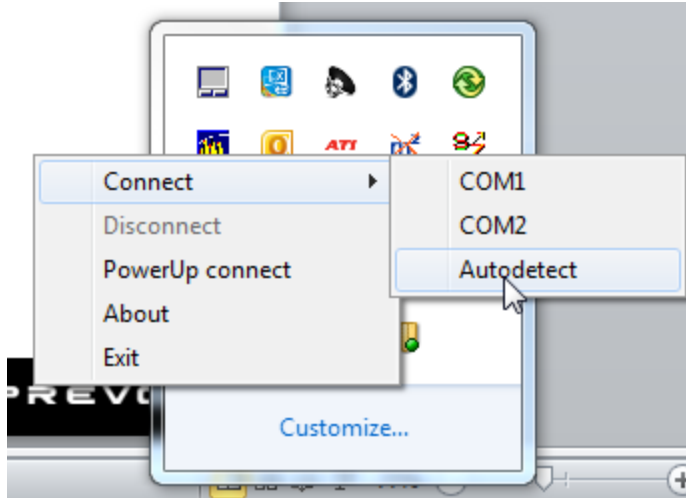


There is a good chance that the first connection trial fails.



If this is the case, in the taskbar, right-click the Maidcom icon and then select *Auto-Detect*.





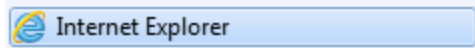
CONNECTING WITH THE MCM WEB PAGE

19. Connect with the MCM web page using the *Volvo Bus Local Host* link previously made.



20.

Make sure to use Internet Explorer



Use the following user name & password:

User name: USER1

Password: fqYos



[Download Software Package](#)

[Start System Software](#)



20. Once connected, select *Download Software Package*.

VOLVO Volvo Bus On-board WEB-Server BOOTLOADER

[Download Software Package](#)

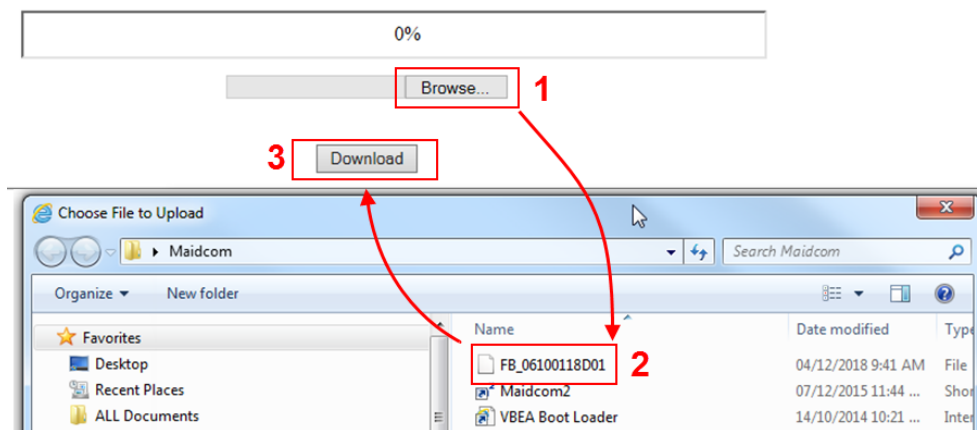
MasterID, MID 210:

Hardware PN	23317344-P01
Hardware SN	07745729
Bootloader PN	23317370-P01
Manufacturer data	

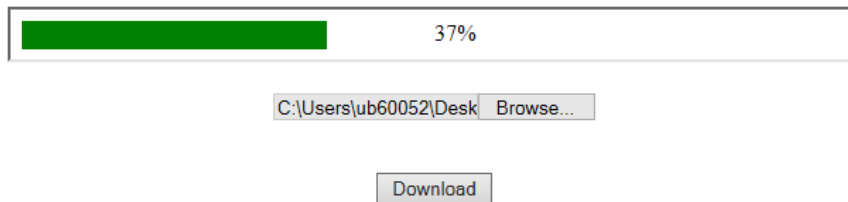
Software:

Vehicle ID	
System software	NOT FOUND

21. Click on *Browse* and search for the Body Software saved on your computer (see 1 on image below).
22. Select the Body Software *FB0610011801* (see 2 on image below).
23. Click on *Download* (see 3 on image below).



Select the software package you want to download.



24. Click on *Start System Software* and then....**wait** .

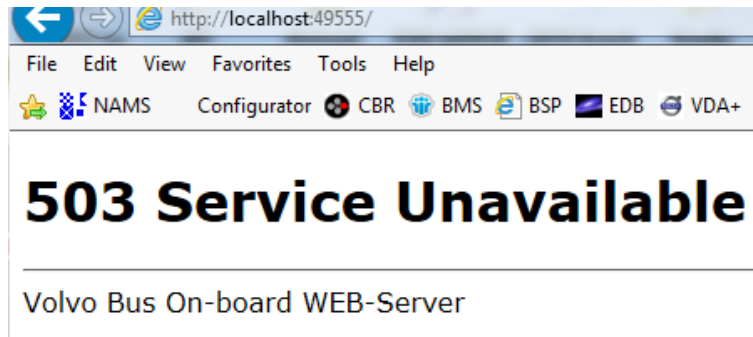
Code 100: Download OK

[Download Software Package](#)

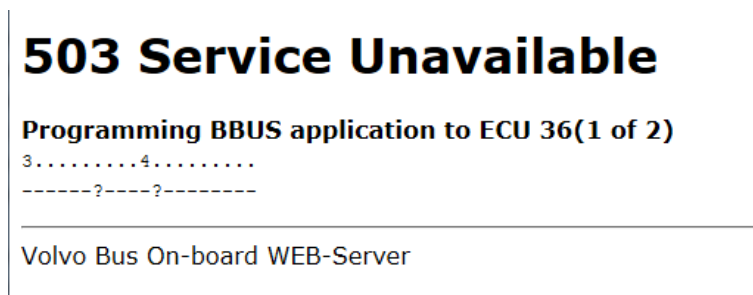
[Start System Software](#)

MasterID, MID 210:	
Hardware PN	23317344-P01
Hardware SN	07745729
Bootloader PN	23317370-P01
Manufacturer data	
Software:	
Vehicle ID	00000000A00
System software	SS-23369980-P01
Common Pages	CP-70369667
CECM-B, MID 188 SSW	BS-23370350-P01-06100118D01
B-Bus Application	BA_00000000A00
B-Bus Parameters	PB_00000000A00

25. The following window is normal,*wait*



26. The following window is normal*wait* until the window closes.



CONFIRM THAT THE MCM WAS PROGRAMMED SUCCESSFULLY

27. Confirm that the MCM was programed successfully. Select *Vehicle Information*.

VOLVO

Chassis : 06100118F01 PREVOS
2018-12-21/07:36:04

- + Language (English)
- Vehicle information**
- + Fault log
- + MID view
- + Operation view
- + Function diagram view
- + Parameters
- + Programming
- + Help
- + Exit

MasterID, MID 210:

Hardware PN	23317344-P01
Hardware SN	07823582
Bootloader PN	23317370-P01
Manufacturer data	

Software:

Vehicle ID	00000000A00
System software	SS-23369980-P01
Common Pages	CP-70369667
CECM-B, MID 188 SSW	BS-23370350-P01-06100118F01
B-Bus Application	BA_00000000A00
B-Bus Parameters	PB_00000000A00

28. Select *Body ECU Info*.

VOLVO

Body ECU info

Chassis : 06100118F01 PREVOS
2018-12-21/07:36:04

- + Language (English)
- Vehicle information
- Master ID information
- Body ECU info**
- Body component list
- + Fault log
- + MID view
- + Operation view
- + Function diagram view
- + Parameters
- + Programming
- + Help
- + Exit

Success

GOOD. FIELDS ARE POPULATED

http://localhost:49555/ - VOLVO MULTIPLEX - Internet Explorer

VOLVO Volvo Bus On-board WEB-Server

Body ECU info

Chassis : 06100118F01 PREVOS
2018-12-21/07:36:04

- + Language (English)
- Vehicle information
- Master ID information
- Body ECU info
- Body component list
- + Fault log
- + MID view
- + Operation view

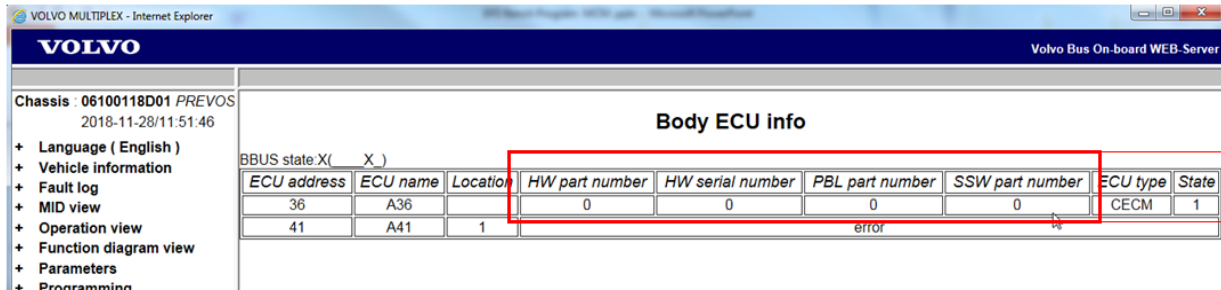
Body ECU info

BBUS state: N(N)

ECU address	ECU name	Location	HW part number	HW serial number	PBL part number	SSW part number	ECU type	State
36	A36		23317363	7823582	23498985	23370350	CECM	1
41	A41	1	error					

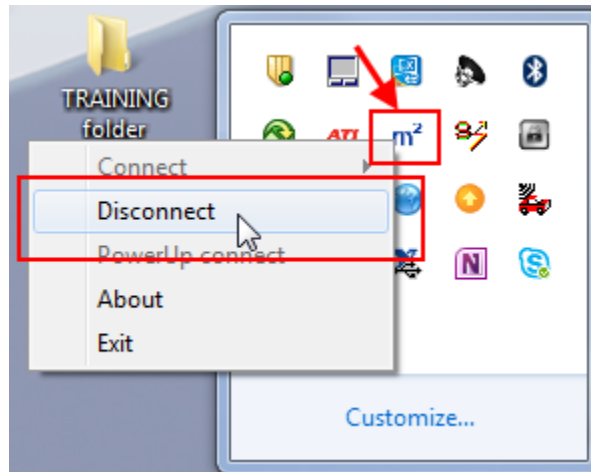
Fail

ERROR. ALL FIELD VALUES ARE "0"



In case of failure, you can try to program the MCM once again but first, shut down your computer and restart. Doing so gives good results.

29. Exit Maidcom. To do so, right-click on the icon and then select *Disconnect*.



DECAL

30. Identify the now programed MCM. Programed MCM for the Electric Fan Drive conversion kit is part number **23499009-EFD**. Affix decal #7770985 on the programed MCM. To avoid any confusion, hide the MCM previous part number 23499009 with the decal.

