

# SERVICE BULLETIN

UTILITY TRAILER MANUFACTURING CO.



## ***SB-07-012***

*February 20, 2019*

### **Modification for New 7" Horizontal Dock Bumper Base Specification on VS2RA and VS2DX Models**

Effective 02/01/2019, the 7" deep horizontal dock bumper has become the base specification on all Utility VS2RA and VS2DX models. All VS2RA and VS2DX trailers produced on or after 02/01/2019 will feature this new base specification.

As a result of this update, the 4" bumper option is no longer available. All Aftermarket orders for horizontal bumper components must conform to the new standard of a 7" horizontal tube.

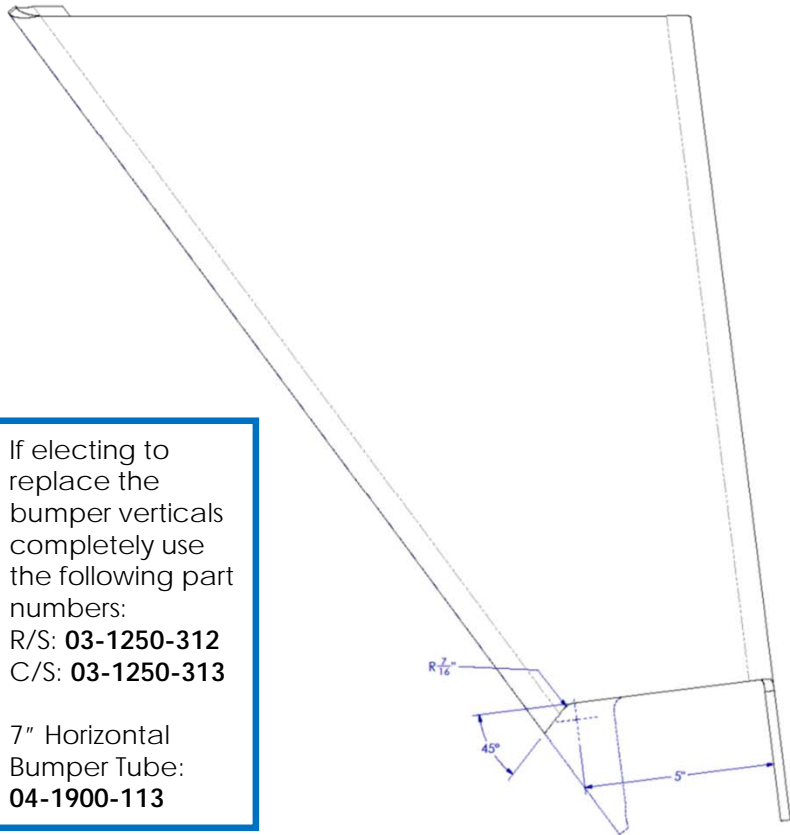
Utility dealerships repairing previously manufactured trailers with a damaged 4" horizontal bumper set-up will have to modify the bumper verticals to fit the 7" horizontal tube

- Weld-on Assemblies: For cutting and weld details please refer to the drawings on the following pages:
  - Reefer (VS2RA) cut and weld details (Pg. 2)
  - Dry Van (VS2DX) cut and weld details (Pg. 3)
- Bolt-on Assemblies: For modification details please refer to the drawings on the following pages:
  - Reefer (VS2RA) vertical modification details (Pg. 4)
  - Dry Van (VS2DX) vertical modification details (Pg. 5)
  - New bolt-on horizontal tube style and installation (Pg. 6-7)

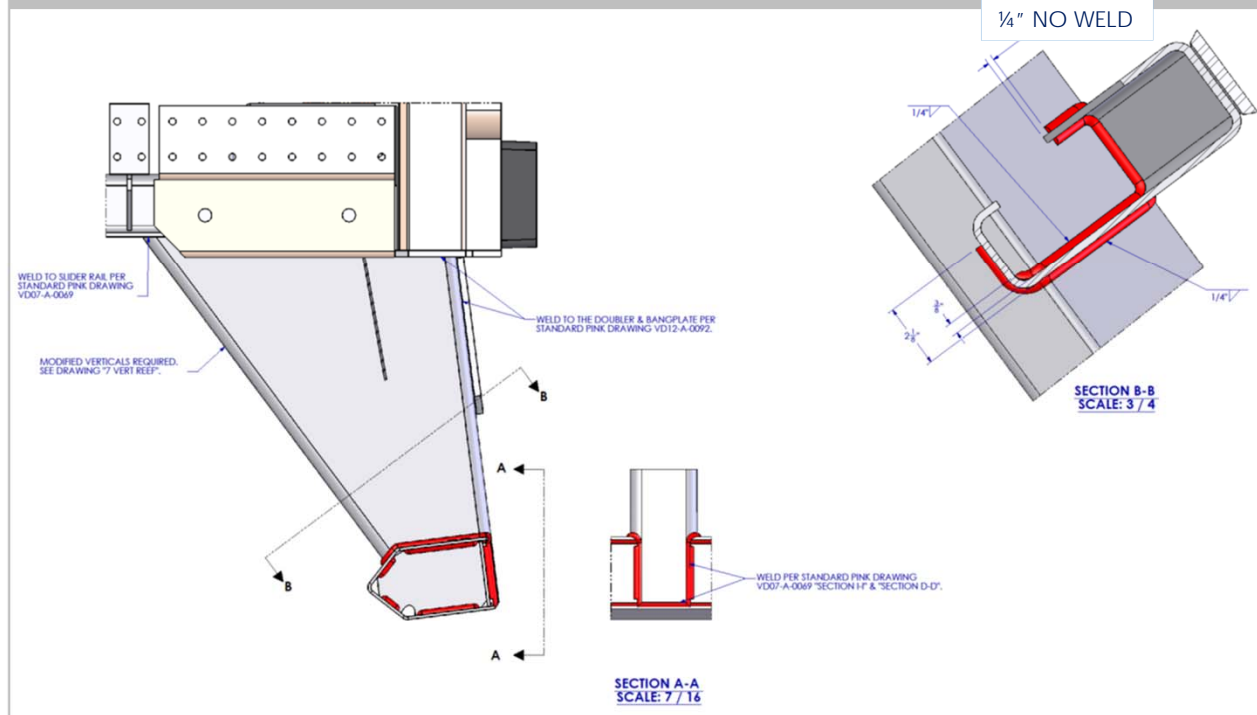
Any further questions may be directed to the Field Service Department at 1(800) 423-6591.

Field Service Department  
UTILITY TRAILER MANUFACTURING COMPANY

# VS2RA WELD-ON



If electing to replace the bumper verticals completely use the following part numbers:  
R/S: **03-1250-312**  
C/S: **03-1250-313**  
  
7" Horizontal Bumper Tube:  
**04-1900-113**



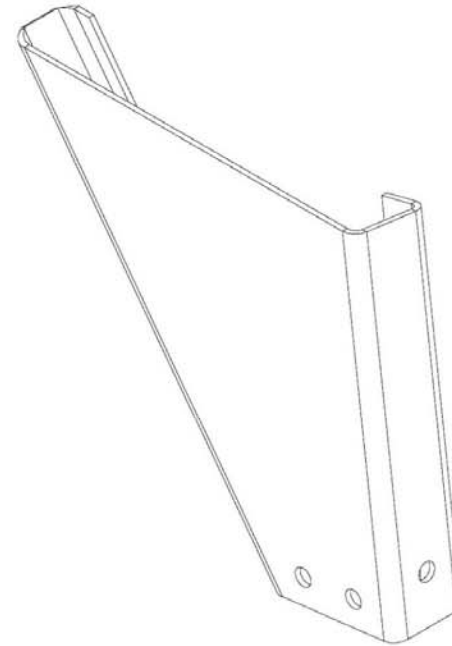
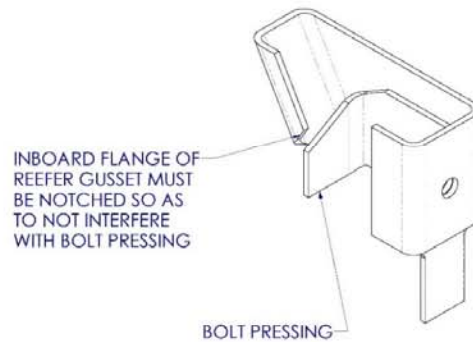
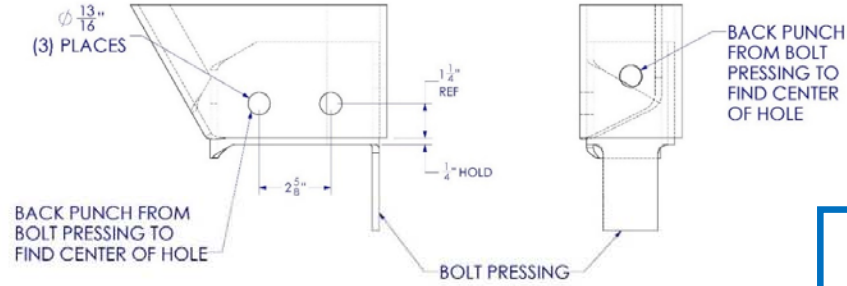
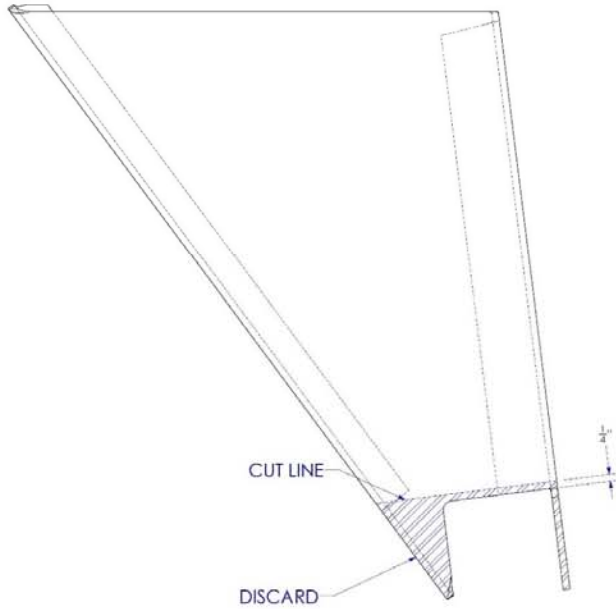
Cutting details VS2RA



Weld details VS2RA



# VS2RA BOLT-ON



Modification details for VS2RA bumper verticals

If electing to replace the bumper verticals completely, a quote can be requested through Parts123.

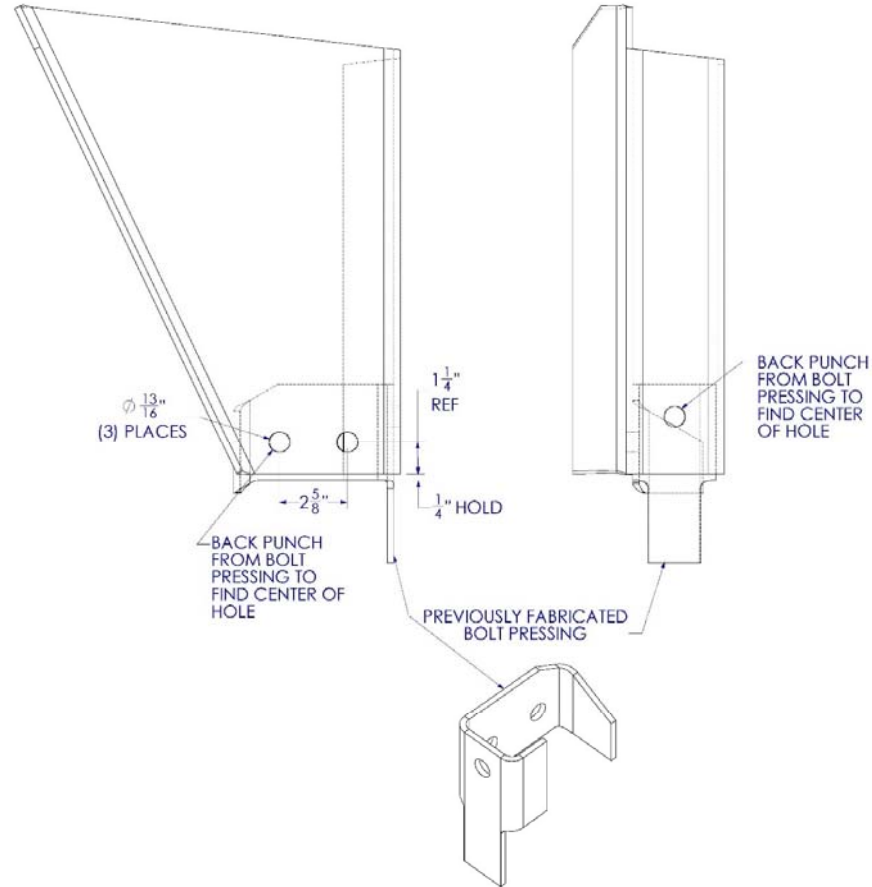
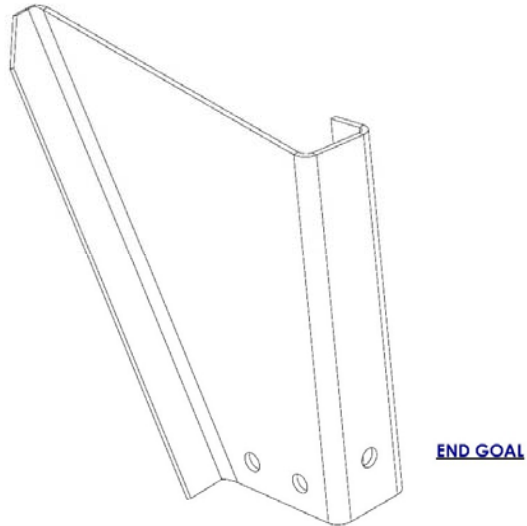
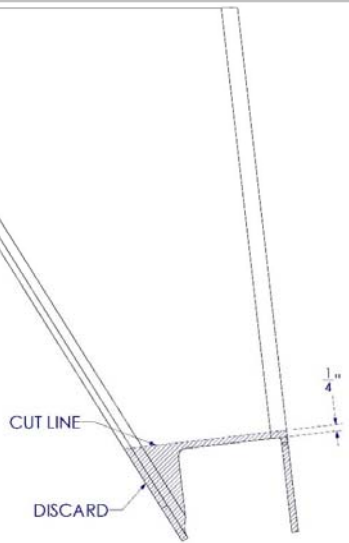
**\*Pending Part Number Release\***

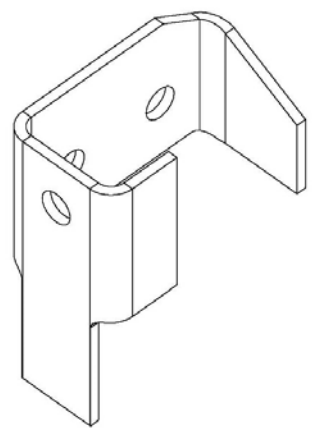
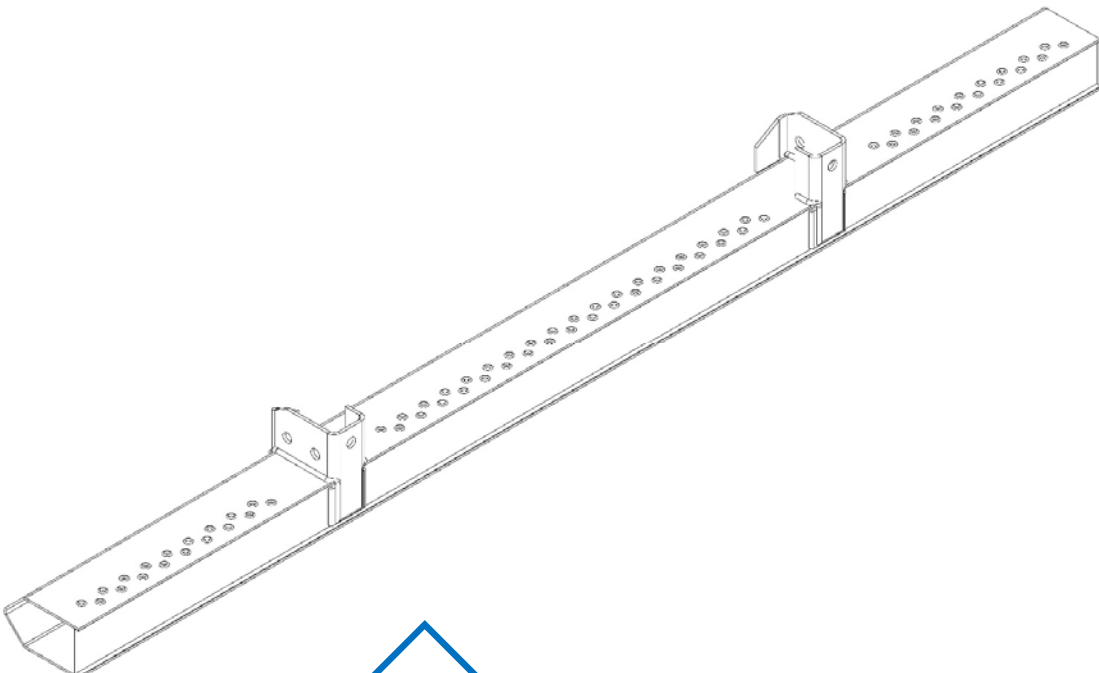
# VS2DX BOLT-ON

Modification details  
for VS2DX bumper  
verticals

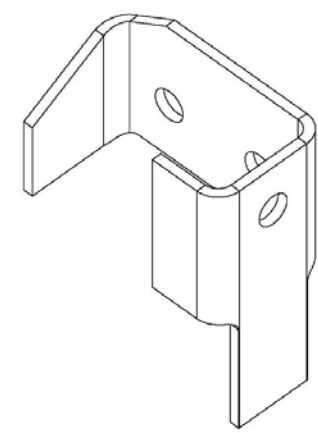
If electing to  
replace the  
bumper verticals  
completely, a  
quote can be  
requested through  
Parts123.

**\*Pending Part  
Number Release\***





R/S

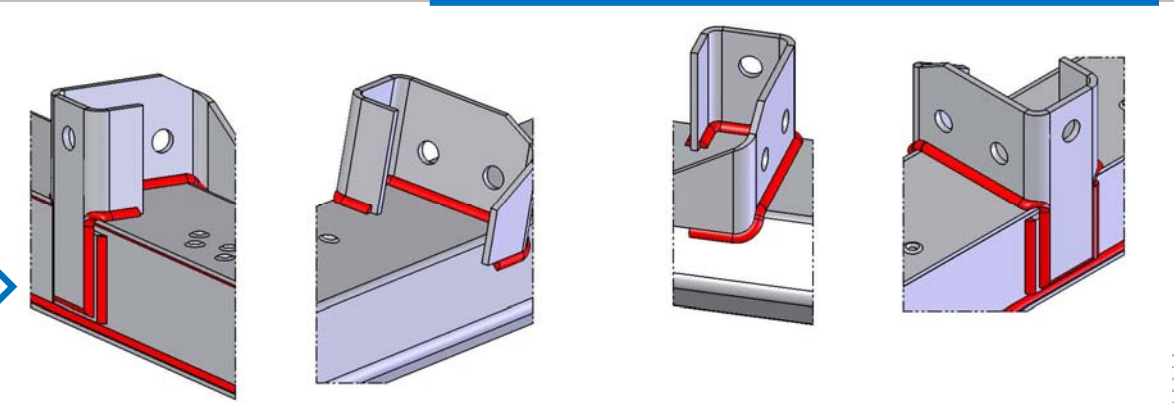


C/S

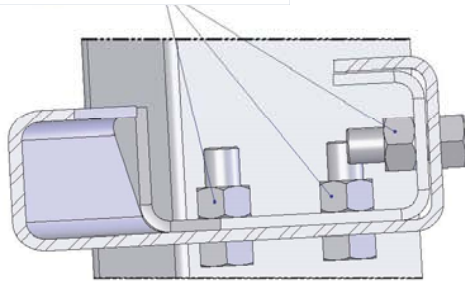
New style for bolt-on horizontal tube  
Part # **04-1900-113**

Will ship separately from horizontal tube  
Request a quote on Parts123  
**\*Pending Part Number Release\***

Weld details for mounting bracket to horizontal tube

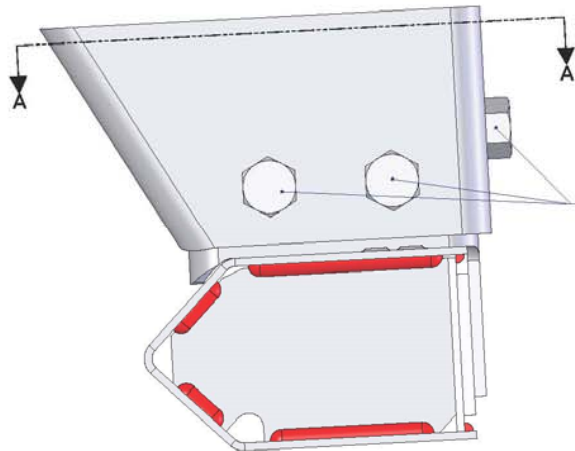
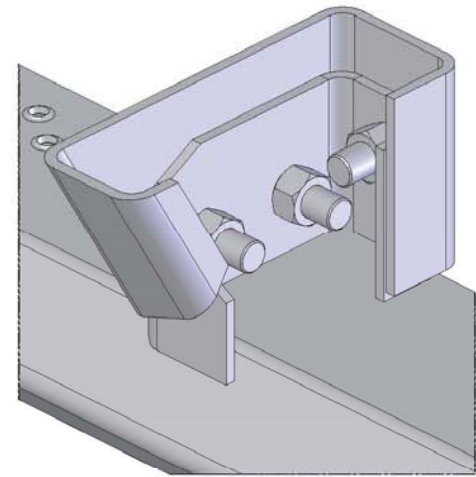


Stover Lock Nut  
(Part# 02-5721-048)  
3/4" - 16NF GRADE C CAD PLATED  
Qty (6) Per Bumper



SECTION A-A  
SCALE: 3 / 4

Installation details for bolt-  
on horizontal tube



Hex Head Bolt  
(Part# 02-0938-014)  
3/4" - 16NF X 2" GRADE 8 CAD PLATED  
Qty (6) Per Bumper

