

Field campaign

Topic	12MY,13MY and 14MY Power Boot Campaign RoW (SC16/24)
Market area	Hongkong-Macau (5HK),Russische Föderation (5RU),Australia E04 Bentley rest Asia and Australia (6E04),China 796 VW Import Comp. Ltd (Vico), Beijing (6796),Germany E02 Bentley rest Europe (6E02),Japan E03 Bentley Japan (6E03),Russian Federation 935 Volkswagen Group RUS (6935),United Arab Emirates E06 Bentley Middle East and Africa (6E06),United States E05 Bentley USA and rest America (6E05)
Brand	Bentley
Transaction No.	2045092/3
Campaign number	EA62
Note	
Type	Service Campaign
US code	

Vehicle data

New Continental

Sales types

Type	MY	Brand	Designation	Engine code	Gearbox code	Final drive code
39*	2012	E		*	*	*
39*	2013	E		*	*	*
39*	2014	E		*	*	*

Chassis numbers

Manufacturer	Filler	Type	Filler	MY	Factory	From	To	Prod from	Prodto
SCB	GR3	ZA	5	C	C	000003	000003		
SCB	GR3	ZA	7	C	C	000004	000004		
SCB	FA6	3W	X	E	C	000008	000008		
SCB	GC3	ZA	7	E	C	000380	000380		
SCB	FR7	ZA	4	C	C	072314	072314		
SCB	FE6	3W	5	C	C	072316	072316		
SCB	FR7	ZA	1	C	C	072318	072318		
SCB	FE6	3W	2	C	C	075142	075142		
SCB	FR7	ZA	5	C	C	075139	075139		
SCB	GR3	ZA	7	C	C	075141	075141		
SCB	FH6	3W	7	C	C	075144	075144		
SCB	GR3	ZA	6	C	C	075146	075146		
SCB	FR7	ZA	4	C	C	075147	075147		
SCB	FE6	3W	5	C	C	075149	075149		
SCB	GR3	ZA	8	C	C	075150	075150		
SCB	GR3	ZA	1	C	C	075152	075152		
SCB	FR7	ZA	X	C	C	075153	075153		
SCB	FH6	3W	X	C	C	075154	075154		
SCB	FH6	3W	1	C	C	075155	075155		
SCB	GR3	ZA	9	C	C	075156	075156		
SCB	FR7	ZA	7	C	C	075157	075157		
SCB	FE6	3W	6	C	C	075158	075158		
SCB	FE6	3W	8	C	C	075159	075159		
SCB	FE6	3W	4	C	C	075160	075160		
SCB	GR3	ZA	4	C	C	075162	075162		
SCB	GR3	ZA	8	C	C	075164	075164		
SCB	GR3	ZA	3	C	C	075167	075167		
SCB	GR3	ZA	3	C	C	075170	075170		
SCB	FH6	3W	1	C	C	075172	075172		
SCB	FH6	3W	3	C	C	075173	075173		
SCB	FH6	3W	5	C	C	075174	075174		
SCB	GR3	ZA	2	C	C	075175	075175		

Notes

Repair instructions

Technical background

Bentley has developed a boot system update pack to resolve customer issues.

Remedy

This campaign provides a series of checks and updates to the boot system to ensure robust operation. It is important the campaign is followed exactly to ensure maximum benefit.

Customer notification

Inform your customers with affected vehicles in writing about the service campaign.

Make sure all affected vehicles are checked and repaired as part of the workshop visit. Write the service measure to be performed on the workshop order before the customer signs it. If the campaign was not performed during a workshop visit, inform the customer straight away about the campaign.

Please promptly inform your new and used vehicle department, so that affected vehicles can be checked straight away and if necessary repaired.

Warranty accounting instructions

LOT 1 Software update for New Continental GT:

- Boot lid function and force gauge Test 1
- New Continental GT replace gas struts
- Software update
- Check list A
- Boot lid function and force gauge Test 2

Warranty Type 790 or 710
 Labour Operation Code 55 90 49 01
 Damage Service Number EA44
 Damage Code 00 66
 Time 80 TU
 Criteria ID 01

LOT 2 Software update for Continental GT, Continental GTC, Supersports including convertible and New Continental GTC:

- Boot lid function and force gauge Test 1
- Software update
- Check list A
- Boot lid function and force gauge Test 2

Warranty Type 790 or 710
 Labour Operation Code 55 90 49 02
 Damage Service Number EA44
 Damage Code 00 66
 Time 70 TU
 Criteria ID 01

LOT 3 Check list B (stage 1) New Continental GT:

- Check and adjust boot lid hinge
- Boot lid function and force gauge test

Warranty Type 790 or 710
 Labour Operation Code 55 90 49
 03 Damage Service Number EA44
 Damage Code 00 66
 Time 30 TU
 Criteria ID 01

LOT 4 Check list B (stage 1) New Continental GTC:

- Check and adjust boot lid hinge
- Remove and replace hinge bolts (increase length)
- Boot lid function and force gauge test

Warranty Type 790 or 710
Labour Operation Code 55 90 49 04
Damage Service Number EA44
Damage Code 00 66
Time 30 TU
Criteria ID 01

LOT 5 Check list B (stage 2) New Continental GT:

- Fit lighter springs striker door
- Latch cover check and replace
- Adjust striker alignment
- Check and if necessary adjust boot lid for aesthetic alignment
- Boot lid function and force gauge test

Warranty Type 790 or 710
Labour Operation Code 55 90 49 05
Damage Service Number EA44
Damage Code 00 66
Time 40 TU
Criteria ID 01

LOT 6 Check list B (stage 2) New Continental GTC:

- Fit lighter springs striker door
- Gas strut check
- Latch and cover check and replace
- Adjust striker alignment
- Check and if necessary adjust boot lid for aesthetic alignment
- Check and if necessary adjust boot overload switch
- Boot lid function and force gauge test

Warranty Type 790 or 710
Labour Operation Code 55 90 49 06
Damage Service Number EA44
Damage Code 00 66
Time 50 TU
Criteria ID 01

LOT 7 Check list B (stage 3) New Continental GT & GTC:

- Check boot lid latch micro switch function
- Boot lid function and force gauge test

Warranty Type 790 or 710
Labour Operation Code 55 90 49 07
Damage Service Number EA44
Damage Code 00 66
Time 20 TU
Criteria ID 01

LOT 8 Check list B (stage 3) New Continental GT & GTC:

- Replace boot lid latch assembly (latch micro switch function failed)
- Boot lid function and force gauge

Warranty Type 790 or 710
Labour Operation Code 55 90 49 08
Damage Service Number EA44
Damage Code 00 66
Time 50 TU
Criteria ID 01

LOT 9 Check list B (stage 3) New Continental GT & GTC:

- Check motor serviceability – torque over check motor fasteners
- Boot lid function and force gauge test

Warranty Type 790 or 710
Labour Operation Code 55 90 49 09
Damage Service Number EA44
Damage Code 00 66
Time 30 TU
Criteria ID 01

LOT 10 Check list B (stage 3) New Continental GT:

- Check motor alignment and peg location
- Boot lid function and force gauge test

Warranty Type 790 or 710
Labour Operation Code 55 90 49 10
Damage Service Number EA44
Damage Code 00 66
Time 40 TU
Criteria ID 01

LOT 11 Check list B (stage 3) New Continental GT:

- Remove and inspect motor splines
- Boot lid function and force gauge test

Warranty Type 790 or 710
Labour Operation Code 55 90 49 11
Damage Service Number EA44
Damage Code 00 66
Time 70 TU
Criteria ID 01

Genuine parts

The required replacement parts should be ordered from Bentley Motors Limited Crewe or through your regional Bentley parts distribution centre

Parts supply

Part number	Description	Quantity
3W0827441	Striker door spring	1
3W0827665	Striker door spring	1
3W0837106	Striker door retaining cap	2
3W8827550J	Gas strut – NewGT – shorter unit	2
3W0827520A	Latch trim cover	1
N91009701	Hinge bolts NewGT Convertible only	4

Consumables

Part number	Description	Quantity
1J5827147	Butyl sealing washer	4

Parts despatch control

3W8827550J	Gas strut – NewGT – shorter unit	2
3W0827520A	Latch trim cover	1
N91009701	Hinge bolts NewGT Convertible only	4

Consumables

Part number	Description	Quantity
1J5827147	Butyl sealing washer	4

Parts despatch control

Repair instructions

Technical background

Bentley has developed a boot system update pack to resolve customer issues.

Check

If the vehicle is not already listed as repaired in the "Repair history" (in Elsa pro), check for the presence of a white campaign identification mark (see Figure 25), should neither be evident carry out the required work in accordance with these instructions

Genuine parts

The required replacement parts should be ordered from Bentley Motors Limited Crewe or through your regional Bentley parts distribution centre

Tools

Part number	Description
WT10370	Boot CM update cable
WT10371	USB memory stick boot CMSW
WT10372	Boot hinge setting tool LHGT
WT10373	Boot hinge setting tool RHGT
WT10374	Boot hinge setting tool LHGTC
WT10375	Boot hinge setting tool RHGTC
WT10354	Force measurement gauge

• **Notes**

Work

Note some items in this campaign are model specific where this is the case it is clearly identified.

The campaign consists of **software update section** and the rectification for **High closing force section**.

Software update section

- Boot lid function and force gauge test 1
- On New Continental GT replace gas struts
- Software update
- Check list A
- Boot lid function and force gauge test 2

Required Diagnostic Tool status for this Campaign

Bentley Brand Data version 3.0.1 or higher required



Figure 1a

•

Prior to performing software update on Continental models ensure the motor driven, right hand, hinge (1) is serviceable, check for excessive play in hinge pivots, manipulate the open hinge manually whilst checking for excessive play. Ensure the hinge function is uncompromised and no misalignment exists in the hinge elements, replace individual driven hinge where necessary (see Figure 1a)

Software update section

Boot lid function and force gauge test 1

1. Ensure the boot lid will perform three consecutive power open close cycles. Note remedial work at this stage to ensure boot driven hinge is serviceable and has a basic power open and power close function may not necessarily be reimbursed under warranty



Figure 4

2. Carry out closing force gauge test – to perform this test the boot lid is operated to close and stopped short of closing on the power close cycle by pressing the close button again and manually catching the boot lid in the final centimetres of the close cycle, just before it engages with the striker pin. At this point the boot lid is resting on the boot lid seal, once in this state the force gauge (WT 10354) set to display Kg should be set in position *A on the boot lid. Apply load to the boot lid via the force gauge recording the load in Kg at which the boot lid power latched (see Figure 4).
3. Record results

***Note: Position A for the force gauge is the intersection on the centre line of the boot lid and the rear lip of the boot lid. Place protection between the boot lid painted surface and the gauge foot at position A to avoid paint damage. An offcut of leather will suffice (see Figure 4)**

Replace gas struts – New Continental GT only

1. New Continental GT remove and replace both gas struts. Fit the new gas struts (part number 3W8827550J) ensuring the ball mounting is clean before adding a small quantity of shell Retinax "A" grease to the ball mounting. "Refer to Boot lid fittings – Boot lid gas struts – To remove and fit" Rep.Gr.55

Software update

As the boot lid control unit is not on the CAN-Bus Bentley has created specific hardware and software to enable a software update to be performed.

1. Ensure a suitable battery charger is correctly connected to the vehicle electrical system for the duration of this procedure
2. Access the boot lid control unit. Refer to Boot lid control unit (J605) – To remove and fit Rep.Gr.97
3. Disconnect and remove the boot lid control unit (A) from the vehicle wiring



Figure 1

4. Connect boot control module update cable (part number WT10370) to the Bentley diagnostic tool VAS5052A or later approved equipment (see Figure 1)



Figure 2

5. Insert USB memory stick boot CMSW (part number WT10371) into USB port of Bentley diagnostic tool (see Figure 2)

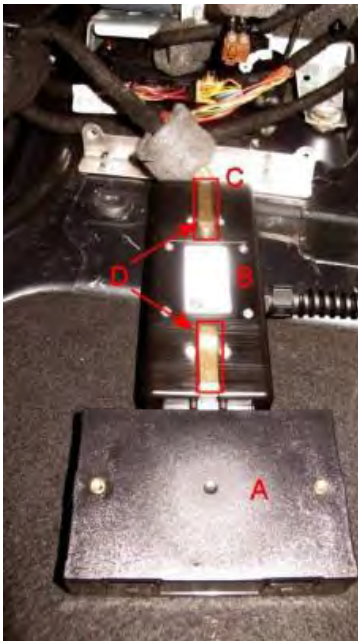


Figure 3

6. Insert boot control module 'A' and its associated plug 'C' into each end of connector 'B' of the boot control module update cable, ensure the connector release mechanism of the boot control module update cable (D) is facing up to avoid unexpected release of the module during software update (see Figure 3)
7. Switch on the ignition using the ignition key

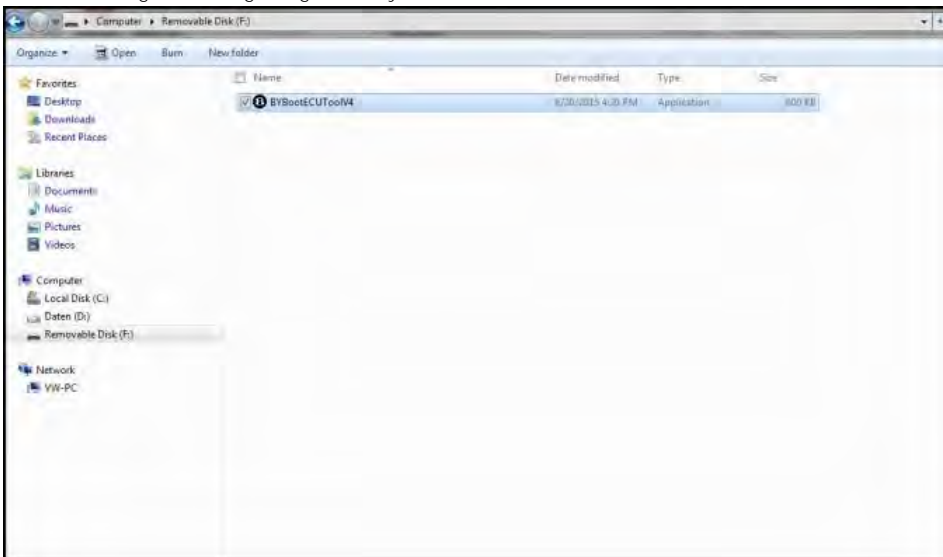


Figure 4a

8. From the diagnostic tool main desktop open USB memory stick (removable disc BYBootCUTTool) (see Figure 4a)
9. Select open application BYBootCUTTool

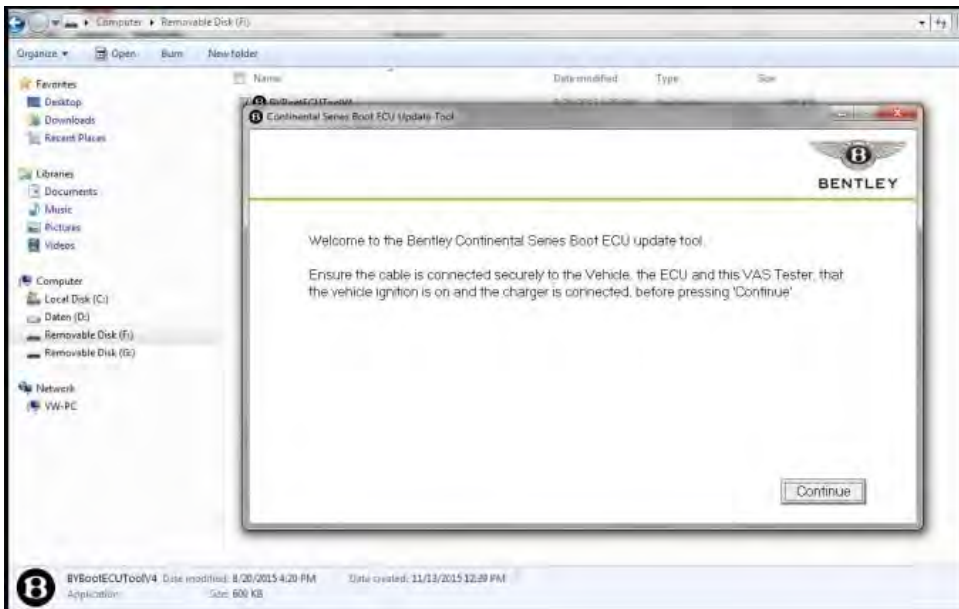


Figure 4

10. Follow screen prompts

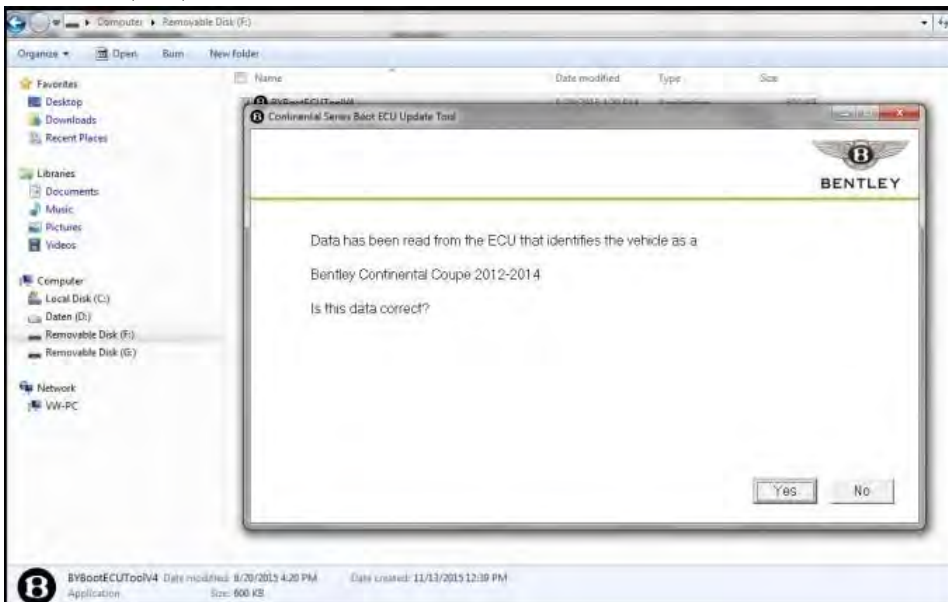


Figure 5

11. Communication with the control module will be established and the specifics of the vehicle identified

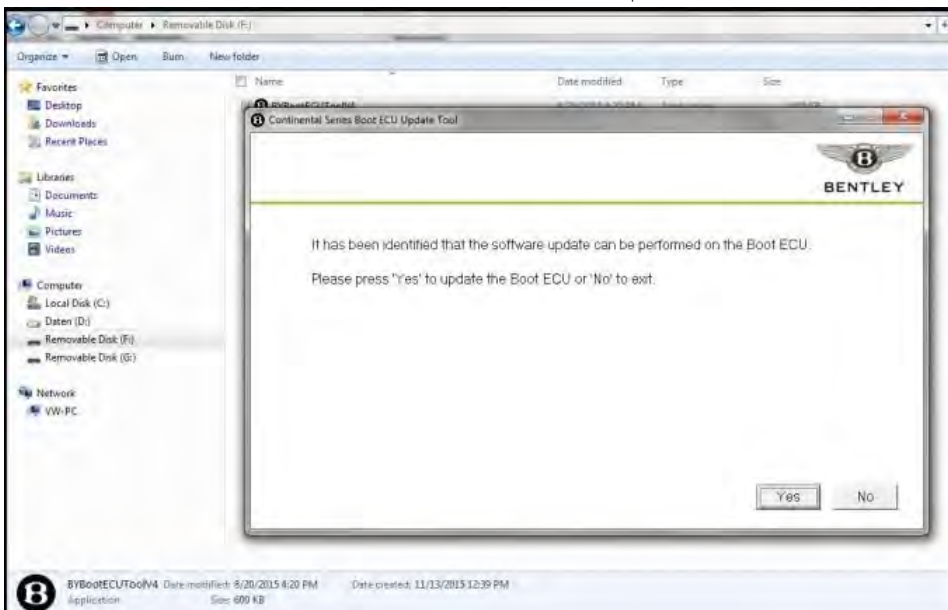


Figure 6

12. Select **Yes** to update (see Figure 6)

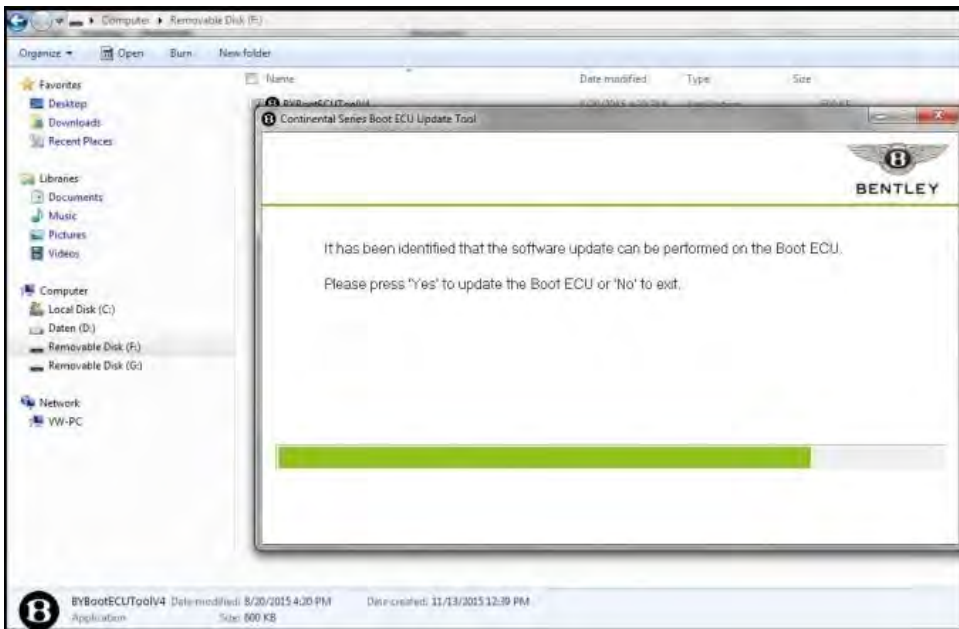
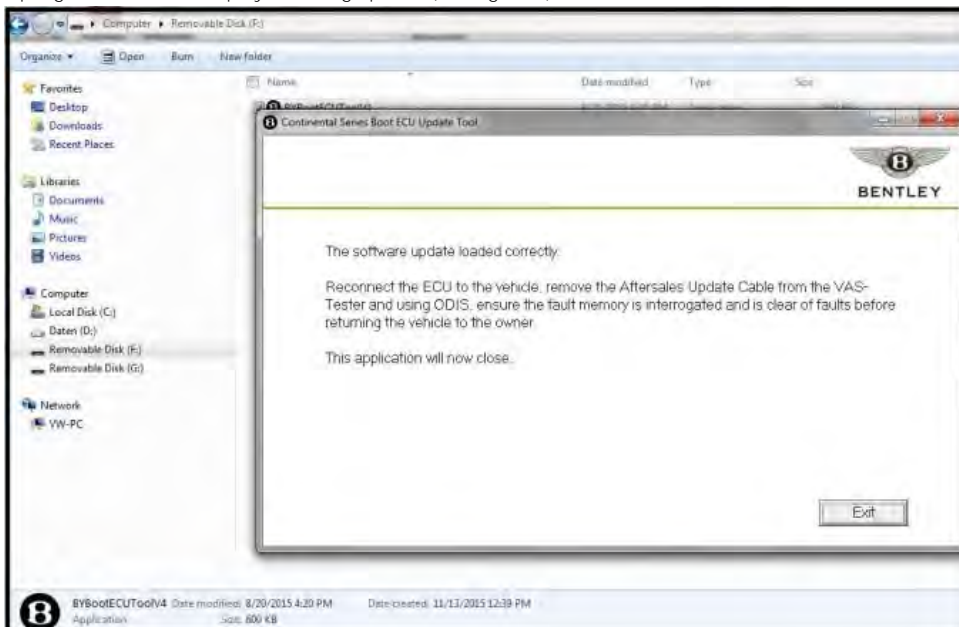


Figure 7

13. A progress bar will be displayed during update (see Figure 7)



14. At *The software update loaded correctly* screen select *Exit*
15. Eject mass storage device and remove USB memory stick boot CMSW
16. Switch off the ignition
17. Disconnect boot control module update cable from vehicle and reconnect boot control module to vehicle harness and refit boot control module to vehicle
18. Before testing on New Continental GT only ensure gas struts (part number 3W8827550J) have been fitted

Check List A – Routine check



Ensure the boot lid seal is correctly fitted

Figure 1



Figure 1a

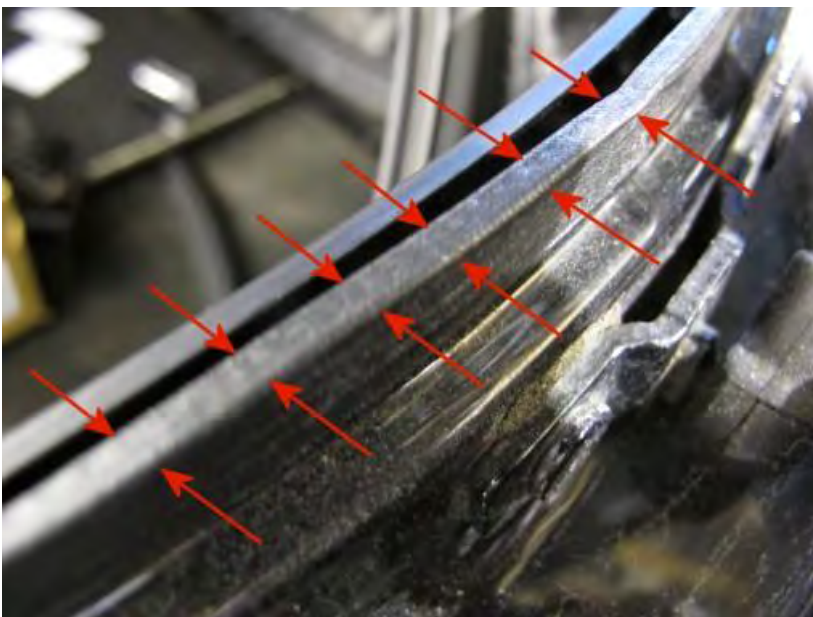


Figure 1b

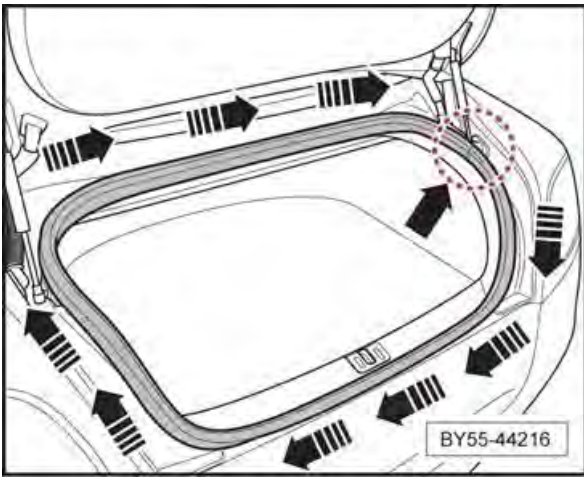


Figure 2

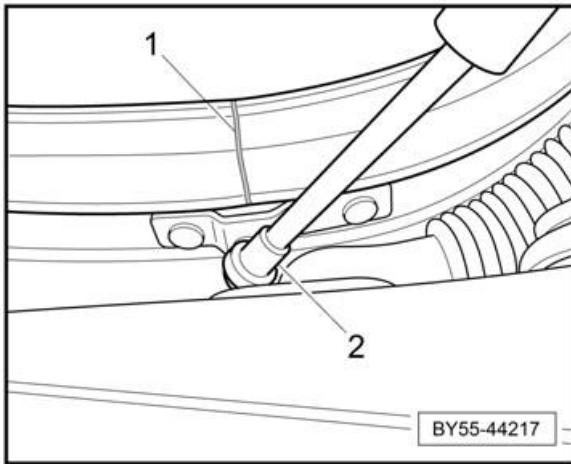


Figure 2a

1. Ensure the boot lid seal is correctly fitted (see Figure 1a) specifically the knock-on strip element of the seal must be fully engaged on the lip of the boot aperture and not as shown in figure 1 where it is displaced by the boot trim. Ensure the obscuration tape fitted to the boot aperture flange is not restricting seal fitment (see Figure 1b). Check seal is correctly orientated, the vulcanised joint -1- should be to the centre line (+/- 10mm) of the ball joint -2- on the boot lid gas strut (see Figure 2 and 2a)
2. Over check torque on the bolts securing the boot hinge to the body for all cars at this stage the over check torque is $28\text{Nm} \pm 2$. **IMPORTANT:** Ensure the socket used to over check the fasteners is 'as new' and that it is fully engaged with the fastener. Tapping the socket with small dead blow hammer to assist the tool in cutting into the paint to aid engagement is recommended. Releasing harness conduit clips from each hinge will assist in access. When applying specific torques to fasteners ensure any adaptors or extensions used on the torque wrench are accounted for in your calculation for applied torque
- 3.

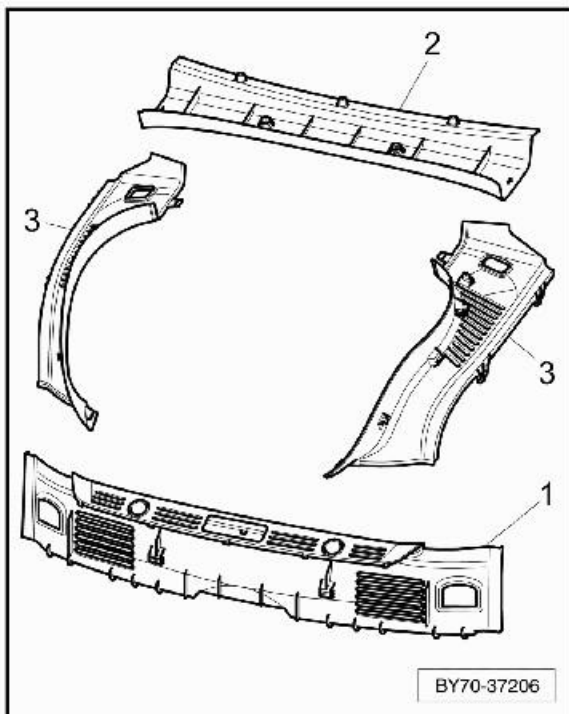


Figure 3

4. Ensure the boot aperture finishers (see Figure 3) are secure, correctly fitted and not compromising the boot lid seal fitment, rectify and replace damaged clips where necessary

Boot lid function and force gauge test 2

1. Ensure the boot lid will perform three consecutive power open close cycles.



Figure 4

2. Carry out closing force gauge test – to perform this test the boot lid is operated to close and stopped short of closing on the power close cycle by pressing the close button again and manually catching the boot lid in the final centimetres of the close cycle, just before it engages with the striker pin. At this point the boot lid is resting on the boot lid seal, once in this state the force gauge (WT10354) should be set in position *A on the boot lid. Apply load to the boot lid via the force gauge recording the load at which the boot lid power latched (see Figure 4)
3. Record results

***Note: Position A for the force gauge is the intersection on the centre line of the boot lid and the rear lip of the boot lid. Place protection between the boot lid painted surface and the gauge foot at position A to avoid paint damage. An offcut of leather will suffice (see Figure 4)**

The load measured should be less than 1 Kg. If the load measured to initiate the close cycle is less than 1 Kg or the boot latches under its own weight and the boot completed three consecutive power open and close cycles then the campaign is complete, apply a white campaign identification mark to the boot striker plate (see Figure 25).

If the measured load required to initiate the close cycle is 1 Kg or higher and or the boot lid fails to perform three consecutive power close and open cycles then reference table 1

Action when closing force measured at a load of 1Kg or greater and or function failure	
Continental GT	Raise a DISS detailing load reading and failure mode. If other dynamic anomalies are observed during the boot test cycle a video clip should be attached – Product Support will advise next steps
Continental GTC	
New Continental GT	Raise a DISS detailing load reading and failure mode. If other dynamic anomalies are observed during the boot test cycle a video clip should be attached – Product Support go ahead required to carry out Check list B - High closing force
New Continental GTC	

Table 1

Check List B (stage 1) – High closing force section

Product Support go ahead required to progress at each stage of the 3 stages that make up Check list B - High closing force

Check and adjust boot lid hinge

Prior to adjusting the boot lid hinge ensure the hinge (1) is serviceable, check for excessive play in pivots ensure the hinge function is uncompromised and no misalignment exists in the hinge elements, replace individual hinges where necessary.

Check the striker pin (2) is serviceable the pin surface should be undamaged and pin should rotate freely by hand, free off and lubricate where necessary, in extreme cases a replacement may be required

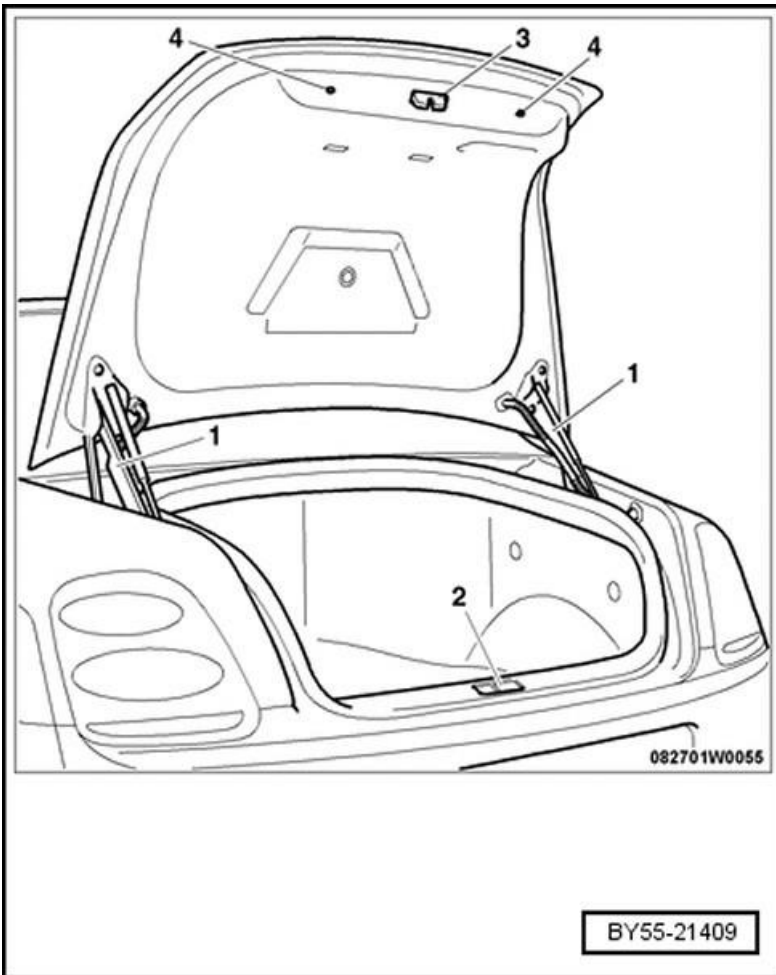


Figure 5

The position of the boot lid can be set by adjusting the hinges (1) or the striker (2). The locking latch (3) is attached directly to the boot lid. It does not have slotted holes and therefore has no means of adjustment. Before any adjustments are made the car must be resting on its wheels and on level ground. Ensure the socket used to release the fasteners is 'as new' and that it is fully engaged with the fastener. Tapping the socket with small dead blow hammer to assist the tool in cutting into the paint to aid engagement is recommended. Releasing the harness conduit clips from the each hinge will assist in access. When applying specific torque to fasteners ensure any adaptors or extensions used on the torque wrench are accounted for in your calculation for applied torque

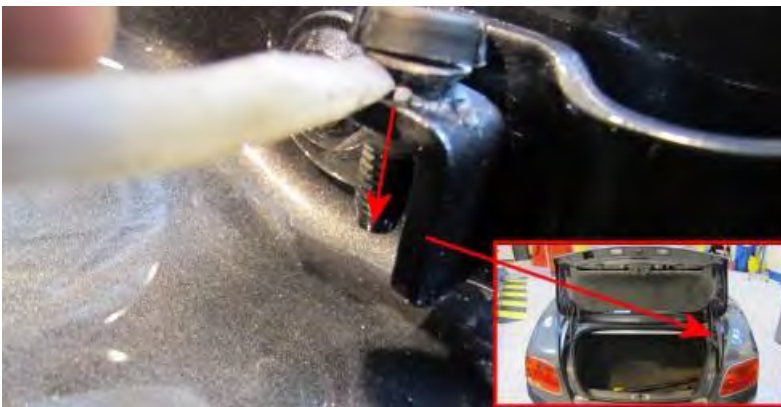


Figure 6

Remove the plastic cap and wind down the boot lid hinge bump stops located on each hinge assembly, these are adjusted back after the setting procedure (see Figure 6)



Figure 7

For New GT – use gauge part number WT10372 left hand or WT10373 right hand

Gauge setting hinge. Clean the drain channel to ensure the gauge will be fully engaged with the channel surface.

The gauge is loaded into the drain channel from the front of the hinge in direction L. With the gauge correctly positioned the full length of the gauge will be in contact with both vertical sides of the drain channel whilst sitting on the channel bottom

In this position the rearward section of hinge should be touching the gauge at point K (see Figure 7). If the gauge is tight or loose, not touching, at K then slacken both fasteners and adjust hinges to achieve the base setting at K. The gauge adjustment at K is achieved at the hinge rear mounting bolt therefore although the front mounting bolt has to be slackened the hinge should only rotate at the front bolt with the vertical adjustment performed at the rear bolt. Re-tighten the fasteners **Note New GT** the torque figure of 28Nm \pm 2 is critical



Figure 8

For New Continental GT Convertible – use gauge part number WT10374 left hand or WT10375 right hand

Gauge setting hinge. Clean the drain channel to ensure the gauge will be fully engaged with the channel surface.

The gauge is loaded into the drain channel from the rear of the hinge in direction L. With the gauge correctly positioned the full length of the gauge will be in contact with both vertical sides of the drain channel whilst sitting on the channel bottom

In this position the rearward section of hinge should be touching the gauge at point K (see Figure 8). If the gauge is tight or loose, not touching, at K then slacken both fasteners and adjust hinges to achieve the base setting at K. The gauge adjustment at K is achieved at the hinge rear mounting bolt.

– **Note New Continental GT Convertible** new bolts (increased length) must be fitted and the torque for these bolts are critical at 20Nm + angle 45°
new bolt is part number is N.910.097.01 x 4 off

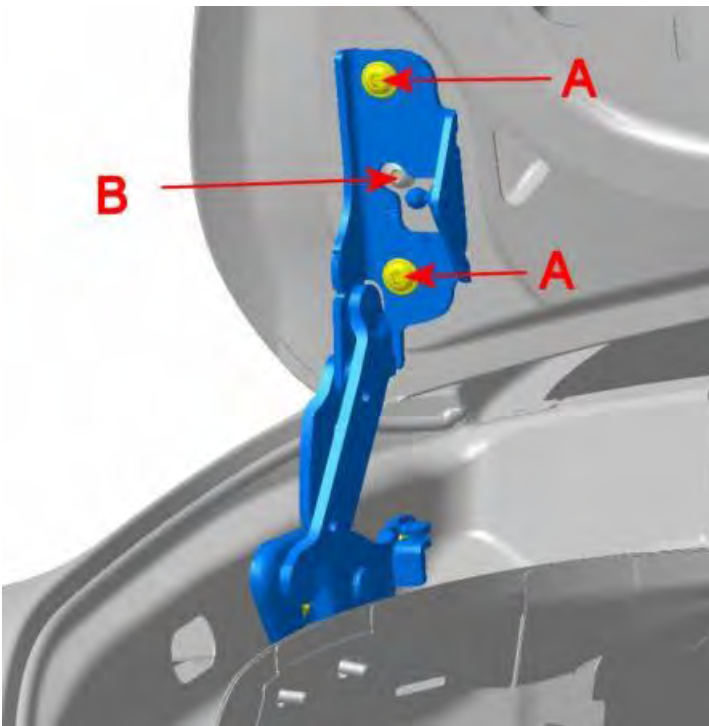


Figure 9

AllCars - Slacken the fasteners (A) securing the boot lid. (see Figure 9) **Note:** do not slacken fastener B at this time. Allow the hinges to "float" ensuring that left and right hinge are not working against each other and operate in same plane without undue resistance. Re-tighten the four fasteners (A) 20Nm \pm 2

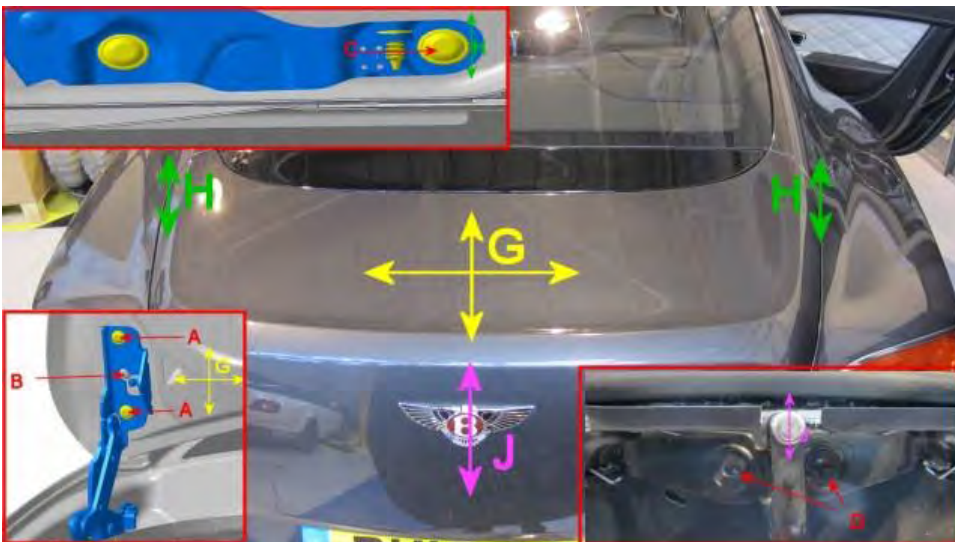


Figure 10

Ensure the boot seal is fitted correctly before manually closing (to control closing avoiding damage in the event that a clash has been introduced by adjustments) the boot lid. Check the boot lid for aesthetic fit and profile.

- Adjustments Reference Figure 10
- (H) Adjustment in height profile adjacent to the rear screen is achieved at the forward, nearest the rear screen, part of the hinge, slacken both hinge fasteners but make adjustments primarily around fastener C to raise or lower at point H. Re gauge check hinge to maintain gauge setting B figure 7 (GT) figure 8 (GTC)
- (J) Adjustment in height profile at the rear of the boot lid is achieved at the striker plate, slacken both fasteners D then raise or lower at point J.
- (G) To achieve panel gaps the boot lid surface can be moved in both axis at the hinge / boot lid connection, slacken fastener B and fasteners A to release the captive plate to allow adjustment

Bootlid function and force gauge test

1. Ensure the boot lid will perform three consecutive power open close cycles.
2. Carry out closing force gauge test – to perform this test the boot lid is operated to close and stopped short of closing on the power close cycle by pressing the close button again and manually catching the boot lid in the final centimetres of the close cycle, just before it engages with the striker pin. At this point the boot lid is resting on the boot lid seal, once in this state the force gauge (WT10354) should be set in position *A on

the boot lid. Apply load to the boot lid via the force gauge recording the load at which the boot lid power latched (see Figure 4)

3. Record results

***Note: Position A for the force gauge is the intersection on the centre line of the boot lid and the rear lip of the boot lid. Place protection between the boot lid painted surface and the gauge foot at position A to avoid paint damage. An offcut of leather will suffice (see Figure 4)**

The load measured should be less than 1 Kg. If the load measured to initiate the close cycle is less than 1 Kg or the boot latches under its own weight and the boot completed three consecutive power open and close cycles then the campaign is complete, apply a white campaign identification mark to the boot striker plate (see Figure 25).

If the measured load required to initiate the close cycle is 1 Kg or higher and or the boot lid fails to perform three consecutive power close and open cycles then reference table 2

Action when closing force measured at a load of 1Kg or greater and or function failure

Update DISS detailing load reading and failure mode. If other dynamic anomalies are observed during the boot test cycle a video clip should be attached – Product Support go ahead required to continue Check list B (stage 2) - High closing force

Table 2

Check list B (stage 2)

Fit lighter springs – Boot lid striker doors

Remove the boot sill finisher cover. "Refer to Boot aperture finishers - To remove and fit" Rep.Gr. 70



Figure 11

Replace both boot lid striker door springs (A) (see Figure 11). First replace the left hand spring using the right hand as a reference



Figure 12

Detached plastic retaining cap and discard (see Figure 12)

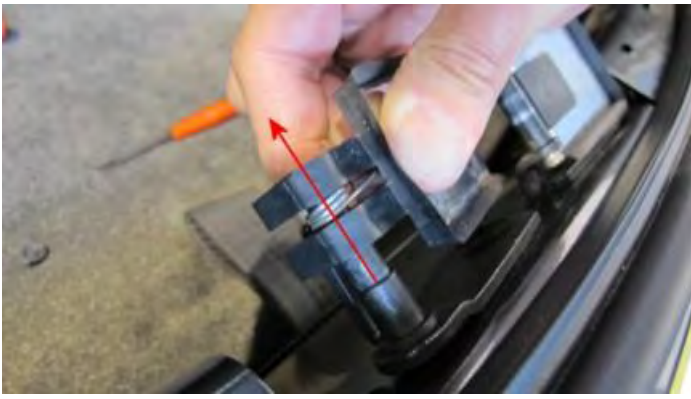


Figure 13

Slide door and spring off the bearing pin discard the original spring (see Figure 13)



Figure 14

Position the new spring (part number 3W0827441 or 3W0827665) in the removed door. Whilst holding the spring tang back (1) partially fit door and new spring onto bearing pin (see Figure 14)

- Push the door and spring assembly fully (2) onto the bearing pin before releasing the spring tang (1) onto interlock (see Figure 14)
- Fit the new retaining cap (part number 3W0837106)

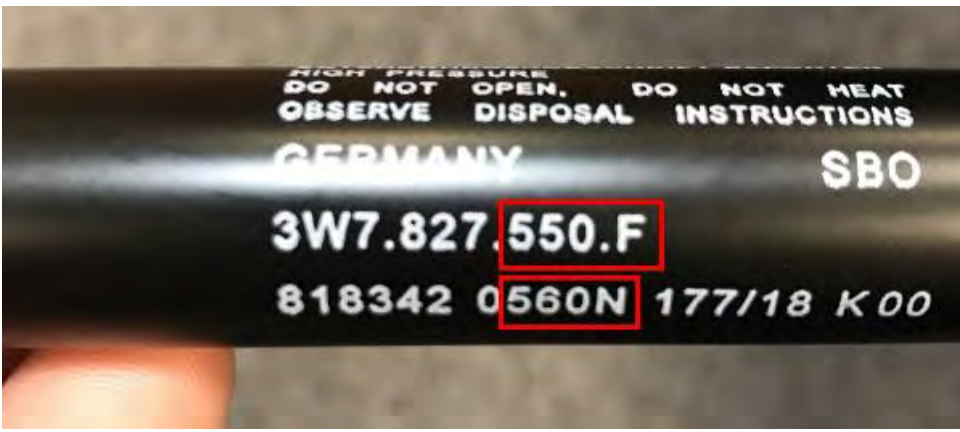
Boot lid gas strut check

General integrity and serviceability check of boot lid gas strut – replace if defective

- Check for signs of wear in the ball end of the gas strut
- Ensure ball and sockets are clean and apply fresh grease where necessary (shell Retinax "A")
- Ensure ball end clips are fitted correctly and gas struts are fitted the correct way up. The main body of the gas strut connects to the boot lid with the rod end connecting to the car body (see Figure 5)
- Check correct gas strut part number and hand of use is fitted

New GT Convertible:

Correct left hand side strut **3W7827550F(560N)** - marked in White writing.



Correct right hand side strut **3W7827550E (480N)** - marked in Blue writing.



Should any of the boot lid struts not be correct as detailed above, replace the incorrect strut/s according to ETKA.

Latch cover check

Inspect the area of the latch cover that receives the striker pin if damage is evident indicating a clash with the striker pin then replace the cover with the latest part which has a wider opening "Refer to Boot lid trim panels - To remove and fit" Rep.Gr.70



Figure 15



Figure 15a

To replace remove and discard latch plastic cover (see Figure 15). Note: figure 15a shows the original cover, figure 15 shows the new cover



Figure 16a

With the original plastic cover removed modify the latch buffer by removing section B shown in figure 16a



Figure 16b

With section B cut and discarded from the main buffer to form part A (see Figure 16b) then the new latch plastic cover (part number 3W0827520A) can be fitted

Boot striker alignment



Figure 17

With the fit and profile of the boot lid set check and if necessary adjust the striker plate to ensure it is central in the boot latch striker plastic cover. To do this apply chalk to the boot latch striker plastic cover and operate the boot close function. If chalk is deposited on the striker pin then adjust the striker assembly to the left or right to reduce this occurrence. In the example the chalk is deposited on the left hand side of the pin this would necessitate the striker assembly being adjusted 1 or 2 mm to the right (see Figure 17). Once set remove chalk traces

1. Operate the boot close function several times and if required make final adjustments to ensure the boot function is faultless and the aesthetics are acceptable to the eye
2. Note: If boot lid is seen to lift at the front corner after closing adjust the striker plate down to increase engagement with boot lid seal and or adjust striker across to introduce resistance via latch and striker interaction. Do not introduce failure to latch
3. Note: If on New Continental GT Convertible the boot overload switch is triggering the boot open warning in the drivers information panel then apply section 2 of Technical Product Information 2033742 *Continental GT and GTC boot lid adjustments* and set the boot over load switch

Boot lid function and force gauge test

1. Ensure the boot lid will perform three consecutive power open close cycles.
2. Carry out closing force gauge test – to perform this test the boot lid is operated to close and stopped short of closing on the power close cycle by pressing the close button again and manually catching the boot lid in the final centimetres of the close cycle, just before it engages with the striker pin. At this point the boot lid is resting on the boot lid seal, once in this state the force gauge (WT10354) should be set in position *A on the boot lid. Apply load to the boot lid via the force gauge recording the load at which the boot lid power latched (see Figure 4)
3. Record results

***Note: Position A for the force gauge is the intersection on the centre line of the boot lid and the rear lip of the boot lid. Place protection between the boot lid painted surface and the gauge foot at position A to avoid paint damage. An offcut of leather will suffice (see Figure 4)**

The load measured should be less than 1 Kg. If the load measured to initiate the close cycle is less than 1 Kg or the boot latches under its own weight and the boot completed three consecutive power open and close cycles then the campaign is complete, apply a white campaign identification mark to the boot striker plate (see Figure 25).

If the measured load required to initiate the close cycle is 1 Kg or higher and or the boot lid fails to perform three consecutive power close and open cycles then reference table 3

Action when closing force measured at a load of 1Kg or greater and or function failure

Update DISS detailing load reading and failure mode. If other dynamic anomalies are observed during the boot test cycle a video clip should be attached – Product Support go ahead required to continue Check list B (stage 3) - High closing force

Table 3

Check list B (stage 3)

Each stage 3 check should be followed by a Boot lid function and force gauge test

Record results

Check boot lid latch micro switch function

1. Check for boot lid lifting at front corner after closing – if this is the case then the boot lid latch micro switch is suspect – Check function of boot lid latch micro switches
 - Connect the Bentley approved diagnostic tool to the vehicle On Board Diagnostic (OBD) socket
 - Using *guided fault finding* check and clear the vehicle of any fault codes

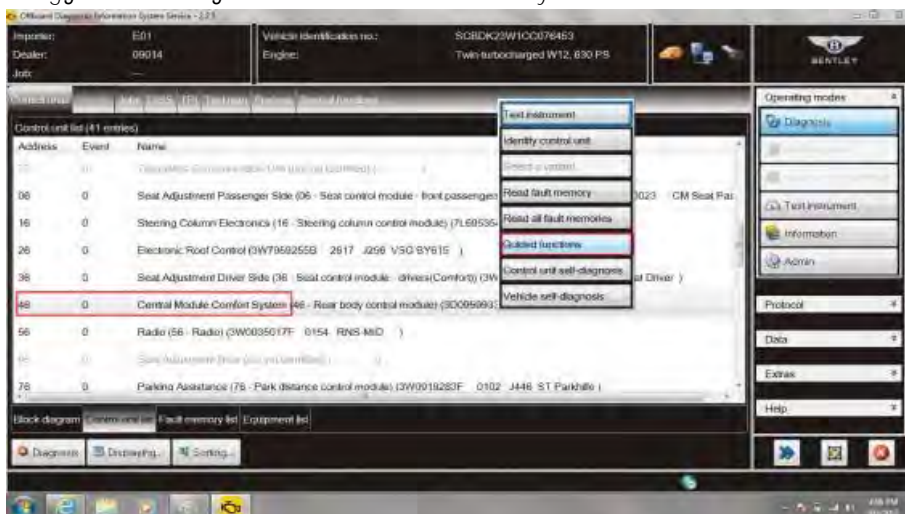


Figure 18

- Within Control units – Select (single touch) **46 Central Module Comfort System** – Reveal drop down menu (extended touch and release), Select *Guided functions* (see Figure 18)

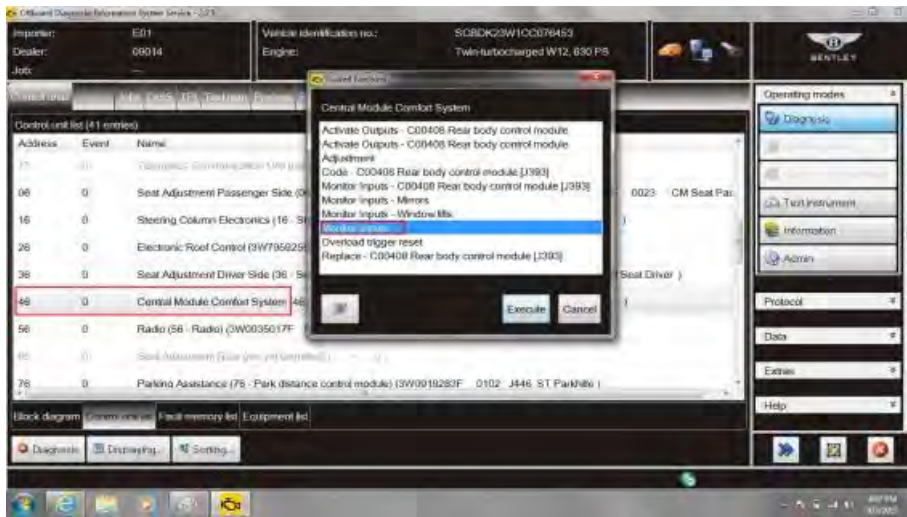


Figure 19

- Within Control units, *Central Module Comfort System*, Select *Monitor Inputs* and then Execute (see Figure 19)

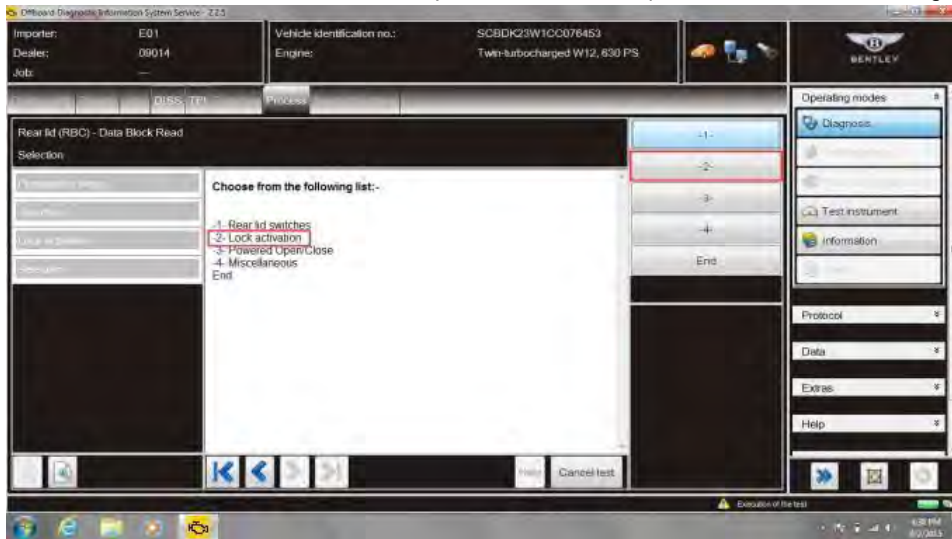


Figure 20

- Within Rear lid (RBC)-Data Block Read select *-2- Lock activation* (see Figure 20)



Figure 21

- The correct status for the boot lid micro switch assembly in the closed position is highlighted in Figure 21

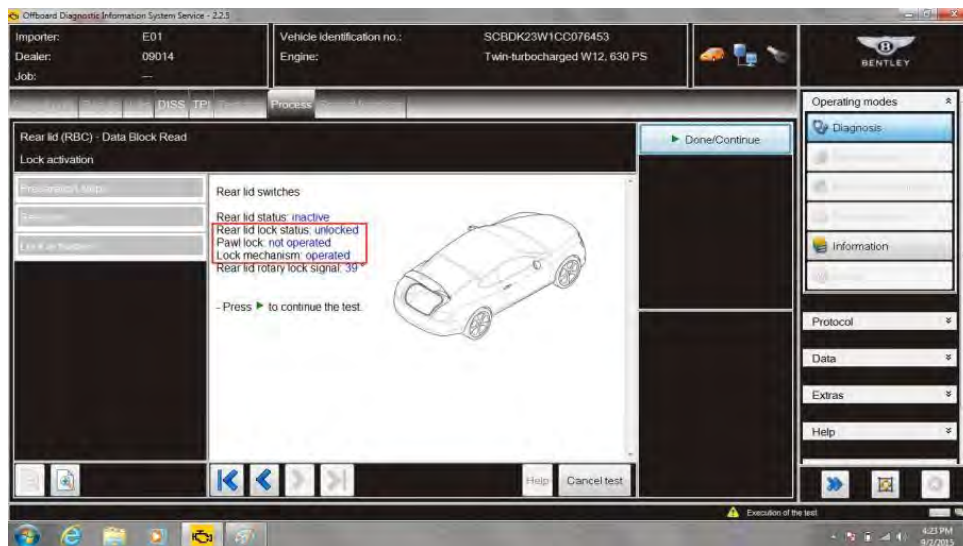


Figure 22

- The correct status for the boot lid micro switch assembly in the open position is highlighted in Figure 22
 - if either open or close status in relation to the micro switch is functioning incorrectly then replace boot latch assembly "Refer to Boot lid and fittings - Boot lid latch – To Remove and Fit – Rep.Gr.55.
 - Carry out closing force gauge test – if the load measured to initiate the close cycle is less than 1 Kg and the boot completed three consecutive power open and close cycles then the campaign is complete, apply a white campaign identification mark to the boot striker plate (see Figure 23) otherwise continue with stage 3 checks
2. **Check boot motor serviceability** – Check each item in turn followed by a boot lid function and force gauge test. Record results
- a. Torque check motor fixings
 - Carry out closing force gauge test – if the load measured to initiate the close cycle is less than 1 Kg and the boot completed three consecutive power open and close cycles then the campaign is complete, apply a white campaign identification mark to the boot striker plate (see Figure 23) otherwise continue with stage 3 checks



Figure 23

- a. Not applicable to GT Convertible derivatives - Remove tail lamp (right hand) on boot motor side to enable check. Check that the power boot motor is correctly aligned on to the hinge splines and that the locating peg (see figure 23) is fully engaged in the body location and tapping plate - where necessary loosen motor and correct alignment
- Carry out closing force gauge test – if the load measured to initiate the close cycle is less than 1 Kg and the boot completed three consecutive power open and close cycles then the campaign is complete, apply a white campaign identification mark to the boot striker plate (see Figure 23) otherwise continue with stage 3 checks



Figure 24

- a. Remove motor and inspect motor spline drive and hinge spline for damage replace damaged components where necessary (see Figure 24)
- Carry out boot lid function and force gauge test – if the load measured to initiate the close cycle is less than 1 Kg and the boot completed three consecutive power open and close cycles then the campaign is complete, apply a white campaign identification mark to the boot striker plate (see Figure 25)

Note: If at this point the boot lid system fails the boot lid function and force gauge test then update DISS detailing load reading and failure mode. If other dynamic anomalies are observed during the boot test cycle a video clip should be attached – Product Support will advise next steps

3. **On completion Re-set bump stops at the hinge.** Each bump stop should be set just below the panel so as not to hinder boot lid closure. The bump stop should only come into contact with the panel when outside forces are applied to the boot lid
4. Ensure all fasteners are torque tightened and paint chips produced as a result of releasing the painted hinge fasteners and hinge plates receive anti-corrosion protection
5. Refit any remaining removed trim items
6. On completion apply a white identification mark to the boot striker plate (see Figure 25)

Identification



Figure 25

On completion apply a white identification mark to the boot striker plate (see Figure 25)