



## FALSE WARNINGS THAT THE FRONT PASSENGER SEAT IS OCCUPIED WITHOUT THE SEAT BELT BUCKLED

New information provided by this revision is preceded by this symbol  .

This Service Information bulletin supersedes SI B72 04 17 **dated January 2019**

### What's new:

- New Diagnosis Chart / Flowchart for F90/G05 attached

### MODEL

G12 (7 Series) Vehicles produced to July 2018	G30 (5 Series) Vehicles produced to July 2018	G32 (6 Series Gran Turismo) Vehicles produced to July 2018	G01 (X3) Vehicles produced to July 2018
G02 (X4) Vehicles produced to July 2018	F90 (M5) Vehicles produced to August 2018	G05 (X5) produced from July 2018 to September 2018	

### SITUATION

Acoustic and visual warnings indicate that the front passenger seat is occupied and the seat belt is not fastened, when the seat is actually unoccupied.

If the situation is currently present, sit in the seat and move the seat to a different position then the POL (Passenger Occupancy Light) light will function correctly.

In some cases the Air bag Warning Light was illuminated. Advanced Crash Safety Module (ACSM) fault "930A1C - Front passenger seat occupancy detection transmitting fault (moisture)" is stored.

### CAUSE

1. Electronics (for example smart phones or laptops) are connected to the USB charging port or cigarette lighter and placed on the seat.
2. The seat was wet (e.g. very high humidity, spilled liquids or rain).
3. Faulty plug connection to Evaluation Electronics CIS (Capacitive Interior Sensing).
4. Excessive spacing between seat mat sensor signal wires and their grounding shield sleeve.

### CORRECTION

- Drying the seat mat due to moisture.
- If there is no moisture, secure loose cables and install 2 cable ties

- If the 2 cables ties are already installed properly, replace the seat mat
- Statement added to SI – **do not** replace the CIS electronics or the ACSM module for this situation

## PROCEDURE

For conditions that are similar to the situation described above:

1. Verify with customer that no objects were lying on the seat that could have caused the warnings.



Note: Electronic devices that are placed on the front passenger seat, e.g. laptop computers, mobile phones, etc., could cause the front passenger airbag warning lamp to activate.

This behavior occurs primarily with devices that are connected to the vehicle electrical system via a USB cable or other charger adapter.

In vehicles with an acoustic seat belt warning, this could cause the warning signal to sound.

2. Moisture on the seat surface can also cause a faulty seat occupancy detection. In this case ACSM fault 930A1C will be stored. Check for signs of moisture. If moisture is found, then dry the mat and clear the fault. If no moisture is found proceed to the next step.
3. If step 1 and 2 do not identify the cause of the warnings, access the label on the seat mat harness and follow the attached diagnosis flow chart. If the flow chart recommends installation of 2 cable ties, proceed to step 4.

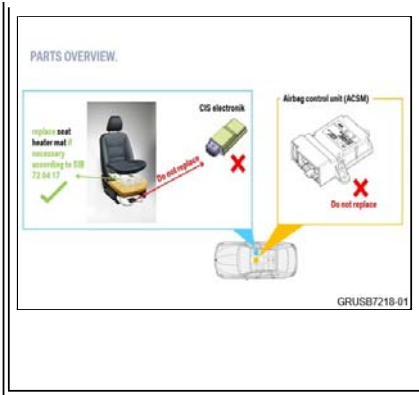
	<p>The example to the left shows an AI index of 01</p>
--	--

4. Install 2 cable ties on the seat wiring harness as shown in the attached repair instructions and in this video <https://tinyurl.com/V520218>
  - a. Set the cable tie tightening tool adjustment to 3.75 when securing the cable ties.
  - b. The cable ties **ONLY GO AROUND THE WIRING HARNESS**. Do not attach the cable ties to the seat frame.
  - c. The purpose of these two cable ties is to tighten the ground shield sleeve around the two signal wires.
5. Check the validity of the repair by ensuring no faults or check control messages are displayed.

## PARTS INFORMATION

Part Number	Description	Quantity
61 13 8 377 065	Cable tie	2
Refer to ETK	CIS seat mat	1 if needed

--	--



**Note: Replacing the CIS electronics or the ACSM module will not correct this issue.**

## WARRANTY INFORMATION

Covered under the terms of the BMW New Vehicle Limited Warranty for Passenger Cars and Light Trucks.

<b>Defect Code:</b>	<b>6577081400</b>	
<b>Labor Operation:</b>	<b>Labor Allowance:</b>	<b>Description:</b>
65 99 000	4 FRU	Work time to secure the CIS cable under the seat (Main work)
Or:		
65 99 000	2 FRU	Work time to secure the CIS cable under the seat (Plus work – Vehicle is already in the workshop)
Or:		
52 14 903	Refer to KSD/AIR	Replacing seat cover for front passenger seat
And, as applicable:		
52 14 982	Refer to KSD/AIR	Additional work: Heating element, seat

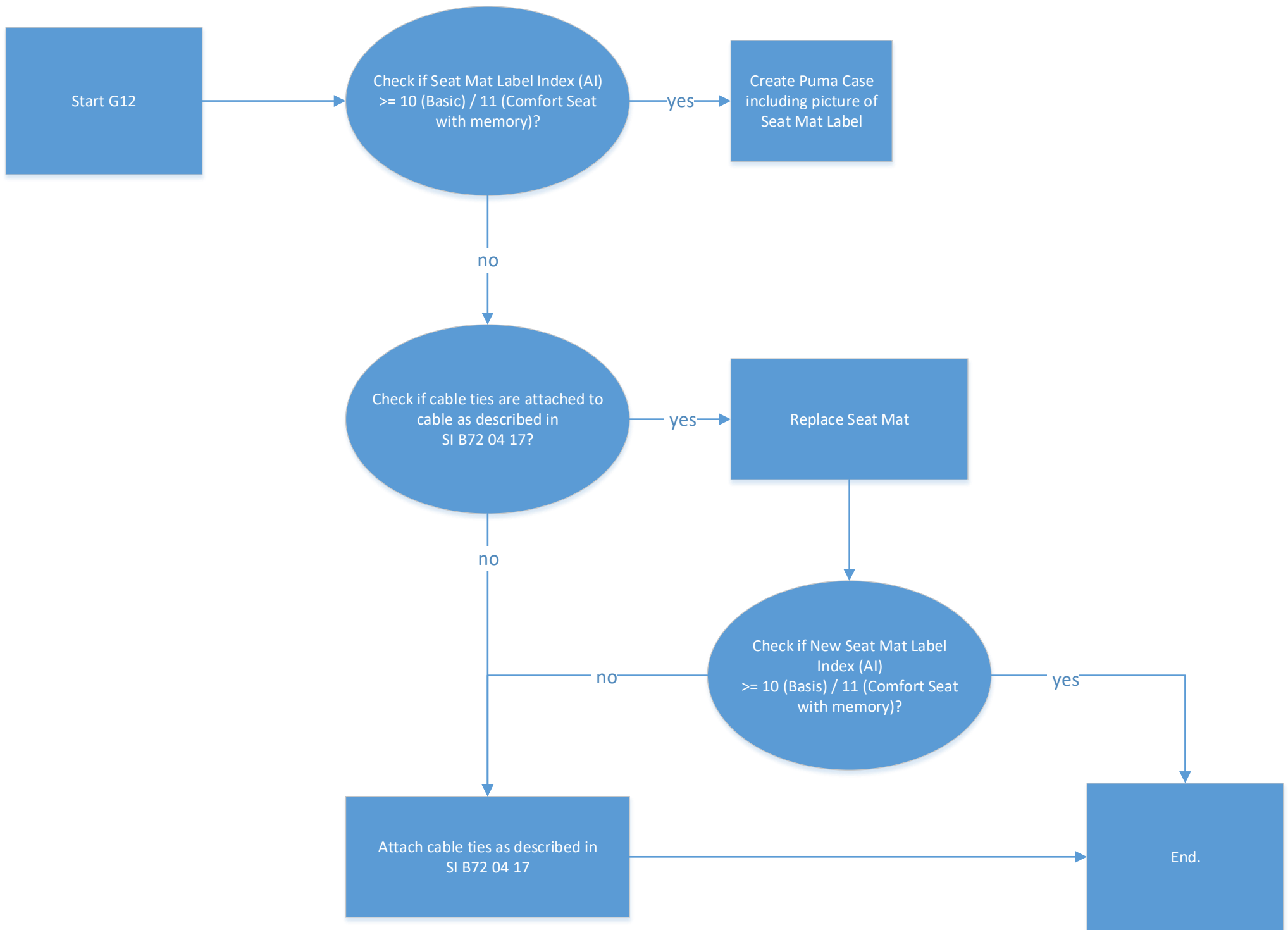
Posted: Tuesday, January 15, 2019

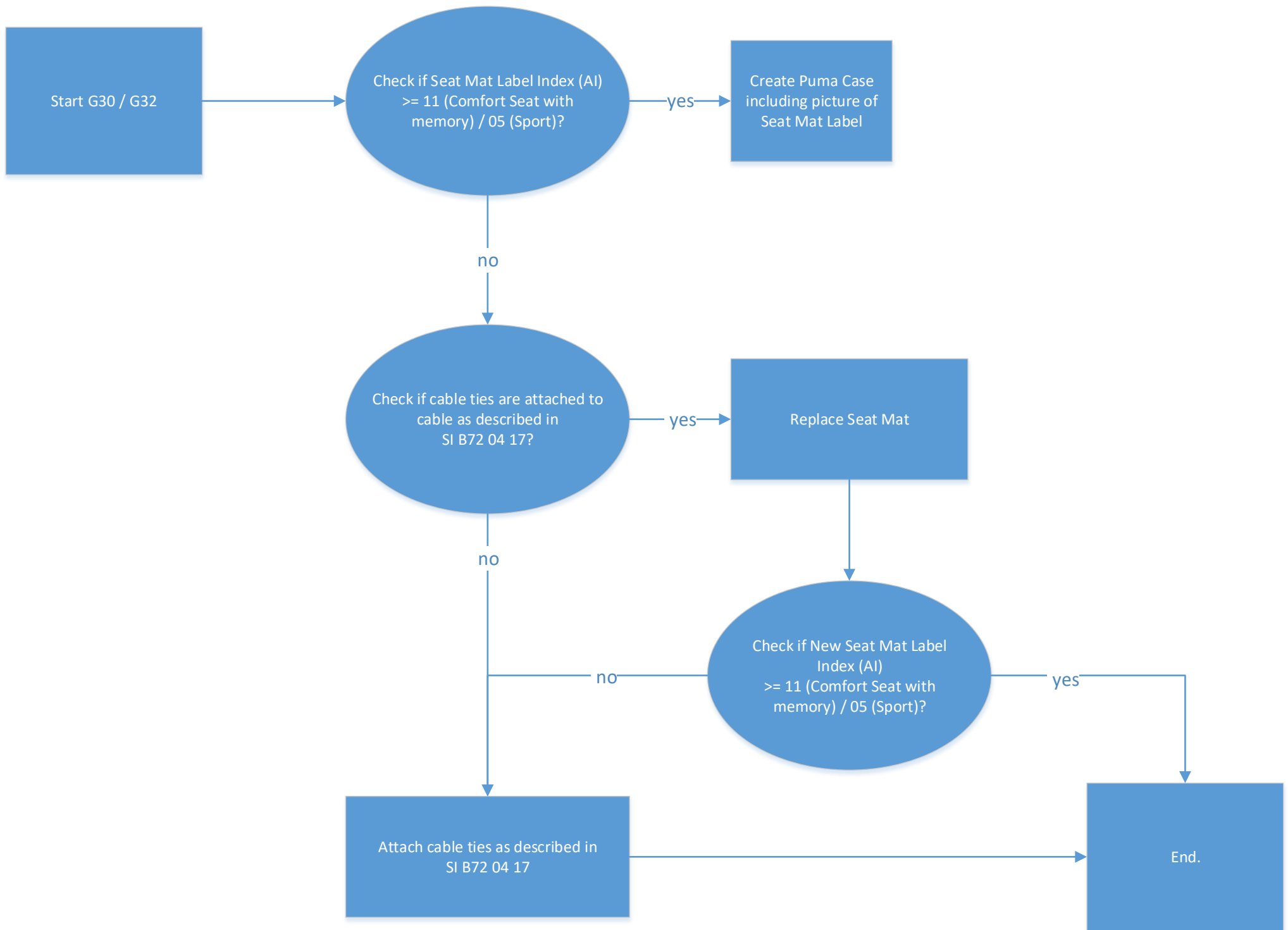
## ATTACHMENTS

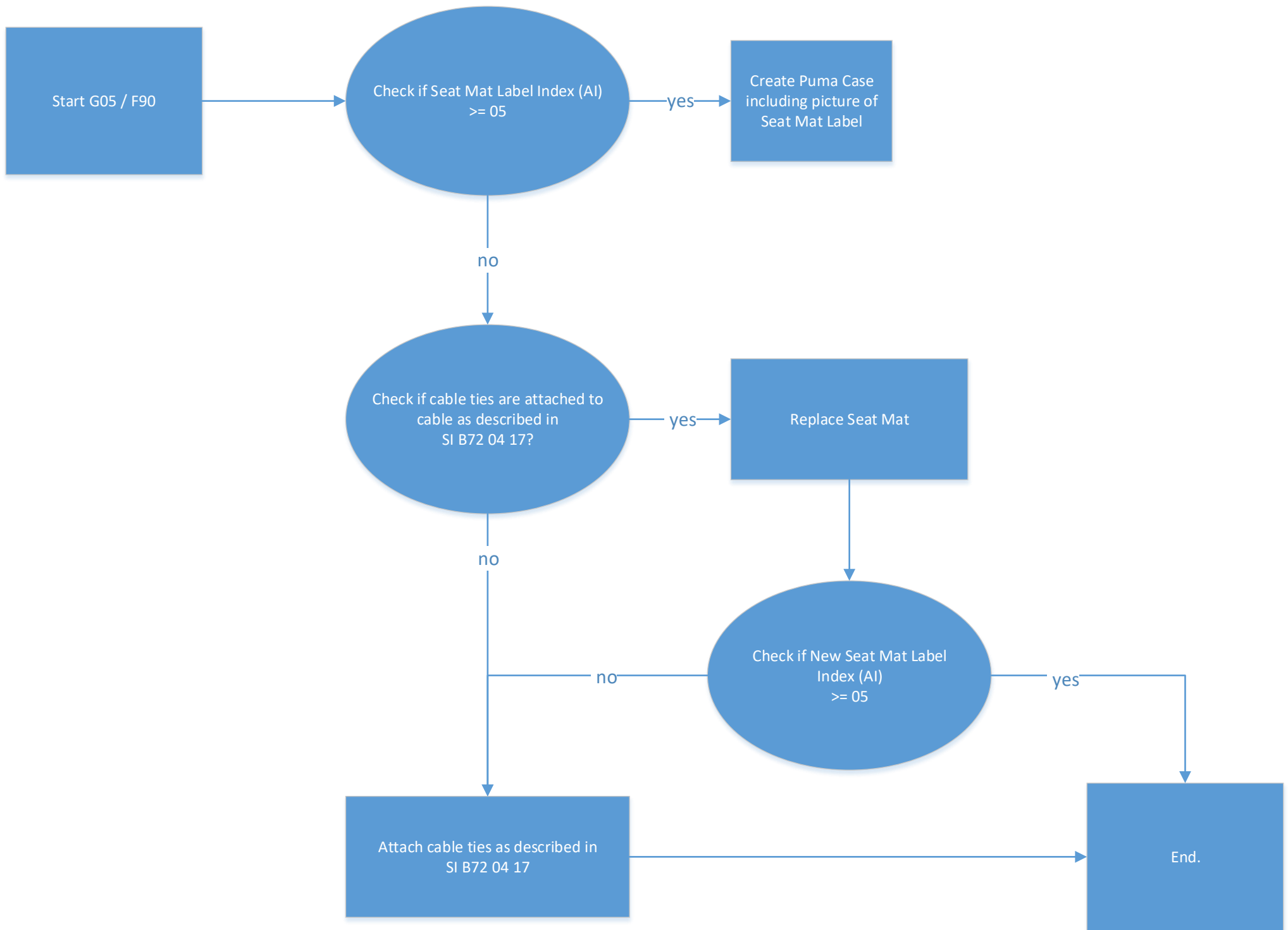
View PDF attachment [B720417 Diagnosis Chart](#).

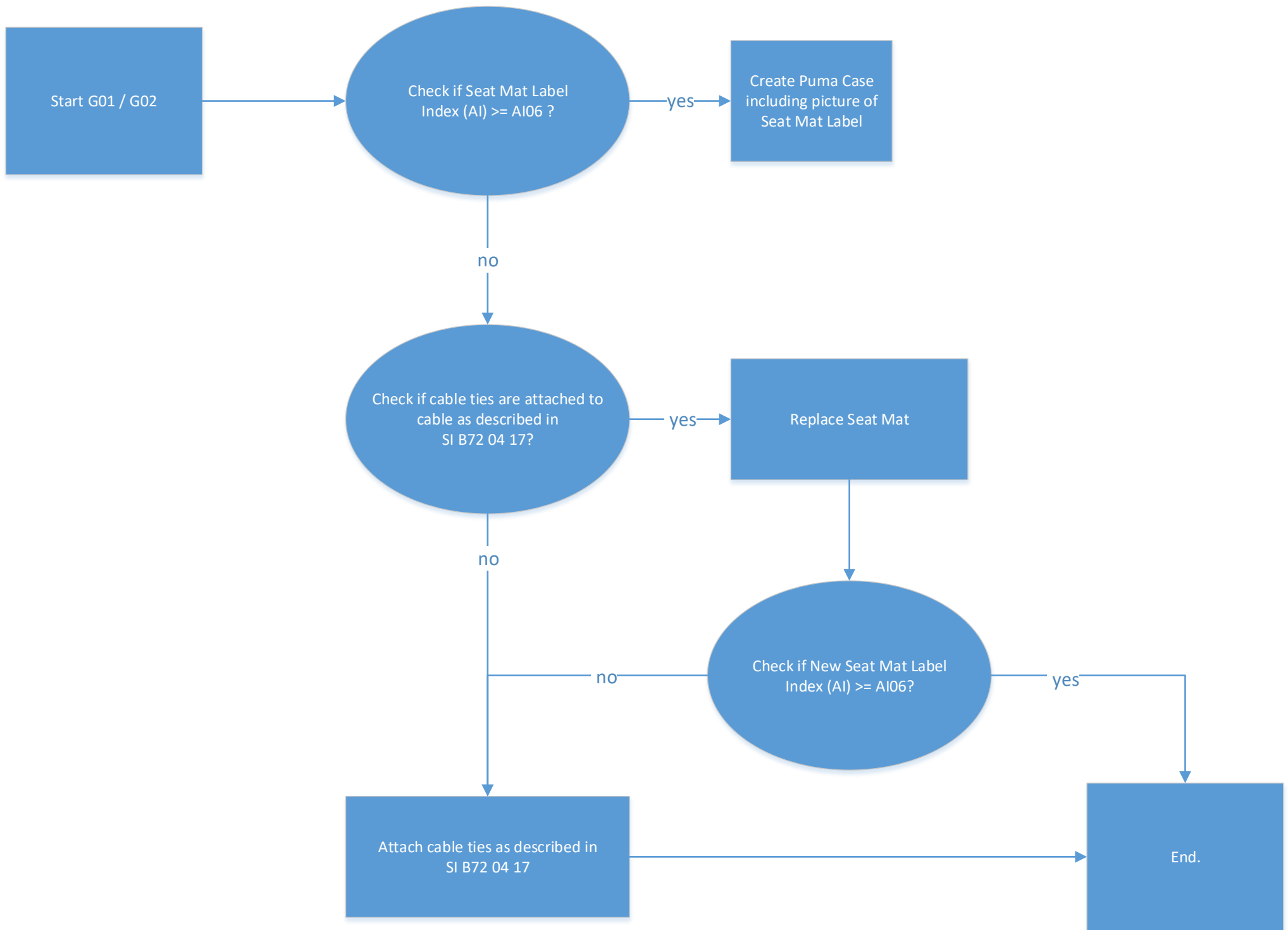
View PDF attachment [B720417 Repair Procedure](#).

[ Copyright ©2019 BMW of North America, Inc. ]







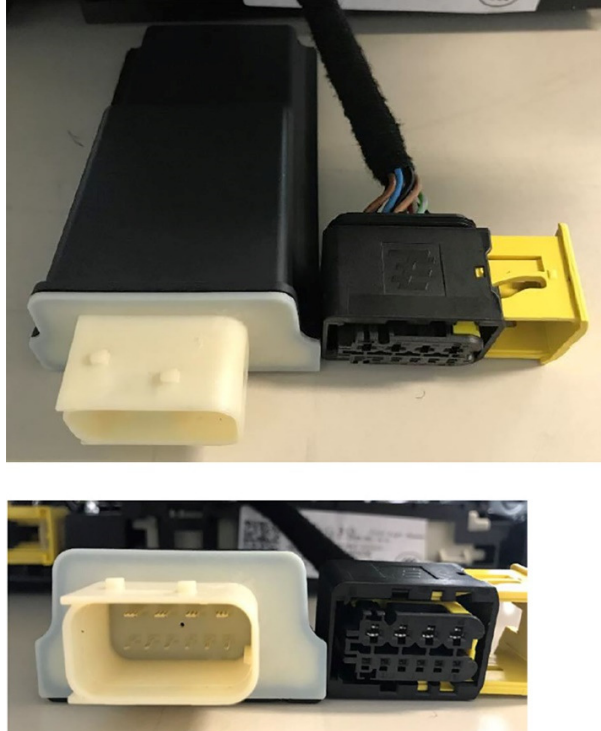




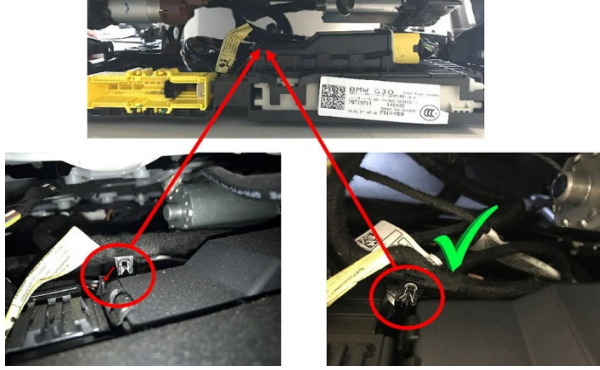
The SI **B72 04 17\_Attachment** supersedes **dated February 2018**

New information provided by this revision is preceded by this symbol 

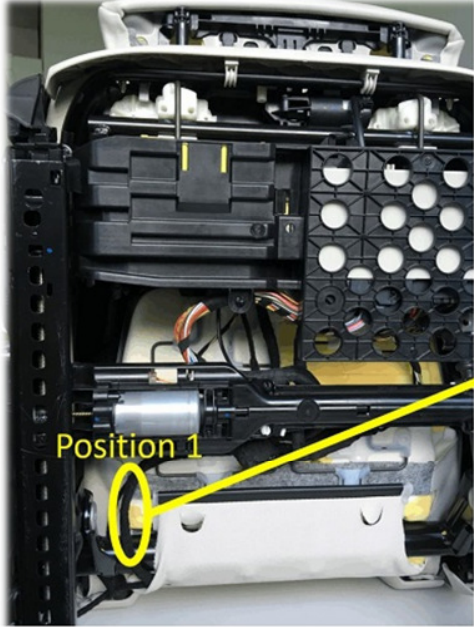
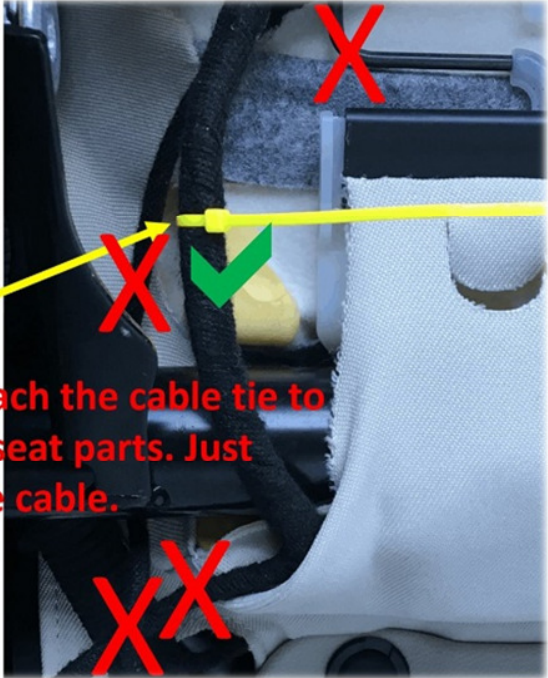
**PASSENGER OCCUPANCY DETECTION ERROR CORRECTION**

	<ol style="list-style-type: none"> <li>1. Move the front seat to its highest position.</li> <li>2. Detach the lower front seat trim.</li> <li>3. Disconnect the Evaluation Electronics (CIS) plug connection.</li> </ol>
	<ol style="list-style-type: none"> <li>4. Check the plug for conditions resulting in possible poor electrical connection – corrosion, bent pins, etc. – removing control unit if needed, as shown.</li> <li>5. Repair any connection problems.</li> <li>6. Securely re-install control unit, if removed.</li> <li>7. Reconnect plug into CIS.</li> </ol>

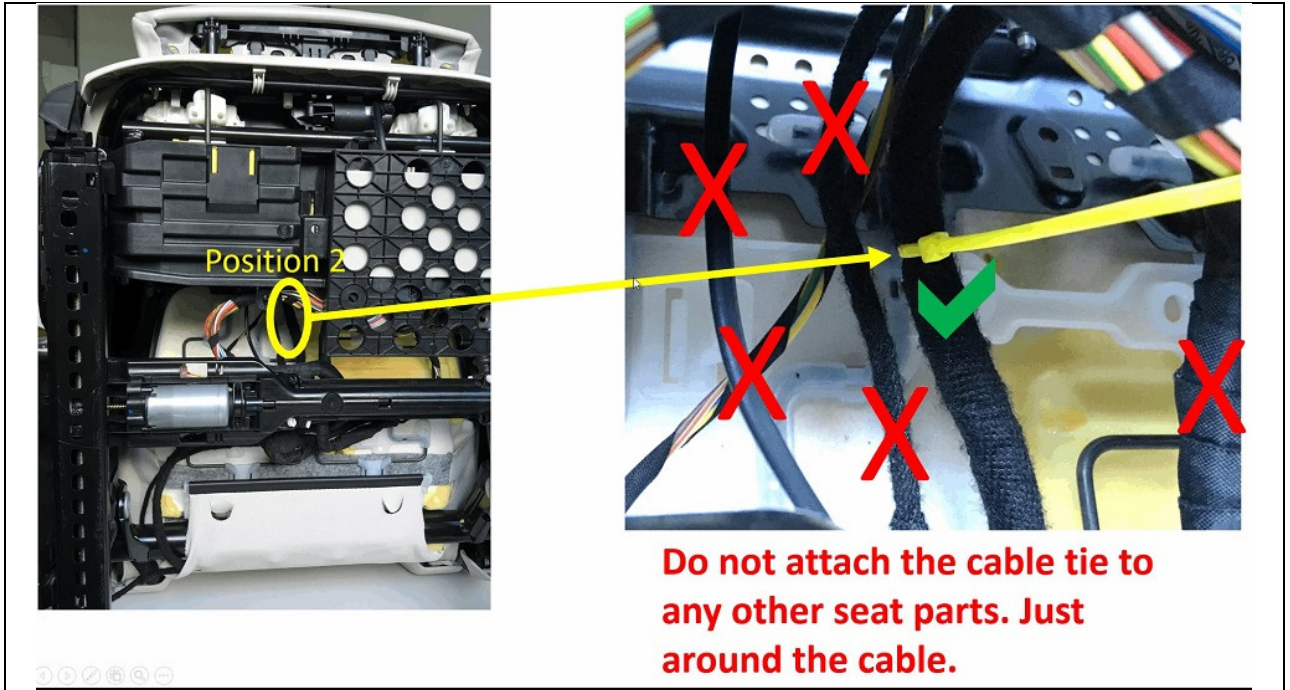


	<p>8. Secure the loose clip attached to cables, as shown.</p>
---	---

**UPDATE!** For cable tie position review the: <https://tinyurl.com/V520218>

<b>UPDATE!</b>	
 <p>Position 1</p>	 <p><b>Do not attach the cable tie to any other seat parts. Just around the cable.</b></p>
<p>First cable tie position as shown in above photo</p>	

**UPDATE!**



Second cable tie position as shown in above photo



**UPDATE !**

9. With the tool showing in the picture tie the cable only around the harness.

10. Re-attach seat trim panel.
11. Verify free motion of seat belt and seat adjustment.
12. Verify correct operation of occupant detection system. There should be no fault memory entries for airbag warnings.
13. Check the POL function