



SERVICE BULLETIN

Classification: EC15-017a	Reference: NTB15-108a	Date: January 17, 2019
------------------------------	--------------------------	---------------------------

NV200 AND TAXI; MIL ON WITH DTC P0101

This bulletin has been amended. See **AMENDMENT HISTORY** on the last page.
Discard all previous versions of this bulletin.

APPLIED VEHICLES: 2013-2019 NV200 (M20)
2014-2017 and 2019 Taxi (M20)

IF YOU CONFIRM

The MIL is ON and DTC P0101 (MAF SEN/CIRCUIT-B1) is stored.

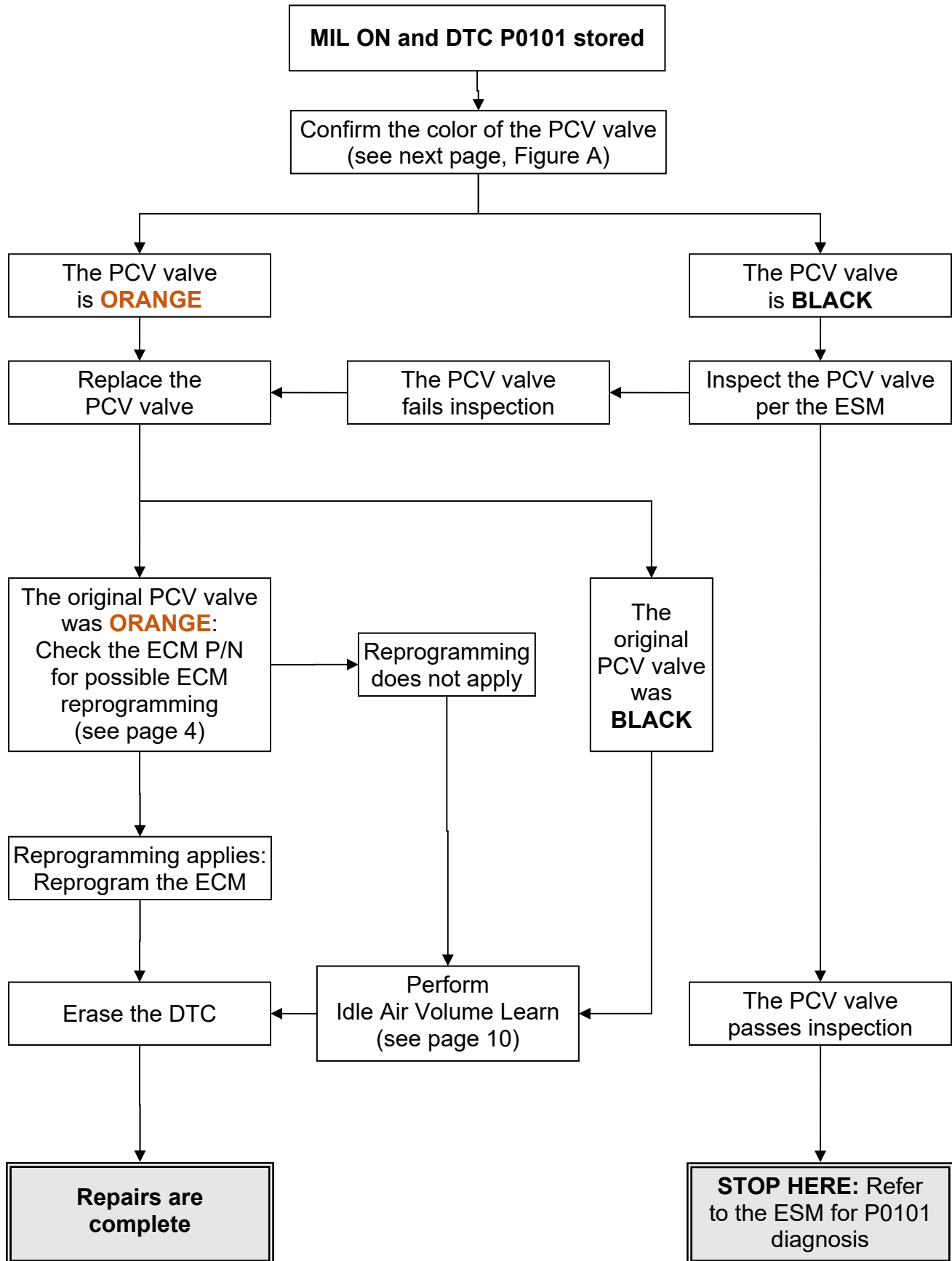
ACTION

Refer to the **FLOW CHART** on page 2.

IMPORTANT: The purpose of **ACTION** (above) is to give you a quick idea of the work you will be performing. You **MUST** closely follow the entire procedure as it contains information that is essential to successfully completing this repair.

Nissan Bulletins are intended for use by qualified technicians, not 'do-it-yourselfers'. Qualified technicians are properly trained individuals who have the equipment, tools, safety instruction, and know-how to do a job properly and safely. **NOTE:** If you believe that a described condition may apply to a particular vehicle, **DO NOT** assume that it does. See your Nissan dealer to determine if this applies to your vehicle.

FLOW CHART



SERVICE PROCEDURE

Inspect the PCV Valve

1. Open the hood and confirm the color of the PCV valve (see Figure A).
 - If the PCV valve is orange, go to step 2.
 - **NOTE:** Orange PCV valves were installed on 2014-2015 Taxi only.
 - If the PCV valve is black, skip to step 4.
2. Replace the PCV valve with the one listed in **PARTS INFORMATION**.
3. 2014-2015 Taxi: Check the ECM part number for possible ECM reprogramming (see page 4):
 - If ECM reprogramming applies: Reprogram the ECM, repairs are complete.
 - If ECM reprogramming does not apply: Skip to step 6.
4. Inspect the PCV valve per the ESM.
 - PDF and HTML Electronic Service Manuals (ESM): Refer to **EC > MR20DE > PERIODIC MAINTENANCE > POSITIVE CRANKCASE VENTILATION > Inspection** for PCV valve inspection.
 - If NG, go to step 5.
 - If OK, STOP HERE. Refer to ASIST and the ESM for DTC P0101 diagnosis.
5. Replace the PCV valve with the one listed in **PARTS INFORMATION**.
6. Perform Idle Air Volume Learn (see page 10).
7. Erase the DTC.

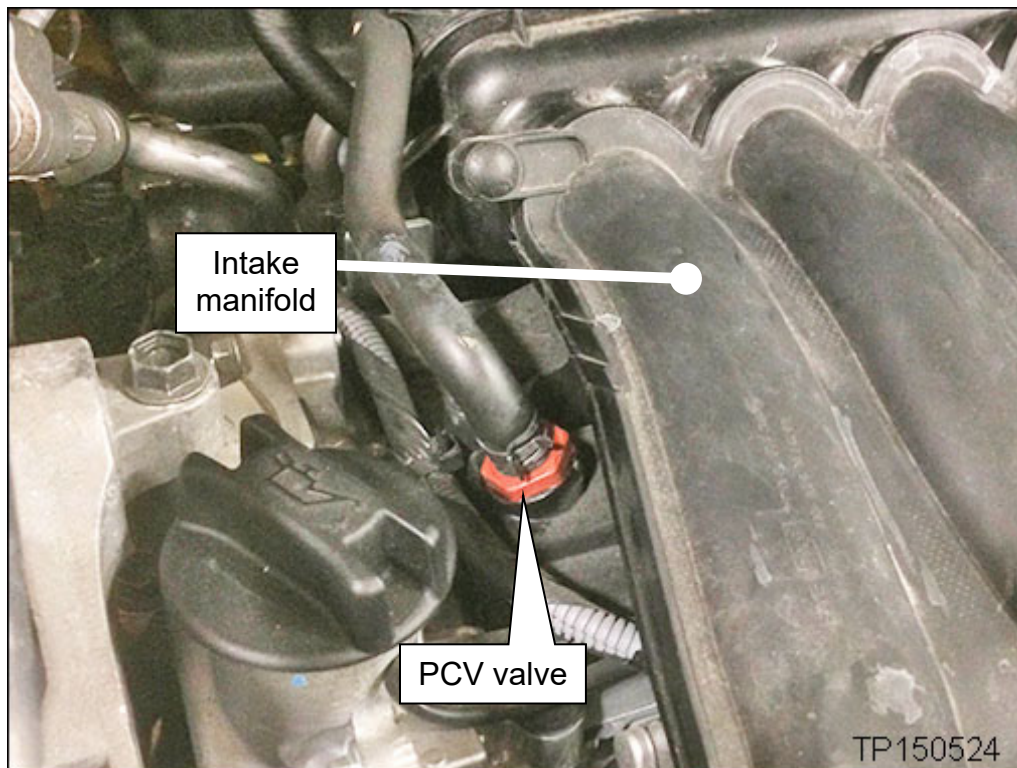


Figure A

Check ECM Part Number / ECM Reprogramming (2014-2015 Taxi ONLY)

IMPORTANT: Before starting, make sure:

- ASIST on the CONSULT PC has been synchronized (updated) to the current date.
- All CONSULT-III plus (C-III plus) software updates (if any) have been installed.
- The CONSULT PC is connected to the Internet (Wi-Fi or cable).

NOTE:

- Most instructions for reprogramming with CONSULT-III plus (C-III plus) are displayed on the CONSULT PC screen.
- If you are not familiar with the reprogramming procedure, *click here*. This will link you to the "CONSULT- III plus (C-III plus) ECM Reprogramming" general procedure.
- Take the vehicle for a 10 minute drive in order to meet the following Idle Air Volume Learn (IAVL) conditions:
 - Engine coolant temperature: 70-100°C (158-212°F)
 - Battery voltage: More than 12.9V (At idle)
 - Transmission: Warmed up
- After reprogramming is complete, you will be required to perform IAVL. The above conditions are required for IAVL to complete.



Figure B

CAUTION:

- Connect the GR8 to the 12V battery and select ECM Power Supply Mode. If the vehicle battery voltage drops below 12.0V or above 15.5V during reprogramming, the ECM may be damaged.
- Be sure to turn OFF all vehicle electrical loads. If a vehicle electrical load remains ON, the ECM may be damaged.
- Be sure to connect the AC Adapter. If the CONSULT PC battery voltage drops during reprogramming, the process will be interrupted and the ECM may be damaged.
- Turn off all external Bluetooth® devices (e.g., cell phones, printers, etc.) within range of the CONSULT PC and the plus VI. If Bluetooth® signal waves are within range of the CONSULT PC and plus VI during reprogramming, reprogramming may be interrupted and the ECM may be damaged.

1. Connect the CONSULT PC to the vehicle to begin the reprogramming procedure.
2. Start C-III plus.
3. Wait for the plus VI to be recognized.
 - The serial number will display when the plus VI is recognized.
4. Select **Re/programming, Configuration**.

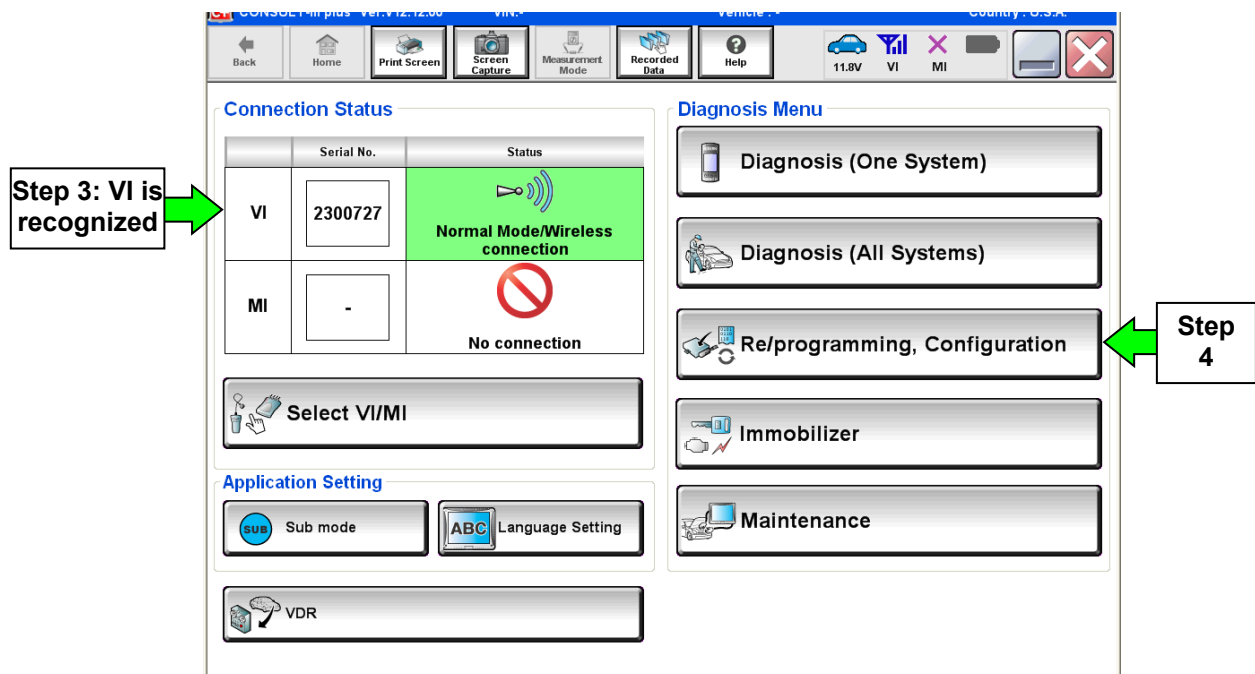


Figure 1

5. Follow the on-screen instructions and navigate the C-III plus to the screen shown in Figure 2 on the next page.

6. When you get to the screen shown in Figure 2, find the ECM **Part Number** and write it on the repair order.

NOTE: This is the current ECM Part Number (P/N).

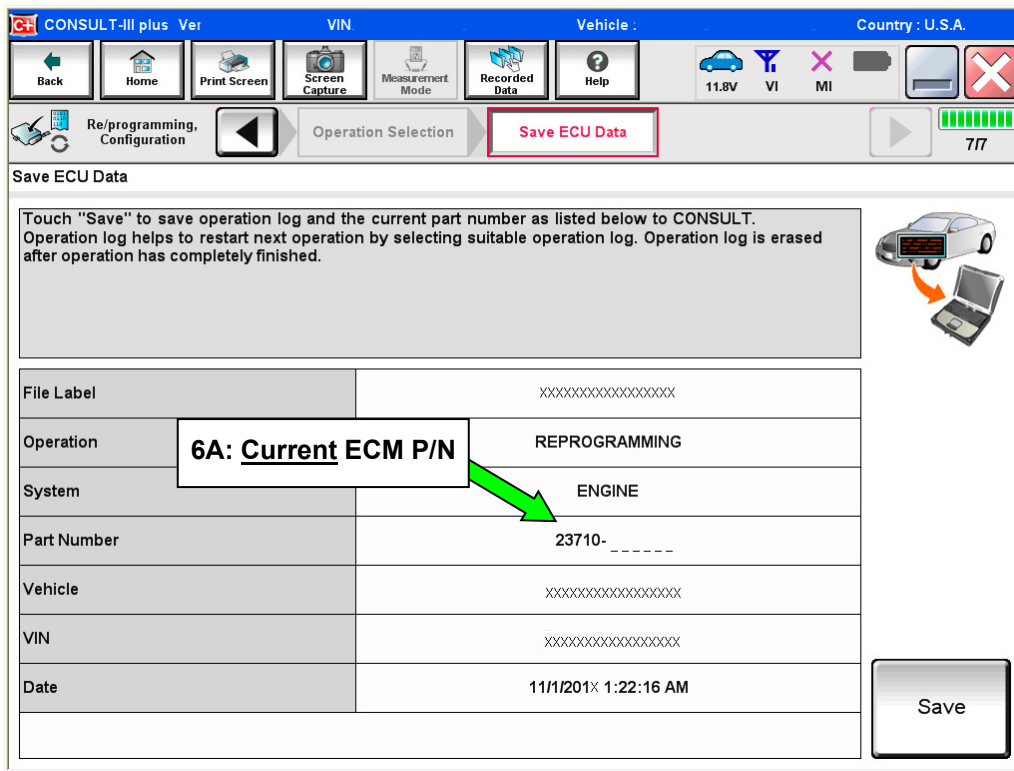


Figure 2

7. Compare the P/N you wrote down to the P/Ns in the **CURRENT ECM PART NUMBER** column in **Table A**.

- If there is a match, continue with the reprogramming procedure.
- If there is not a match, reprogramming is not needed.
 - Perform IAVL and erase the DTC. Repairs are now complete.

Table A

MODEL	CURRENT ECM PART NUMBER: 23710-
2014 Taxi	3LM5A, 3LM5B
2015 Taxi	9SC0A

8. Follow the on-screen instructions to navigate C-III plus and reprogram the ECM.

NOTE:

- In some cases, more than one new P/N for reprogramming is available.
 - In this case, the screen in Figure 3 displays.
 - Select and use the reprogramming option that **does not** have the message “Caution! Use ONLY with NTBXX-XXX”.
- If you get this screen and it is blank (no reprogramming listed), it means there is no reprogramming available for this vehicle. Close C-III plus and refer back to ASIST for further diagnosis.

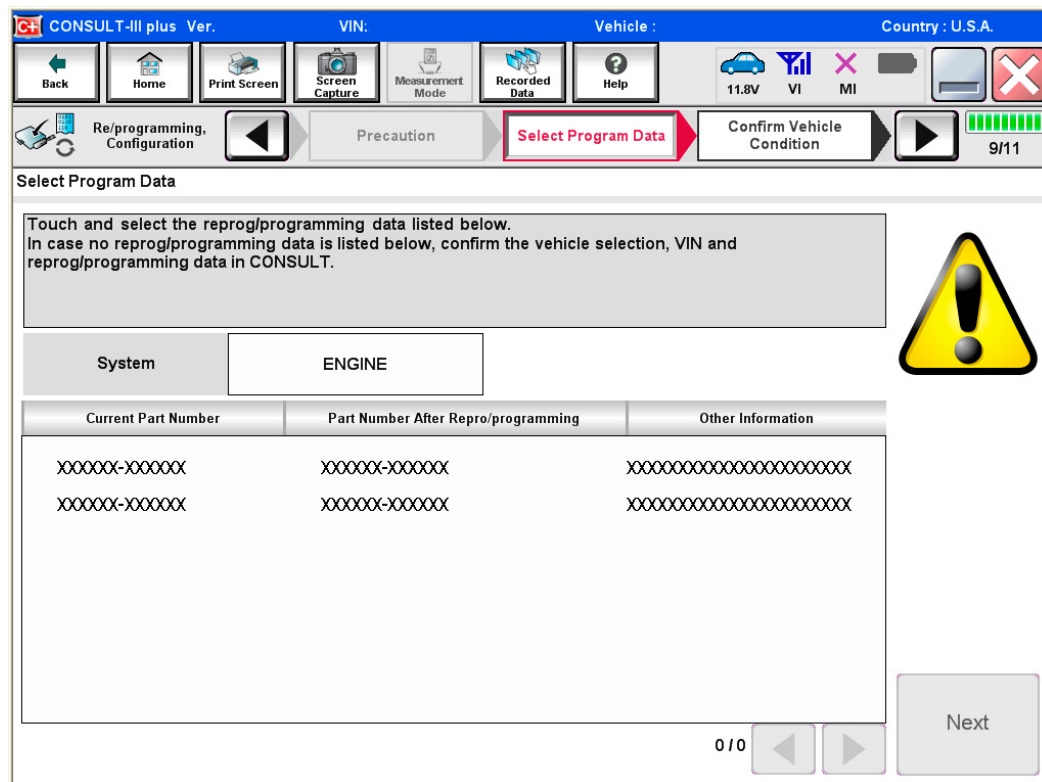


Figure 3

9. When the screen in Figure 4 displays, reprogramming is complete.

NOTE: If the screen in Figure 4 does not display (indicating that reprogramming did not complete), refer to the information on page 9.

10. Disconnect the battery charger from the vehicle.

11. Select **Next**.

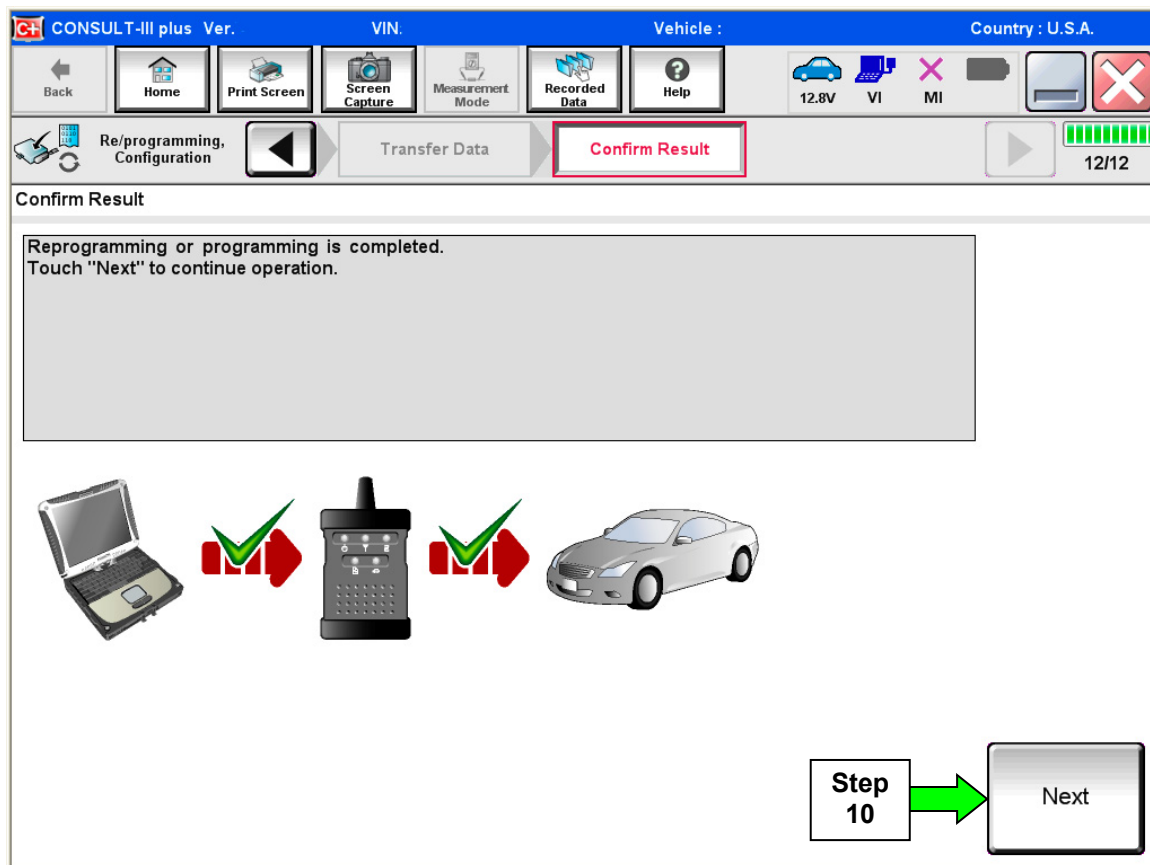


Figure 4

NOTE:

- In the next steps, starting on page 10, you will perform Throttle Valve Closed Position, Idle Air Volume Learn, Accelerator Closed Position, and DTC erase.
- These operations are required before C-III plus will provide the final reprogramming confirmation report.

ECM recovery:

Do not disconnect plus VI or shut down Consult III plus if reprogramming does not complete.

If reprogramming does not complete and the “!” icon displays as shown in Figure 5:

- Check battery voltage (12.0–15.5 V).
- Ignition is ON, engine OFF.
- External Bluetooth® devices are OFF.
- All electrical loads are OFF.
- **Select retry and follow the on screen instructions.**
- “Retry” may not go through on first attempt and can be selected more than once.

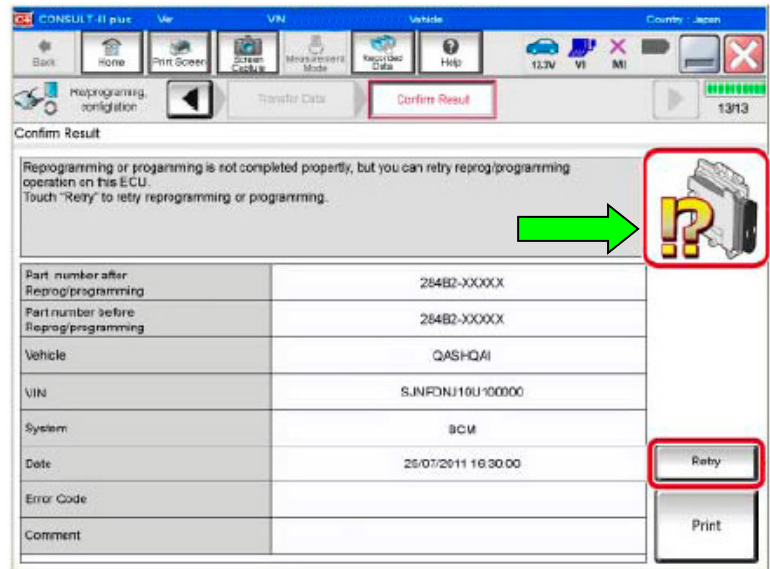


Figure 5

If reprogramming does not complete and the “X” icon displays as shown in Figure 6:

- Check battery voltage (12.0 – 15.5 V).
- CONSULT A/C adapter is plugged in.
- Ignition is ON, engine OFF.
- Transmission is in Park.
- All C-III plus / VI cables are securely connected.
- All C-III plus updates are installed.
- **Select Home, and restart the reprogram procedure from the beginning.**

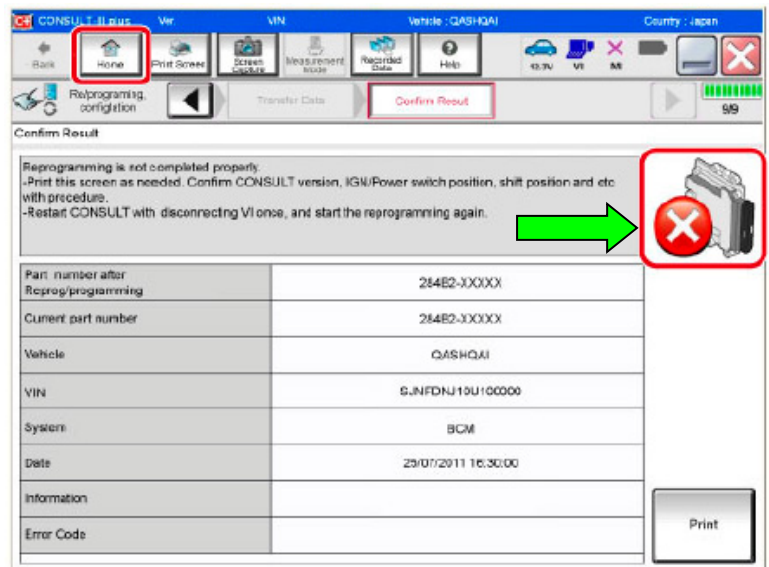


Figure 6

12. Follow the on-screen instructions to perform the following:

- **Throttle Valve Closed Position**
- **Idle Air Volume Learn (IAVL)**

NOTE:

- **Listed below are common conditions required for IAVL to complete.**
 - **If IAVL does not complete within a few minutes, a condition may be out of range.**
 - **Refer to the appropriate ESM for specific conditions required for the vehicle you are working on.**
 - Engine coolant temperature: 70-100° C (158-212°F)
 - Battery voltage: More than 12.9V (At idle)
 - Selector lever: P or N
 - Electric load switch: OFF (Air conditioner, headlamp, rear window defogger)
 - Steering wheel: Neutral (Straight-ahead position)
 - Vehicle speed: Stopped
 - Transmission: Warmed up
- **Accelerator Pedal Close Position Learning**
 - **Erase DTCs**

Continue to the next page.

- 13. When the entire reprogramming process is complete, the screen in Figure 7 will display.
- 14. Verify the before and after part numbers are different.
- 15. Print a copy of this screen (Figure 7) and attach it to the repair order for warranty documentation.
- 16. Select **Confirm**.

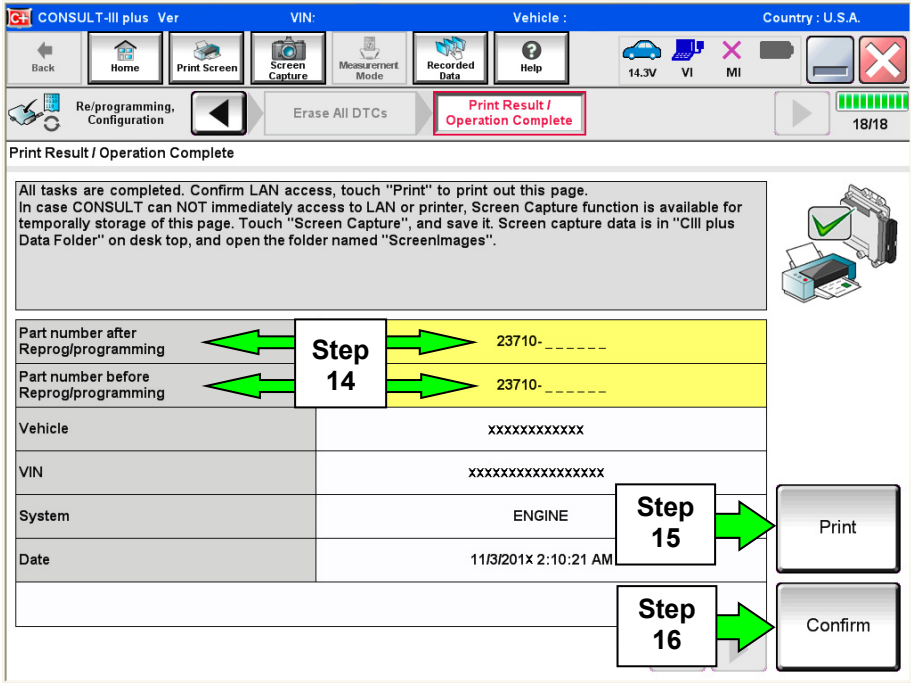


Figure 7

- 17. Close C-III plus.
- 18. Turn the ignition OFF.
- 19. Disconnect the plus VI from the vehicle.

PARTS INFORMATION

DESCRIPTION	PART NUMBER	QUANTITY
PCV Valve (Black color)	11810-6N202	1

CLAIMS INFORMATION

Submit a Primary Part (PP) type claim using the following claims coding:

DESCRIPTION	PFP	OP CODE	SYM	DIA	FRT
Replace PCV Valve	11810-6N202	AR32AA	HD	32	(1)

(1) Reference the current Nissan Warranty Flat Rate Manual and use the indicated FRT.

And on the same repair line if the ECM is reprogrammed:

DESCRIPTION	OP CODE	SYM	DIA	FRT
Reprogram ECM	DE97AA	ZE	32	(1) (2)

(1) Reference the current Nissan Warranty Flat Rate Manual and use the indicated FRT.

(2) FRT allows adequate time to access DTC codes and reprogram ECM. No other diagnostic procedures subsequently required. Do NOT claim any Diagnostic Op Codes with this claim.

AMENDMENT HISTORY

PUBLISHED DATE	REFERENCE	DESCRIPTION
December 1, 2015	NTB15-108	Original bulletin published.
January 17, 2019	NTB15-108a	APPLIED VEHICLES, ACTION, and the SERVICE PROCEDURE have been revised. A FLOW CHART has been added.