

DTNA Solutions > Service Solutions > Freightliner
> SS 1033638 - Power Window Express Down Module Disc...

SS 1033638 - Power Window Express Down Module Discontinued

SS 1033638 - Power Window Express Down Module Discontinued

Applicable Vehicles:

Cascadia, Columbia, Century Class, Argosy, and 24U

Issue:

"Express Down" feature which was used with electric windows to lowered the drivers window when the down switch is depressed one time has been discontinued, and the Express Down Module located in the drivers door is no longer available.

This affects part numbers:

DTL 16915418

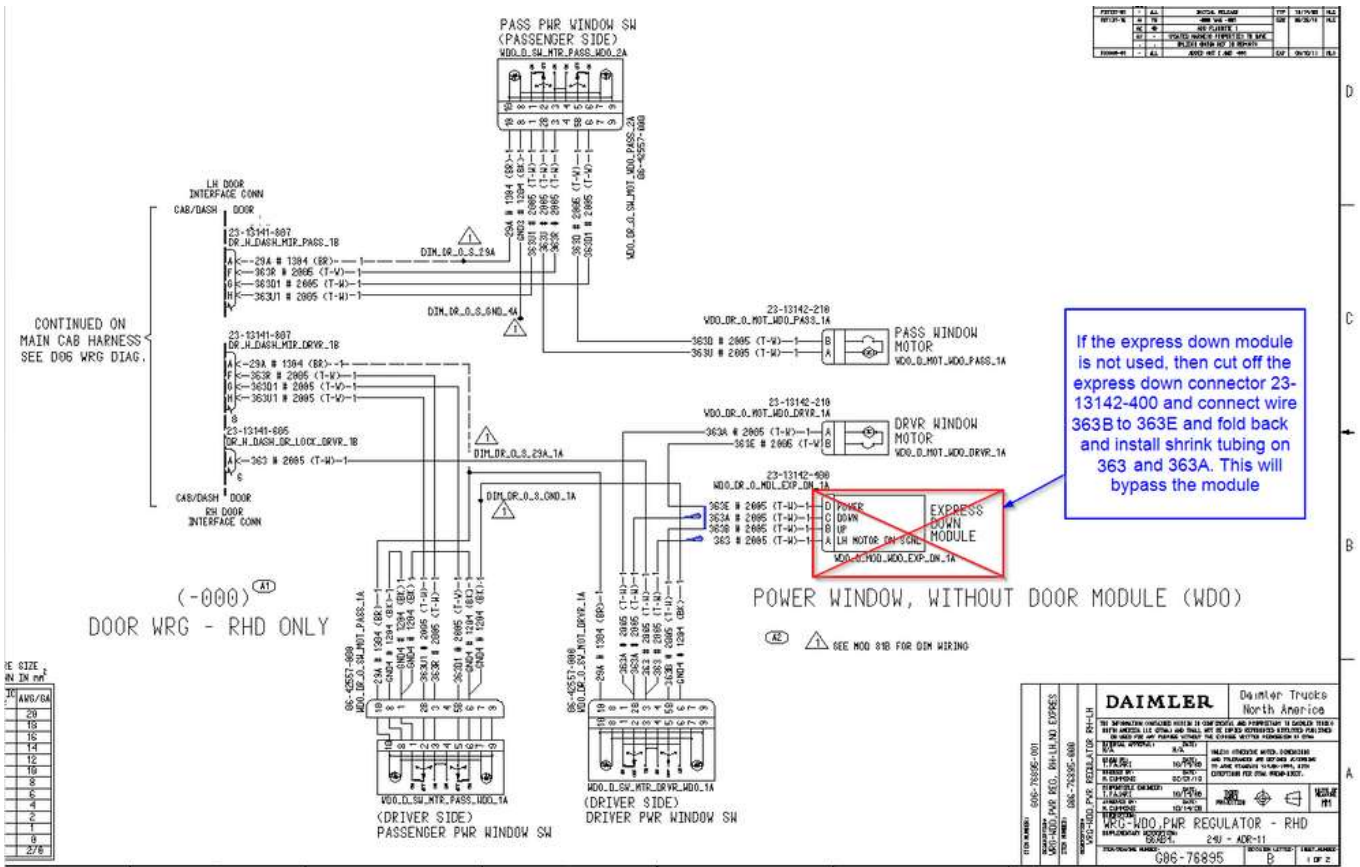
DTL 16915418

KOS 5079040

KOS 05079040

Solution:

Since it is no longer available, if the Express Down Module has failed, the solution is to remove the module and modify the wiring for the electric window as noted in the diagram below. Making this modification *will allow the window "up / down" to function normally, only without the express down feature.*



Labels :

- Cab | Body Windshield | WiperWash | and Doors
- Cascadia
- Century Class
- Columbia
- Freightliner
- Power | Electrical | Harnesses | and Wiring

electric window
express window

Add tags

68 Kudos

